

Felton Branch Library

Community Meeting

May 9, 2017



SANTA CRUZ
PUBLIC LIBRARIES



Meeting Agenda

- ❖ PowerPoint Presentation
- ❖ Review Next Steps
- ❖ Questions and Comments
- ❖ How to Stay Involved



Background

- **Felton Library Needs**
 - Belardi Memorial Building
 - Serving thousands of area residents
- **Santa Cruz Public Libraries**
 - Strategic Plan
- **Measure S**
 - \$10 million for new Felton Branch Library
- **New Felton Branch Library**
 - Verutti family donates library site, County acquires remainder
 - 9600 sq ft branch & Outdoor Discovery Park



Timeline of Events

Year	Event
2002	Verutti family offered property adjacent to Post Office on Gushee Street in Felton
2005-07	Community meetings held to provide input on the new library building
2009	New library building designed by Architect Teall Messer
2014	Santa Cruz Libraries Facilities Financing Authority established for financing public library improvements in the Santa Cruz City/County Library System
2015	The Verutti family donates portion of 2.03 acre parcel and County purchases remainder
2016	County accepted easement from the San Lorenzo Valley Water District to access the property
2016	Voters Approve Measure S - \$67 million bond measure for libraries

Volunteer Efforts



**Felton Library Friends, AmeriCorps sponsored by Valley Women's Club,
California Conservation Corps, FLF Restoration Team**

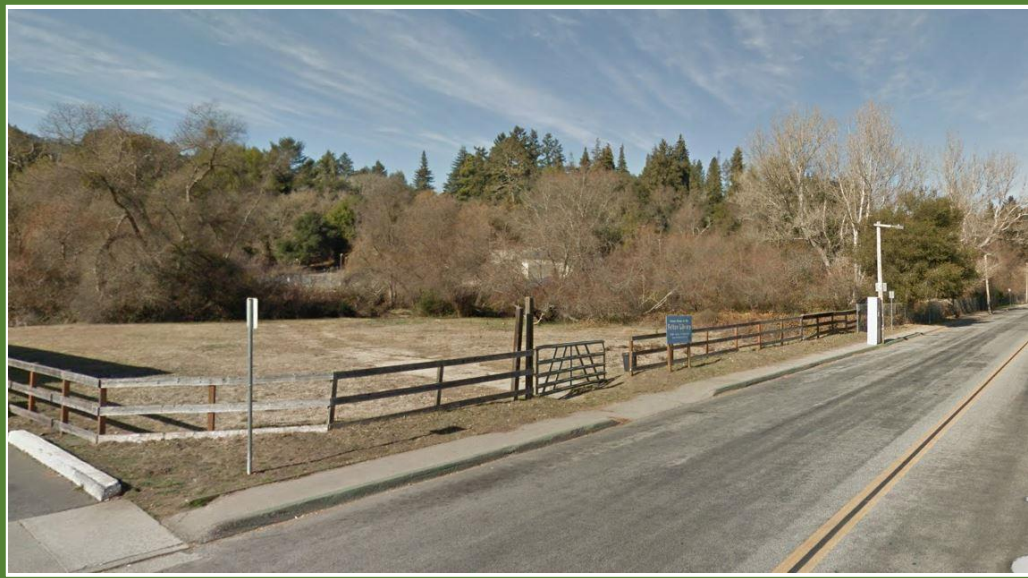
Site Context



Site Images



Bull Creek

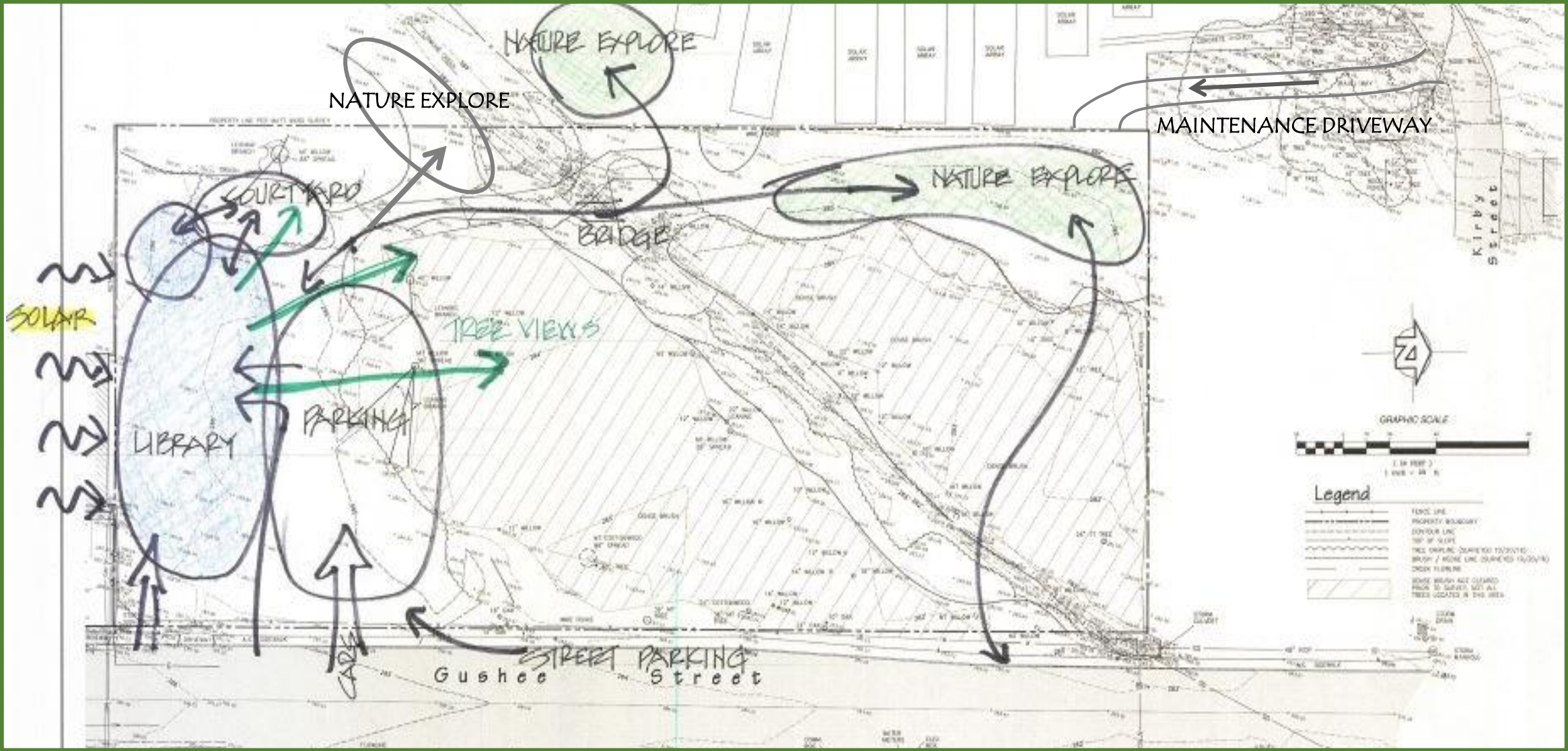


From Gushee Street



Gushee Street Frontage

Library Site



New Felton Branch Library

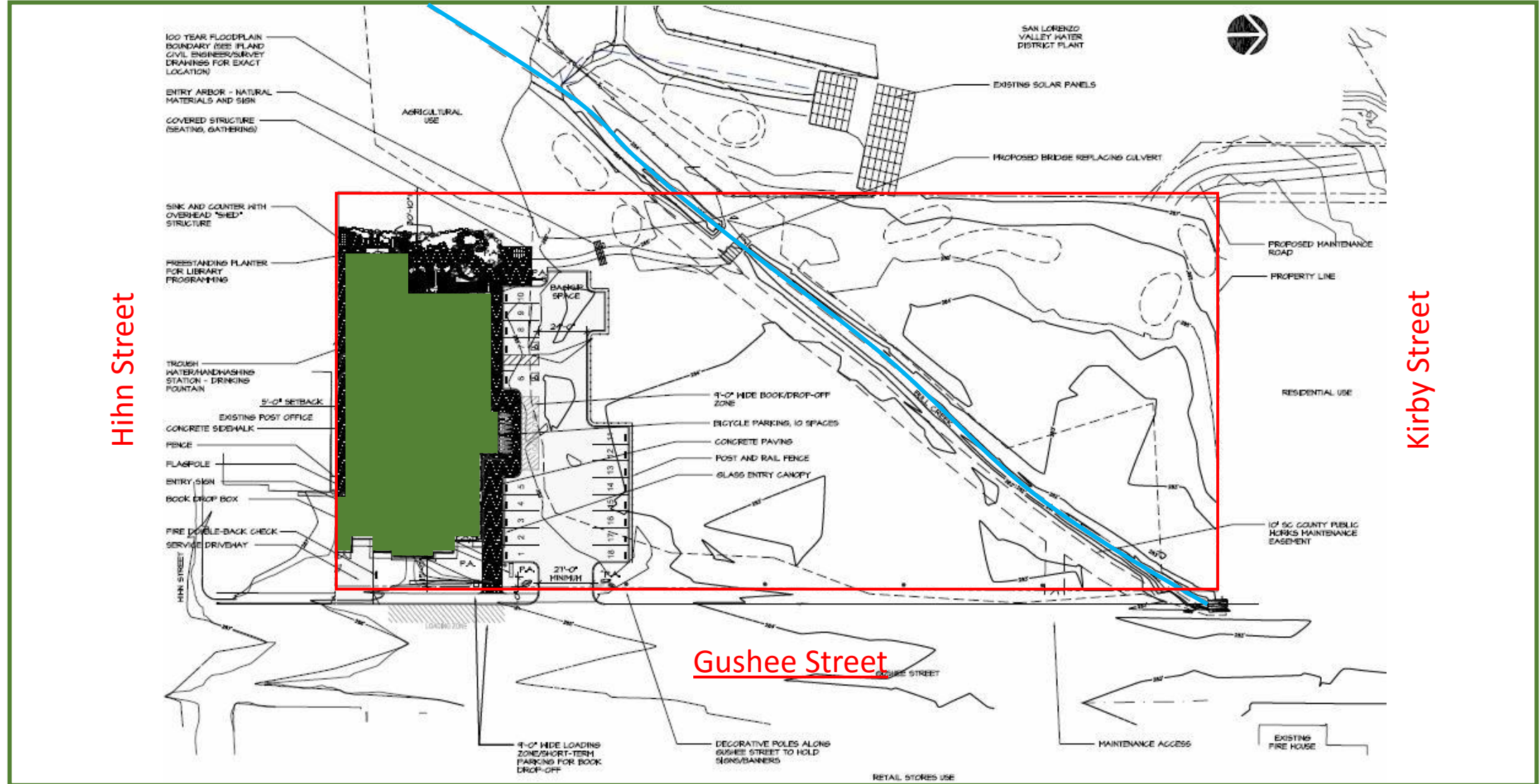
- 9650 square foot building
- Parking
- New and expanded programs
- Larger collection
- Technology
- Group Study Space
- Children's Area
- Teen Area
- Adult Reading
- Courtyard



Felton Library

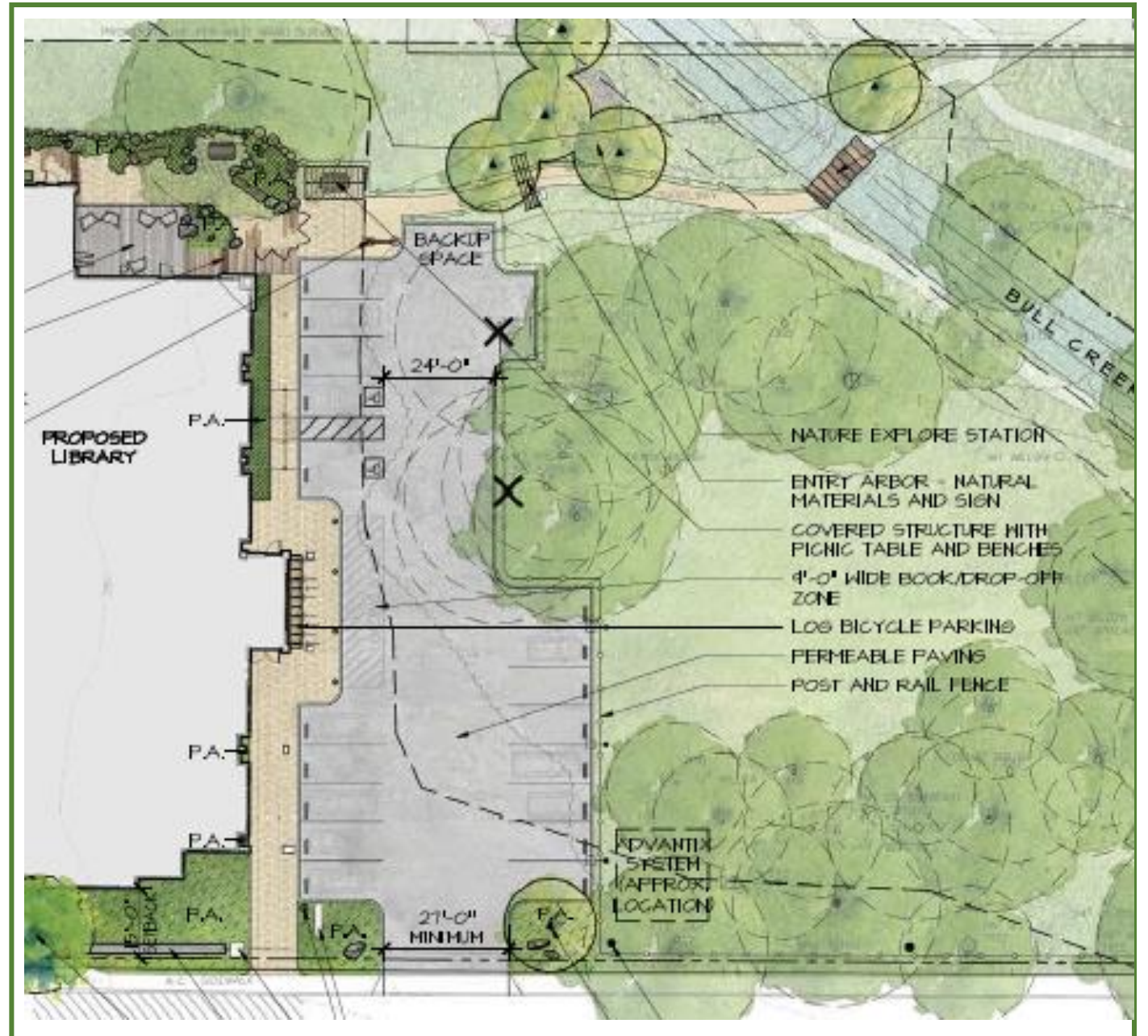


Felton Library



Site Elements

- Library Courtyard
- Riparian Mitigation & Environmental Enhancement
- Outdoor Discovery Park – Nature Explore
- Bull Creek



Library Site



Site Elements



SITE MATERIALS IMAGERY

FELTON LIBRARY

MAY 9, 2017



TEALL MESSER
ARCHITECT



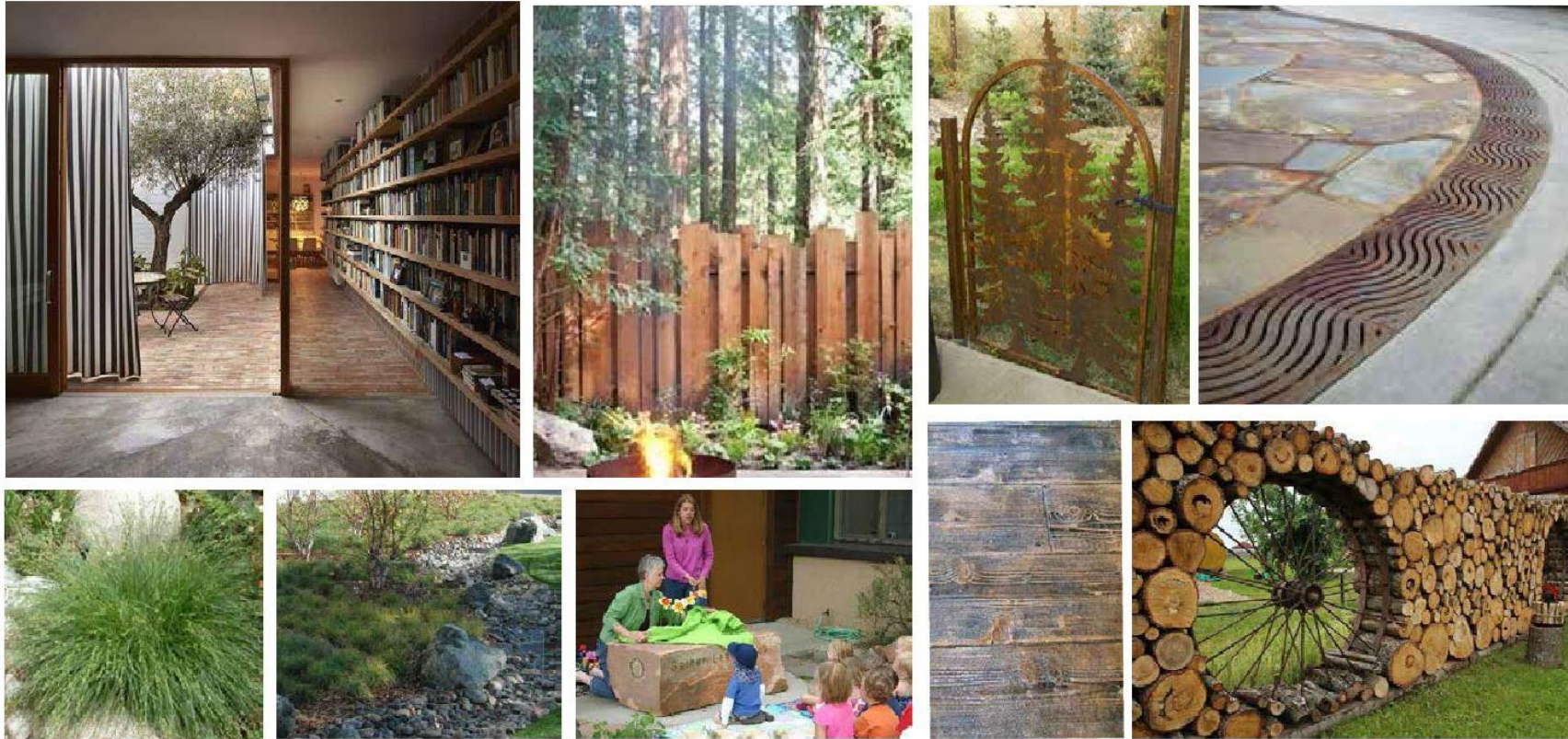
SANTA CRUZ
PUBLIC LIBRARIES

JONI L. JANECKI
& ASSOCIATES

Library Courtyard



Library Courtyard



COURTYARD LANDSCAPE IMAGES

FELTON LIBRARY

MAY 9, 2017



**TEALL MESSER
ARCHITECT**

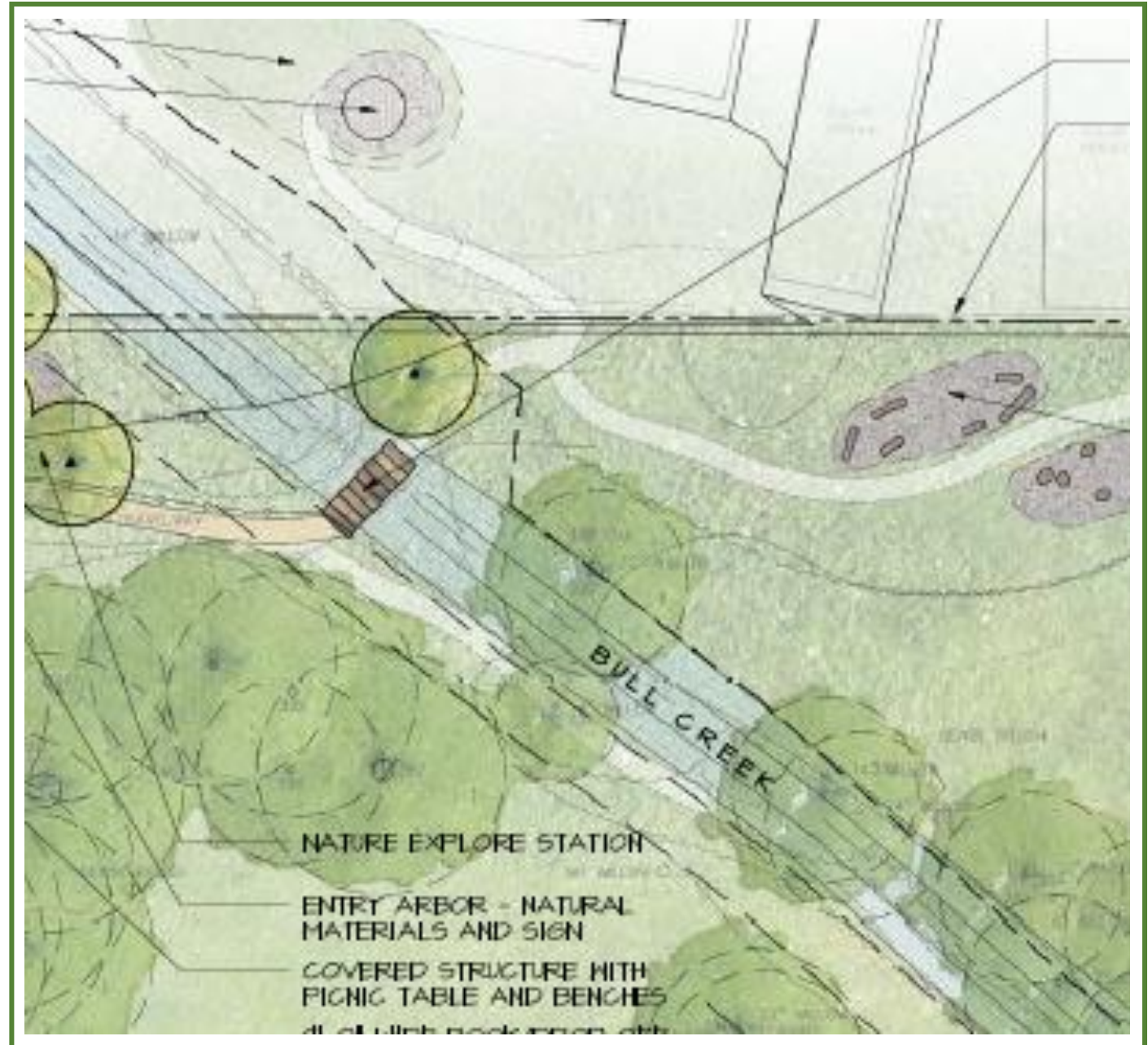


**SANTA CRUZ
PUBLIC LIBRARIES**

**JONI L. JANECKI
& ASSOCIATES**

Outdoor Discovery Park

- Environmental Literacy
- For All Ages
- Informal Themed Stations for Self and Small Group Exploration
- Felton Library Friends, County Parks & San Lorenzo Valley Water District



Outdoor Discovery Park



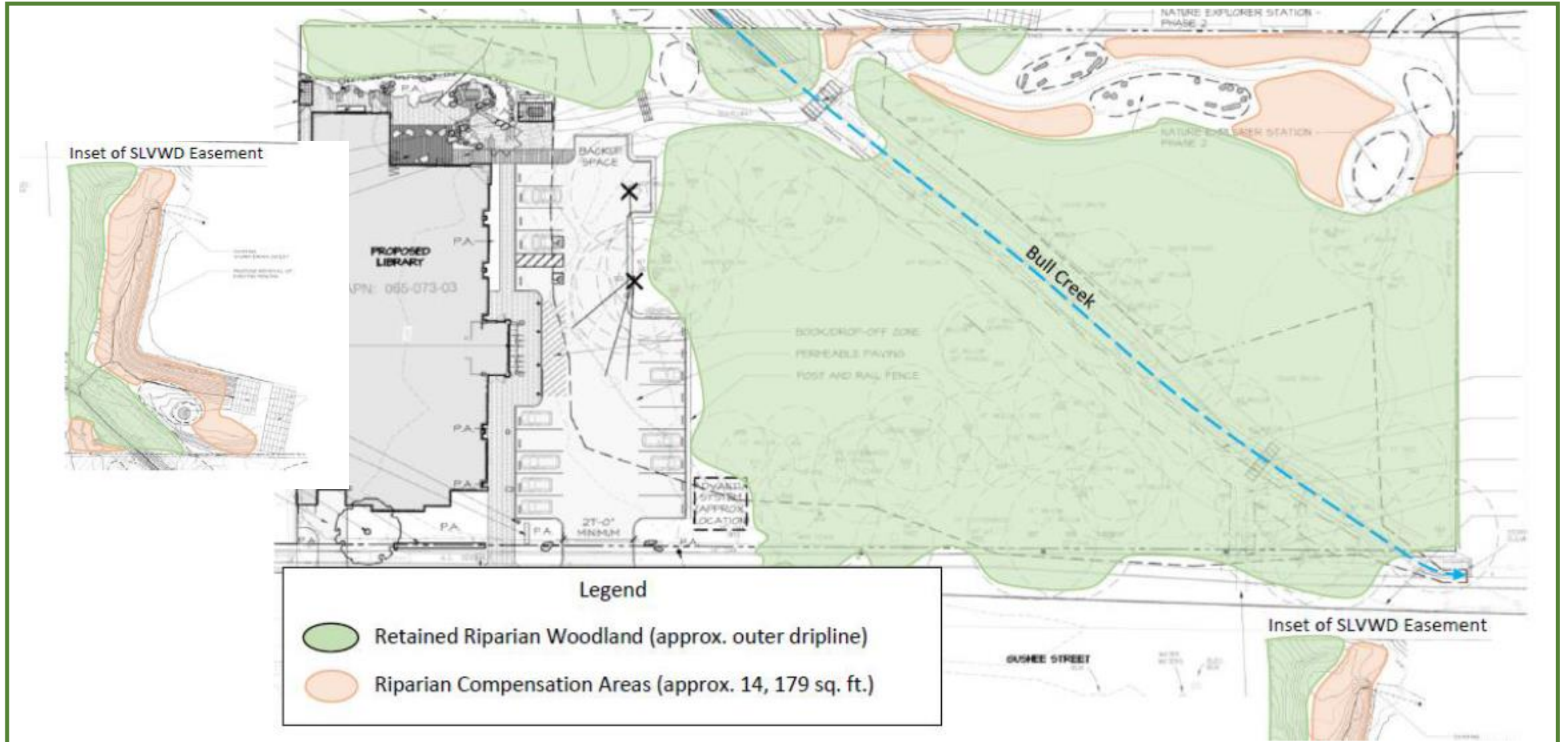
NATURE EXPLORE PHASE II
FELTON LIBRARY
MAY 9, 2017



SANTA CRUZ
PUBLIC LIBRARIES

JONI L. JANECKI
& ASSOCIATES

Riparian Mitigation



Project Status & Partnerships

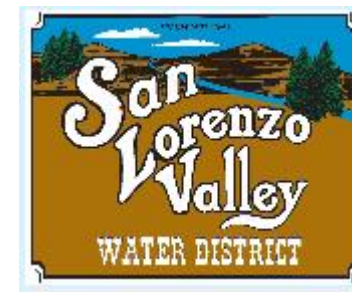
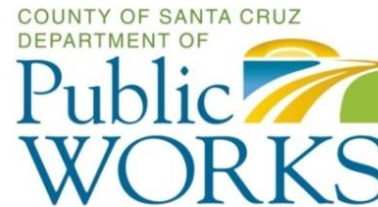
- Preliminary Design & Studies
- Development Permit Application
- Partnerships
 - ✓ Santa Cruz Public Libraries
 - ✓ Santa Cruz County
 - ✓ Felton Library Friends
 - ✓ San Lorenzo Valley Water District



SANTA CRUZ
PUBLIC LIBRARIES



Felton Library Friends
Libraries Build Community



Next Steps

- **Library Interior Design**
- **Late Summer Community Meeting**
- **Fall Planning Commission Hearing**
- **Other Permits and Approvals**
- **Outdoor Discovery Park Funding**
- **2018 Construction**

Timeframe	Task
Summer 2017	Library Interior Design
Late Summer 2017	Community Meeting to Review Interior Design
Fall 2017	Planning Commission Hearing
Fall 2017 - Winter 2018	Fish & Wildlife, Regional Water Quality Control Board, US Army Corps of Engineers Permits
Spring 2018	Advertise to Bid Construction Pending Permits
Spring 2018 - Summer 2019	Construction, Move-In, Library Opening



Questions and Comments



Stay Involved

- Festival May 20th
- FeltonLibraryFriends.org

Felton Library Friends

fantastic figures FESTIVAL

Art Builds Community!

Art Activities
Fantastic Figure Auction
 Pizza, Strawberries, Lemonade

Saturday, May 20th
Noon - 4 pm
on the Library Land
 next to the Felton Post Office

Music by Patti Maxine, Ben Lonesome, Dave McClellan, and Little People's Repertory Theatre

On-Line Auction of Fantastic Figures
 May 20 - June 16

Details at FeltonLibraryFriends.org

Felton Library Friends - chapter of Friends of the Santa Cruz Public Libraries