

Felton Branch Library

Presentation to the Santa Cruz County Board of Supervisors

May 24, 2016

Current Library

- Housed in the 1,250 square foot Belardi Memorial Building, a church built in 1893
- Lacks numerous amenities:
 - ✓ Parking
 - ✓ Disabled access
 - ✓ Homework areas
 - ✓ Meeting and other rooms
 - ✓ Shelving for collections
 - ✓ Technology



About the Area Served

- Combined population of approximately 16,000 residents:
 - ✓ Felton
 - ✓ Ben Lomond
 - ✓ Lompico
 - ✓ Mount Hermon
 - ✓ Zayante
 - ✓ Parts of Bonny Doon
- Walking distance to Downtown Felton
- Less than one mile from the San Lorenzo Valley Unified School District K-12 campus
- Also within close proximity to:
 - ✓ K-8 private school
 - ✓ Preschools
 - ✓ Day cares
 - ✓ Large home school population
- Growing senior population



Timeline of Events

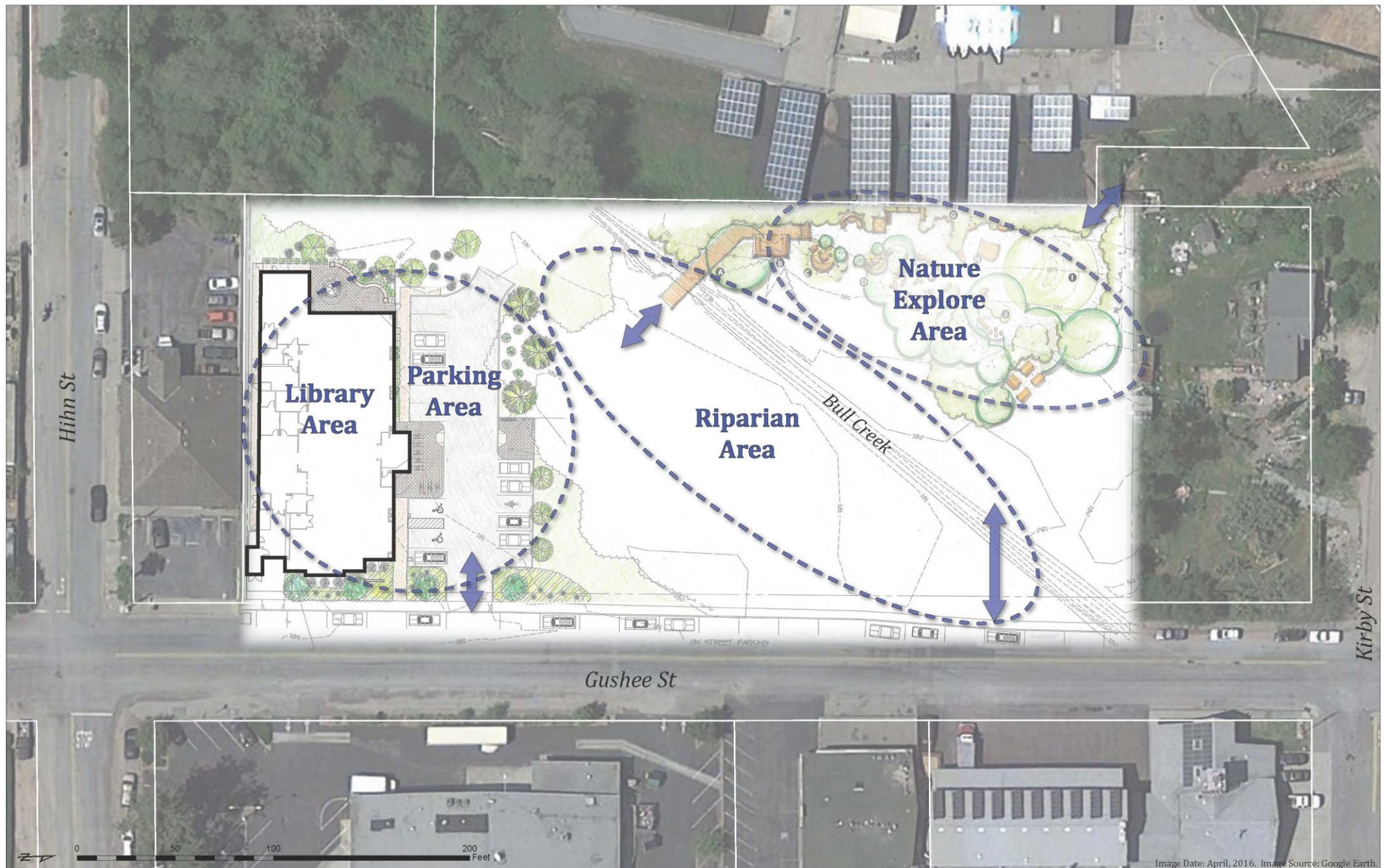
Year	Event
2002	Verutti family offered property adjacent to Post Office on Gushee Street in Felton
2005 2007	Community meetings held to provide input on the new library building
2009	New library building designed by Architect Teall Messer
2014	Santa Cruz Libraries Facilities Financing Authority established for financing public library improvements in the Santa Cruz City/County Library System
2015	County acquired 2.03 acre parcel from the Verutti family
2016	County accepted easement from the San Lorenzo Valley Water District to access the property
2016	Santa Cruz Libraries Facilities Financing Authority placed a \$67 million bond measure (Measure S) on the June ballot



Felton Library Site

Image Date: April, 2016. Image Source: Google Earth.

May 24, 2016



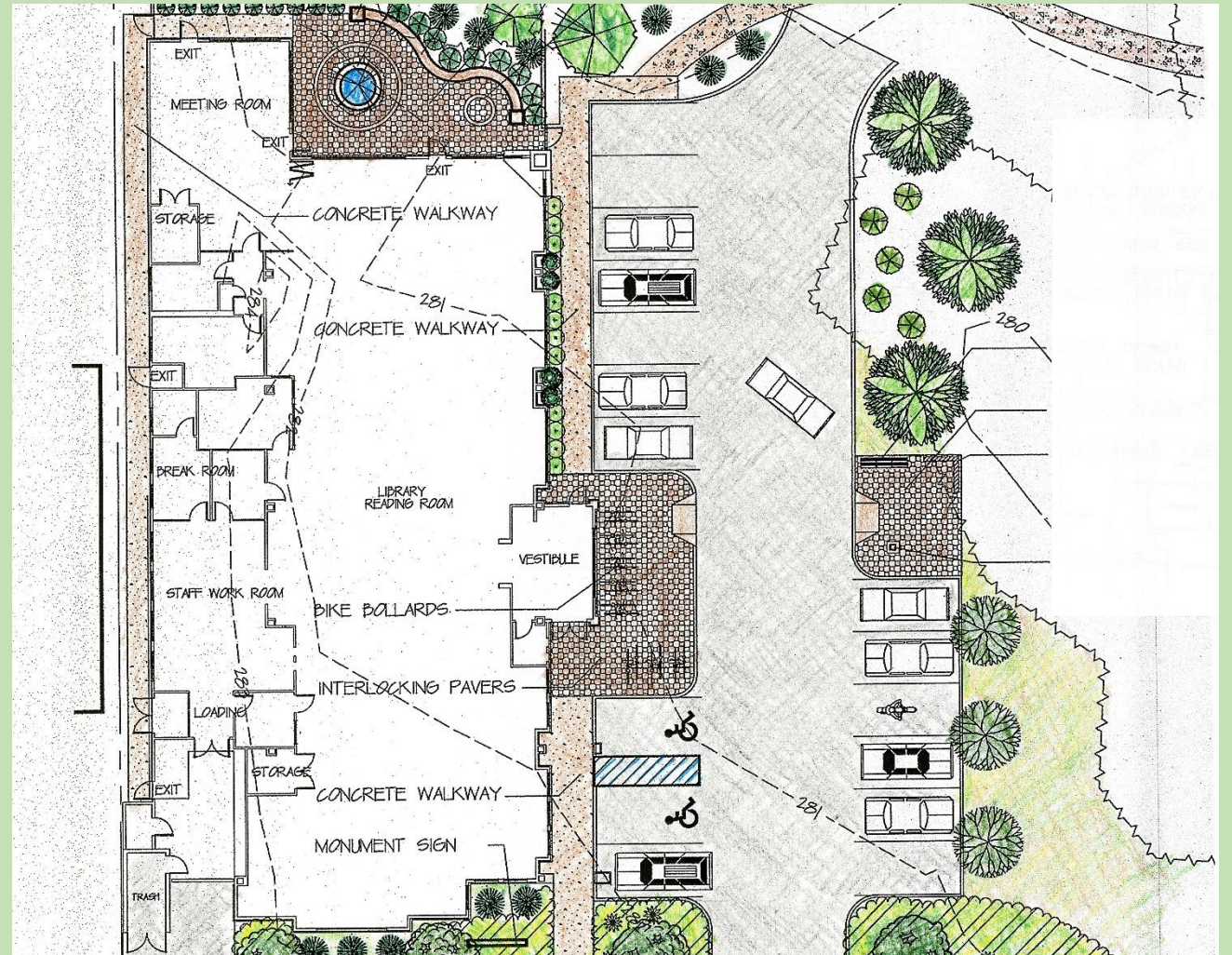
Felton Library Site Concept

Image Date: April, 2016. Image Source: Google Earth.

May 24, 2016

New 21st Century Library

- 9,300 square feet
- Children's area
- Teen room
- Reading room
- Meeting/flexible room
- Staff work room
- Library van parking
- Energy efficient construction
- Modern electrical systems





Creekside Zone: Discovering the Natural World

- Creek and land restoration
- Native plant demonstration gardens
- Riparian walkway along Bull Creek
- Theme gardens and seed lending
- “Nature Explore” area for children



Native Plant Gardens



Riparian Walkway

Theme Gardens





Seed Lending



"Nature Explore" Anythink Library Thornton, Colorado



- A ENTRY**
- BRIDGE/BOARDWALK
 - CONTEXTUAL ARBOR (picture 1)
 - CONNECTING ACCESSIBLE PATH TO PARKING AREA
- B GATHERING**
- COVERED/ROOFED SEATING & SUN NOOK
 - BENCHES WITH BACK RAIL
 - STORAGE/DISPLAY
 - PICNIC/PROJECT AREA?
- C NATURE ART**
- LOCAL/REGIONAL FLAGSTONE FLOOR (picture 3)
 - TABLE (picture 2) WITH SEATING
 - STORAGE WITH NATURAL LOOSE PARTS
 - WILLOW SHADE 'EYEBROW' OR VERNACULAR/INDIGENOUS SHADE STRUCTURE
- D BUILDING**
- LOCAL/CONTEXTUAL PAVED FLOOR
 - TABLE (picture 5) WITH SEATING
 - STORAGE WITH NATURAL LOOSE PARTS
 - SHADE STRUCTURE COMPLEMENTING ONE FOR NATURE ART AREA

E GARDEN/DIRT DIGGING

- RAISED BEDS (picture 4)
- TRELLIS PANEL ON FENCE
- WATER SOURCE?
- STORAGE

F MESSY MATERIALS

- 10"-20" DIAMETER X 4'-8' LONG LOGS AT PERIMETER
- 12"-18" DEPTH EWF
- 'LOG OF INTEREST' (picture 6)
- MIXED/VARIED LOOSE PARTS

G WATER

- RECIRCULATING
- NO STANDING WATER
- CONTEXTUAL

H MUSIC & MOVEMENT

- ACCESSIBLE STAGE (picture 7)
- MUSICAL INSTRUMENT (picture 8)
- STORAGE

I OPEN

- SHAPED GRASSY KNOLL (picture 11)
- FOOT TRAFFIC TOLERANT
- GROUND COVER

J CLIMB/BALANCE

- BALANCE BEAM (picture 9)
- LOG STEPS (STUMP STEP) (picture 10)
- 9" DEPTH EWF & 6' CLEAR 'USE ZONE'

K PATHS THROUGH PLANTINGS

- RIPARIAN RESTORATION
- MIXED PLANT ATTRIBUTES
- EWF/PERMEABLE PATH

LEGEND

B : BENCH
M : MUSIC INSTRUMENT
BB : BALANCE BEAM
DG : DOUBLE GATE
S : STORAGE
SS : STUMP STEP
TP : TRELLIS PANEL



Felton Library | Santa Cruz, CA Concept Plan | 4.5.16

Nature Explore is a collaborative program of Arbor Day Foundation and Dimensions Educational Research Foundation ©2016 Dimensions Foundation



SCALE: 1"=20'
0 10' 20' 40'

NOT INTENDED FOR CONSTRUCTION

Next Steps

- Continue community conversations and partnerships
- Update studies in order to submit application to Planning
- Monitor outcome of “Measure S” in June 2016
- Agreement with Verutti family requires construction to start by:
 - ✓ June 7, 2021 - five years from date of successful measure
 - OR
 - ✓ August 13, 2021 - six years from date of recorded deed

