

Library Financial Workshop

Library Advisory Commission

January 25, 2021



SANTA CRUZ
PUBLIC LIBRARIES

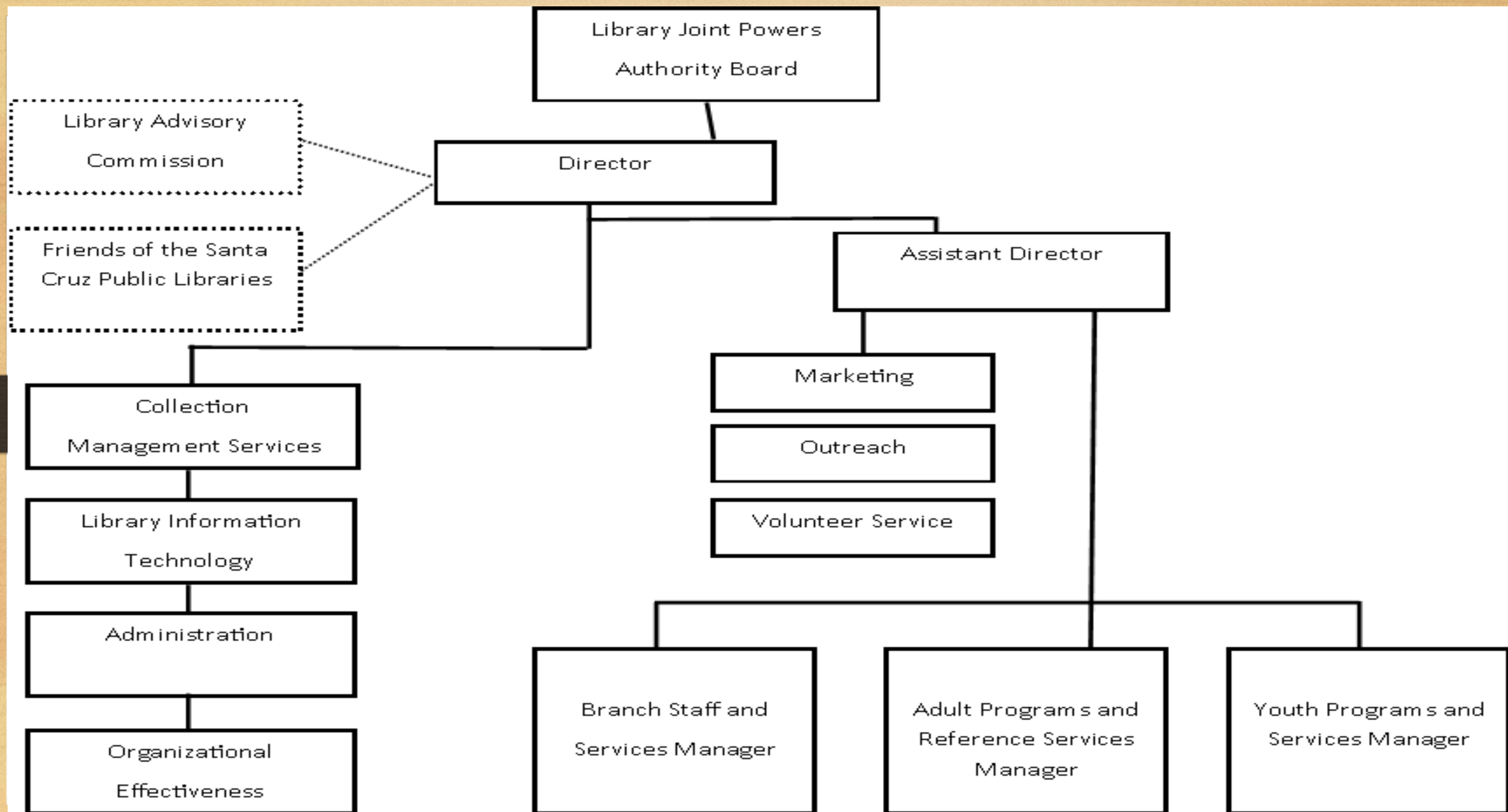
Vision/Mission

- Vision:

Transform Lives and Strengthen Communities

- Mission:

Connect, Inspire, Inform



Library Governance

01

GOVERNING
BOARD:

LJPB

02

ADVISORY
BODIES:

LAC

03

FACILITIES
IMPROVEMENT:

LFFA

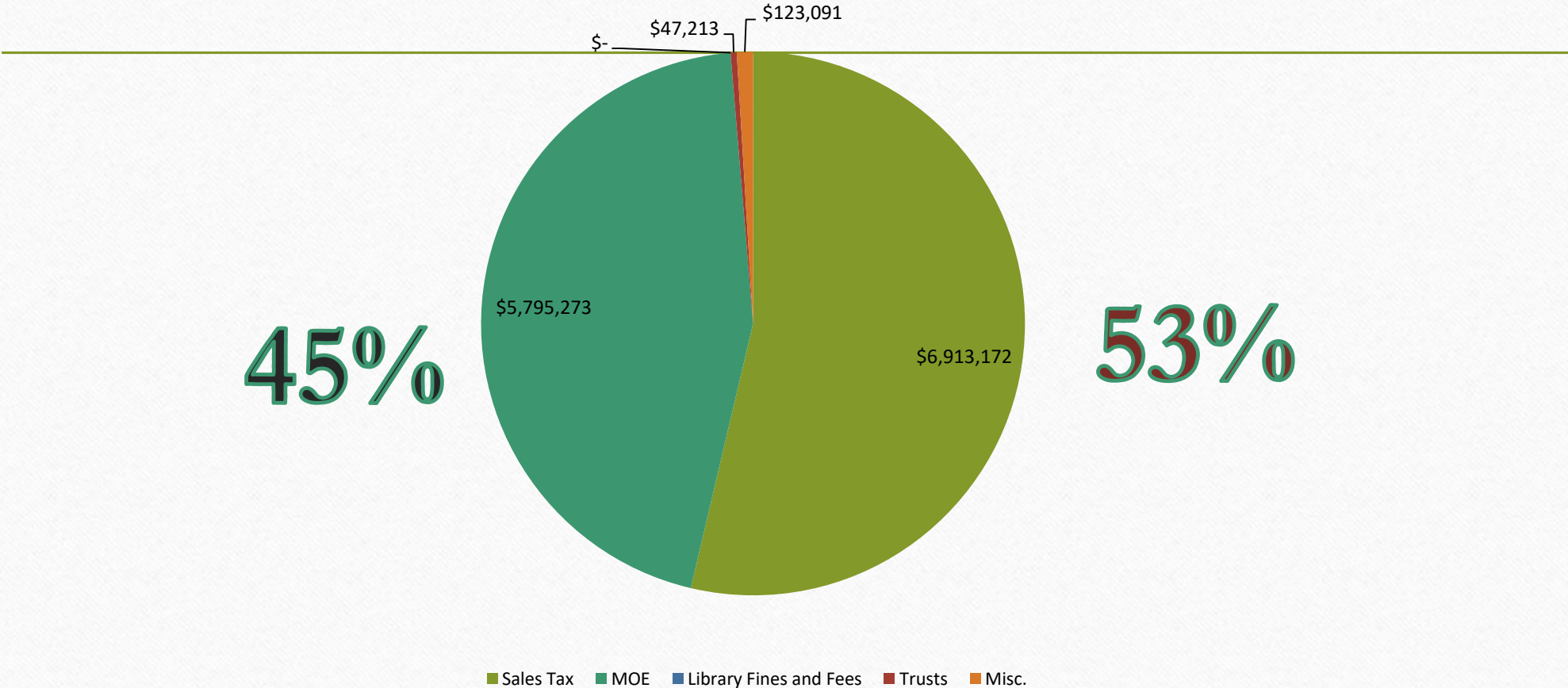
04

FINANCING:

LFA

Revenue Sources: Two Main Sources

2020-2021 Revenue



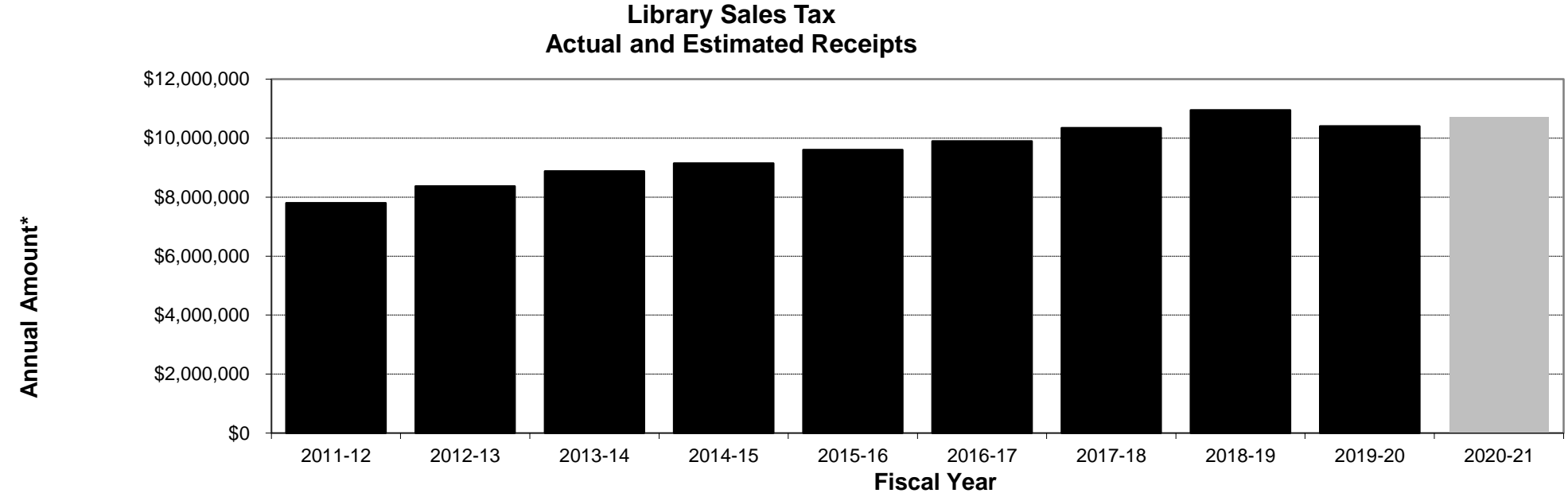
Maintenance of Effort

- Five-year agreement through June 30, 2021
- Maintenance of Effort (MOE) contributions in 2020-21:
 - County Library Fund – \$5,072,541 (includes County unincorporated area and cities of Capitola and Scotts Valley)
 - City of Santa Cruz – \$1,744,751
 - City of Watsonville – \$541,684

County Library Fund

- Special revenue fund from property taxes
- County overhead costs range \$100-200k annually
- Revenue in excess of MOE contribution used on library improvements or services at County Library Fund branches
- Excess revenue estimated at \$2 million in 2020-21

Library Sales Tax



* Total receipts before audit and insurance costs

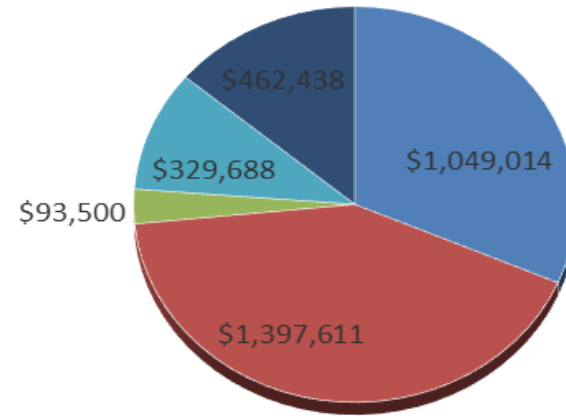
Major Expenditures

FY 20/21

- Personnel 70%
- Collections 8%
- Operation 22%



Non Personnel Expenditures by Library Function



■ Information Technology ■ Library Materials ■ Staff Development ■ Building O & M
■ Supplies and Equipment ■ System Services ■ Administrative Services

Budget Process

- Library Management Prepares Draft Budget
- Library Presents Draft Budget for LJPB (May)
- Library Proposal to LJPB for Approval (June)

Issues Facing the Library for FY 21/22

1. Construction Closures
2. Hours of Operation
3. MOE Agreement
4. Overhead Services Agreement with the City
5. Facilities Maintenance/Facilities Lease



Questions and/or Discussion

