



JAYSON
ARCHITECTURE



Community Workshop

SANTA CRUZ DOWNTOWN LIBRARY MIXED USE PROJECT



ABE JAYSON

Architect

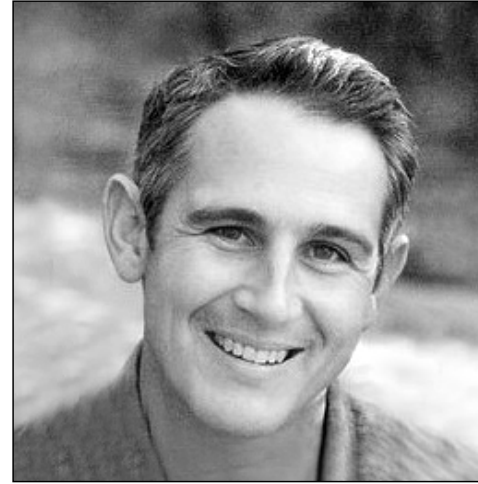
Principal-in-Charge



KATIE STUART

Architect

Associate, Project Manager



JIM RENDLER

Principal

Vice-President



BONNIE LIPSCOMB

Economic Development

Executive Director



PROJECT TEAM MEMBERS

SANTA CRUZ DOWNTOWN LIBRARY
MIXED USE PROJECT



I. CONCEPTUAL DESIGN

II. COMMUNITY DIALOGUE

III. NEXT STEPS

CONTENTS

SANTA CRUZ DOWNTOWN LIBRARY
MIXED USE PROJECT

JAYSON
ARCHITECTURE





CONCEPTUAL DESIGN

6

NUMBER OF MEETINGS

38

NUMBER OF QUESTIONS

60

NUMBER OF PARTICIPANTS

756

NUMBER OF RESPONSES

III. What is one feature that would make you more likely to use the library?

"treehouse"
for little kids
to hang out

sensory spaces
as well as quiet
spaces for
sensory
sensitive folks

kids ONLY
area (no
parents
allowed)

acoustic
separation

bike parking,
including
space for
cargo bikes

bike lockers or
secure bike
parking (but not
in lieu of other
bike parking)

family
friendly bike
racks (animal
shapes)

rope
bridges for
the bigger
kids

collaborative,
safe spaces for
studying,
focus, and
creativity

water
table (for
water toys)

high speed
internet &
charging
stations (from
visitors to S.C.)

lockers for
the public
to store

specialized
classes -
SAT or
driver's ed

secure bike
storage
(card
access)

marble
roll, kinetic
sculpture

information
classes
(lunch &
learn)

place to
get
coffee

soda
machine,
coffee shop &
hammocks

gift shop
with
snacks

Drive
through
book drops

designated
loud &
quiet
spaces

free
printing

special entry
door directly
to children's
room

VII. What values should a civic building represent in the 21st Century? In

Santa Cruz?

inclusive

prominent
part of
downtown

tough - needs
to be able to
stand up to a
lot of use

equitable

recognizing &
acknowledging
past wrongs -
reparations

embedded
within
community

responds to
our dire
environmental
state

compelling

honoring the
culture/history
of Santa Cruz

honoring the
physical
environment,
beaches, the
ocean, the forest

accessible in
every way - so
that everyone
can use it

sustainable

attractive

honoring
a sense
a place

works well
with other
civic
functions

I. What aspect of the project are you are most excited about?

freeing up space for housing

getting rid of surface parking lots

more permanent family friendly downtown attractions

modern architecture

housing supports restaurants, library supports families + community

library designed for now, including digital + information components

community center in the downtown

supports pedestrian downtown

use at all times of day - residents bring night life

love to have another public space in addition to abbots

opportunity to replace outdated library

modern library + community center

need more community space + support retail and restaurants

anchor for downtown

beautiful and serves multiple ages groups

roof deck

tremendous resource for this community

ON THE EXISTING LIBRARY...

FOND MEMORIES, WELL LOVED, & FULL OF HISTORY

DINGY, DILAPIDATED, & OUTDATED

UNSAFE, UNWELCOMING, & STUFFY

STAKEHOLDER ENGAGEMENT

SANTA CRUZ DOWNTOWN LIBRARY
MIXED USE PROJECT

JAYSON +
ARCHITECTURE



ON THE NEW SITE...

GREAT SYNERGY WITH DOWNTOWN & PACIFIC

CONCERNS ABOUT LOSS OF FARMER'S MARKET

BETTER USE OF SITE THAN PARKING LOT

STAKEHOLDER ENGAGEMENT

SANTA CRUZ DOWNTOWN LIBRARY
MIXED USE PROJECT

JAYSON +
ARCHITECTURE



ON THE MIXED USE PROJECT...

PART OF DOWNTOWN FABRIC

AFFORDABLE HOUSING IS NEEDED

PROVIDE OUTDOOR/GREEN SPACE

STAKEHOLDER ENGAGEMENT

SANTA CRUZ DOWNTOWN LIBRARY
MIXED USE PROJECT

JAYSON +
ARCHITECTURE



ON A NEW LIBRARY...

SHOULD BE MODERN & FORWARD LOOKING

INCORPORATE SUSTAINABILITY

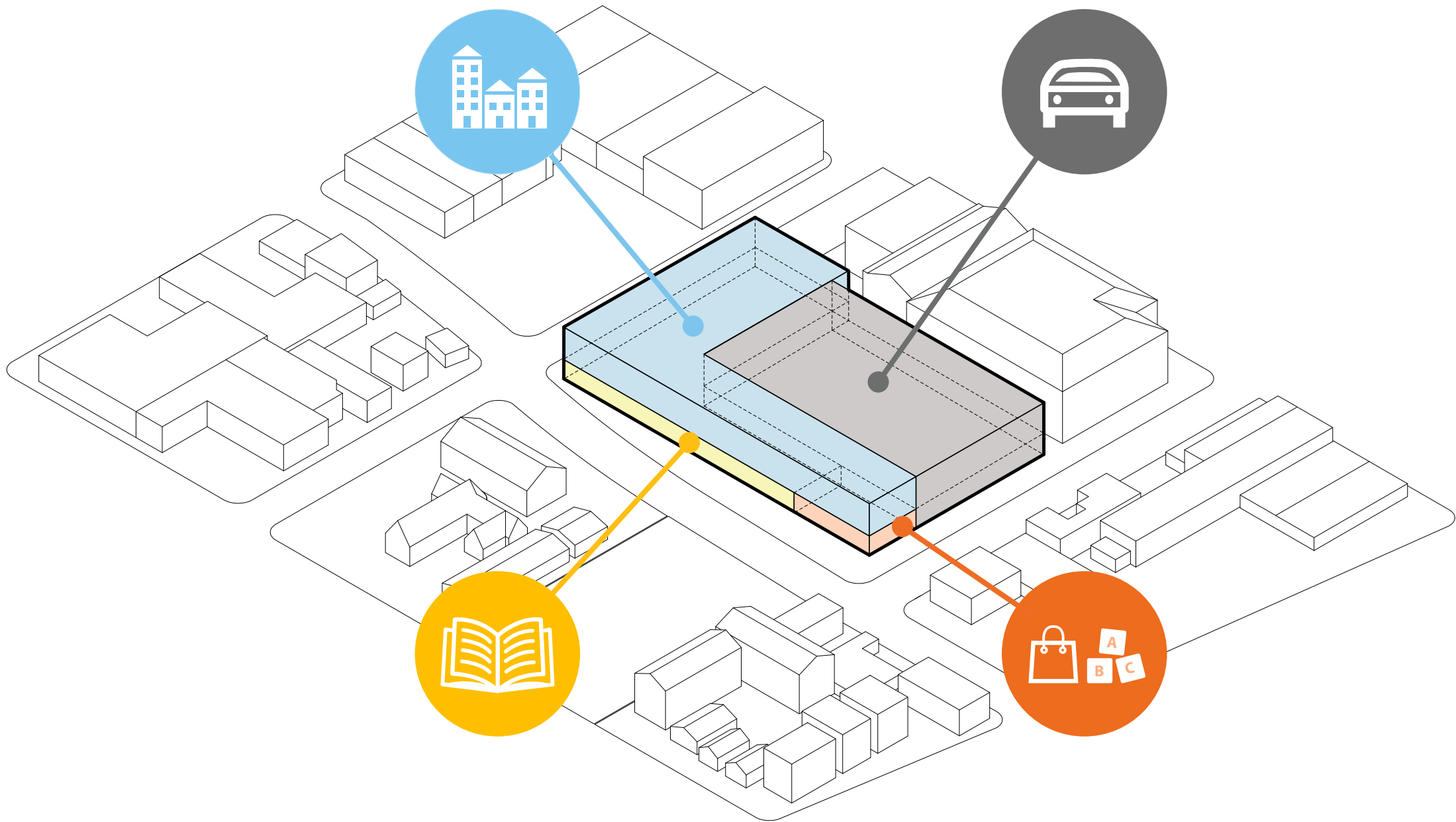
A PLACE FOR EVERYONE

STAKEHOLDER ENGAGEMENT

SANTA CRUZ DOWNTOWN LIBRARY
MIXED USE PROJECT

JAYSON +
ARCHITECTURE





SITE PROGRAM

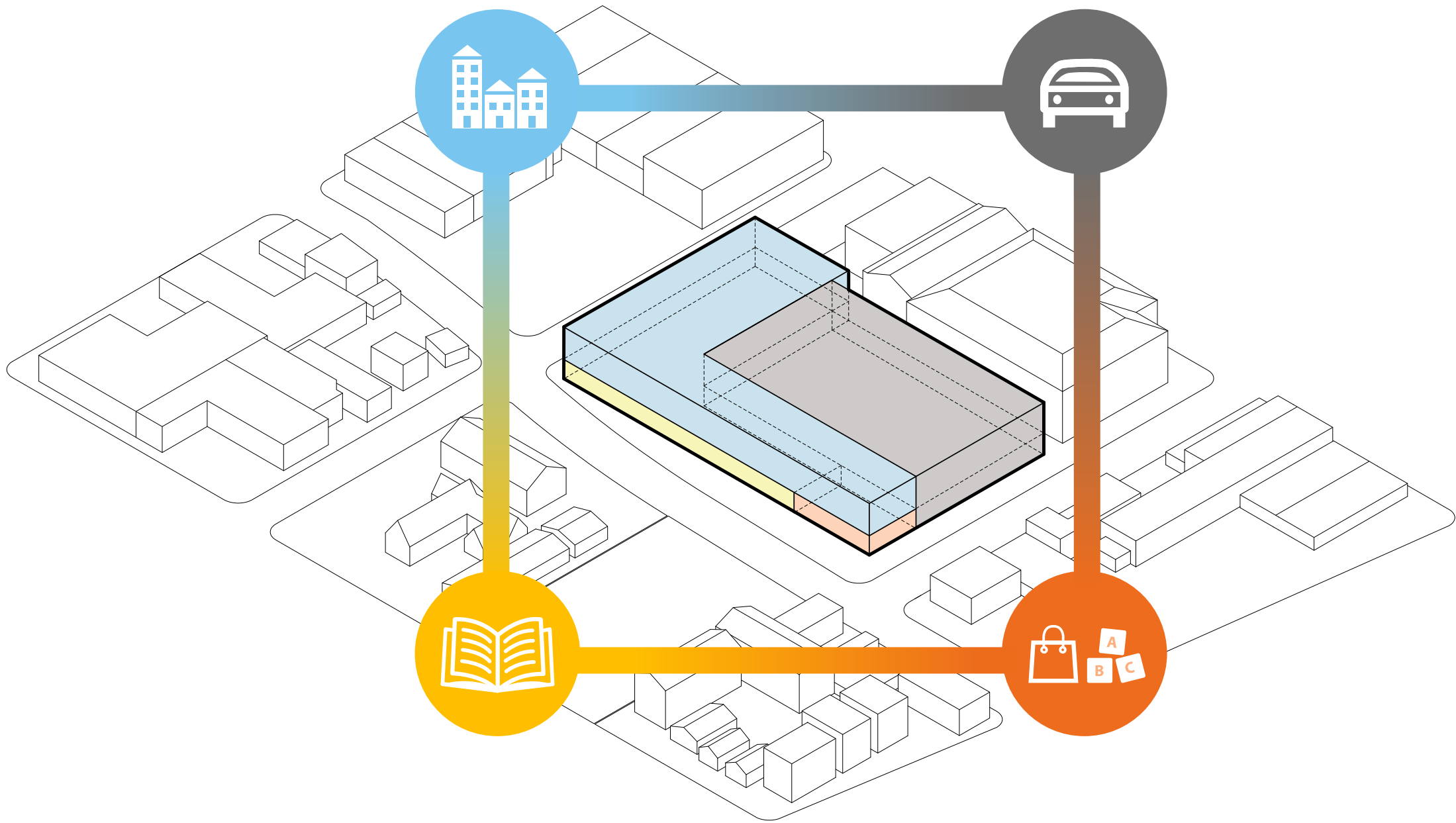
SANTA CRUZ DOWNTOWN LIBRARY
MIXED USE PROJECT

JAYSON
ARCHITECTURE

+ EDEN
HOUSING

+ forthe future
HOUSING

+ CITY OF
SANTA CRUZ



SITE PROGRAM

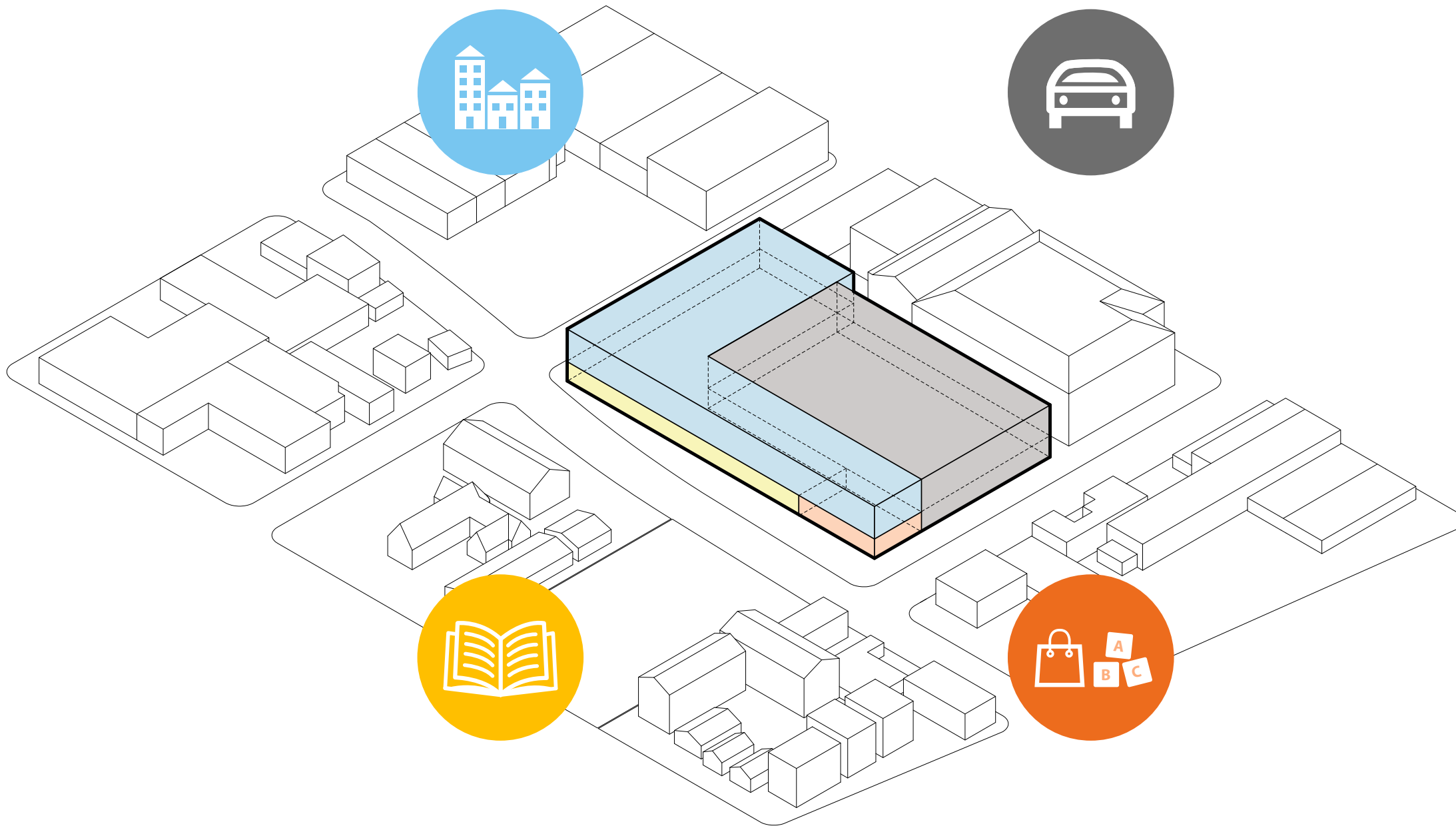
SANTA CRUZ DOWNTOWN LIBRARY
MIXED USE PROJECT

JAYSON
ARCHITECTURE

+ EDEN
HOUSING

+ for the future
HOUSING

+ CITY OF
SANTA CRUZ

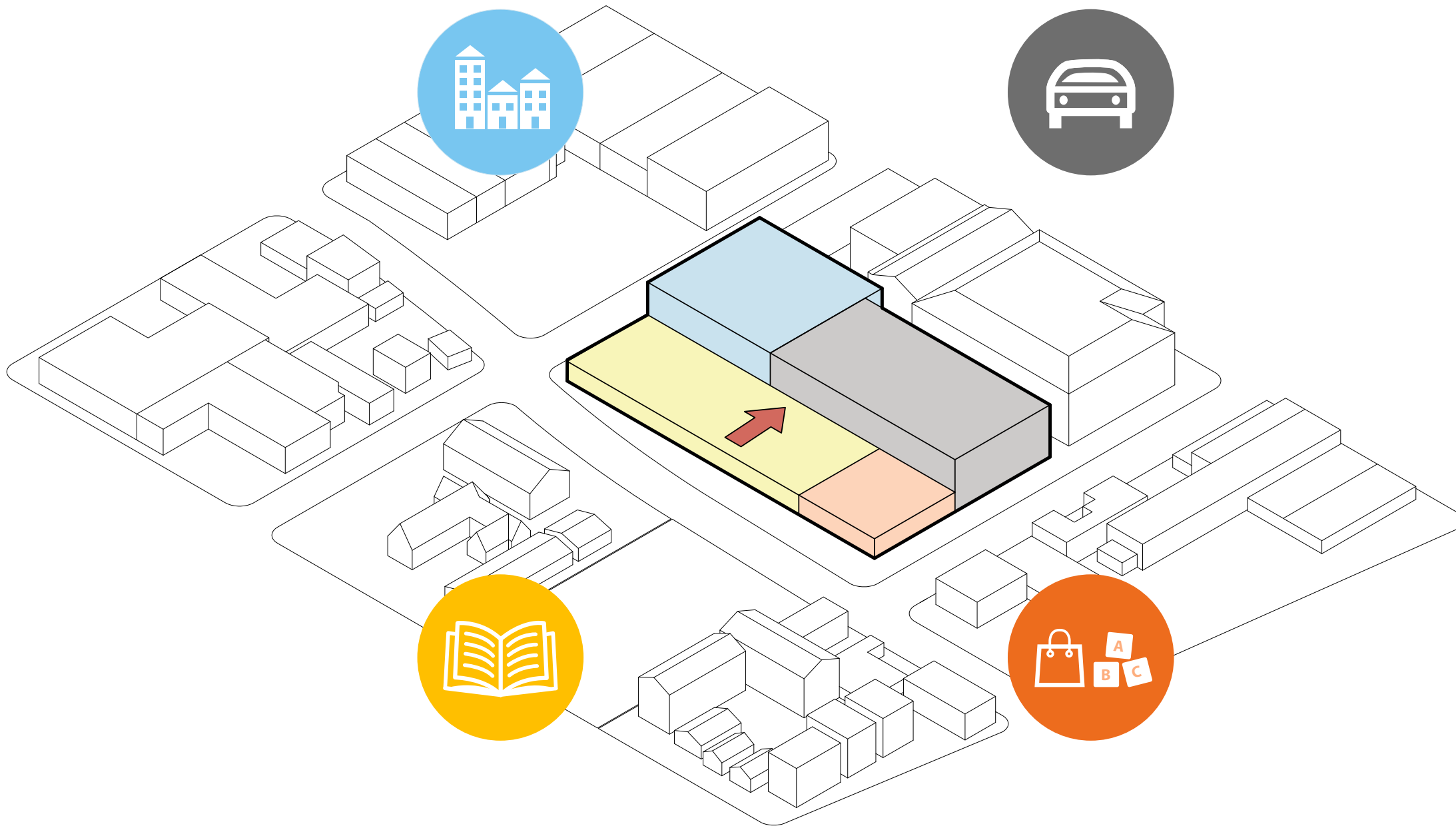


SITE PROGRAM

SANTA CRUZ DOWNTOWN LIBRARY
MIXED USE PROJECT

JAYSON
ARCHITECTURE





EMPHASIZE LIBRARY

SANTA CRUZ DOWNTOWN LIBRARY
MIXED USE PROJECT

JAYSON
ARCHITECTURE

+



EDEN
HOUSING

+

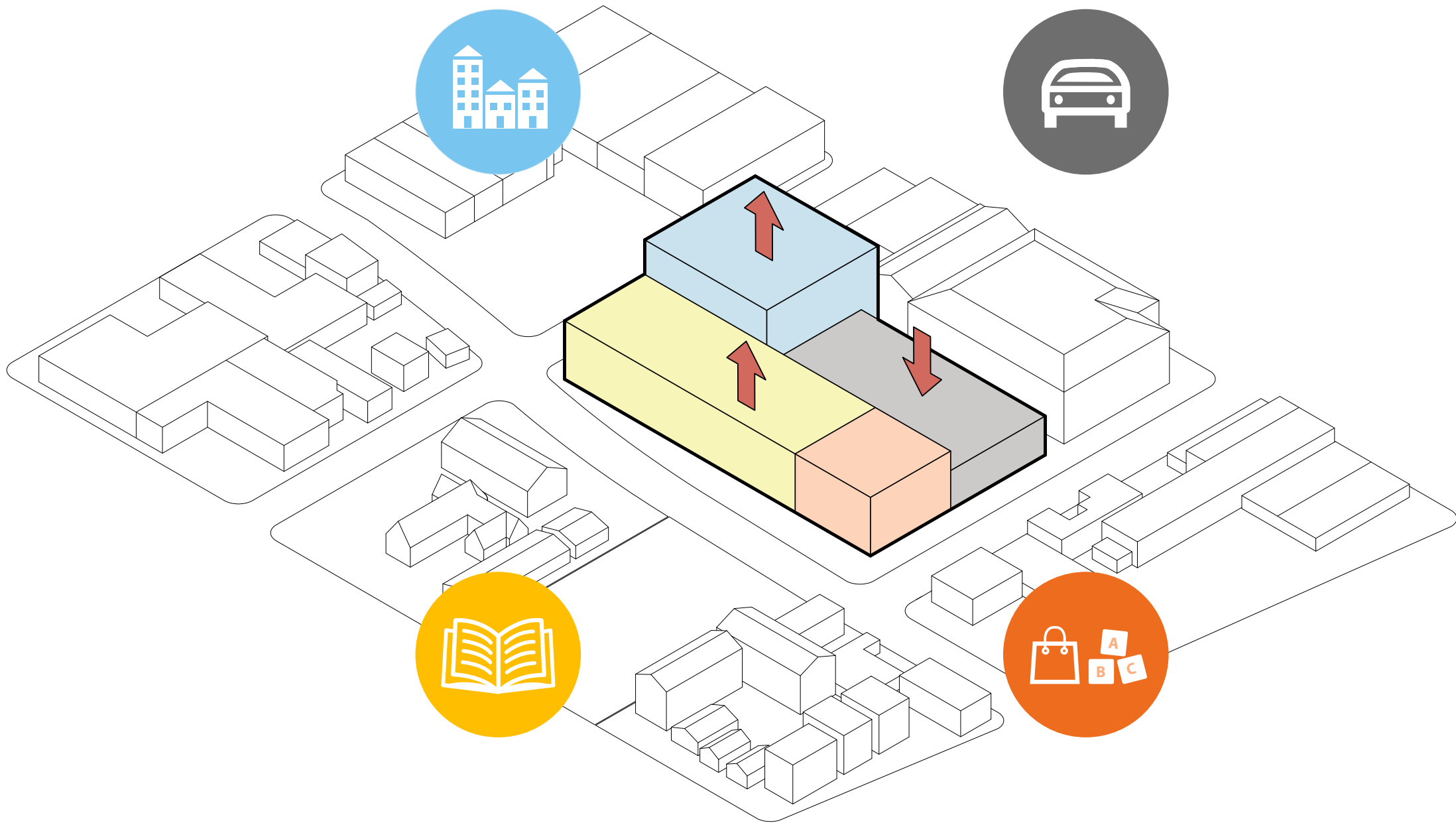


for the future
HOUSING

+



CITY OF
SANTA CRUZ

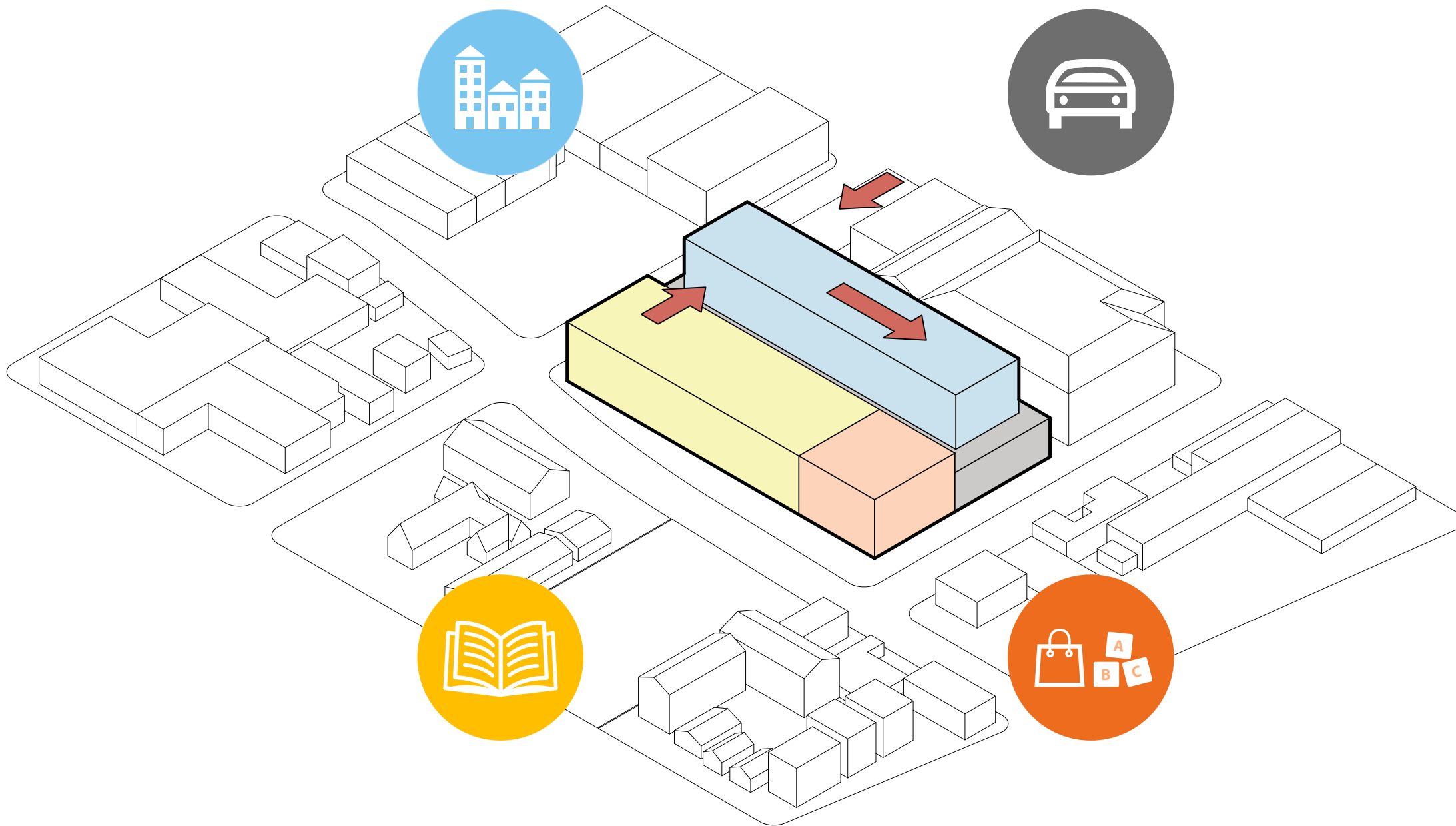


REDUCE PARKING

SANTA CRUZ DOWNTOWN LIBRARY
MIXED USE PROJECT

JAYSON
ARCHITECTURE





SET BACK HOUSING

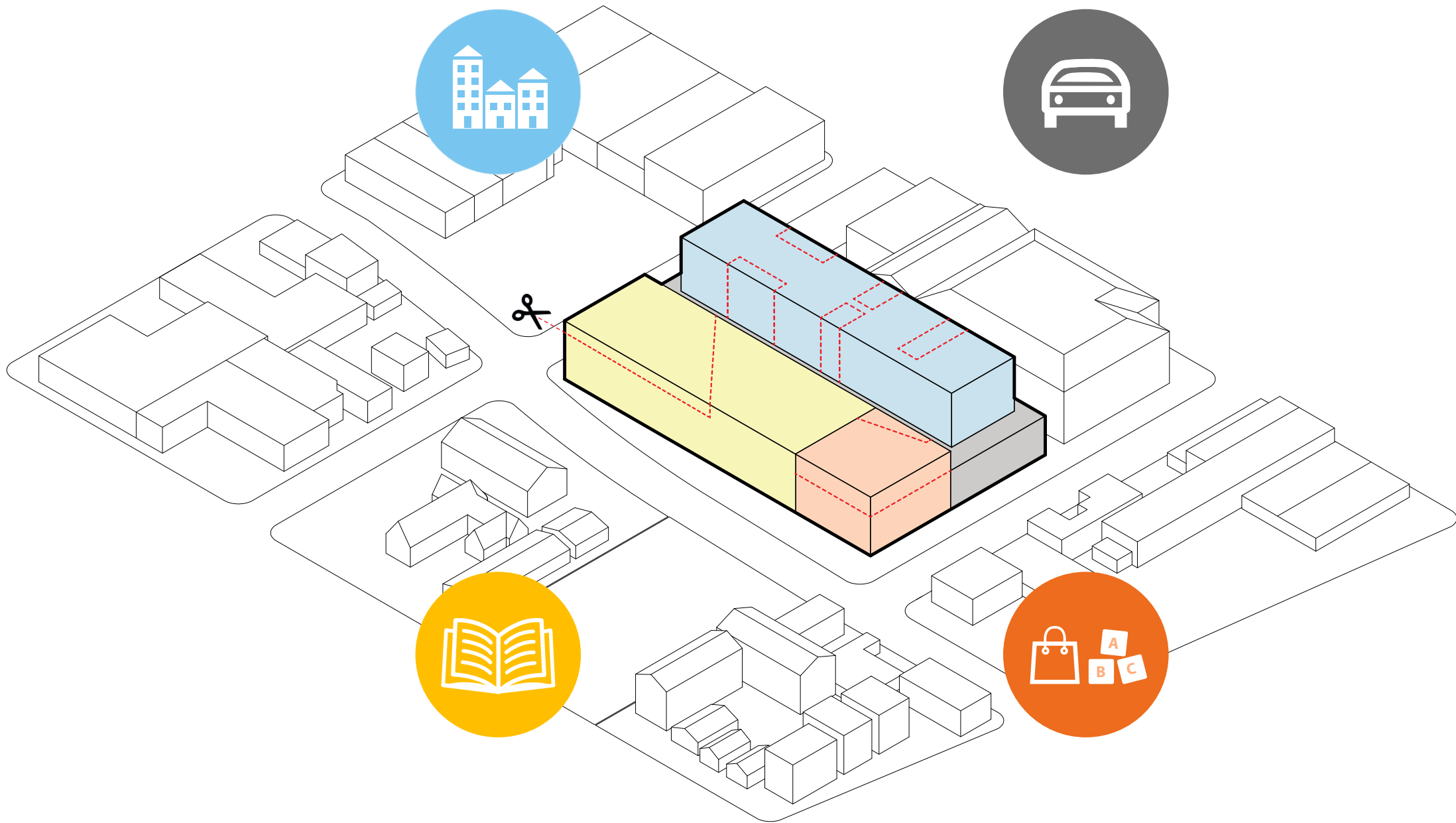
SANTA CRUZ DOWNTOWN LIBRARY
MIXED USE PROJECT

JAYSON
ARCHITECTURE

+ EDEN
HOUSING

+ forthe future
HOUSING

+ CITY OF
SANTA CRUZ

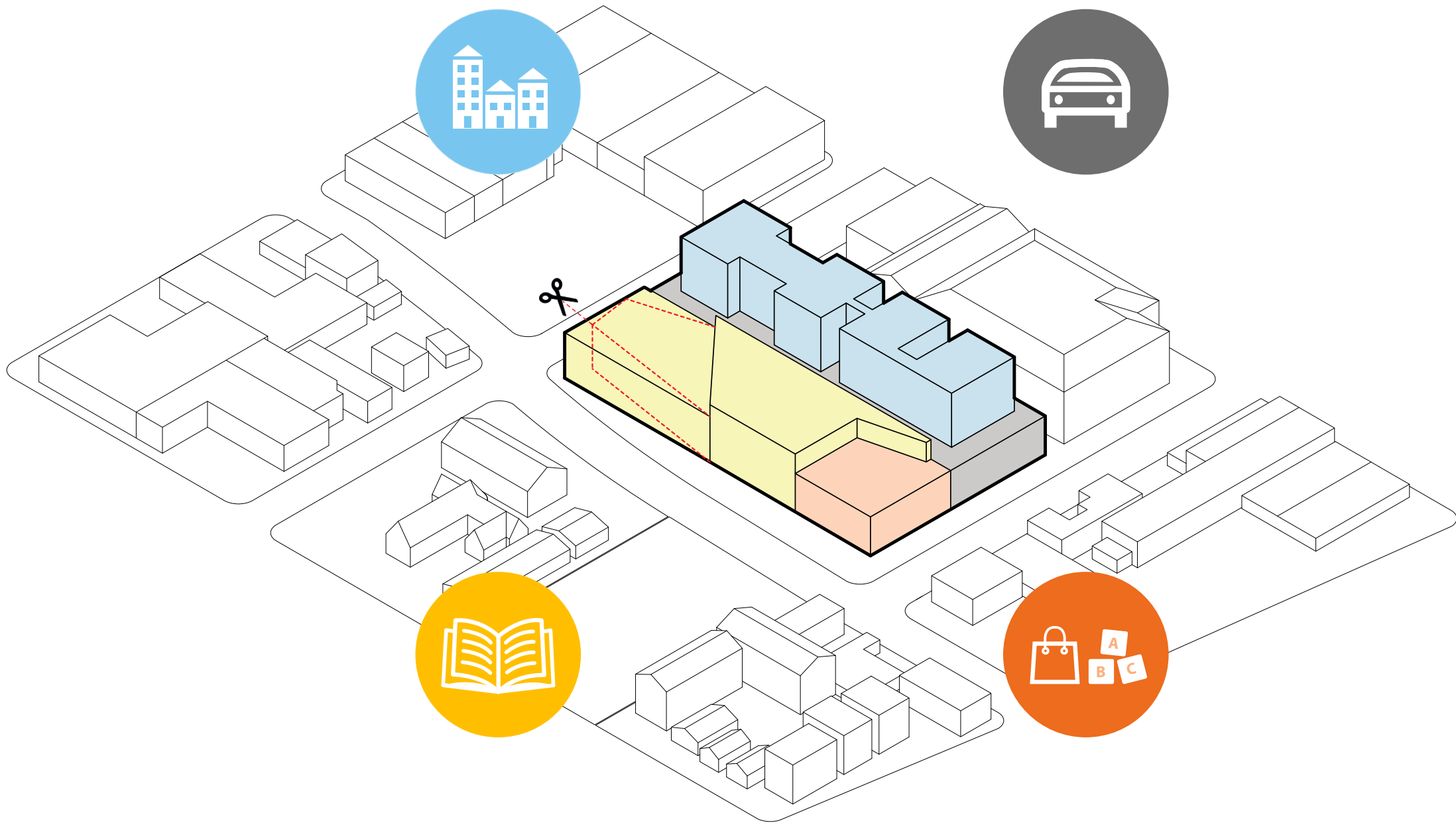


SHAPE FOR VIEWS & DAYLIGHT

SANTA CRUZ DOWNTOWN LIBRARY
MIXED USE PROJECT

JAYSON
ARCHITECTURE



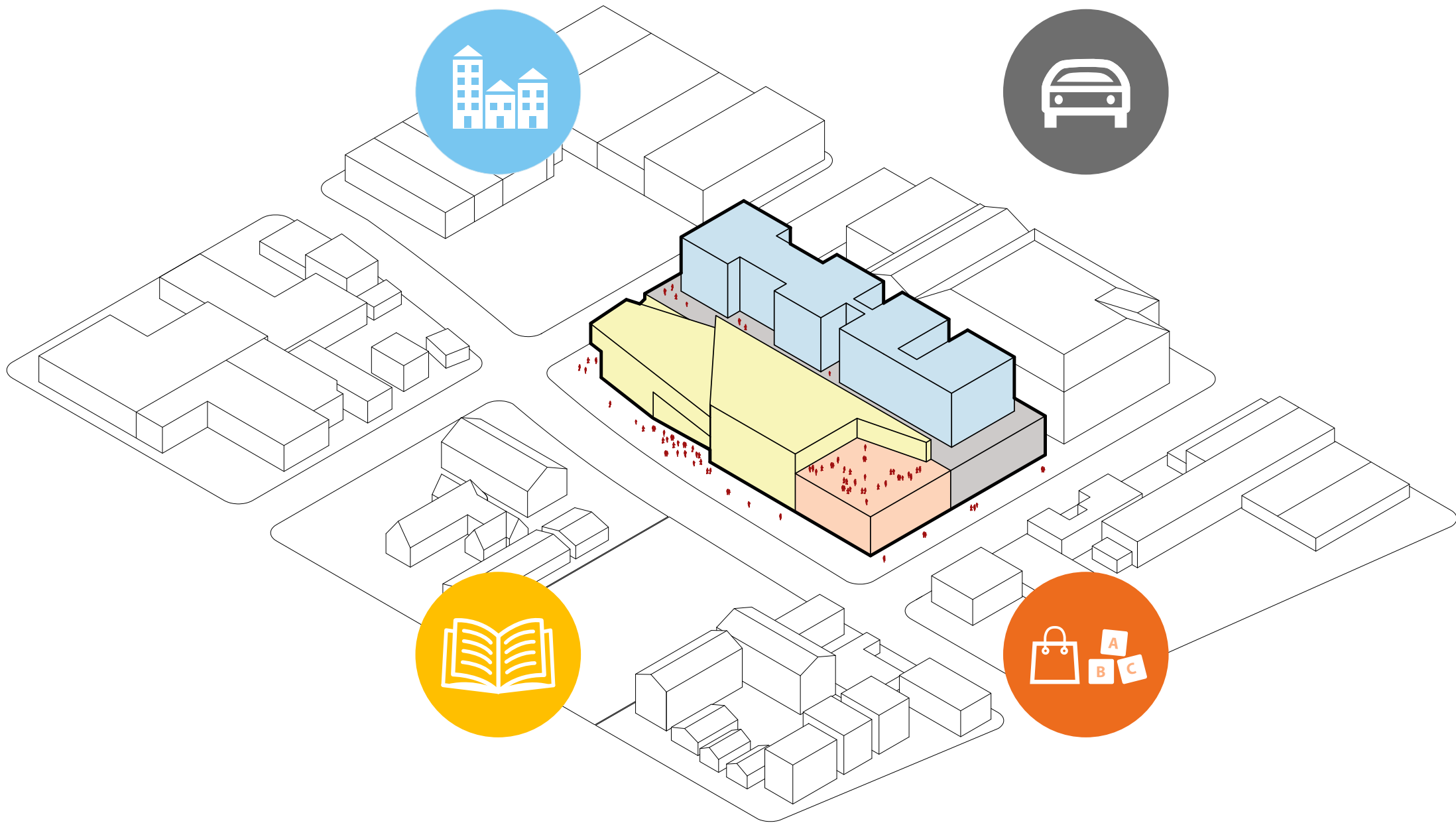


SHAPE FOR PEDESTRIANS

SANTA CRUZ DOWNTOWN LIBRARY
MIXED USE PROJECT

JAYSON
ARCHITECTURE



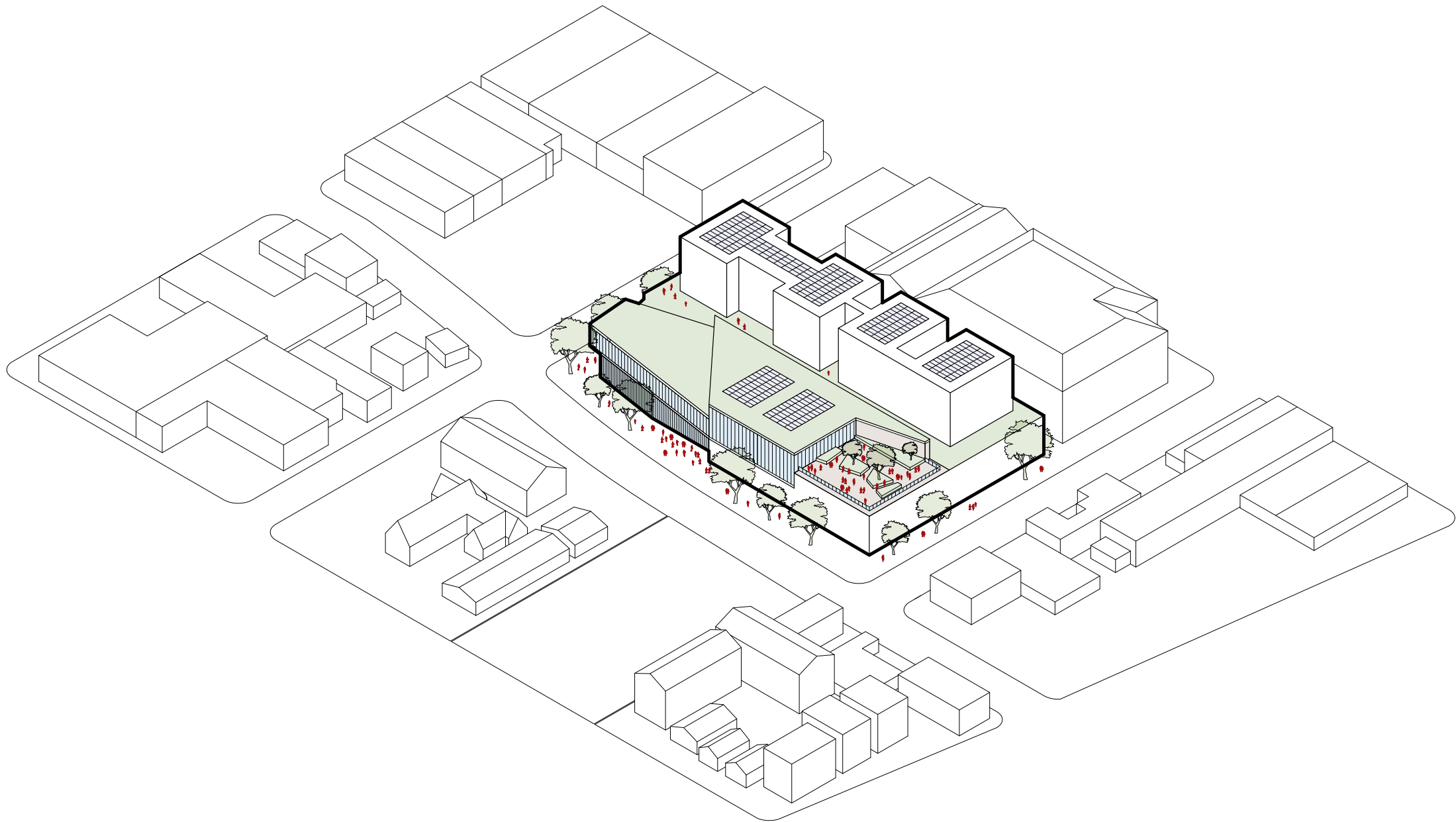


ADD LIFE

SANTA CRUZ DOWNTOWN LIBRARY
MIXED USE PROJECT

JAYSON
ARCHITECTURE



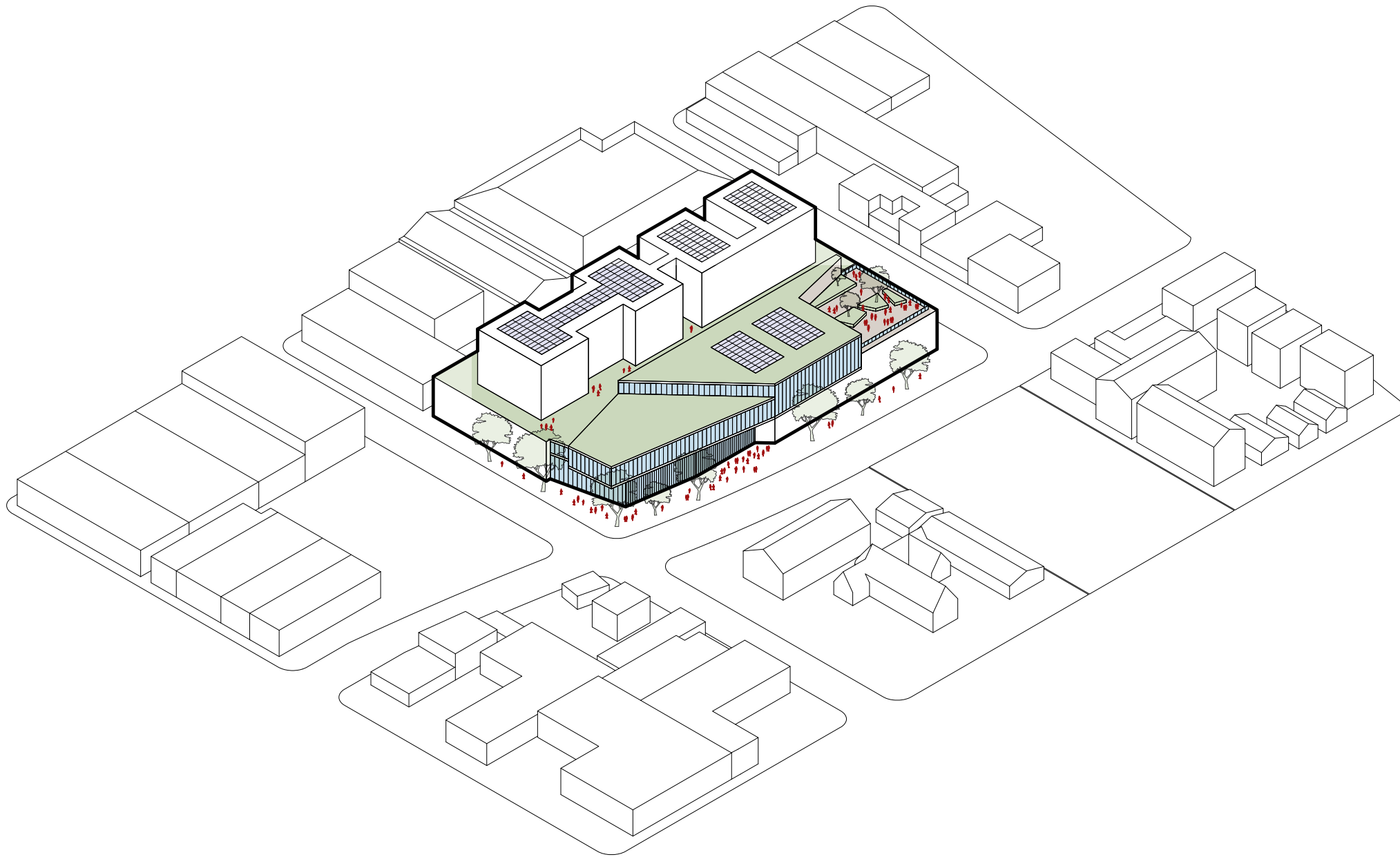


ACTIVATE

SANTA CRUZ DOWNTOWN LIBRARY
MIXED USE PROJECT

JAYSON
ARCHITECTURE





ACTIVATE

SANTA CRUZ DOWNTOWN LIBRARY
MIXED USE PROJECT

JAYSON
ARCHITECTURE



HOUSING

100 - 125 UNITS TOTAL
STUDIO/1 BED: 50 - 65 UNITS
2 BEDROOM: 25 - 30 UNITS
3 BEDROOM: 25 - 30 UNITS
COMMUNITY SPACE:
2,500 - 3,500 SF
RESIDENTIAL ROOF DECK:
14,000 - 16,000 SF



PARKING

TOTAL PARKING COUNT:
300 - 315 SPACES
(REDUCED FROM 400)

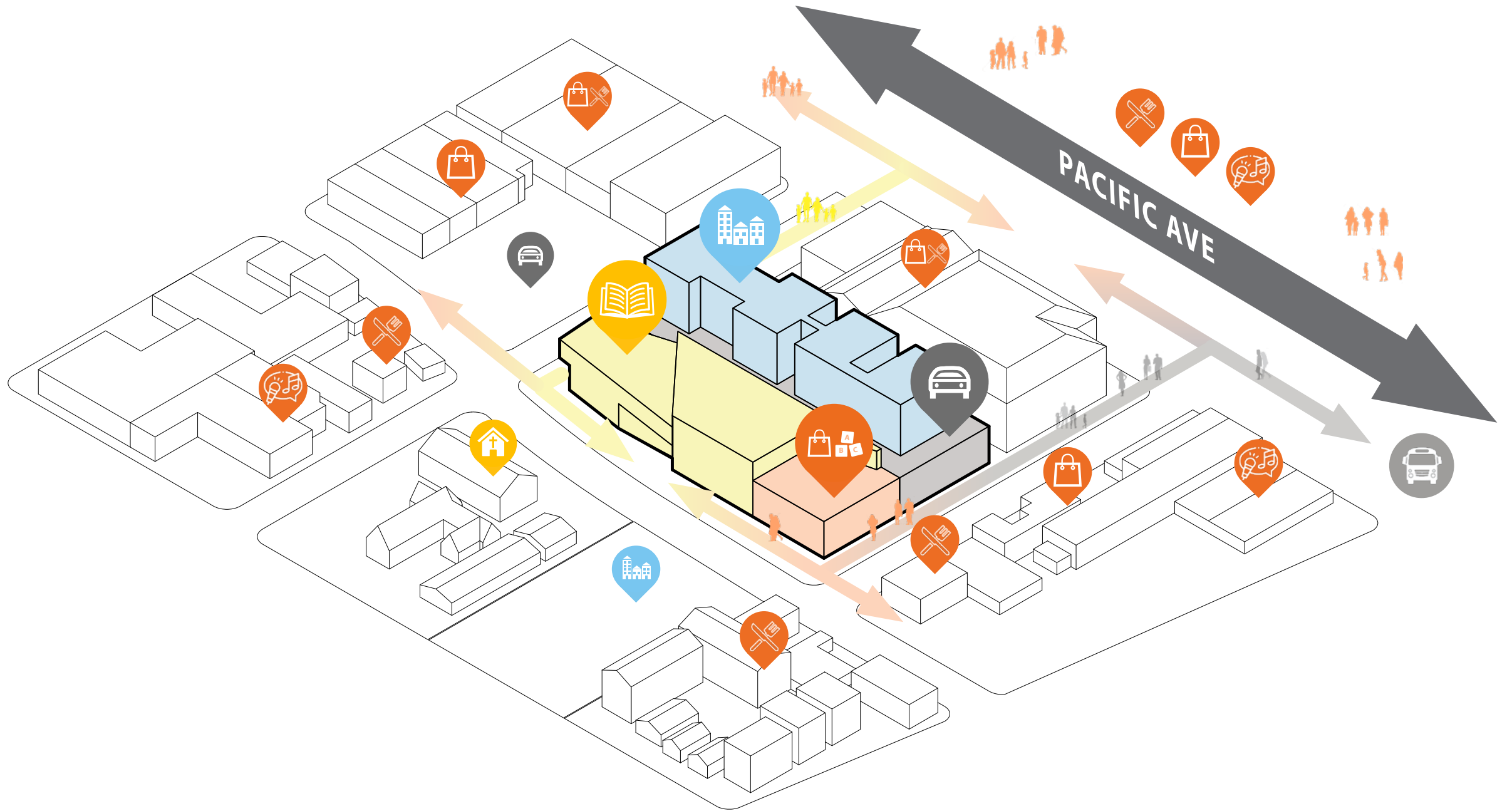
COMMERCIAL & DAY CARE

COMMERCIAL:
7,000 - 9,000 SF
DAYCARE:
1,800 - 2,500 SF
(INCLUDES OUTDOOR PLAY AREA)

LIBRARY

LIBRARY INTERIOR:
30,000 - 35,000 SF
ROOF DECK: 3,000 - 5,000 SF





PROGRAM SYNERGY

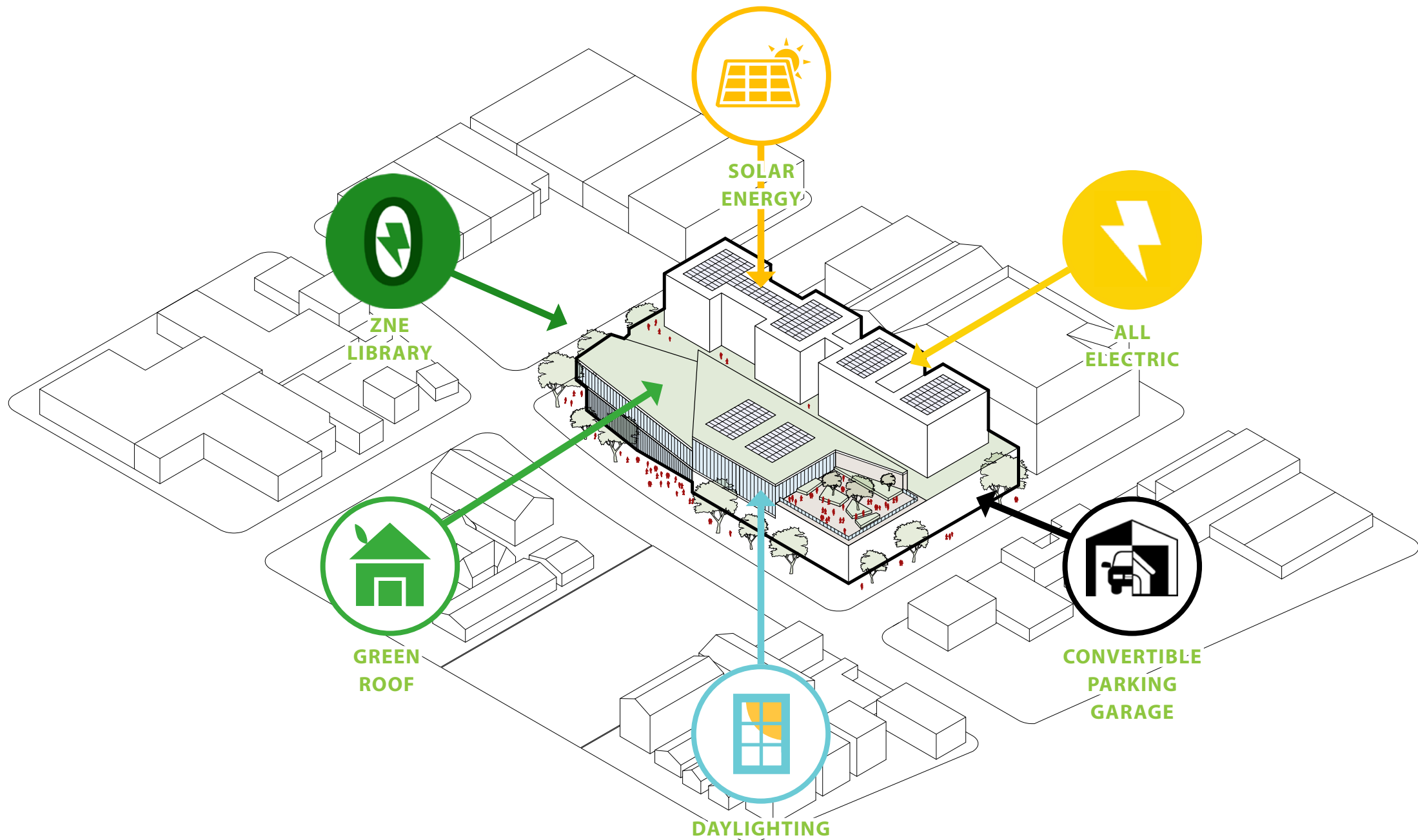
SANTA CRUZ DOWNTOWN LIBRARY
MIXED USE PROJECT

JAYSON
ARCHITECTURE

+ EDEN
HOUSING

+ forthe future
HOUSING

+ CITY OF
SANTA CRUZ



SUSTAINABILITY GOALS

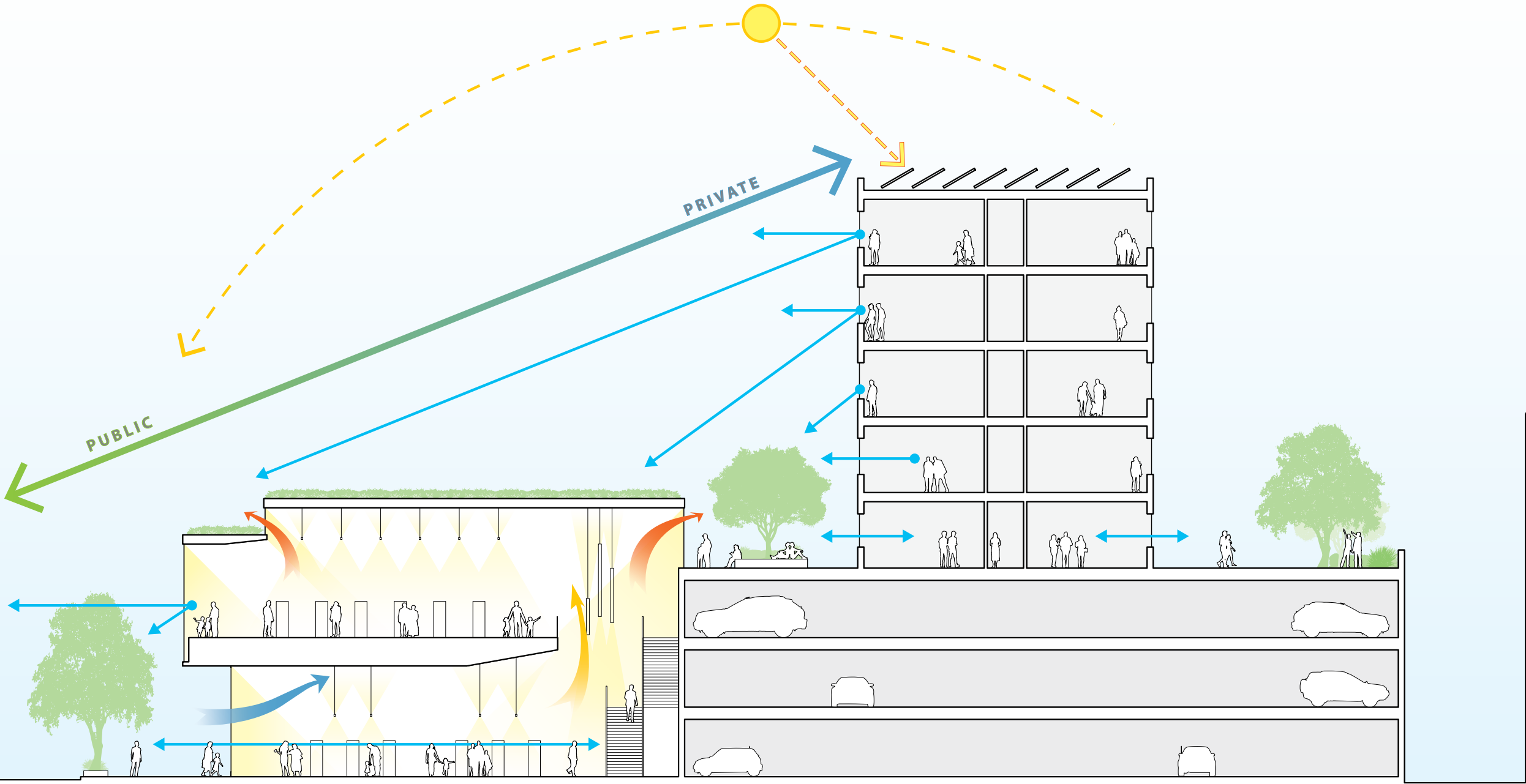
SANTA CRUZ DOWNTOWN LIBRARY
MIXED USE PROJECT

JAYSON
ARCHITECTURE

+ EDEN
HOUSING

+ forthe future
HOUSING

+ CITY OF
SANTA CRUZ



SITE SECTION

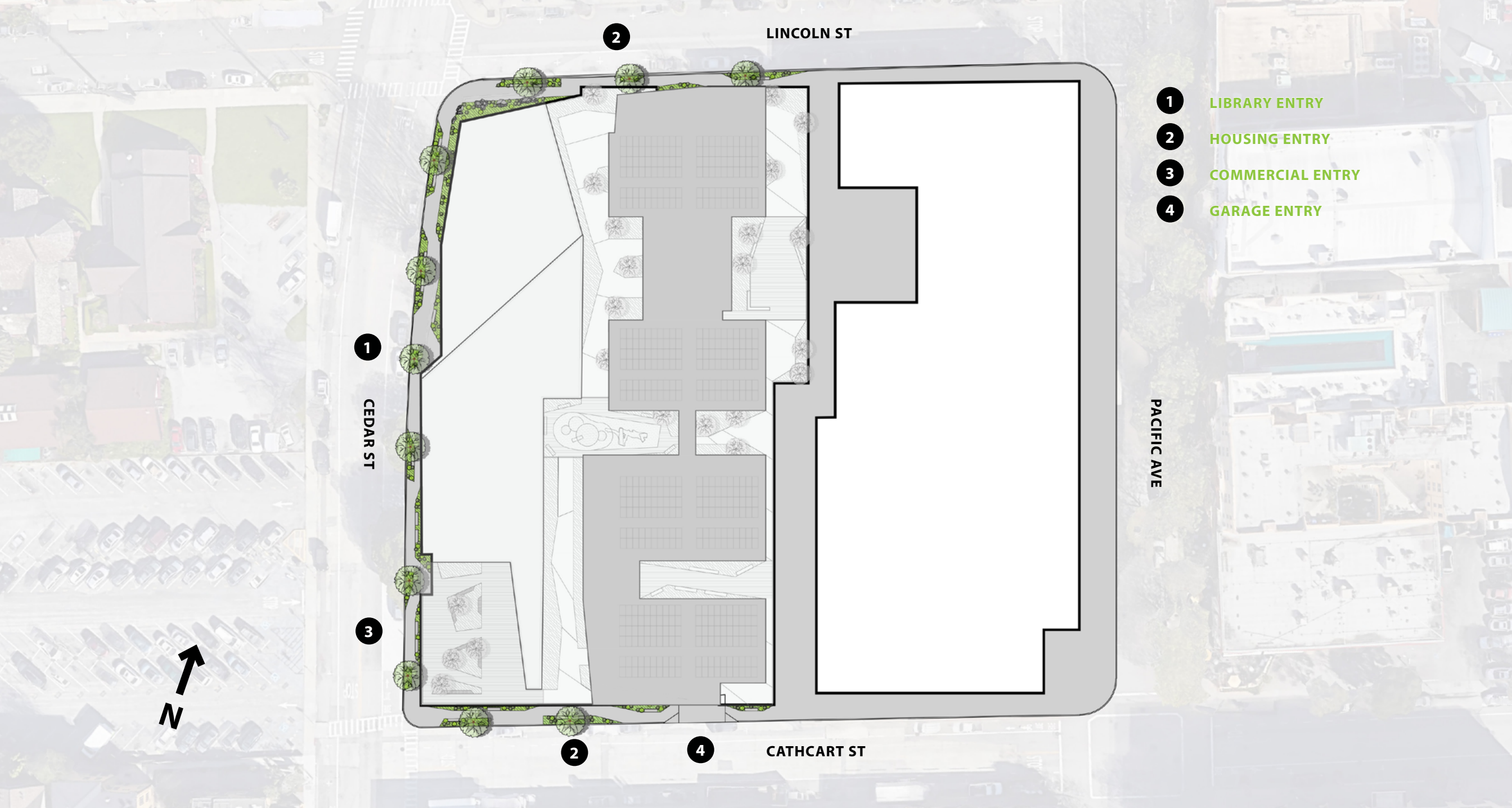
SANTA CRUZ DOWNTOWN LIBRARY
MIXED USE PROJECT

JAYSON
ARCHITECTURE

EDEN
HOUSING

for the future
HOUSING

CITY OF
SANTA CRUZ



- 1 LIBRARY ENTRY
- 2 HOUSING ENTRY
- 3 COMMERCIAL ENTRY
- 4 GARAGE ENTRY

SITE PLAN

SANTA CRUZ DOWNTOWN LIBRARY
MIXED USE PROJECT

JAYSON
 ARCHITECTURE

EDEN
 HOUSING

for the future
 HOUSING

CITY OF
SANTA CRUZ



LINCOLN ST

CEDAR ST

PACIFIC AVE

CATHCART ST



- 1 LIBRARY ROOF DECK
- 2 RESIDENTIAL ROOF DECK
- 3 COMMUNITY OUTDOOR SPACE
- 4 CHILDREN'S PLAY AREA
- 5 TEEN PLAY/RECREATION SPACE
- 6 SOLAR PANELS
- 7 GREEN ROOF

ROOFTOP PLAN

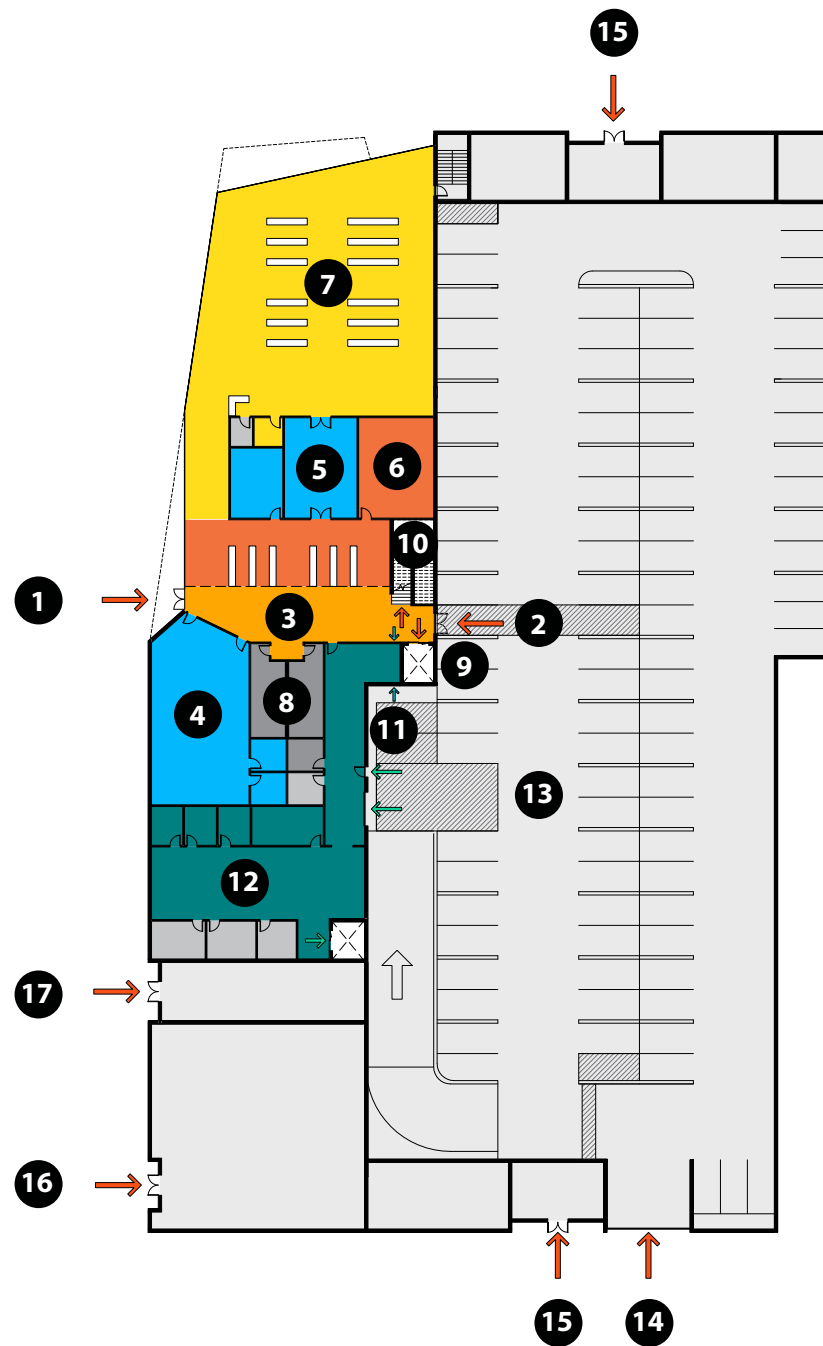
SANTA CRUZ DOWNTOWN LIBRARY
MIXED USE PROJECT

JAYSON
ARCHITECTURE

+ EDEN
HOUSING

+ forthe
future
HOUSING

+ CITY OF
SANTA CRUZ



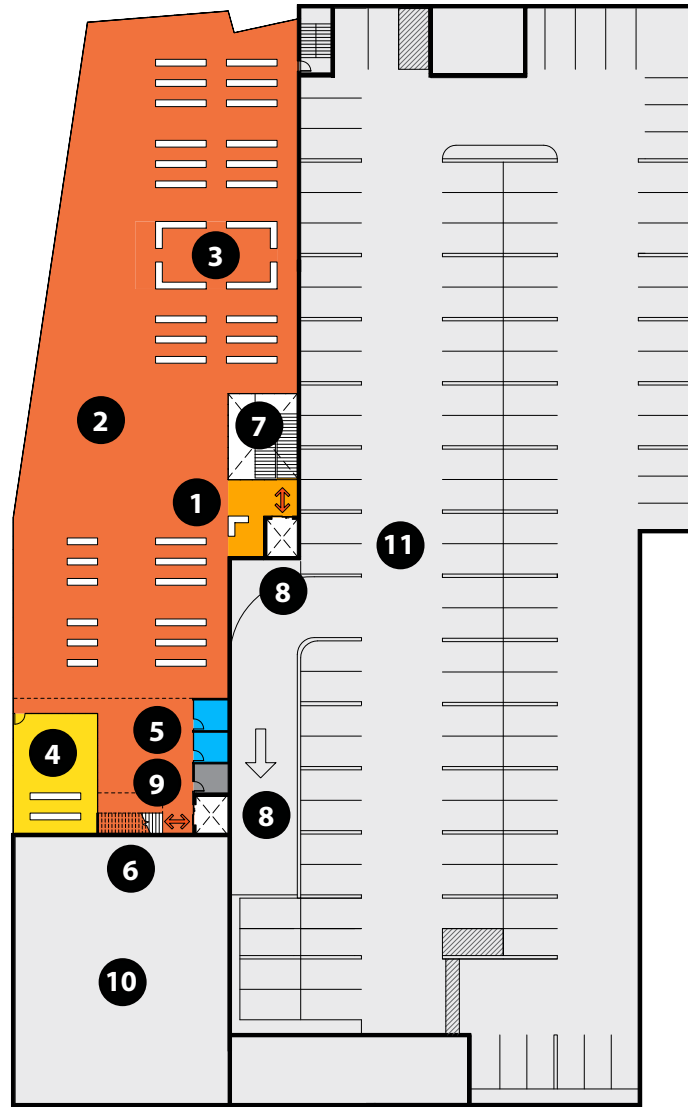
- 1 LIBRARY ENTRY
- 2 ENTRY FROM GARAGE
- 3 LOBBY (OPEN AFTER HOURS)
- 4 COMMUNITY ROOM
- 5 MEDIUM MEETING ROOM
- 6 ADULT LEARNING
- 7 CHILDREN'S
- 8 PUBLIC RESTROOMS
- 9 ELEVATOR
- 10 PRIMARY STAIR
- 11 AFTER HOURS BOOKDROP
- 12 STAFF
- 13 PARKING
- 14 PARKING ENTRY
- 15 RESIDENTIAL ENTRY
- 16 COMMERCIAL ENTRY
- 17 DAYCARE ENTRY

FIRST FLOOR

SANTA CRUZ DOWNTOWN LIBRARY
MIXED USE PROJECT

JAYSON
ARCHITECTURE





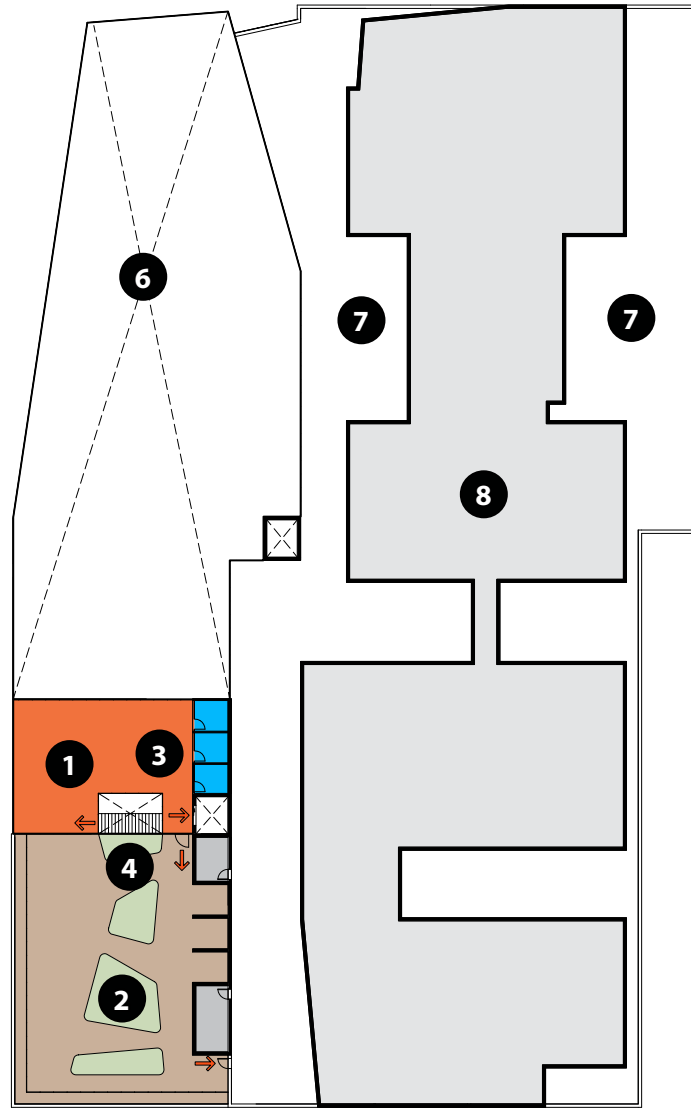
- 1 UPSTAIRS LOBBY / INFO DESK
- 2 FICTION / NON FICTION
- 3 GENEALOGY
- 4 TEENS
- 5 GROUP STUDY
- 6 STAIR TO ROOF DECK
- 7 PRIMARY STAIR
- 8 ELEVATOR
- 9 RESTROOM
- 10 COMMERCIAL
- 11 PARKING

SECOND FLOOR

SANTA CRUZ DOWNTOWN LIBRARY
MIXED USE PROJECT

JAYSON
ARCHITECTURE





- 1 MEZZANINE
- 2 LIBRARY ROOF DECK
- 3 GROUP STUDY
- 4 STAIR TO LIBRARY
- 5 ELEVATOR
- 6 OPEN TO LIBRARY BELOW
- 7 RESIDENTIAL ROOF DECK
- 8 RESIDENTIAL UNITS

ROOF DECK / MEZZANINE

SANTA CRUZ DOWNTOWN LIBRARY
MIXED USE PROJECT

JAYSON
ARCHITECTURE





CULTURAL CONTEXT

SANTA CRUZ DOWNTOWN LIBRARY
MIXED USE PROJECT

JAYSON
ARCHITECTURE

+ EDEN
HOUSING

+ forthe
future
HOUSING

+ CITY OF
SANTA CRUZ

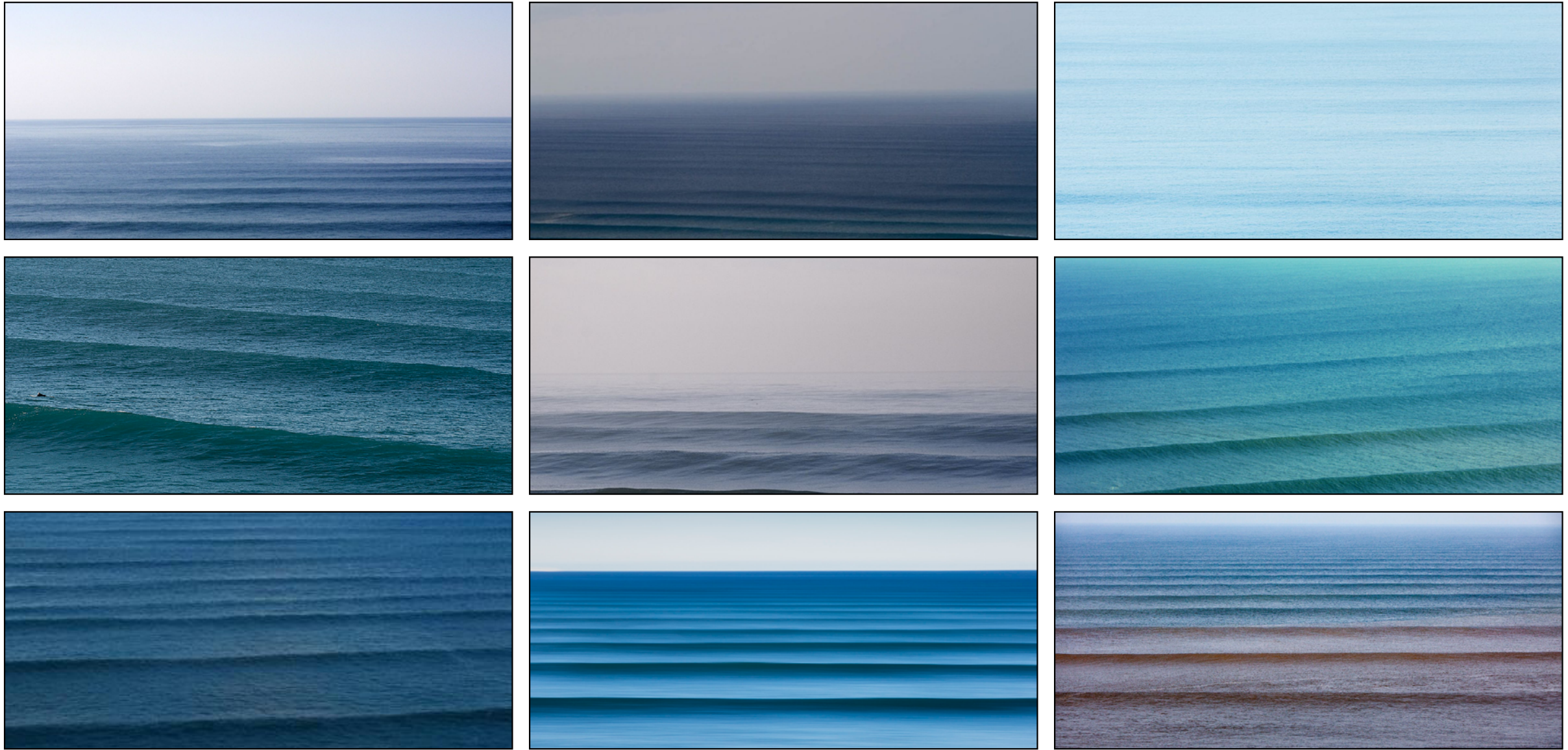


NATURAL CONTEXT

SANTA CRUZ DOWNTOWN LIBRARY
MIXED USE PROJECT

JAYSON
ARCHITECTURE



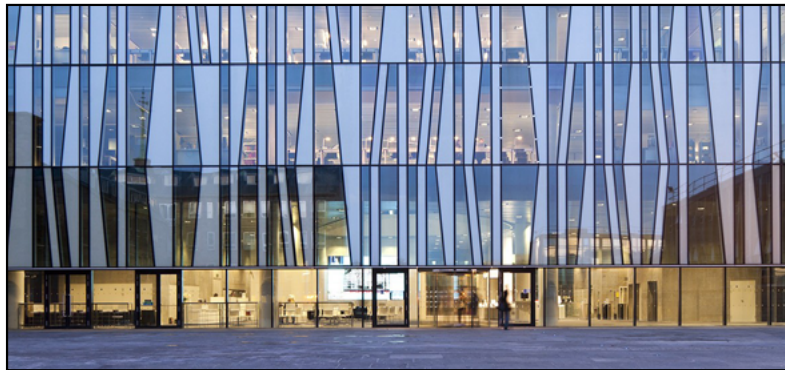
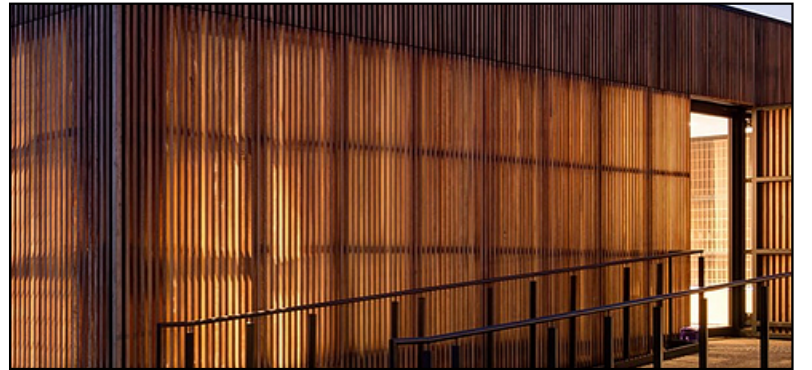
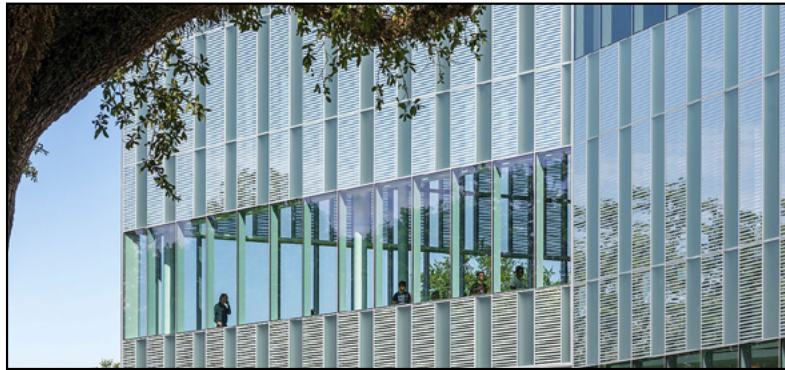
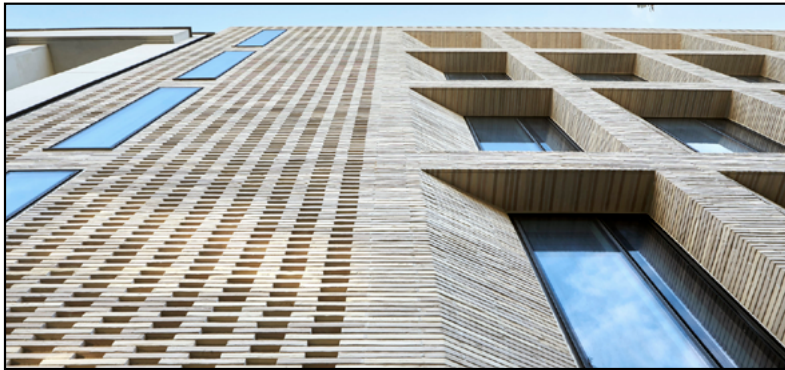


NATURAL CONTEXT

SANTA CRUZ DOWNTOWN LIBRARY
MIXED USE PROJECT

JAYSON
ARCHITECTURE



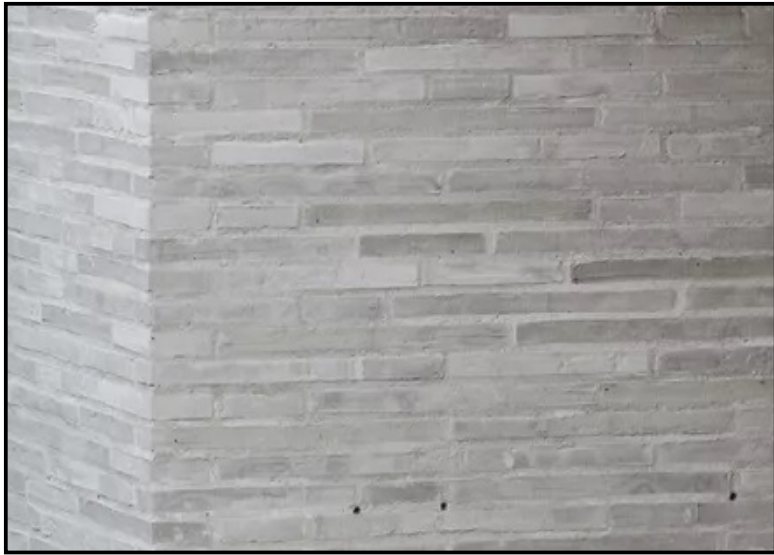
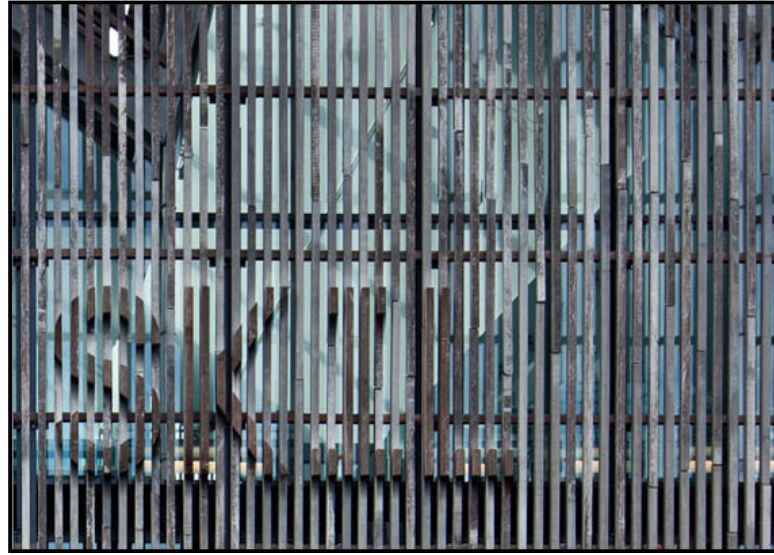


PRECEDENTS

SANTA CRUZ DOWNTOWN LIBRARY
MIXED USE PROJECT

JAYSON
ARCHITECTURE



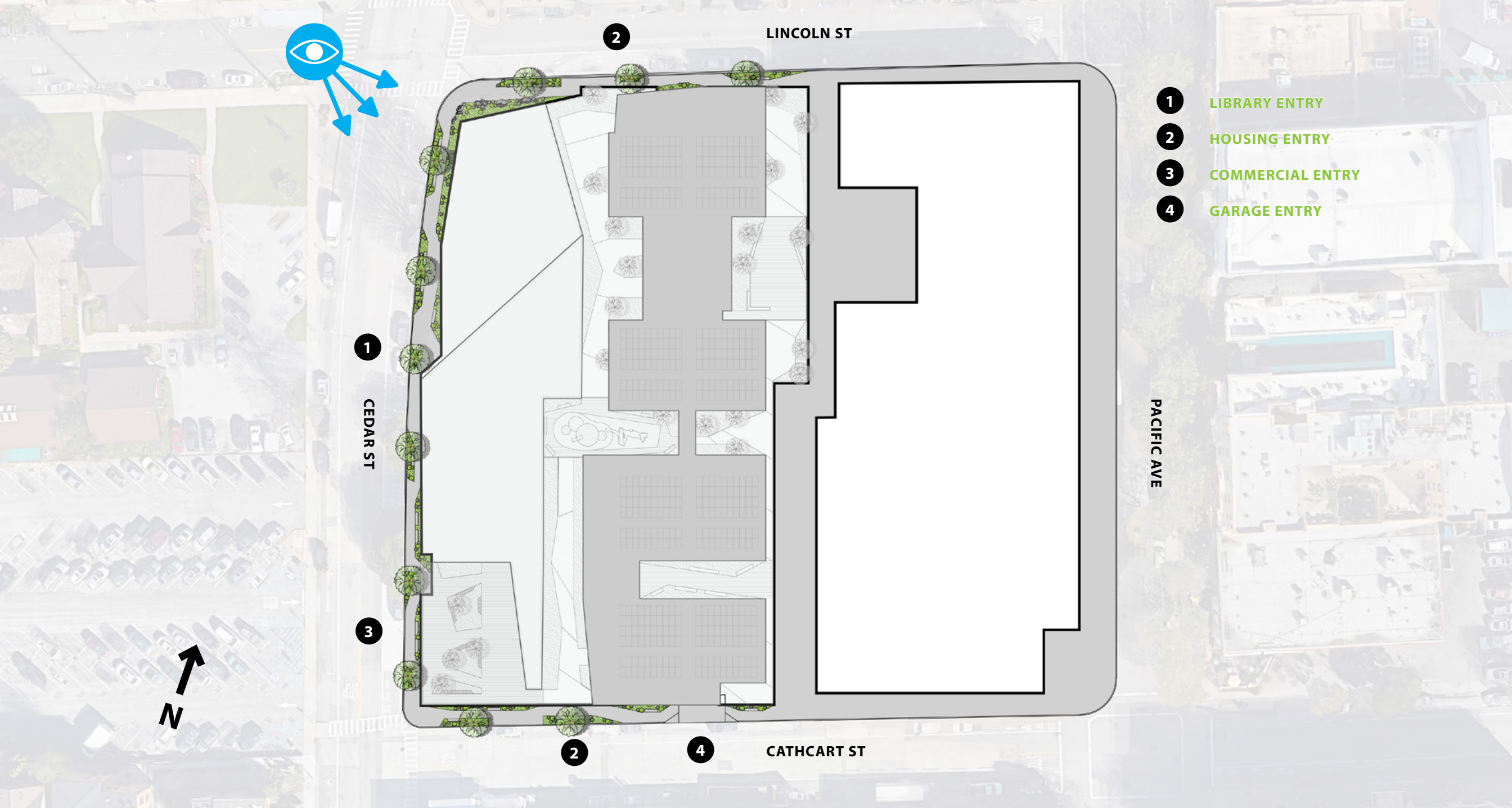


MATERIAL PALETTE

SANTA CRUZ DOWNTOWN LIBRARY
MIXED USE PROJECT

JAYSON
ARCHITECTURE





- 1 LIBRARY ENTRY
- 2 HOUSING ENTRY
- 3 COMMERCIAL ENTRY
- 4 GARAGE ENTRY

CEDAR & LINCOLN

SANTA CRUZ DOWNTOWN LIBRARY
MIXED USE PROJECT

JAYSON
 ARCHITECTURE



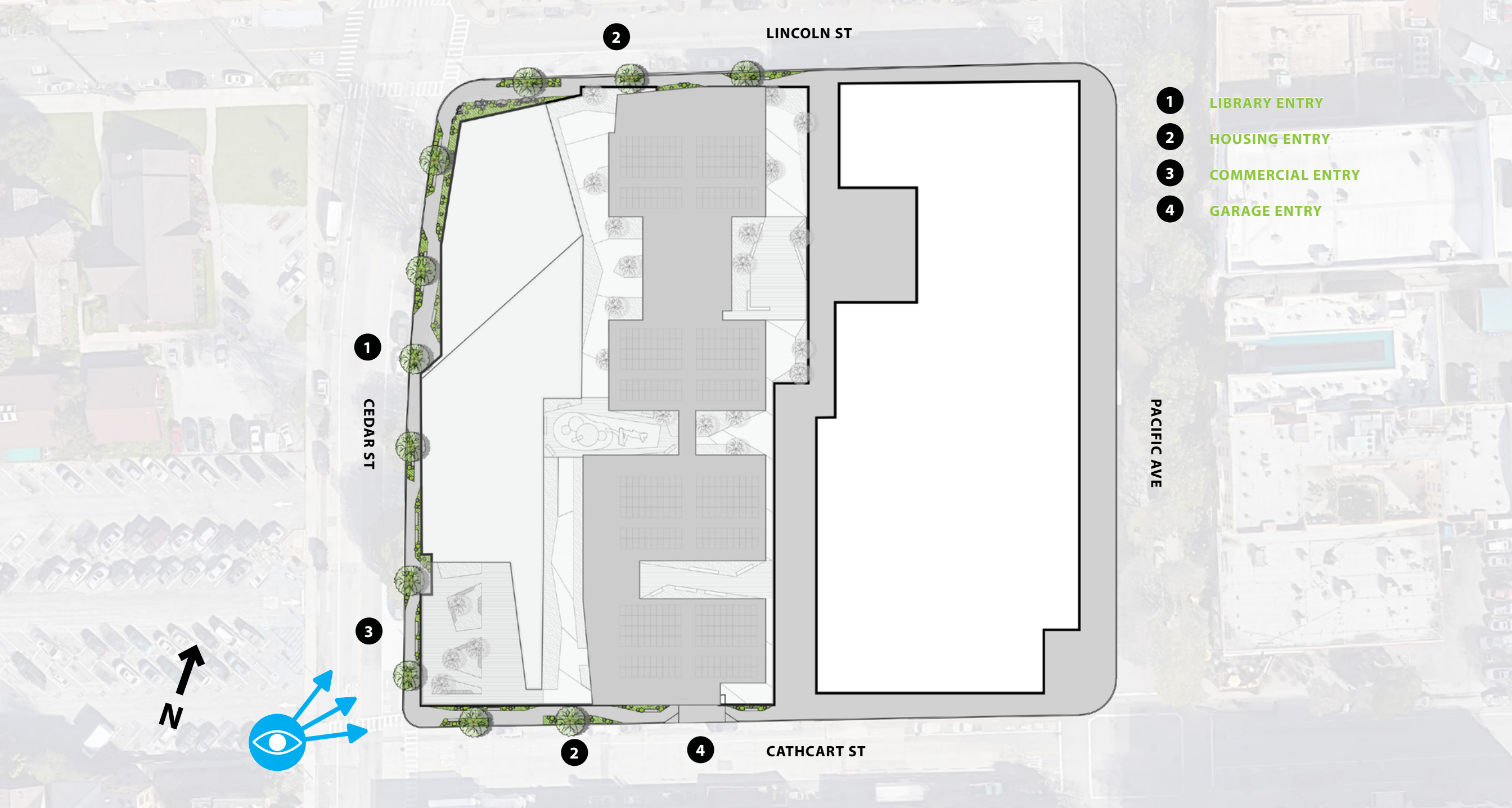


CEDAR & LINCOLN

SANTA CRUZ DOWNTOWN LIBRARY
MIXED USE PROJECT

JAYSON
ARCHITECTURE





- 1 LIBRARY ENTRY
- 2 HOUSING ENTRY
- 3 COMMERCIAL ENTRY
- 4 GARAGE ENTRY

CEDAR & CATHCART

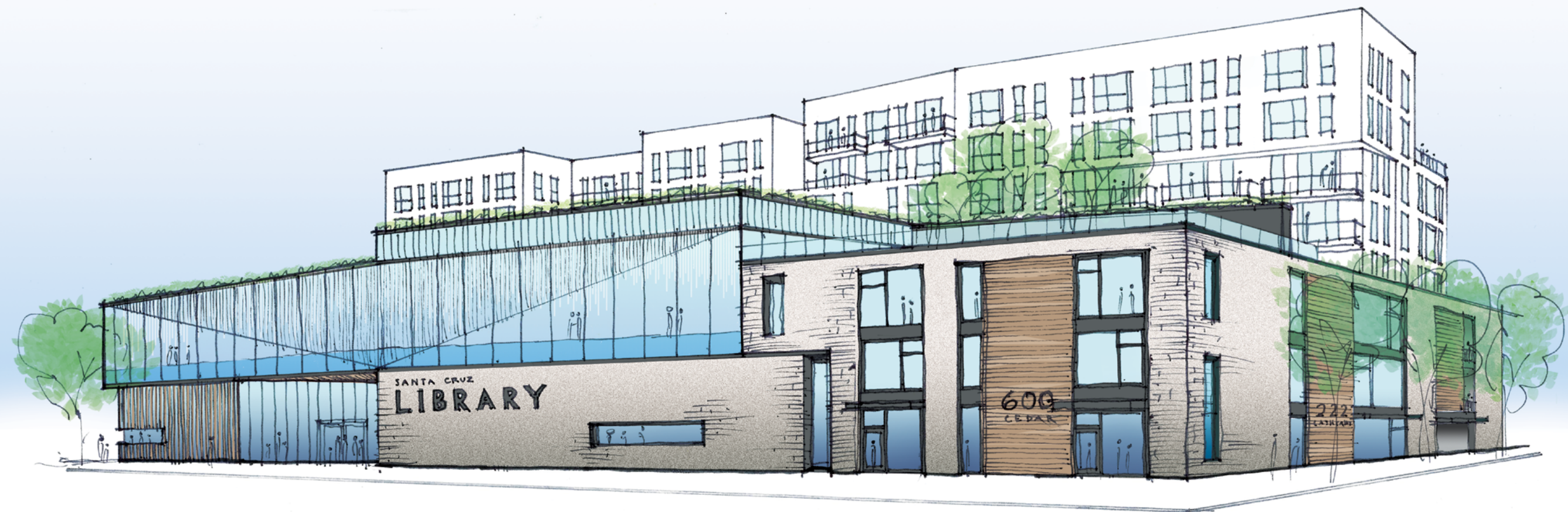
SANTA CRUZ DOWNTOWN LIBRARY
MIXED USE PROJECT

JAYSON
ARCHITECTURE

+ EDEN
HOUSING

+ forthe future
HOUSING

+ CITY OF
SANTA CRUZ



CEDAR & CATHCART

SANTA CRUZ DOWNTOWN LIBRARY
MIXED USE PROJECT

JAYSON +
ARCHITECTURE





LINCOLN ST

CEDAR ST

PACIFIC AVE

CATHCART ST



- 1 LIBRARY ROOF DECK
- 2 RESIDENTIAL ROOF DECK
- 3 COMMUNITY OUTDOOR SPACE
- 4 CHILDREN'S PLAY AREA
- 5 TEEN PLAY/RECREATION SPACE
- 6 SOLAR PANELS
- 7 GREEN ROOF



ROOF DECK

SANTA CRUZ DOWNTOWN LIBRARY
MIXED USE PROJECT

JAYSON
ARCHITECTURE

+ EDEN
HOUSING

+ forthe
future
HOUSING

+ CITY OF
SANTA CRUZ

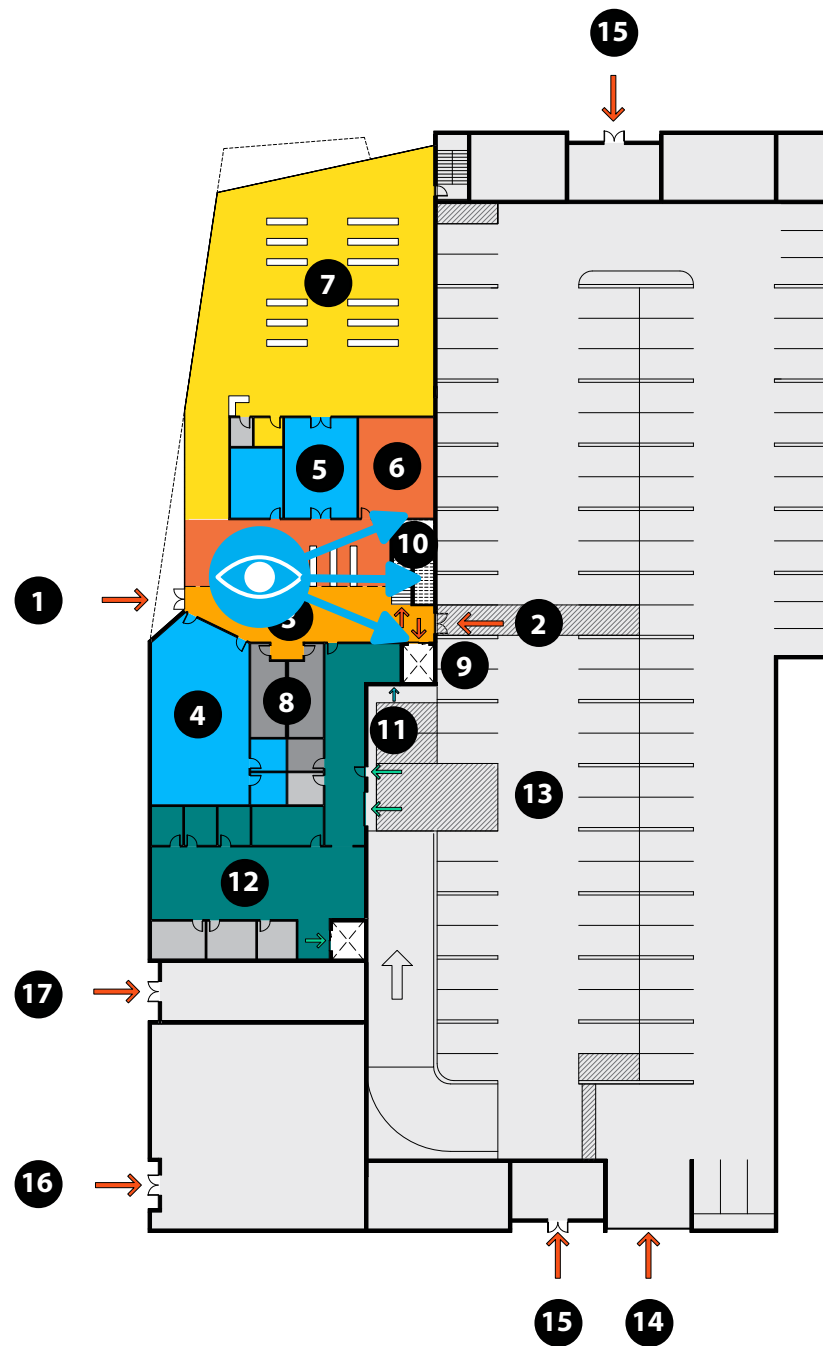


ROOF DECK

SANTA CRUZ DOWNTOWN LIBRARY
MIXED USE PROJECT

JAYSON
ARCHITECTURE





- 1 LIBRARY ENTRY
- 2 ENTRY FROM GARAGE
- 3 LOBBY (OPEN AFTER HOURS)
- 4 COMMUNITY ROOM
- 5 MEDIUM MEETING ROOM
- 6 ADULT LEARNING
- 7 CHILDREN'S
- 8 PUBLIC RESTROOMS
- 9 ELEVATOR
- 10 PRIMARY STAIR
- 11 AFTER HOURS BOOKDROP
- 12 STAFF
- 13 PARKING
- 14 PARKING ENTRY
- 15 RESIDENTIAL ENTRY
- 16 COMMERCIAL ENTRY
- 17 DAYCARE ENTRY

LOBBY

SANTA CRUZ DOWNTOWN LIBRARY
MIXED USE PROJECT

JAYSON
ARCHITECTURE



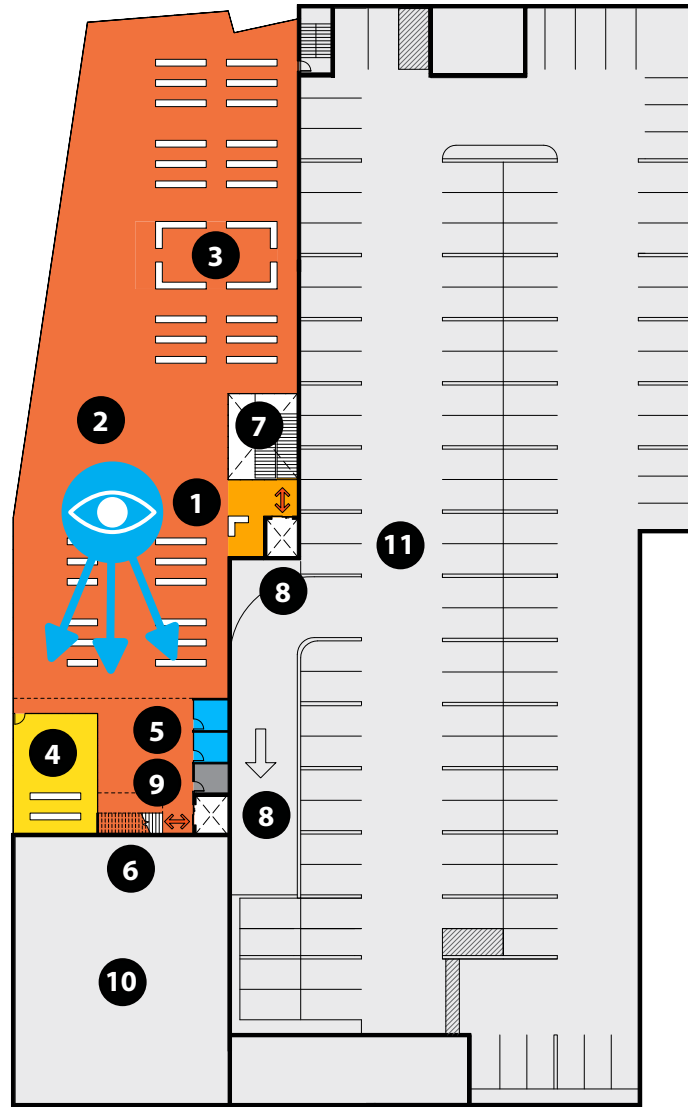


LOBBY

SANTA CRUZ DOWNTOWN LIBRARY
MIXED USE PROJECT

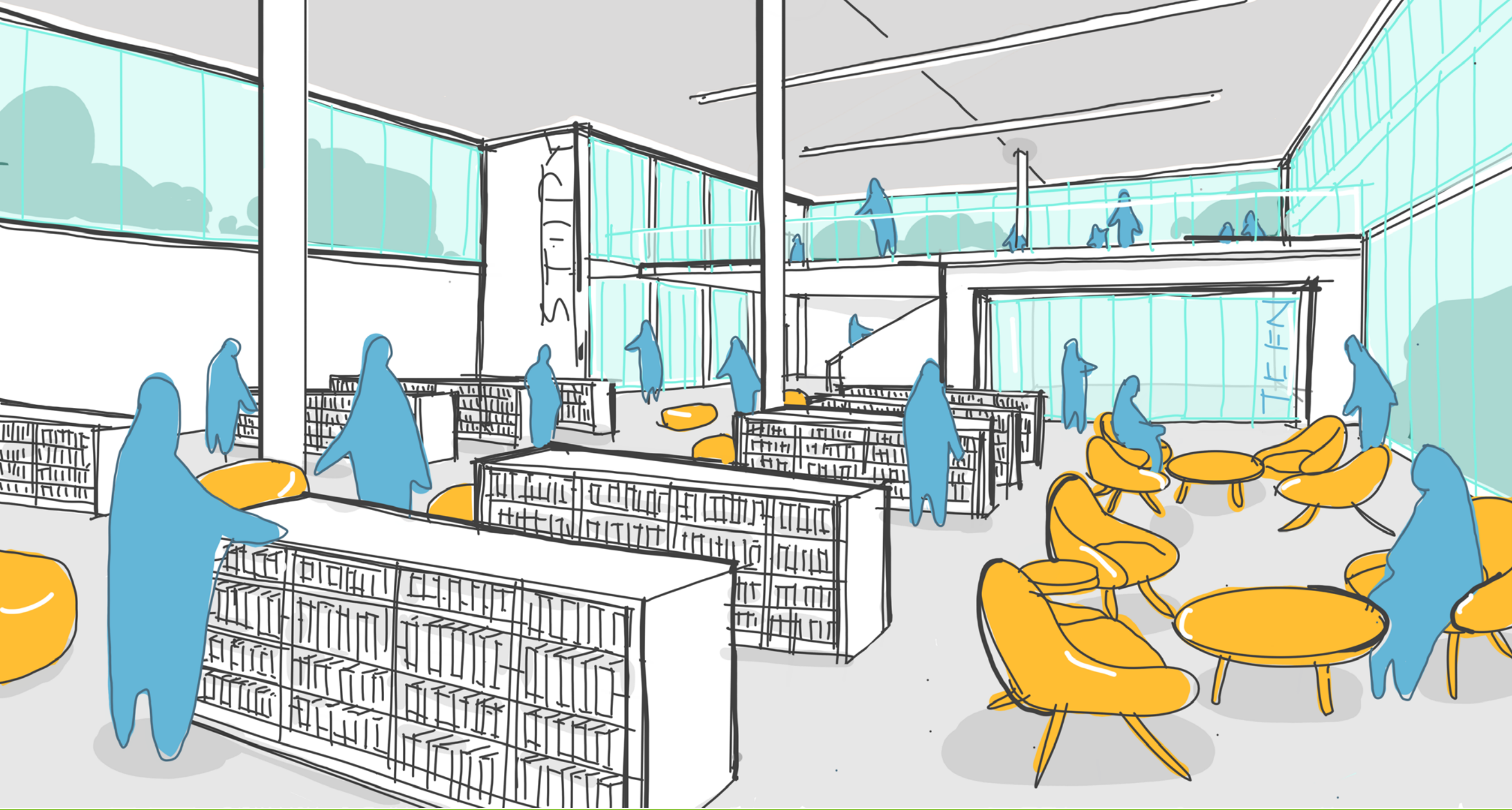
JAYSON
ARCHITECTURE





- 1 UPSTAIRS LOBBY / INFO DESK
- 2 FICTION / NON FICTION
- 3 GENEALOGY
- 4 TEENS
- 5 GROUP STUDY
- 6 STAIR TO ROOF DECK
- 7 PRIMARY STAIR
- 8 ELEVATOR
- 9 RESTROOM
- 10 COMMERCIAL
- 11 PARKING

SECOND FLOOR



SECOND FLOOR

SANTA CRUZ DOWNTOWN LIBRARY
MIXED USE PROJECT

JAYSON
ARCHITECTURE





COMMUNITY DIALOGUE

I. WHAT DID YOU LIKE ABOUT THE DESIGN PRESENTED TODAY?

II. HOW DID THE DESIGN PRESENTED TODAY DIFFER FROM YOUR EXPECTATIONS, GOOD OR BAD?

III. ADDITIONAL COMMENTS?

I. WHAT DID YOU LIKE ABOUT THE DESIGN PRESENTED TODAY?

COMMUNITY DIALOGUE

SANTA CRUZ DOWNTOWN LIBRARY
MIXED USE PROJECT

JAYSON +
ARCHITECTURE





II. HOW DID THE DESIGN PRESENTED TODAY DIFFER FROM YOUR EXPECTATIONS, GOOD OR BAD?

COMMUNITY DIALOGUE

SANTA CRUZ DOWNTOWN LIBRARY
MIXED USE PROJECT

JAYSON +
ARCHITECTURE

EDEN
HOUSING

for the future
HOUSING

CITY OF
SANTA CRUZ

III. ADDITIONAL COMMENTS?

COMMUNITY DIALOGUE

SANTA CRUZ DOWNTOWN LIBRARY
MIXED USE PROJECT

JAYSON +
ARCHITECTURE

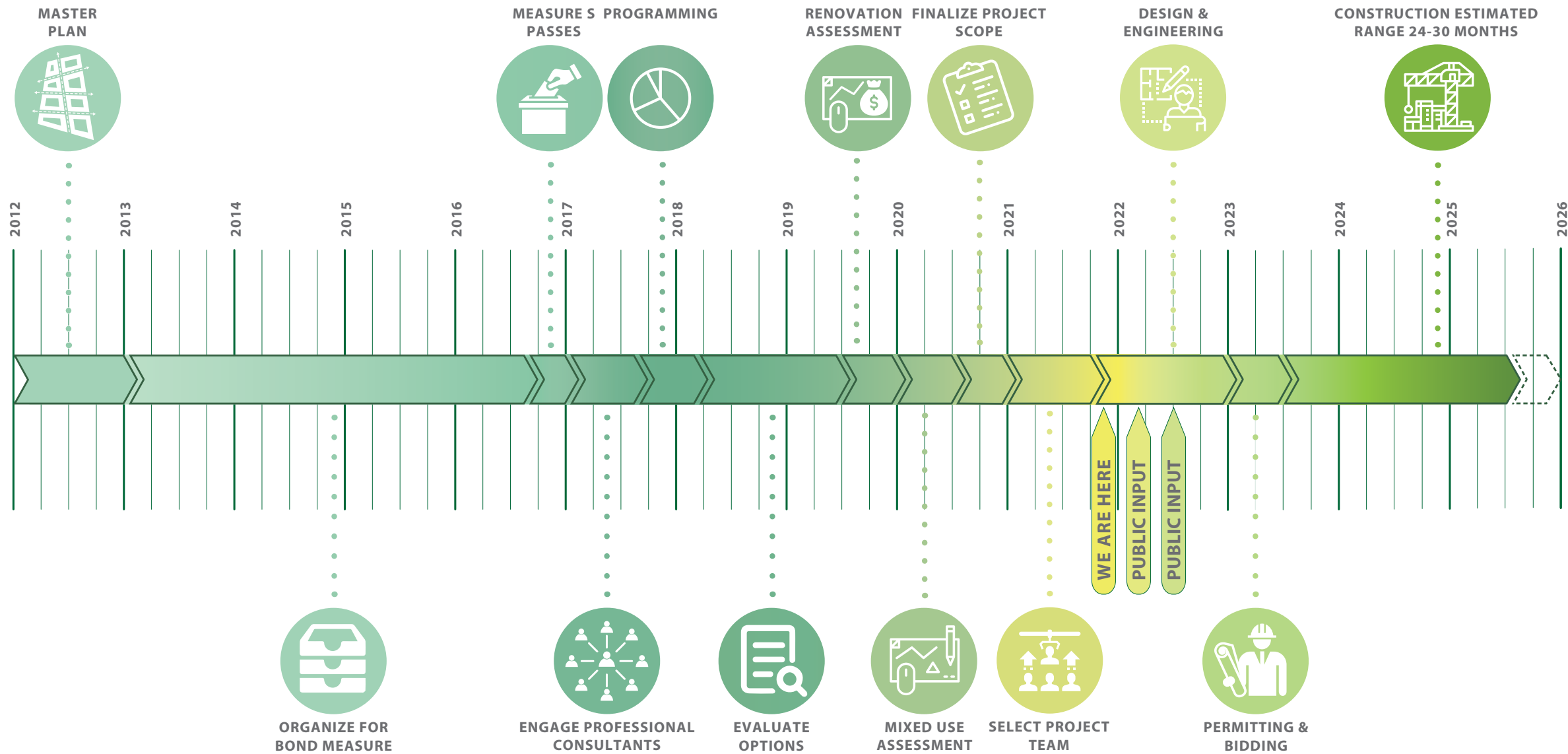




WHAT WE HEARD



NEXT STEPS



PROGRESS

SANTA CRUZ DOWNTOWN LIBRARY
MIXED USE PROJECT

JAYSON
ARCHITECTURE

EDEN
HOUSING

for the future
HOUSING

CITY OF
SANTA CRUZ



THANK YOU