



# **LIVE OAK LIBRARY ANNEX PROJECT**

**COUNTY OF SANTA CRUZ**

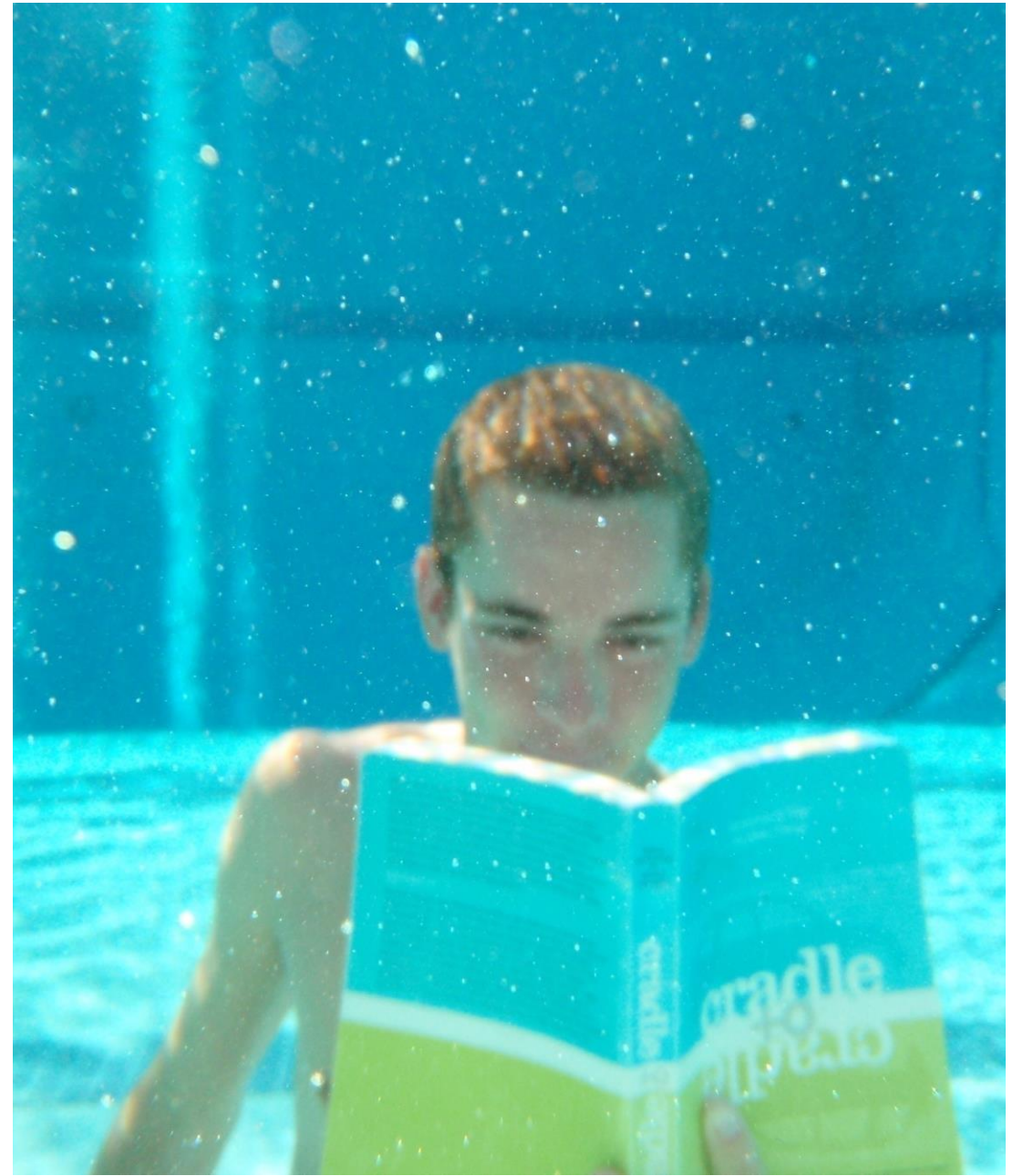
**December 4, 2018**

## **COMMUNITY MEETING #3**



"A person with a book goes to the **pool**. A library begins that way."

Chris Noll



# COMMUNITY MEETING

# 3

- 1. Presenter Introductions**
- 2. Reporting from Community Meeting #2**
- 3. Preferred Concept and Discussion**
- 4. Live Oak Annex Project Goals**
- 5. Next Steps**

# Presenter Introductions

# Team Introductions



## Santa Cruz County Parks

**Jeff Gaffney**

Director of Parks, County of Santa Cruz

## Santa Cruz Public Works

**Betsey Lynberg**

Director of Capital Projects

**Damon Adlao**

Project Manager



SANTA CRUZ  
PUBLIC LIBRARIES

## Santa Cruz Public Libraries

**Susan Nemitz**

Director of Santa Cruz Public  
Libraries

**Heather Norquist**

Regional Manager for Santa Cruz  
Public Libraries

**Janis O'Driscoll**

Deputy Director  
Santa Cruz Public Libraries

**NOLL  
& TAM**  
ARCHITECTS

## Noll & Tam Architects

**Scott Salge**

Principal

**Chris Noll**

Principal

**Suraj Reddy**

Project Designer

## Measure S

**Planned library Improvements in Capitola and Live Oak – part of the 10-branch Santa Cruz Public Libraries system**



### Capitola



### Live Oak



- |  |   |
|--|---|
|  Replace inadequate, cramped, temporary facilities with a modern, permanent library                              |  Create flexible program spaces for library and community activities   |
|  Provide safe space for teens after school, including area for homework and tutoring                             |  Improve and upgrade teen area – a safe place for after-school uses including dedicated space for homework and tutoring              |
|  Provide space for wide range of community programs serving seniors, children and community members of all ages |  Improve areas for young children's programs like story time, early childhood reading and computer access                           |
|  Community input on design process and features  |  Partner with Live Oak School District, Boys and Girls Club and the County to establish a library annex at Shoreline Middle School |

## Improving the Live Oak Branch

- Create flexible program spaces for library and community activities
- Improve and upgrade teen area – a safe place for after-school uses included dedicated space for homework and tutoring
- Improve areas for young children's programs like story time, early childhood reading and computer access
- Partner with Live Oak School District, Boys and Girls Club and the County to establish a library annex at Shoreline Middle School



# Measure S | Live Oak Library | Annex Goals | Finding a Place

## Programs offered at the Live Oak Branch:

<b>Live Oak Library Book Group</b>	<b>ESL Conversation Group</b>
<b>Toddler Story Time</b>	<b>Live Oak Knitters</b>
<b>Preschool Story Time, Spanish Story Time (Cuentame un Cuento)</b>	<b>Do-It Yourself Crafts</b>
<b>Family Lagoon Watch</b>	<b>Tales to Tails</b>
<b>Code Combat</b>	<b>Homework Help</b>



## Limitations at existing Live Oak Branch:

- **Limited parking**
- **No separate programming space - sound travels throughout library and disturbs patrons.**
- **Teen room is often unavailable to teens, as it is used for all programs offered.**
- **No spaces suited to collaborative work.**



# Measure S | Live Oak Library | Annex Goals | Finding a Place

## Programs offered by Parks, Open Space & Cultural Services:

<b>Art, Science, and Nature Day Camps</b>	<b>Kinder Enrichment Programs</b>
<b>Winter, Spring, and Summer Camps</b>	<b>Capitola Mall Walking Program</b>
<b>Zombie Camp (for teens)</b>	<b>Senior Strength and Training Class</b>
<b>Kreative Kids Programs</b>	<b>Senior and Adult Trips</b>
<b>After School Childhood Enrichment Programs</b>	<b>Community Classes</b>

## Limitations at existing Community Center:

- Great hall used for child care
- No smaller rooms available for trainings and classes
- No collaborative indoor spaces
- Limited indoor recreational opportunities
- Commercial kitchen under utilized





# Measure S | Live Oak Library Annex Goals

## Vision Statement: Provide multi-use learning spaces accessible to all

### Santa Cruz Public Libraries – Live Oak Annex Project Goals

Create a **learning environment** which serves **all ages** and provides **gathering spaces** which encourage **intergenerational activities**

Provide **learning facilities** not available at the Existing Live Oak Library branch that are **free to the public**

Locate the facility in a **central location** accessible to the Live Oak Community

Design the facility to **function in partnership** with other community organizations maximizing the opportunities for **collaborative and engaging programming** as well as providing the **most efficient use of resources and personnel**

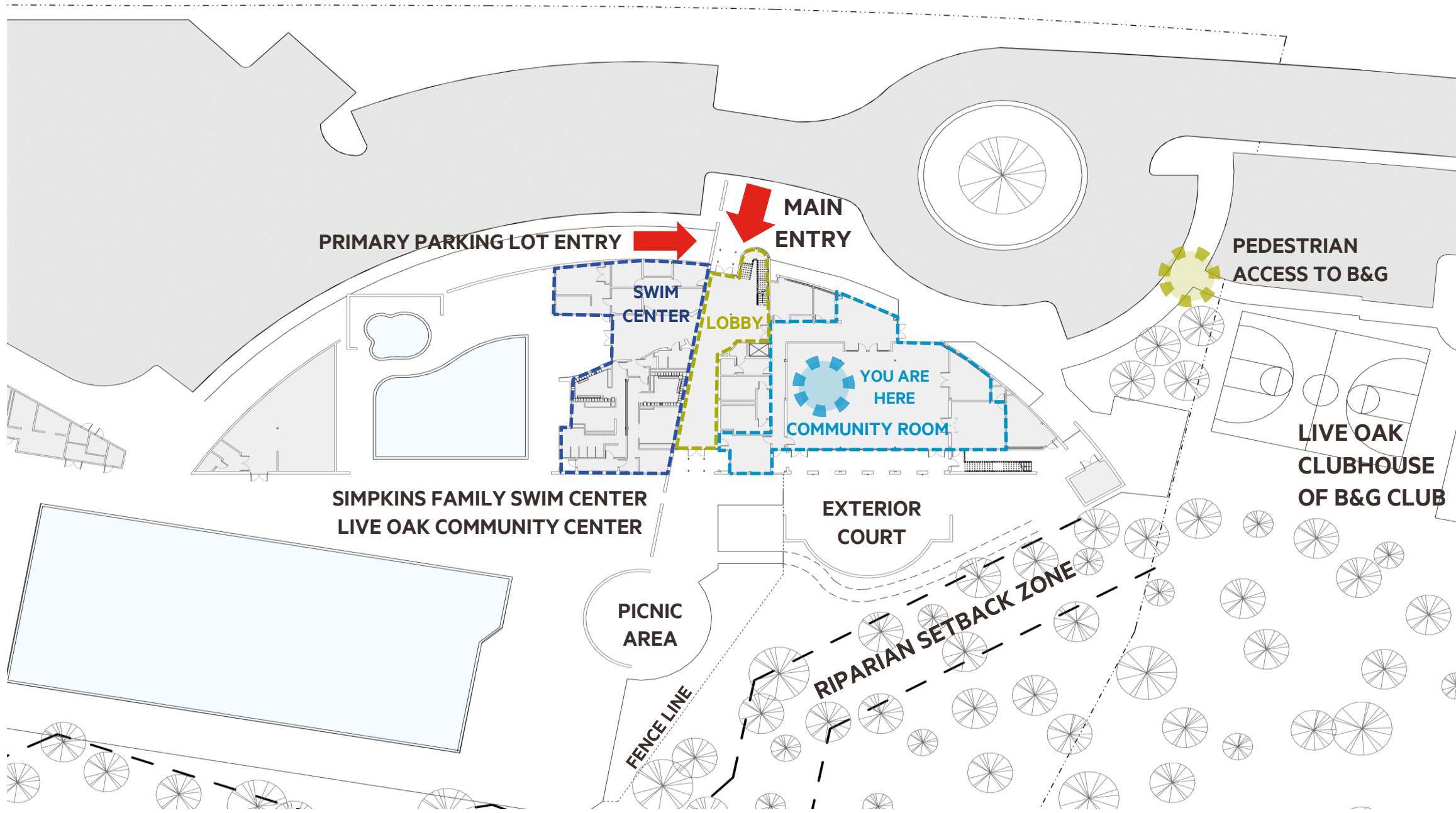
**Leverage past investment** in existing community institutions



# **Community Meeting #2 Report:**

## **Meeting Comments / Voting**

## **Programmatic Preferences**



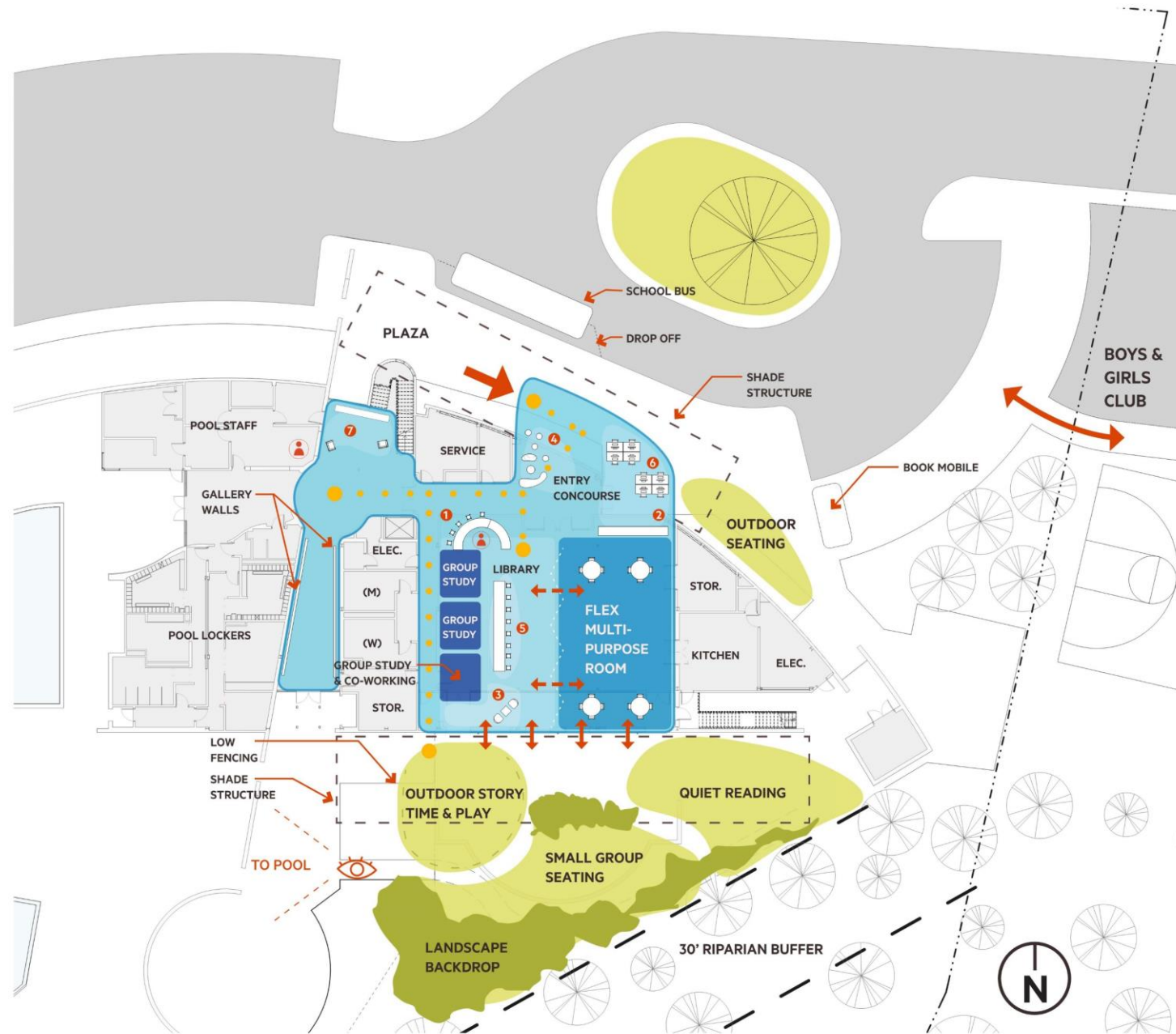
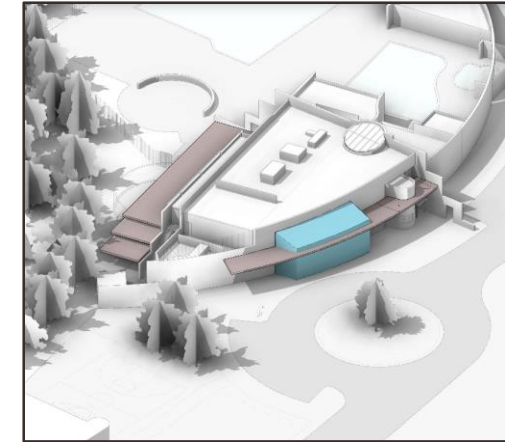
LIVE OAK LIBRARY ANNEX PROJECT SITE & EXISTING FACILITY

Live Oak Annex Background



# Option A

EXISTING CENTER RENOVATED TO  
LIBRARY AND FLEXIBLE PROGRAM  
ROOM WITH NEW ENTRY



LIVE OAK LIBRARY ANNEX PROJECT COUNTY OF SANTA CRUZ

CONCEPT DESIGN OPTION A

- 1 RECEPTION
- 2 BOOK LOCKERS
- 3 KIDS' CORNER
- 4 INTERIOR COMFORTABLE SEATING
- 5 LAPTOP BAR
- 6 PUBLIC COMPUTERS
- 7 FRIENDS STORE

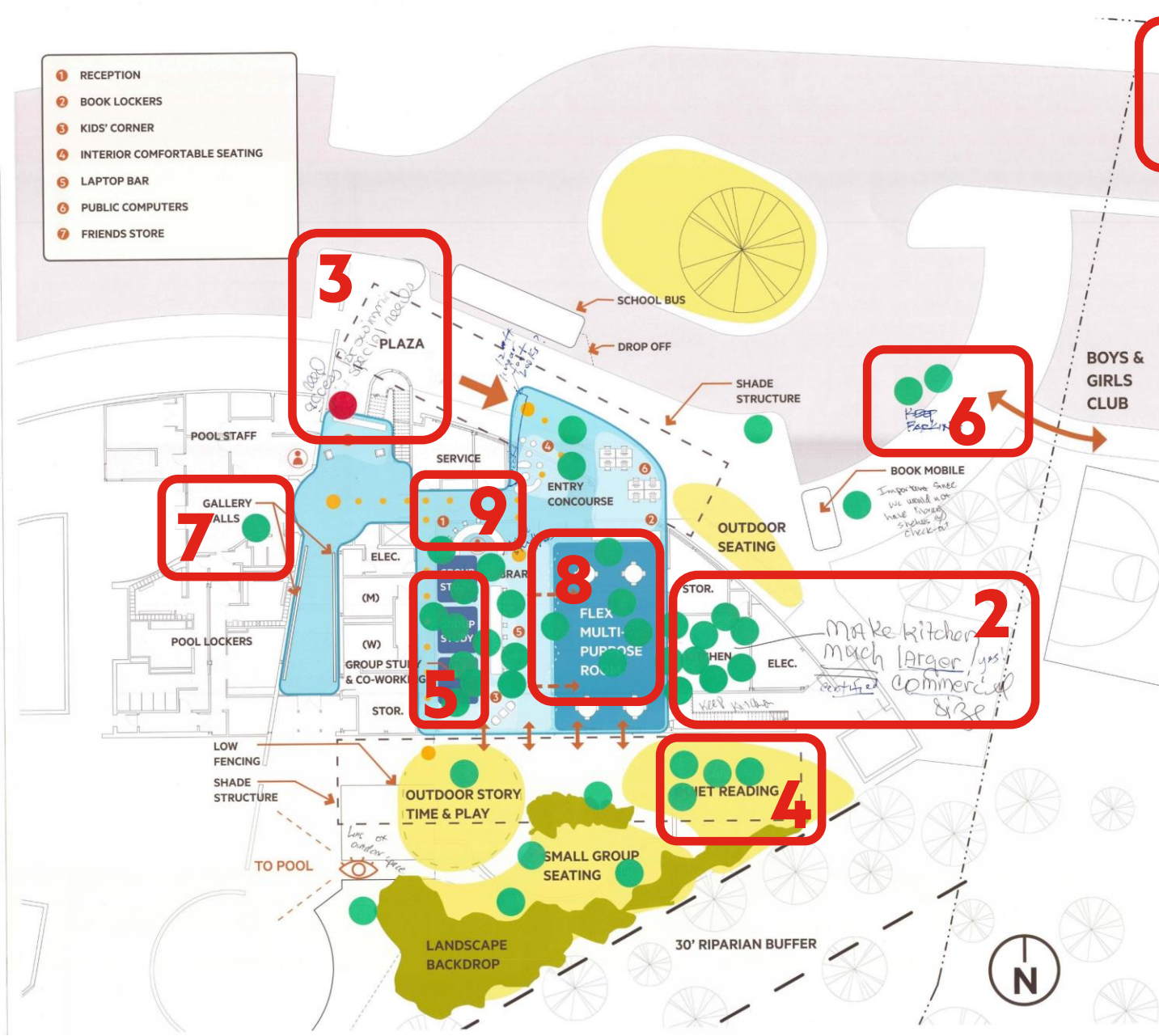
## OPTION A

EXISTING CENTER RENOVATED TO LIBRARY AND FLEXIBLE PROGRAM ROOM WITH NEW ENTRANCE

1

## SUMMARY

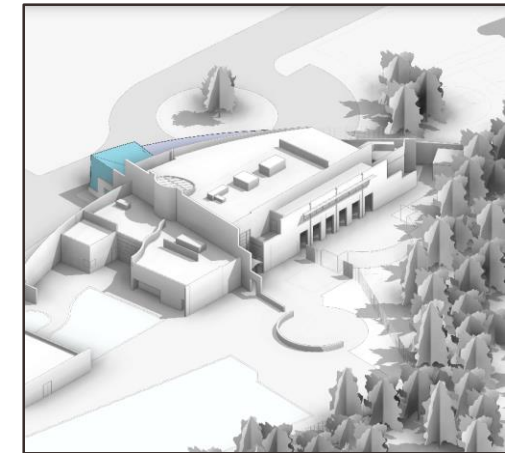
- 1 - STRONG OVERALL PREFERENCE FOR "A"
- 2 - MAINTAIN KITCHEN & ADD TEACHING AREA
- 3 - LOCATE ENTRY FOR CLEAR WAY FINDING
- 4 - QUIET READING INTERIOR / EXTERIOR
- 5 - GROUP STUDY / CO-WORKING SPACES
- 6 - MAINTAIN PARKING AT ENTRY
- 7 - PROVIDE GALLERY SPACE
- 8 - MULTI-PURPOSE ROOMS
- 9 - SUPERVISION OF ENTRIES AND LIBRARY



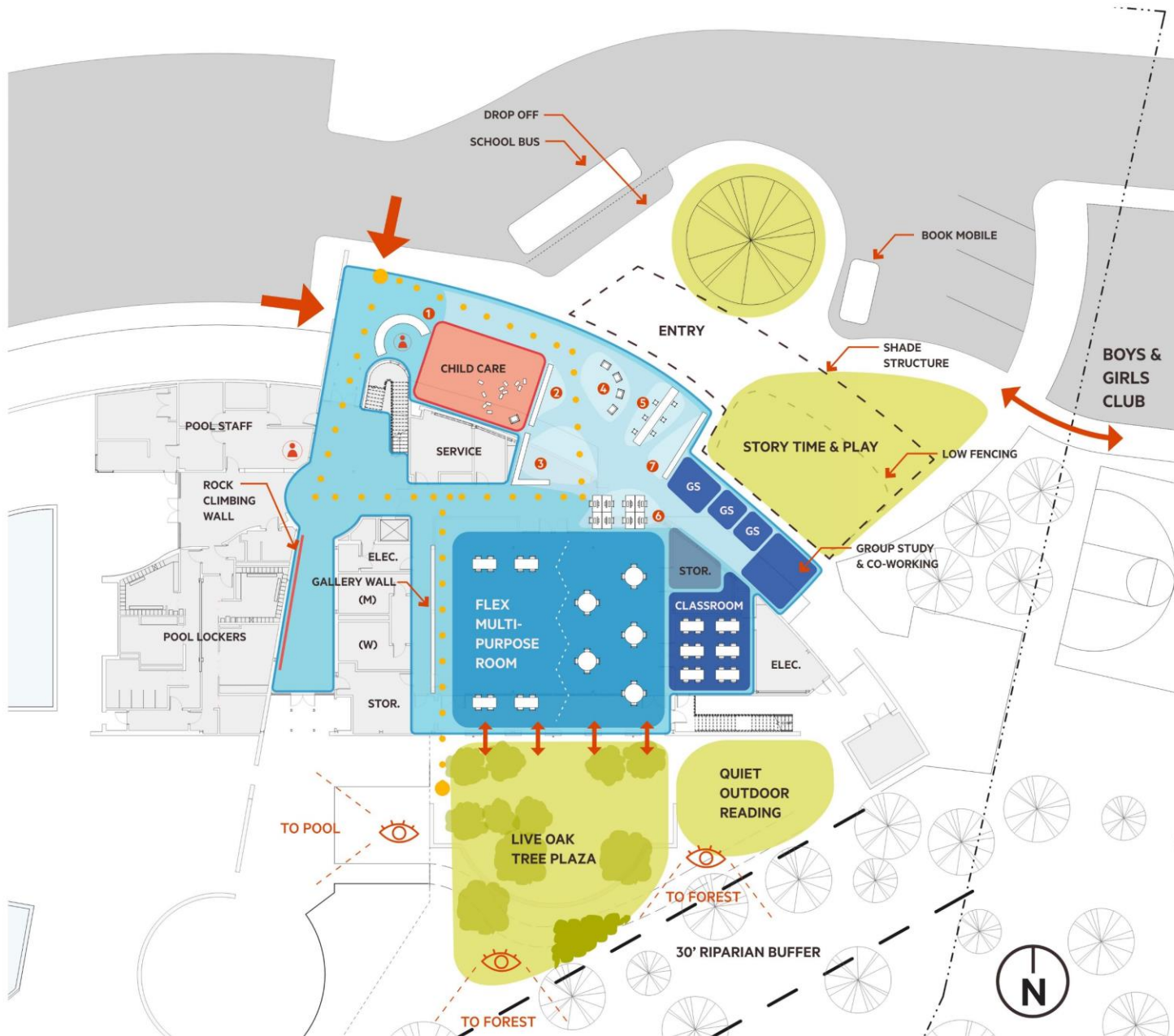


# Option B

LIBRARY ADDITION AT FRONT OF  
BUILDING AND EXPANDED  
ENTRANCE



CONCEPT DESIGN OPTION B



LIVE OAK LIBRARY ANNEX PROJECT COUNTY OF SANTA CRUZ



- 1 RECEPTION
- 2 BOOK LOCKERS
- 3 KIDS' CORNER
- 4 INTERIOR COMFORTABLE SEATING
- 5 LAPTOP BAR
- 6 PUBLIC COMPUTERS
- 7 FRIENDS STORE

OPTION B

10

LIBRARY ADDITION AT FRONT OF BUILDING AND EXPANDED ENTRANCE

SUMMARY

10 – OVERALL POOR PREFERENCE, NO KITCHEN IN FACILITY

11 – NO SUPERVISION OF LIBRARY AREA

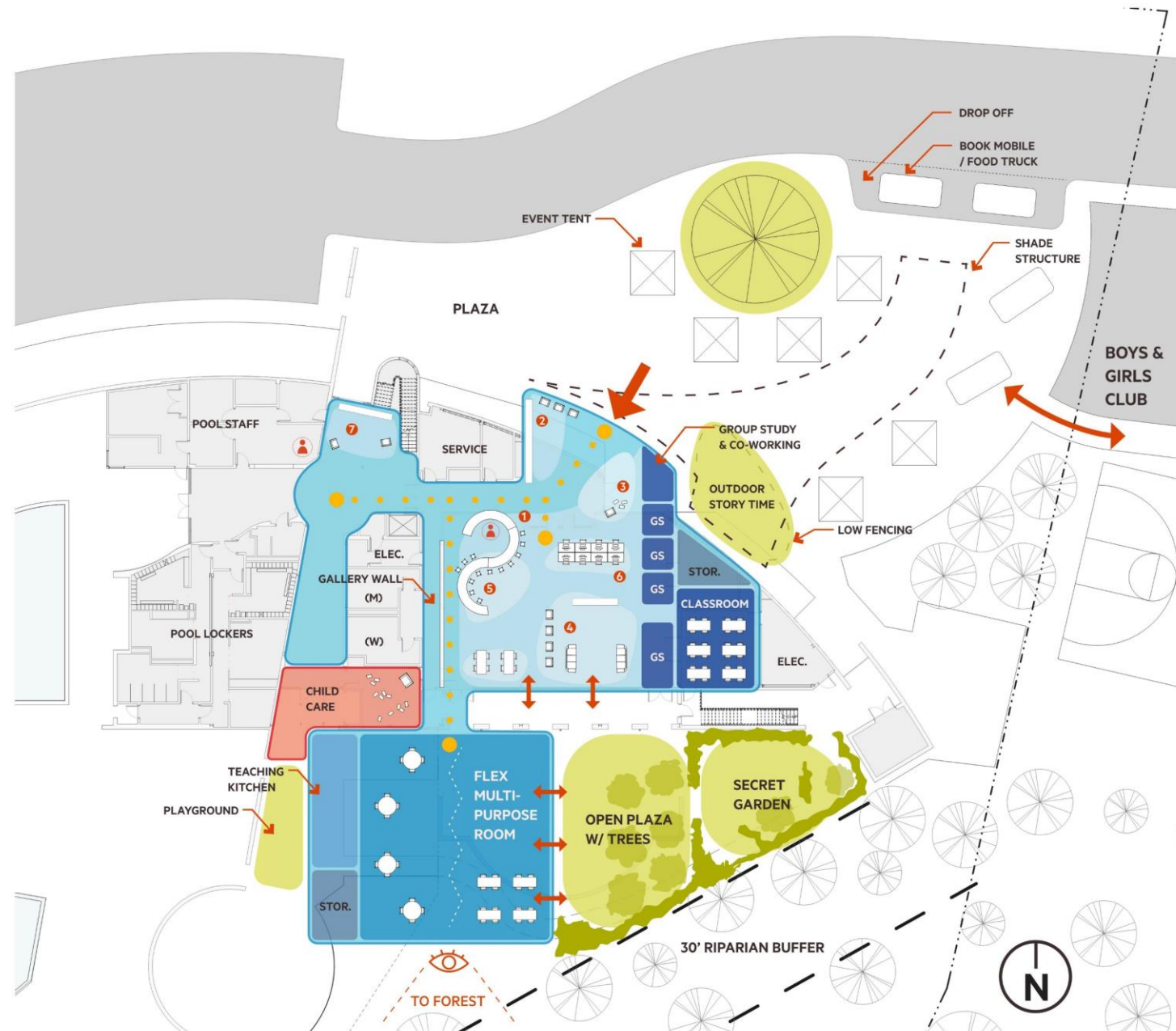
12 – FLOOR SUITABLE FOR DANCE, YOGA, CRAFTS

13 – BOOK MOBILE & PLAZA ACCESS



# Option C

## RENOVATED CENTER FOR LIBRARY AND EXPANDED FLEXIBLE PROGRAM ROOM



LIVE OAK LIBRARY ANNEX PROJECT COUNTY OF SANTA CRUZ

CONCEPT DESIGN OPTION C



- 1 RECEPTION
- 2 BOOK LOCKERS
- 3 KIDS' CORNER
- 4 INTERIOR COMFORTABLE SEATING
- 5 LAPTOP BAR
- 6 PUBLIC COMPUTERS
- 7 FRIENDS STORE

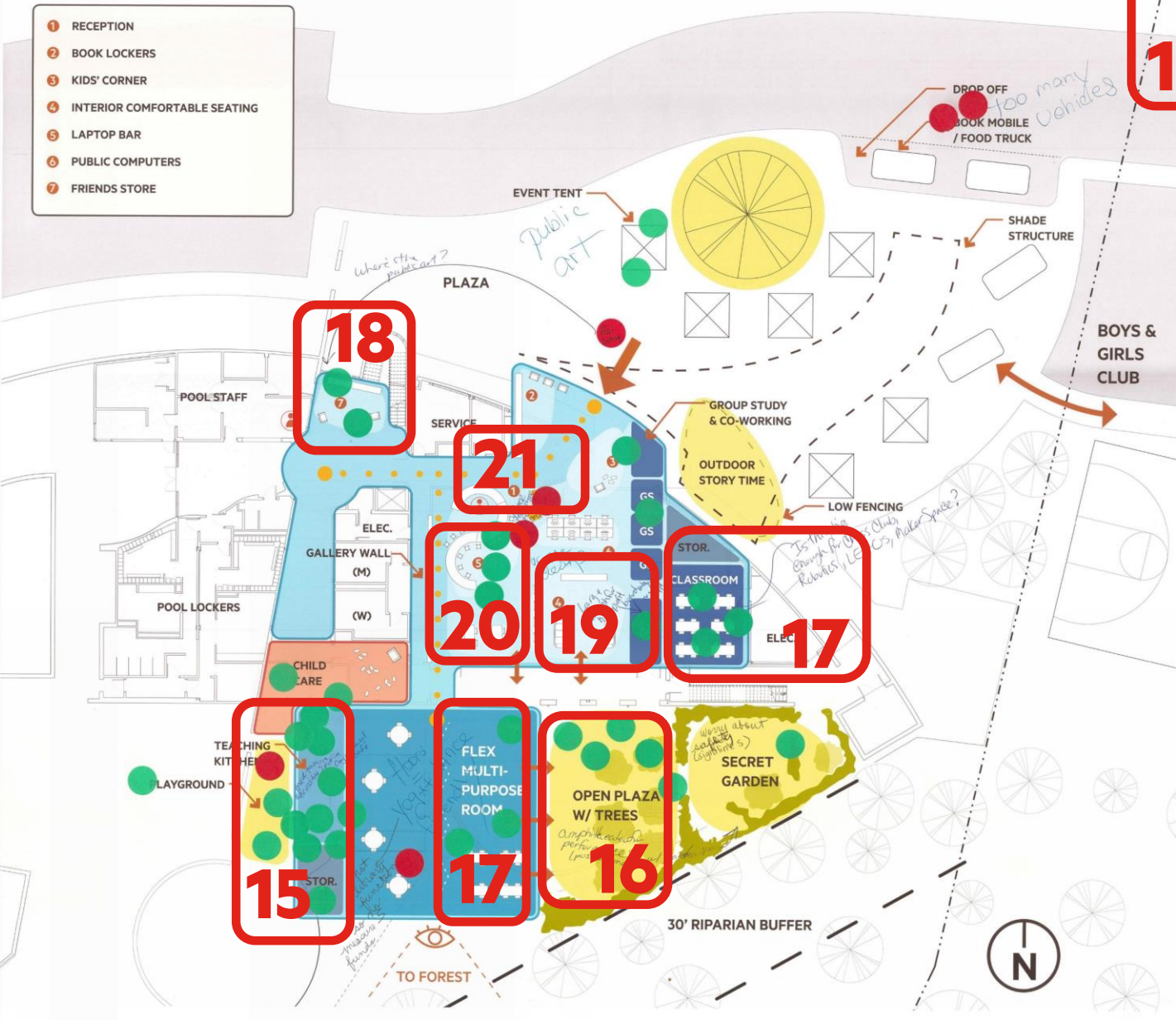
# OPTION C

14

RENOVATED CENTER FOR LIBRARY AND  
EXPANDED FLEXIBLE PROGRAM ROOM

## SUMMARY

- 14 – OVERALL MIXED PREFERENCE FOR CONCEPT
- 15 – KITCHEN FACILITY & TEACHING AREA
- 16 – OPEN OUTDOOR SPACE FOR FUNCTIONS
- 17 – CLASSROOM SPACE FOR VARIOUS PROGRAMS
- 18 – ENTRY PREFERENCE AT EXISTING LOCATION
- 19 – CONFERENCE ROOM SPACE FOR 20 PEOPLE
- 20 – LAPTOP BAR “GENIUS BAR”
- 21 – LACK OF STAFF/SUPERVISION AT LIBRARY





# LANDSCAPE CHARACTER:

## SUMMARY

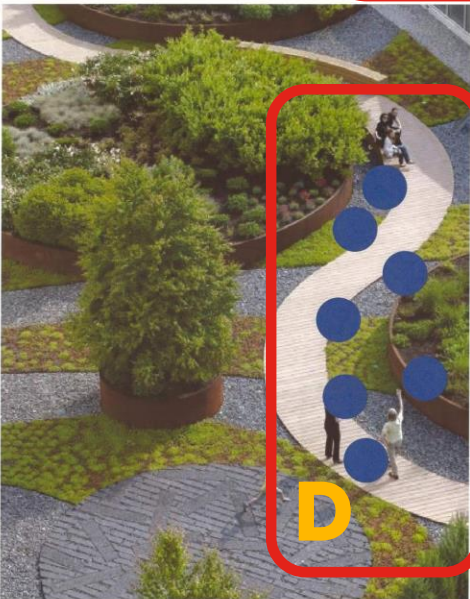
A – AMPHITHEATER

SEATING

B – GROUP SEATING

C – QUIET SEATING

D – SOFT PATHS



EBB & FLOW  
LIVE OAK LIBRARY ANNEX  
OCTOBER 22, 2018

JONI L. JANECKI  
& ASSOCIATES



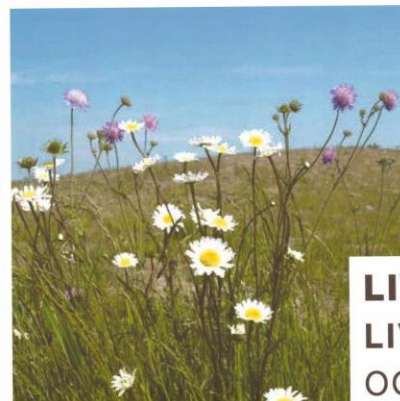
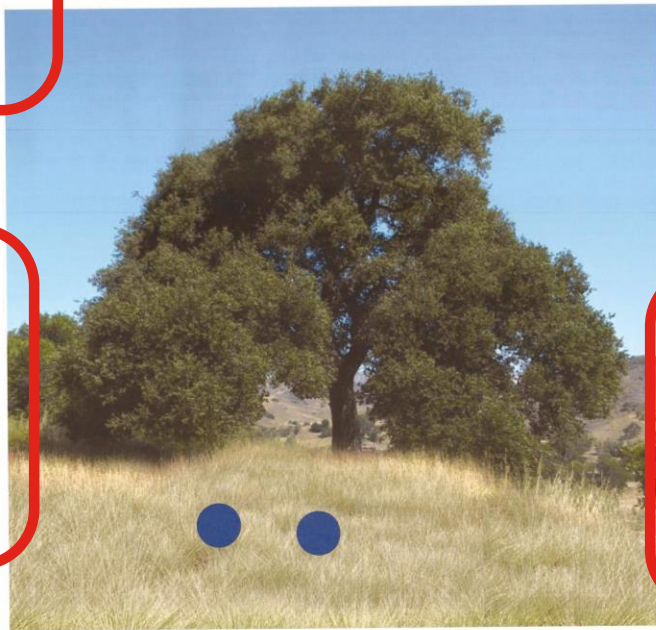
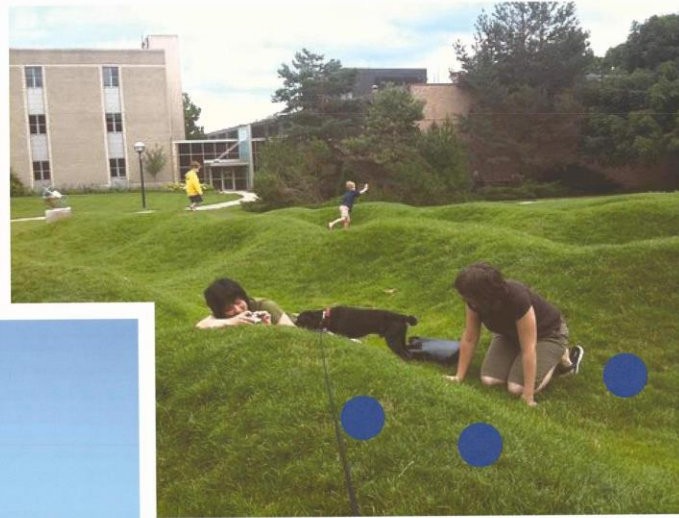
# LANDSCAPE CHARACTER:

## SUMMARY

E – CHILDREN'S GARDEN

F – CAFÉ TABLE SEATING

G – LANDSCAPE SEATING



**LIVE OAK SAVANNA**  
**LIVE OAK LIBRARY ANNEX**  
OCTOBER 22, 2018

JONI L. JANECKI  
& ASSOCIATES

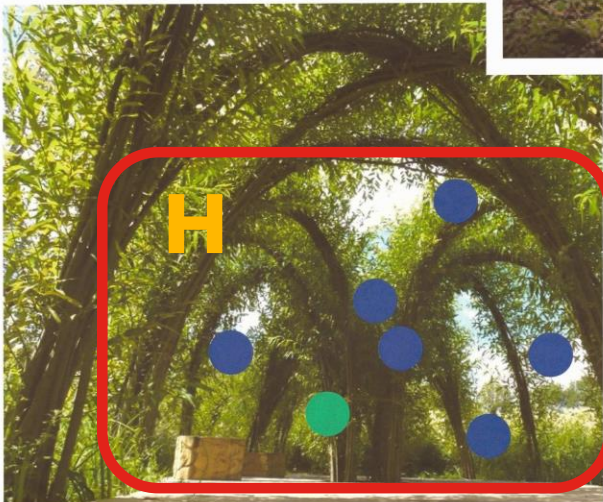


# LANDSCAPE CHARACTER:

## SUMMARY

H – SHADE COVER

I – BENCH SEATING

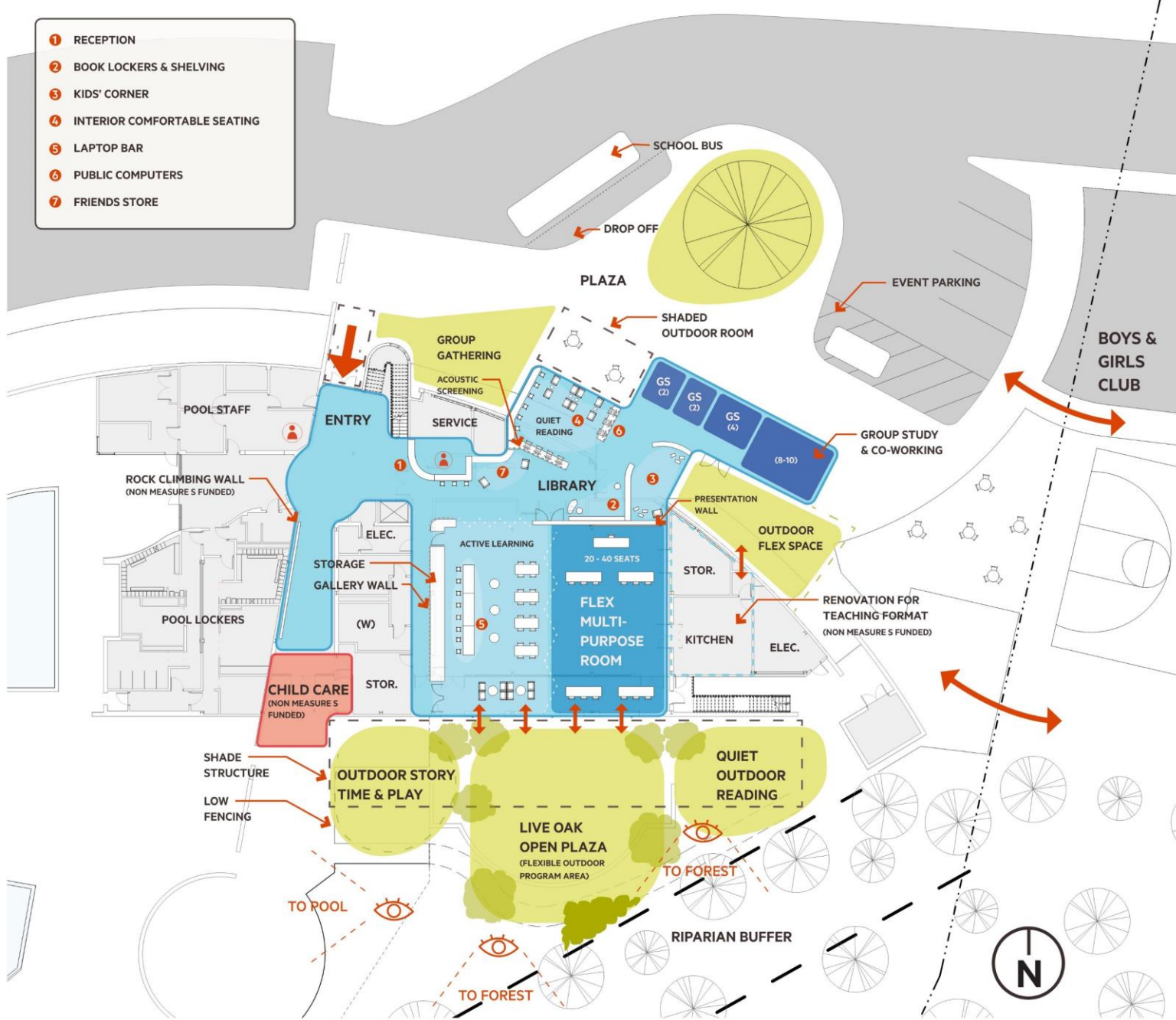


**SECRET GARDEN**  
**LIVE OAK LIBRARY ANNEX**  
OCTOBER 22, 2018

JONI L. JANECKI  
& ASSOCIATES



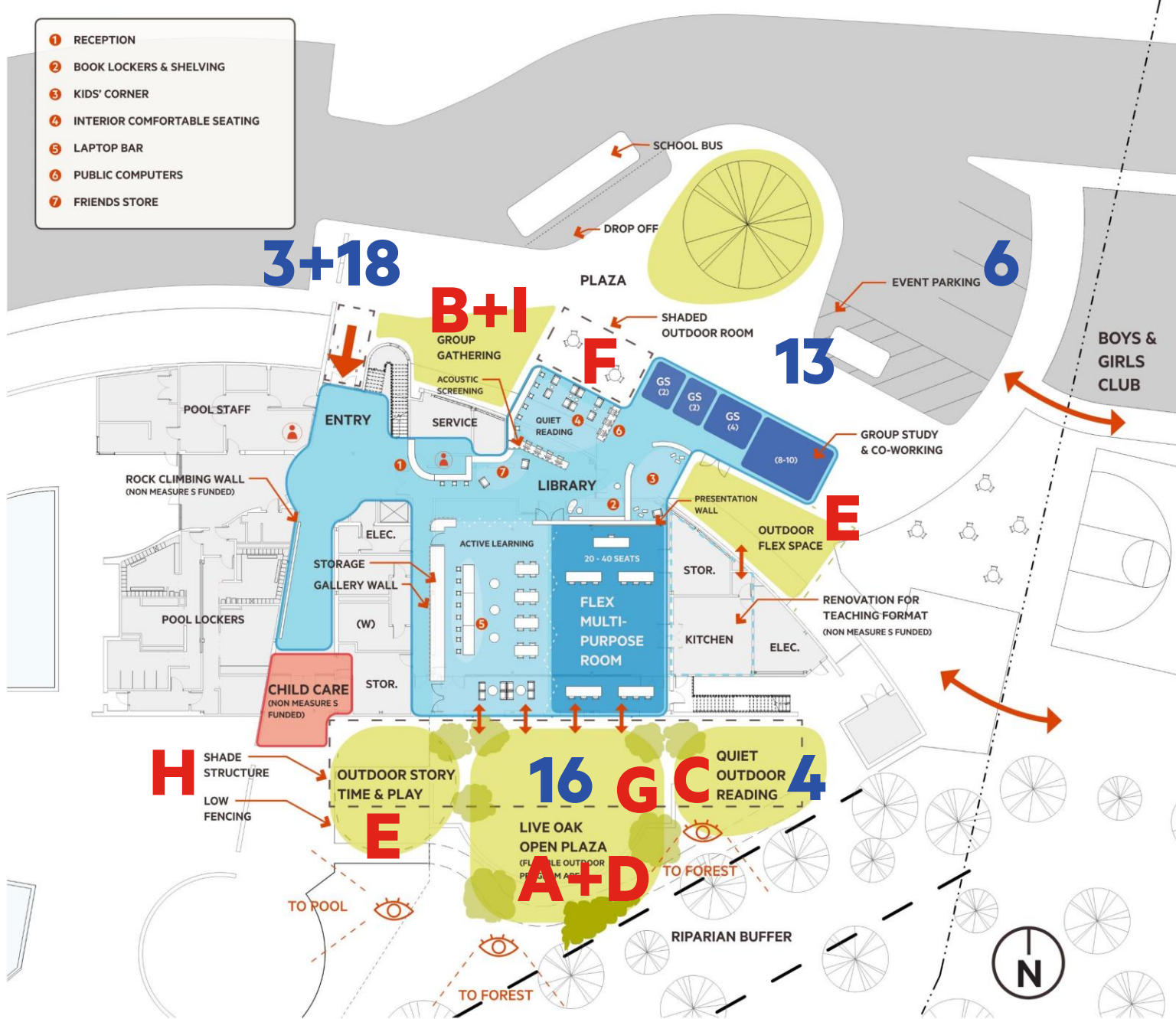
# Proposed Annex Concept Design



# PROPOSED CONCEPT DESIGN



- 1 RECEPTION
- 2 BOOK LOCKERS & SHELVING
- 3 KIDS' CORNER
- 4 INTERIOR COMFORTABLE SEATING
- 5 LAPTOP BAR
- 6 PUBLIC COMPUTERS
- 7 FRIENDS STORE



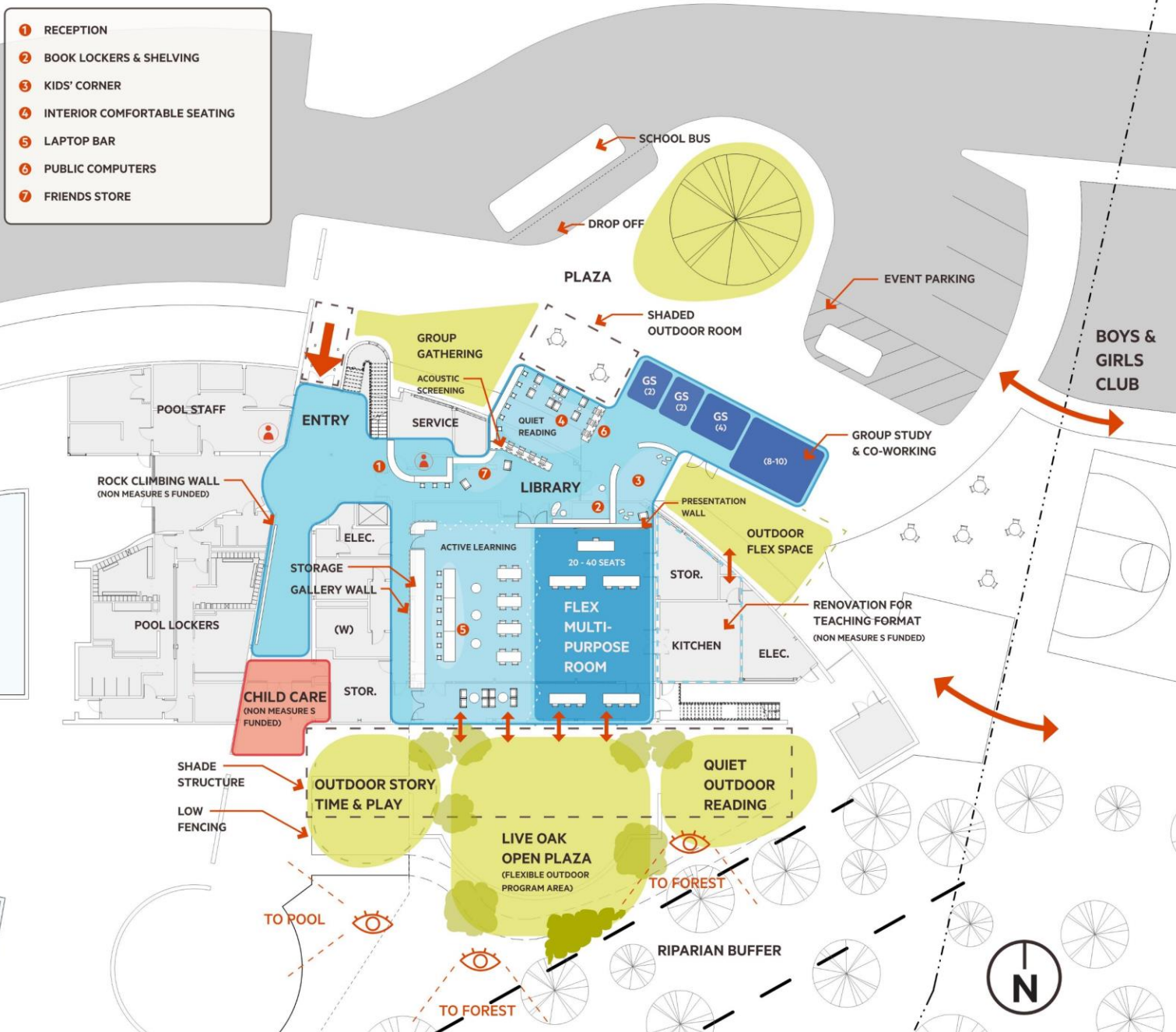
## PROPOSED CONCEPT DESIGN - EXTERIOR

- 3 – LOCATE ENTRY FOR CLEAR WAY FINDING
- 4 – QUIET READING INTERIOR / EXTERIOR
- 6 – MAINTAIN PARKING AT ENTRY
- 13 – EVENT PARKING & PLAZA ACCESS
- 16 – OPEN OUTDOOR SPACE FOR FUNCTIONS
- 18 – ENTRY PREFERENCE AT EXISTING LOCATION

- A – AMPHITHEATER SEATING
- B – GROUP SEATING
- C – QUIET SEATING
- D – SOFT PATHS
- E – CHILDREN'S GARDEN
- F – CAFÉ TABLE SEATING
- G – LANDSCAPE SEATING
- H – SHADE COVER
- I – BENCH SEATING







## PROPOSED CONCEPT DESIGN – EXTERIOR

### FLEXIBLE OUTDOOR PROGRAM AREA

- STORY TIME
- YOGA CLASS
- ENRICHMENT PROGRAMS
- SENIOR STRETCH CLASS
- CULTURAL FAIRS

- 1 RECEPTION
- 2 BOOK LOCKERS & SHELVING
- 3 KIDS' CORNER
- 4 INTERIOR COMFORTABLE SEATING
- 5 LAPTOP BAR
- 6 PUBLIC COMPUTERS
- 7 FRIENDS STORE





# PROPOSED CONCEPT DESIGN – INTERIOR

## FLEX MULTI-PURPOSE ROOM

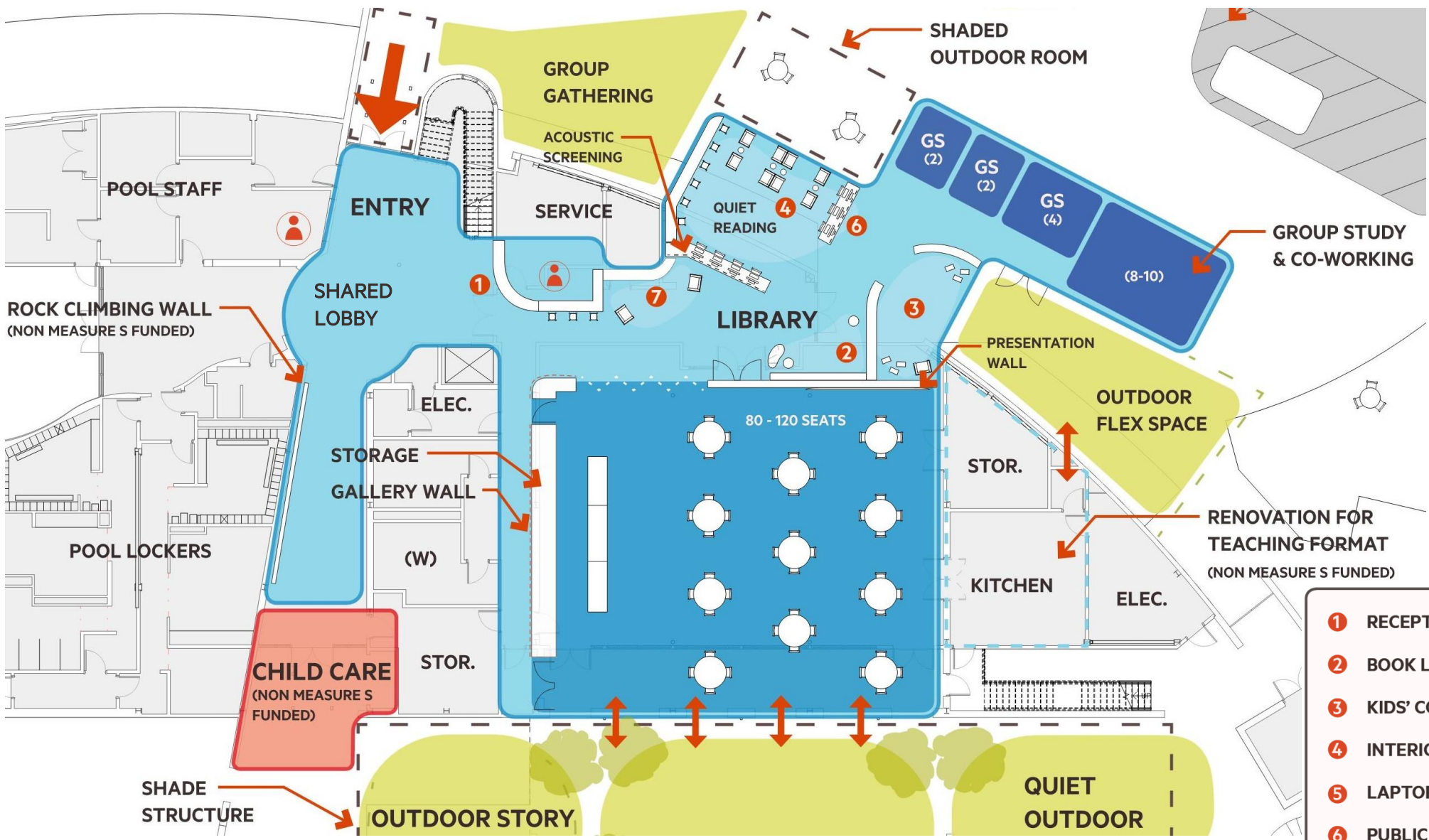
- CLASSROOM
- SMALL MEETING
- FITNESS CLASS
- SMALL EVENT
- TRAINING
- DANCE CLASS
- COOKING CLASS

## ACTIVE LEARNING SPACE

- WRITING GROUP
- MAKER SPACE
- CRAFT PROGRAMS
- SEWING CLASSES
- OPEN SEMINARS

- ① RECEPTION
- ② BOOK LOCKERS & SHELVING
- ③ KIDS' CORNER
- ④ INTERIOR COMFORTABLE SEATING
- ⑤ LAPTOP BAR
- ⑥ PUBLIC COMPUTERS
- ⑦ FRIENDS STORE

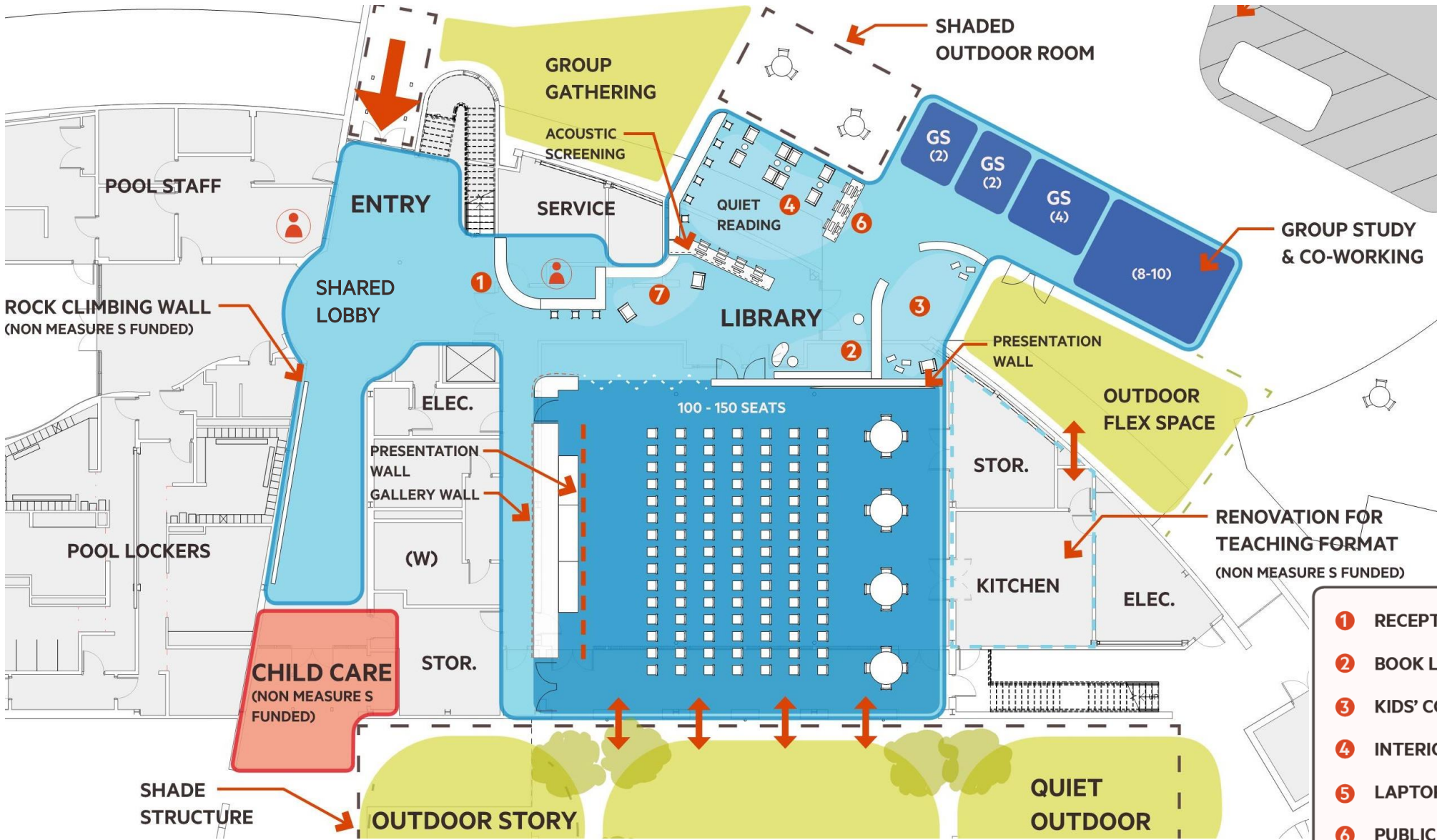




**PROPOSED  
CONCEPT DESIGN:**

- **COMMUNITY EVENT**
- **BANQUET**
- **VOTING PRECINCT**
- **ART SHOW**

- 1** RECEPTION
- 2** BOOK LOCKERS & SHELVING
- 3** KIDS' CORNER
- 4** INTERIOR COMFORTABLE SEATING
- 5** LAPTOP BAR
- 6** PUBLIC COMPUTERS
- 7** FRIENDS STORE



**PROPOSED  
CONCEPT DESIGN:**

- CONFERENCE
- LARGE GROUP TRAINING
- PERFORMANCE
- MOVIE NIGHT

- 1 RECEPTION
- 2 BOOK LOCKERS & SHELVING
- 3 KIDS' CORNER
- 4 INTERIOR COMFORTABLE SEATING
- 5 LAPTOP BAR
- 6 PUBLIC COMPUTERS
- 7 FRIENDS STORE



# Measure S | Live Oak Library Annex Goals

## Vision Statement: Provide multi-use learning spaces accessible to all

### Santa Cruz Public Libraries – Live Oak Annex Project Goals

Create a **learning environment** which serves **all ages** and provides **gathering spaces** which encourage **intergenerational activities**

Provide **learning facilities** not available at the Existing Live Oak Library branch that are **free to the public**

Locate the facility in a **central location** accessible to the Live Oak Community

Design the facility to **function in partnership** with other community organizations maximizing the opportunities for **collaborative and engaging programming** as well as providing the **most efficient use of resources and personnel**

**Leverage past investment** in existing community institutions





# PLANNING FOR A PARTNERSHIP

## SANTA CRUZ PUBLIC LIBRARIES & SANTA CRUZ PARKS AND OPEN SPACE

MASTER SCHEDULE: LIBRARY PROGRAMS & SIMPKINS CENTER PROGRAMS

EVENT SCHEDULE: YEARLY COMMUNITY EVENTS & SCHOOL CALENDAR

PARKING DEMAND: COORDINATED SCHEDULE FOR JOINT USE,  
INCLUDING SEASONAL DEMAND

FACILITY SUPPORT: BUILDING MAINTENANCE, SERVICES & UTILITIES

STAFFING: SCHEDULE & PROGRAMMING SUPPORT

POLICIES & RULES: LIBRARY PATRON USE & SIMPKINS CENTER USE

# PLANNING A PROJECT - NEXT STEPS

## SANTA CRUZ COUNTY

PROJECT SCOPE PROPOSAL: RENOVATION & NEW CONSTRUCTION

ESTIMATED PROJECT COST: CONSTRUCTION & PROJECT DESIGN

IMPLEMENTATION PLAN: LIBRARY PARKS MOU, COST SHARE  
PROJECT SCHEDULE & PHASING PLAN

SPRING 2019: PROJECT RECOMMENDATION TO GO BEFORE  
SANTA CRUZ COUNTY BOARD OF SUPERVISORS

# Community Meeting #3: Discussion

## Discussion & Questions:

- **COMMENT CARDS**
- **ONLINE RESOURCES**

To review this presentation or for  
access to previous presentations:

[www.scparks.com](http://www.scparks.com)

Check out links:

**Santa Cruz Public Libraries:**

<https://www.santacruzpl.org/>

**Parks, Open Space & Cultural  
Services for the County of  
Santa Cruz:**

<http://www.scparks.com/>