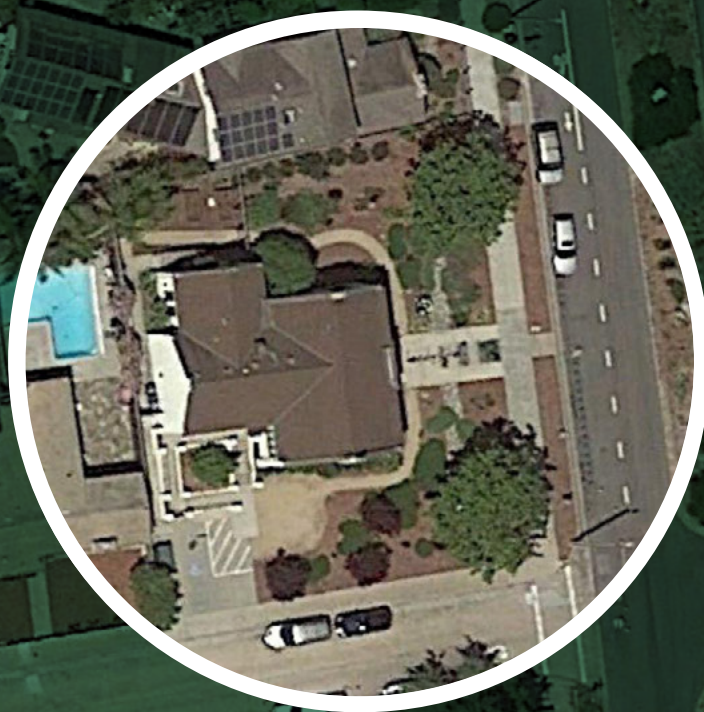


JAYSON
ARCHITECTURE



Community Meeting for the

GARFIELD PARK LIBRARY

MAY 15TH, 2019



**The City
of Santa Cruz**



**Santa Cruz
Public Libraries**



**Bogard
Construction, Inc**

Mark Dettle

Director of Public Works

Department of Public Works

Susan Nemitz

Director

Santa Cruz Public Libraries

Kimberly Owen

**Project Manager on behalf of
the City of Santa Cruz**

LEED Accredited Professional, BD+C

Jessica Goodman

Regional Manager

Santa Cruz Public Libraries

Catherine Workman

Branch Manager

Santa Cruz Public Libraries

PROJECT TEAM

**COMMUNITY MEETING FOR THE
GARFIELD PARK LIBRARY**

JAYSON
ARCHITECTURE



ABRAHAM JAYSON

Principal, Jayson Architecture

Architect, LEED Accredited Professional, BD+C



KATIE STUART

Project Manager, Jayson Architecture

Architect, LEED Accredited Professional, BD+C

PRESENTERS

COMMUNITY MEETING FOR THE
GARFIELD PARK LIBRARY

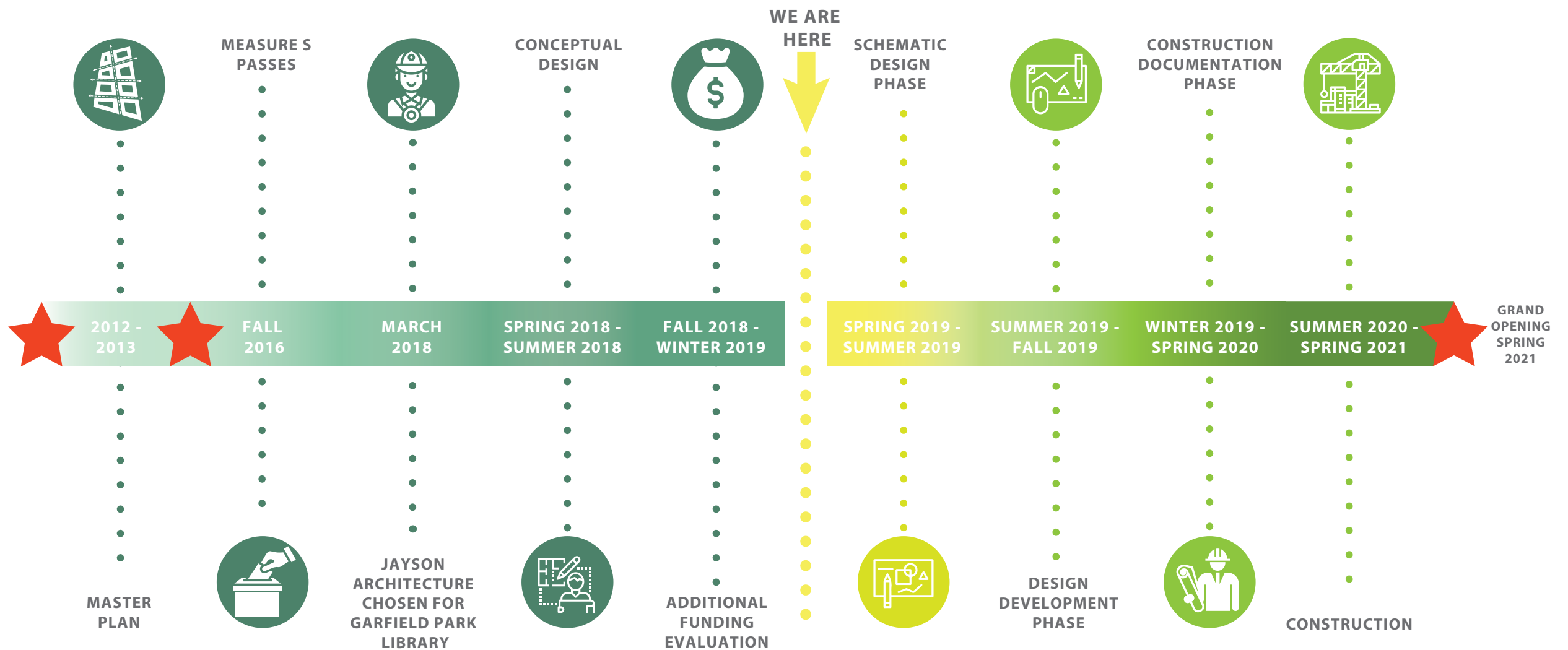
JAYSON
ARCHITECTURE



**In June 2016, voters approved Measure S:
a \$67 million bond for facilities work throughout
the Santa Cruz Public Library system**

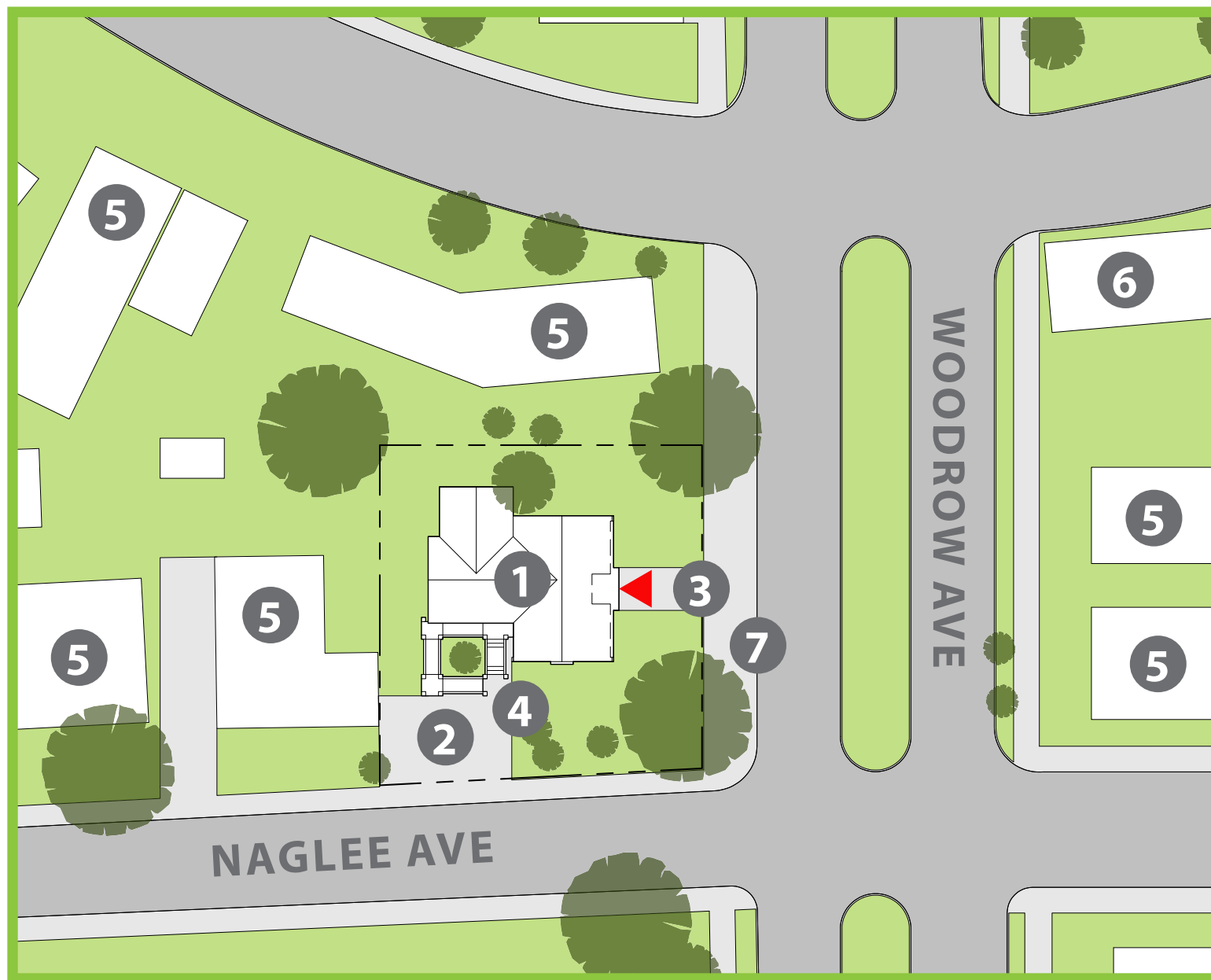
Garfield Park Budget: \$1,550,000

**Funds obtained through this measure will help
improve the existing space to support programs
for community members of all ages**



TIMELINE

NEEDS ASSESSMENT



- ① LIBRARY
- ② PARKING
- ③ MAIN ENTRY
- ④ ACCESSIBLE ENTRY
- ⑤ RESIDENTIAL
- ⑥ CHURCH
- ⑦ JUMP BIKES

SITE PLAN

COMMUNITY MEETING FOR THE
GARFIELD PARK LIBRARY

JAYSON
ARCHITECTURE



- 1 MAIN ENTRY
- 2 ADULT
- 3 CHILDREN
- 4 PUBLIC
- 5 COMPUTERS
- 6 CHILDREN'S PROGRAMMING
- 7 STAFF
- 8 MEETING ROOM
- 9 RESTROOM

EXISTING FLOOR PLAN

COMMUNITY MEETING FOR THE
GARFIELD PARK LIBRARY

JAYSON
ARCHITECTURE



LIGHTING



FURNITURE



FIRE PLACE



CHILDREN'S AREA



FLOORING



STACKS



CIRC DESK



COVERED WINDOWS

FEATURES TO IMPROVE

COMMUNITY MEETING FOR THE
GARFIELD PARK LIBRARY

JAYSON
ARCHITECTURE



BUILDING EXTERIOR



WINDOW MULLIONS



CURVED MOLDING



SKYLIGHT

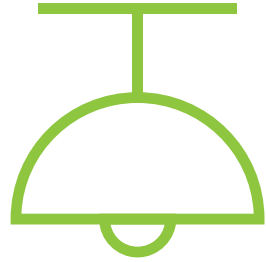


CHARMING DETAILS

FEATURES TO PRESERVE / RESTORE

COMMUNITY MEETING FOR THE
GARFIELD PARK LIBRARY

JAYSON
ARCHITECTURE



LIGHTING



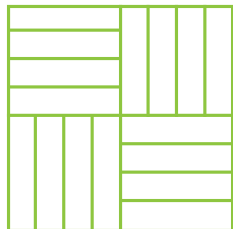
PAINT



ELECTRICAL



AV/TECH



FLOORING



WINDOWS

An aerial photograph of a suburban neighborhood, showing a grid of streets, houses with dark roofs, and green trees. The image is overlaid with a dark, semi-transparent filter. In the top right corner, the text 'JAYSON ARCHITECTURE' is visible. In the bottom left corner, the word 'HISTORY' is written in large, white, bold letters.

JAYSON
ARCHITECTURE

HISTORY

July, 1915: Library opens, the second Carnegie Library in Santa Cruz

Built with a grant of \$3,000, given by the Carnegie Corporation

April, 1992: Library is listed to the National Register of Historic Places

**July 28, 1999: Library is designated as a Landmark
on the City Historic Building Survey**



HISTORY

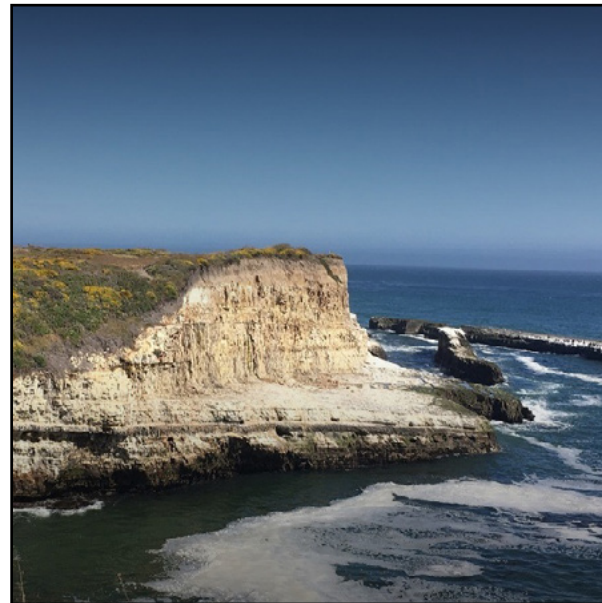
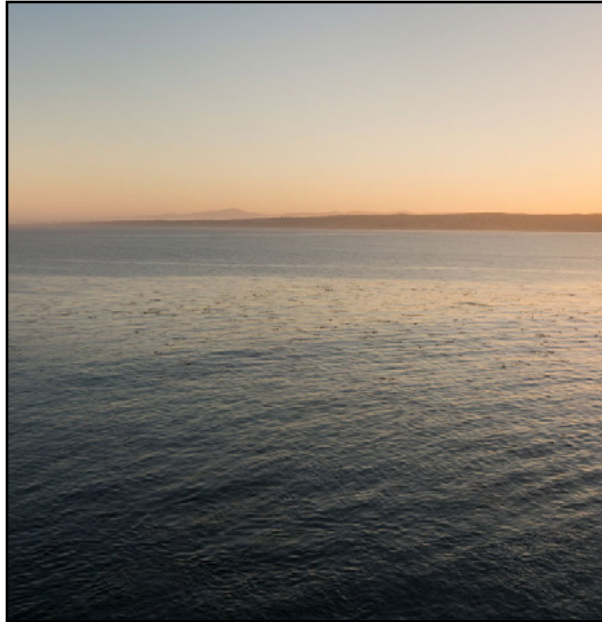
COMMUNITY MEETING FOR THE
GARFIELD PARK LIBRARY

JAYSON
ARCHITECTURE

An aerial photograph of a suburban neighborhood, showing a grid of streets, houses with dark roofs, and green trees. The image is overlaid with a dark, semi-transparent filter. In the top right corner, the text "JAYSON ARCHITECTURE" is visible. At the bottom, the text "INSPIRATION & MATERIALS" is prominently displayed in large, white, bold letters.

JAYSON
ARCHITECTURE

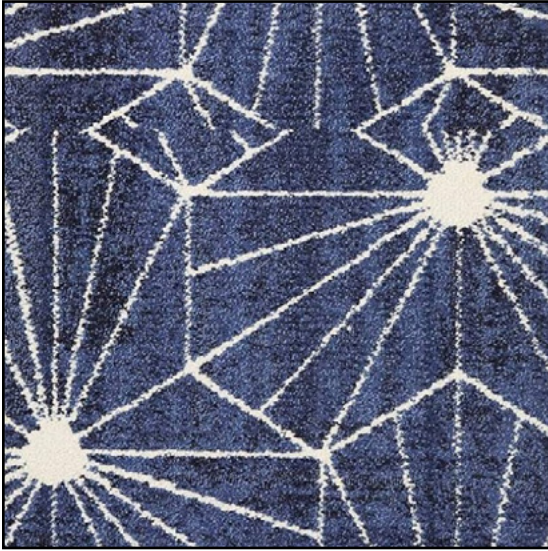
INSPIRATION & MATERIALS



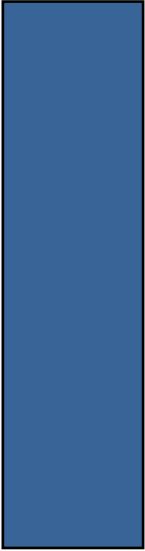
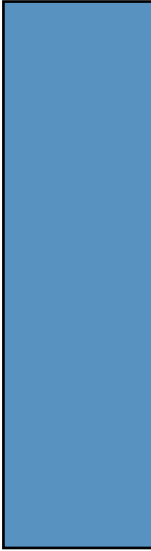
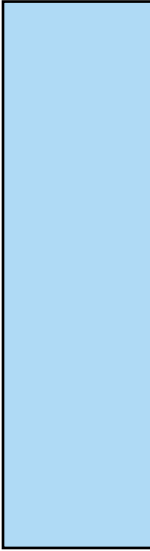
CONCEPTUAL INSPIRATION

COMMUNITY MEETING FOR THE
GARFIELD PARK LIBRARY

JAYSON
ARCHITECTURE



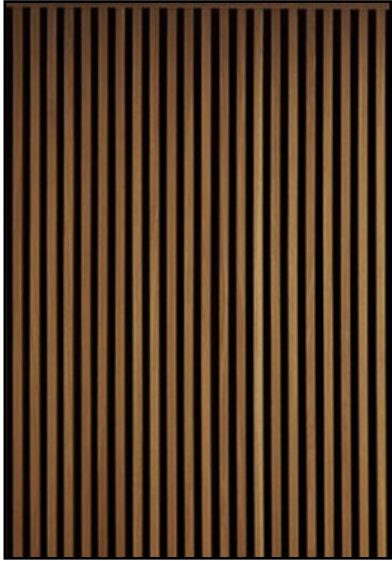
CARPET



COLOR ACCENTS



WOOD CABINETS



WOOD SLATS



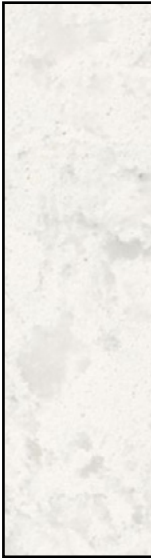
WOOD FLOOR



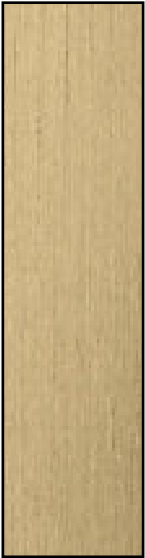
CARPET



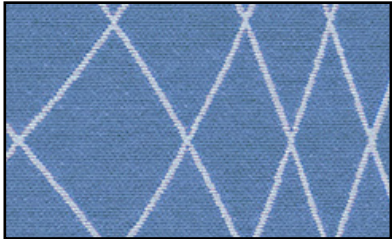
TILE



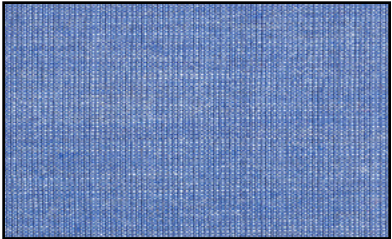
QUARTZ



BRASS



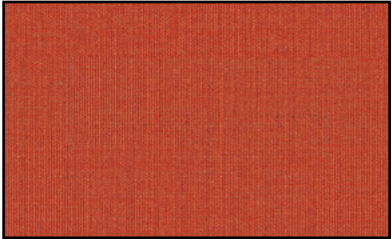
FABRIC



FABRIC

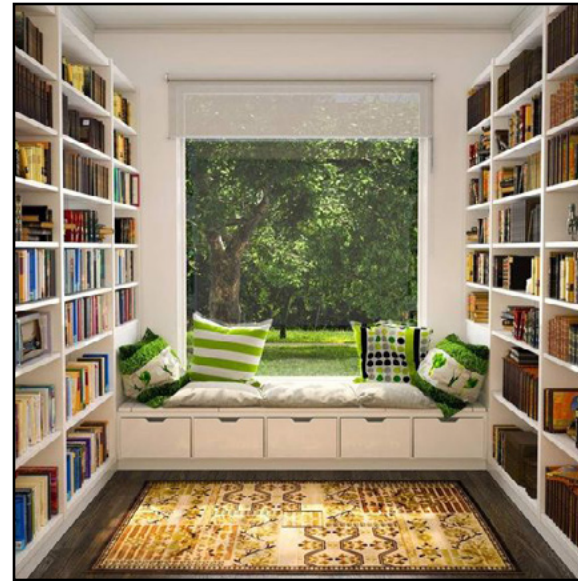
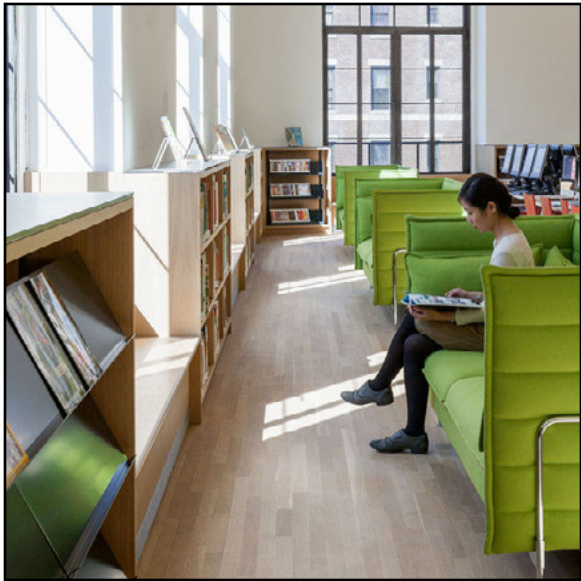
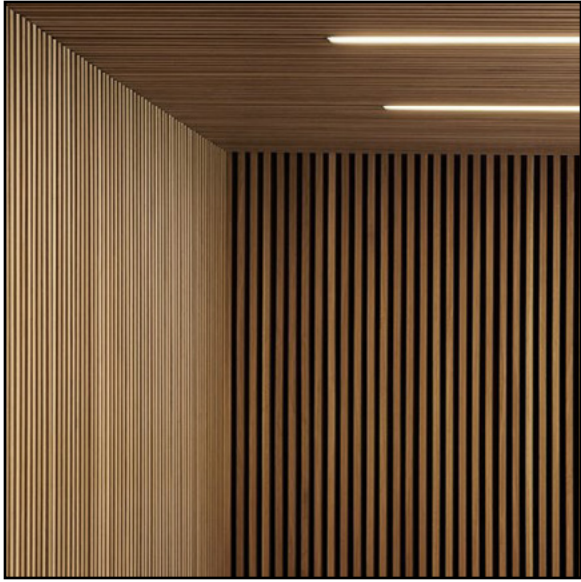


FABRIC



FABRIC

MATERIAL PALETTE



INTERIOR INSPIRATION

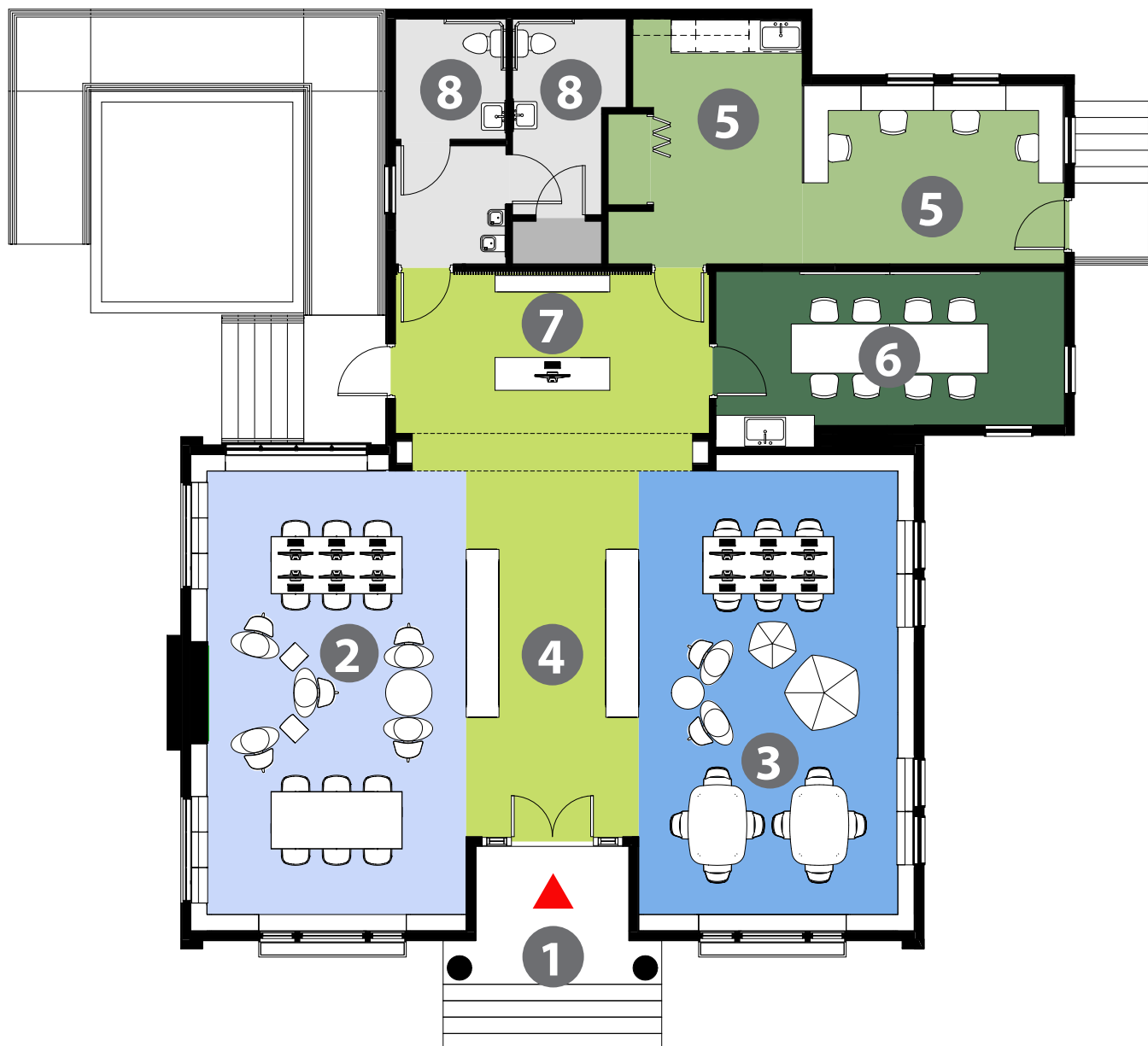
COMMUNITY MEETING FOR THE
GARFIELD PARK LIBRARY

JAYSON
ARCHITECTURE

An aerial photograph of a suburban neighborhood, showing a grid of streets with houses, trees, and parked cars. The image is overlaid with a dark, semi-transparent filter. In the top right corner, the text 'JAYSON ARCHITECTURE' is visible. In the bottom left corner, the text 'PROPOSED DESIGN' is prominently displayed in large, white, bold letters.

JAYSON
ARCHITECTURE

PROPOSED DESIGN



- ① MAIN ENTRY
- ② ADULT
- ③ CHILDREN
- ④ PUBLIC
- ⑤ STAFF
- ⑥ MEETING ROOM
- ⑦ INFO DESK
- ⑧ RESTROOM

FLOOR PLAN

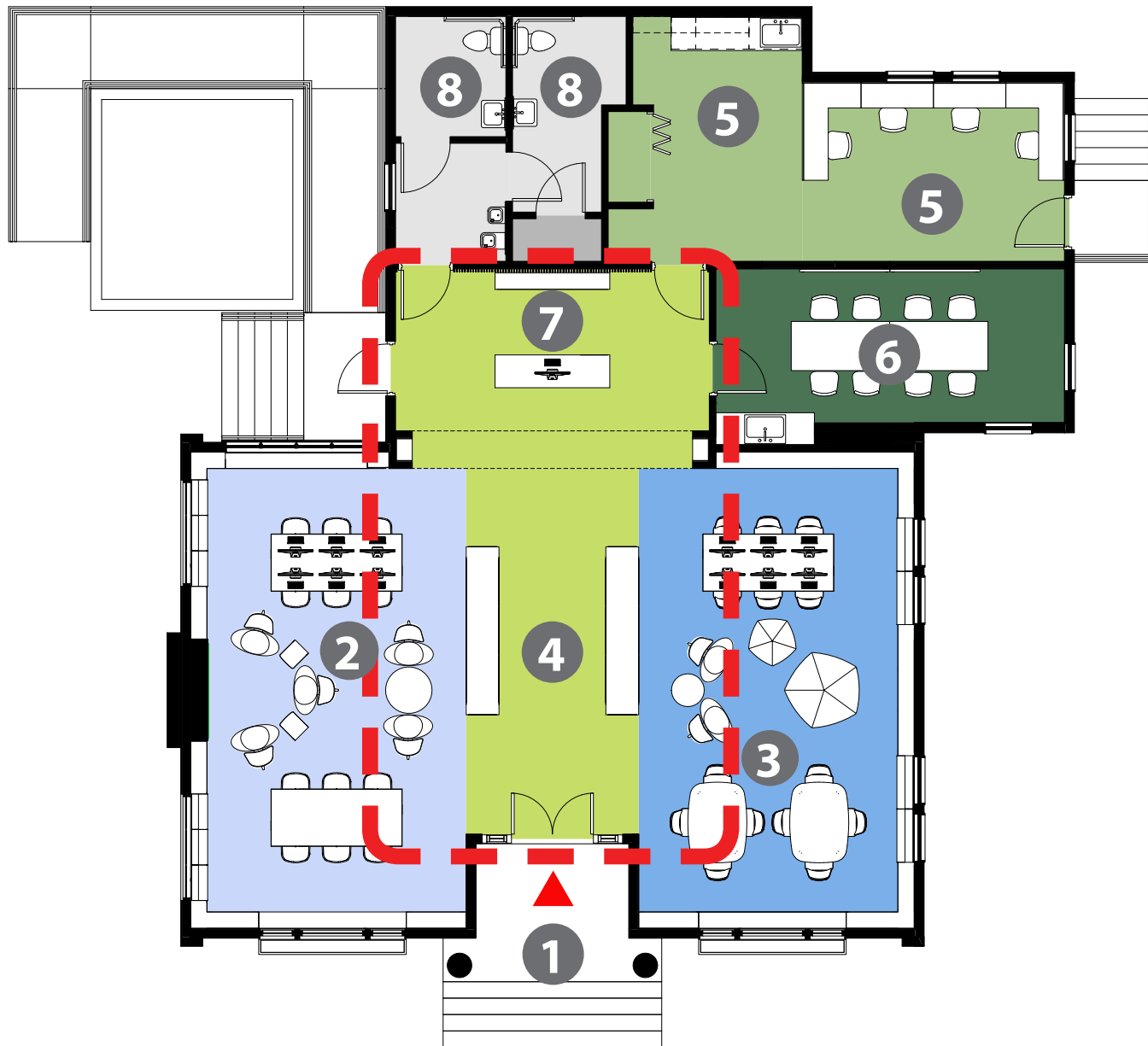
COMMUNITY MEETING FOR THE
GARFIELD PARK LIBRARY

JAYSON
ARCHITECTURE

An aerial photograph of a suburban neighborhood, showing a grid of streets, houses with dark roofs, and green trees. The image is overlaid with a dark, semi-transparent filter. In the top right corner, the text 'JAYSON ARCHITECTURE' is visible. In the bottom left corner, the word 'PUBLIC' is written in large, white, bold letters.

JAYSON
ARCHITECTURE

PUBLIC



- 1 MAIN ENTRY
- 2 ADULT
- 3 CHILDREN
- 4 PUBLIC
- 5 STAFF
- 6 MEETING ROOM
- 7 INFO DESK
- 8 RESTROOM



RENDERING - ENTRY TOWARDS CIRCULATION DESK

COMMUNITY MEETING FOR THE
GARFIELD PARK LIBRARY

JAYSON
ARCHITECTURE



RENDERING - CIRCULATION DESK TOWARDS ENTRY

COMMUNITY MEETING FOR THE
GARFIELD PARK LIBRARY

JAYSON
ARCHITECTURE



RENDERING - CIRCULATION DESK

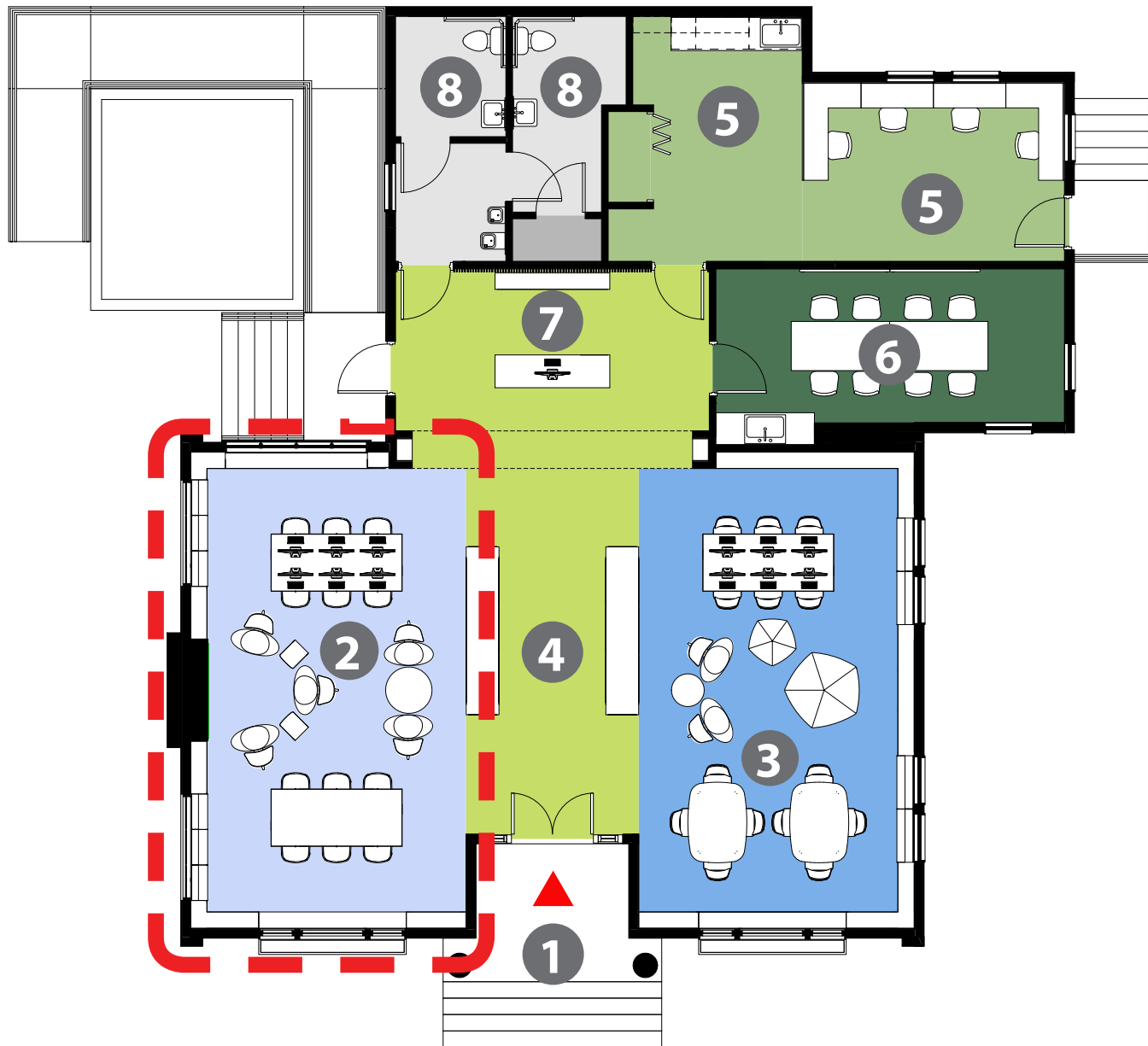
COMMUNITY MEETING FOR THE
GARFIELD PARK LIBRARY

JAYSON
ARCHITECTURE

An aerial photograph of a suburban neighborhood, showing a grid of streets, houses with dark roofs, and green trees. The image is overlaid with a dark, semi-transparent filter. In the top right corner, the text 'JAYSON ARCHITECTURE' is written in white. In the bottom left corner, the word 'ADULT' is written in large, bold, white capital letters.

JAYSON
ARCHITECTURE

ADULT



- ① MAIN ENTRY
- ② ADULT
- ③ CHILDREN
- ④ PUBLIC
- ⑤ STAFF
- ⑥ MEETING ROOM
- ⑦ INFO DESK
- ⑧ RESTROOM

FLOOR PLAN - ADULT

COMMUNITY MEETING FOR THE
GARFIELD PARK LIBRARY

JAYSON
ARCHITECTURE



RENDERING - ADULT'S READING AREA

COMMUNITY MEETING FOR THE
GARFIELD PARK LIBRARY

JAYSON
ARCHITECTURE



RENDERING - ADULT'S READING AREA

COMMUNITY MEETING FOR THE
GARFIELD PARK LIBRARY

JAYSON
ARCHITECTURE



RENDERING - ADULT'S READING AREA

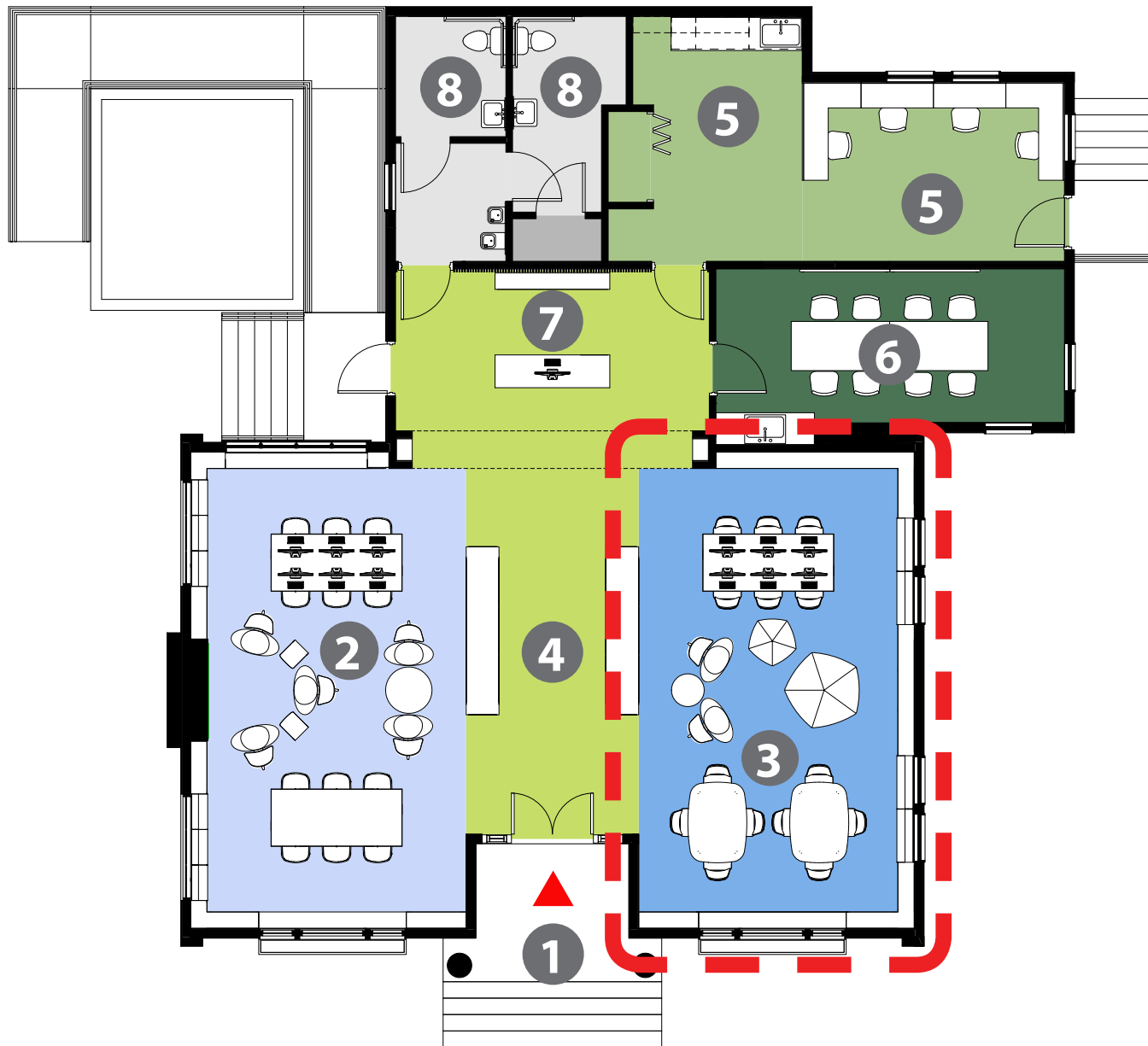
COMMUNITY MEETING FOR THE
GARFIELD PARK LIBRARY

JAYSON
ARCHITECTURE

An aerial photograph of a suburban neighborhood, showing a grid of streets, houses with dark roofs, and green trees. The image is overlaid with a dark, semi-transparent filter. In the top right corner, the text 'JAYSON ARCHITECTURE' is visible. In the bottom left corner, the word 'CHILDREN' is written in large, white, bold letters.

JAYSON
ARCHITECTURE

CHILDREN



- ① MAIN ENTRY
- ② ADULT
- ③ CHILDREN
- ④ PUBLIC
- ⑤ STAFF
- ⑥ MEETING ROOM
- ⑦ INFO DESK
- ⑧ RESTROOM



RENDERING - CHILDREN'S READING AREA

COMMUNITY MEETING FOR THE
GARFIELD PARK LIBRARY

JAYSON
ARCHITECTURE



RENDERING - CHILDREN'S READING AREA

COMMUNITY MEETING FOR THE
GARFIELD PARK LIBRARY

JAYSON
ARCHITECTURE

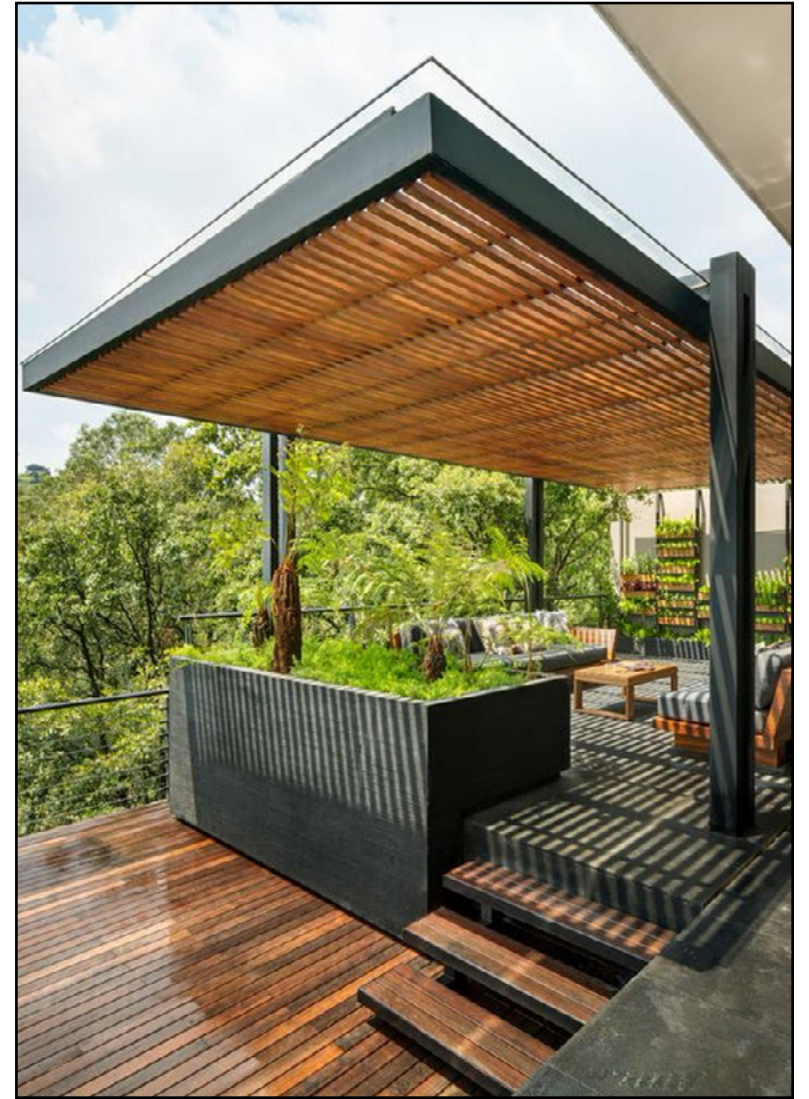


RENDERING -CHILDREN'S READING AREA

COMMUNITY MEETING FOR THE
GARFIELD PARK LIBRARY

JAYSON
ARCHITECTURE

ALTERNATE: EXTERIOR PATIO



PATIO INSPIRATION

COMMUNITY MEETING FOR THE
GARFIELD PARK LIBRARY

JAYSON
ARCHITECTURE



- ① LIBRARY
- ② PARKING
- ③ MAIN ENTRY
- ④ ACCESSIBLE ENTRY
- ⑤ PATIO

SITE PLAN - PATIO

COMMUNITY MEETING FOR THE
GARFIELD PARK LIBRARY

JAYSON
ARCHITECTURE



RENDERING - EXTERIOR PATIO

COMMUNITY MEETING FOR THE
GARFIELD PARK LIBRARY

JAYSON
ARCHITECTURE



RENDERING - EXTERIOR PATIO

COMMUNITY MEETING FOR THE
GARFIELD PARK LIBRARY

JAYSON
ARCHITECTURE



RENDERING - EXTERIOR PATIO

COMMUNITY MEETING FOR THE
GARFIELD PARK LIBRARY

JAYSON
ARCHITECTURE

Vivian Rogers

Executive Director

Friends of the Santa Cruz Libraries

\$100,000 matching grant from Monterey Peninsula Foundation

DONOR OPPORTUNITIES

COMMUNITY MEETING FOR THE
GARFIELD PARK LIBRARY

JAYSON
ARCHITECTURE

- 1. What words would you use to describe the current library?**
- 2. What are your favorite things about the current library?**
- 3. What are the most critical deficiencies of the current library?**
- 4. How would you like to use the outdoor patio?**
- 5. What is one improvement that would increase your library use?**
- 6. What do you like or dislike about the design presented tonight?**

Q&A