

JAYSON
ARCHITECTURE



Community Meeting for the
BOULDER CREEK LIBRARY
FEBRUARY 7TH, 2019



**The County
of Santa Cruz**



**SANTA CRUZ
PUBLIC LIBRARIES**

BETSEY LYNBERG

Director of Capital Projects

Department of Public Works

SUSAN NEMITZ

Director

Santa Cruz Public Libraries

DAMON ADLAO

Project Manager

Department of Public Works

LAURA WHALEY

Regional Manager

Santa Cruz Public Libraries

CATHY LANDIS

Branch Manager

Santa Cruz Public Libraries

PROJECT TEAM

COMMUNITY MEETING FOR THE
BOULDER CREEK LIBRARY

JAYSON
ARCHITECTURE



ABRAHAM JAYSON

Principal, Jayson Architecture

Architect, LEED Accredited Professional, BD+C



KATIE STUART

Project Manager, Jayson Architecture

Architect, LEED Accredited Professional, BD+C

PRESENTERS

COMMUNITY MEETING FOR THE
BOULDER CREEK LIBRARY

JAYSON
ARCHITECTURE

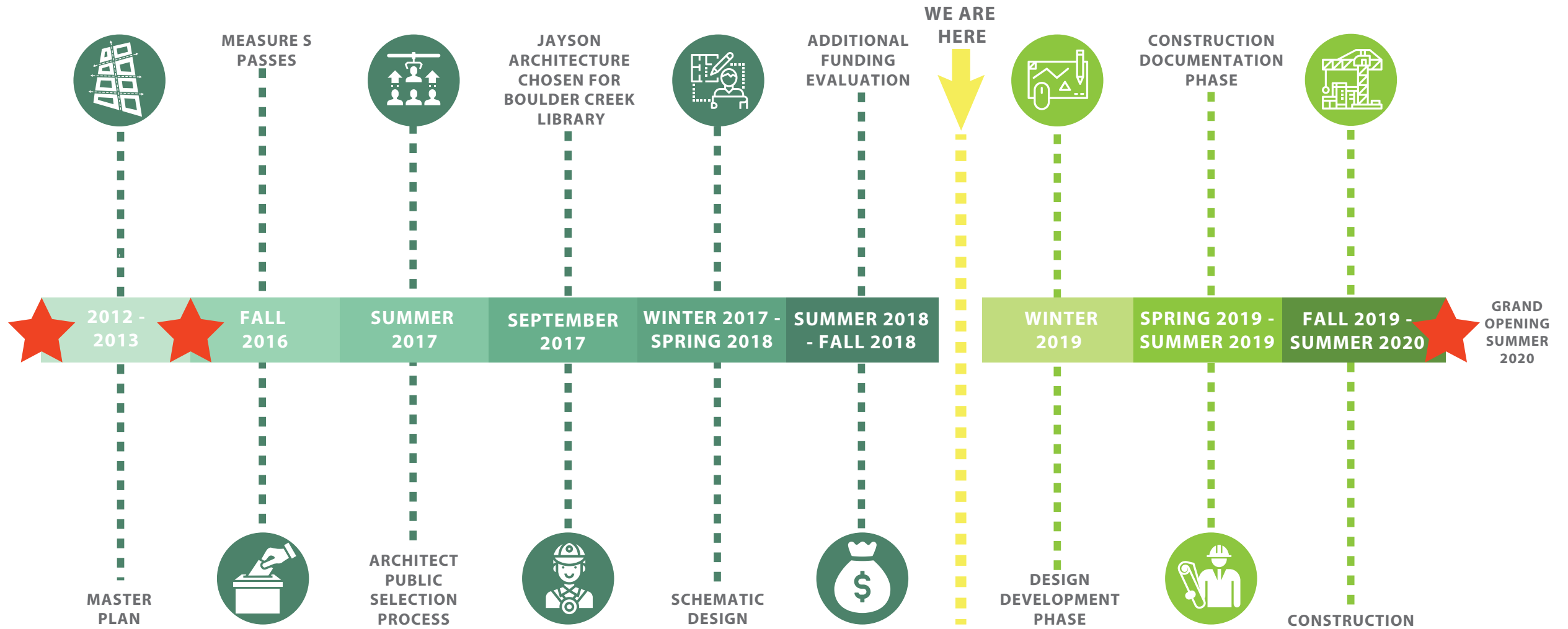


**In June 2016, voters approved Measure S:
a \$67 million bond for facilities work throughout
the Santa Cruz Public Library system**

Original project budget: \$500k

New budget: \$1.66mil

**Funds obtained through this measure will help
improve the existing space to support programs
for community members of all ages**

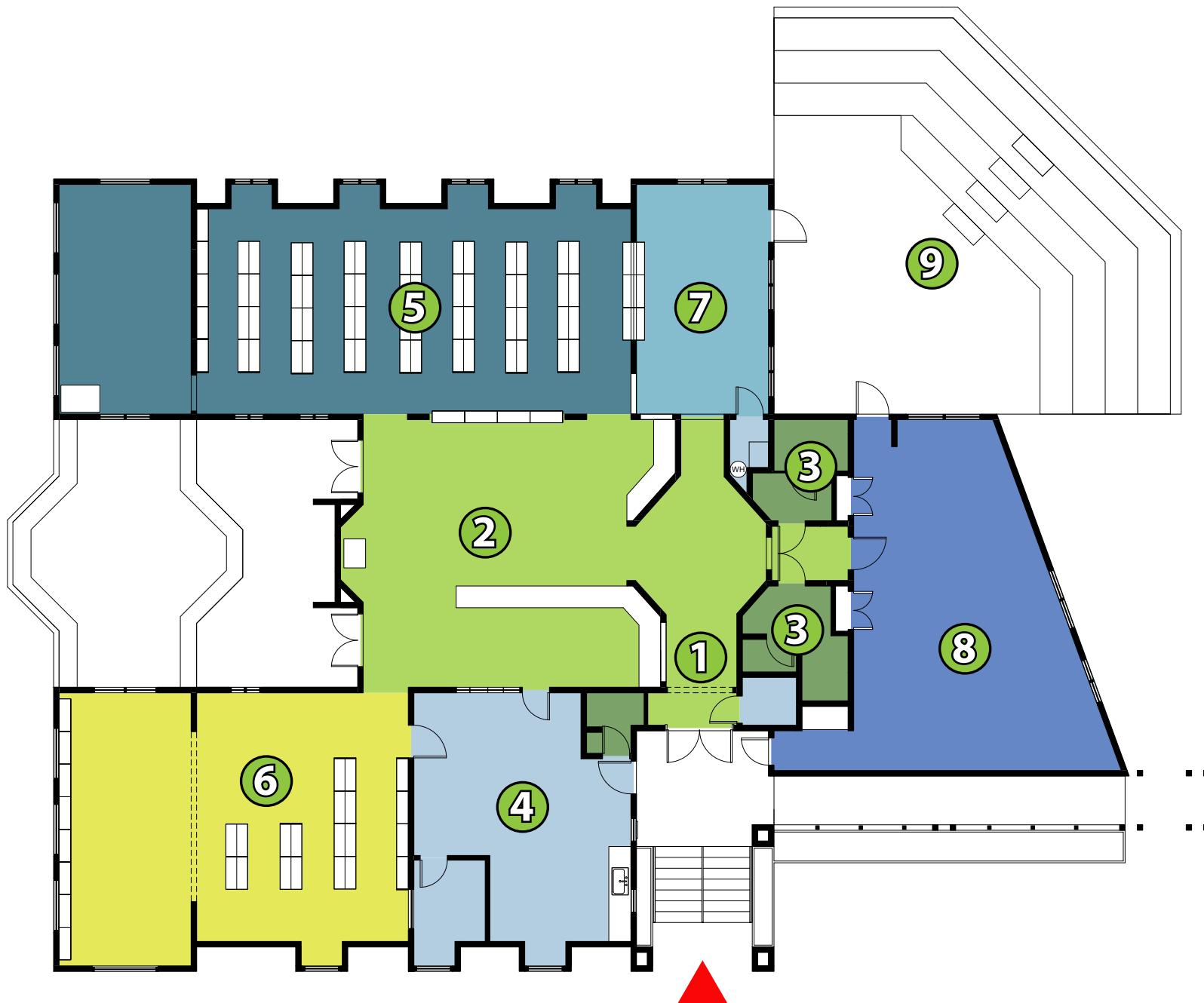


TIMELINE

COMMUNITY MEETING FOR THE
BOULDER CREEK LIBRARY

JAYSON
ARCHITECTURE

NEEDS ASSESSMENT



- ① MAIN ENTRY
- ② READING ROOM
- ③ RESTROOM
- ④ STAFF ROOM
- ⑤ ADULT COLLECTION
- ⑥ CHILDREN'S COLLECTION
- ⑦ TEEN AREA
- ⑧ COMMUNITY ROOM
- ⑨ AMPHITHEATER

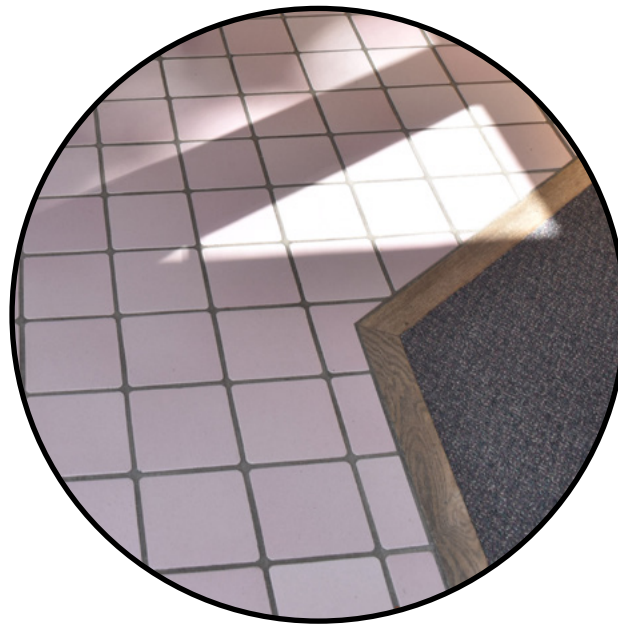
EXISTING FLOOR PLAN

COMMUNITY MEETING FOR THE
BOULDER CREEK LIBRARY

JAYSON
ARCHITECTURE



LIGHTING



FLOORING



FURNITURE



PARKING LOT LIGHTING



PLUMBING FIXTURES

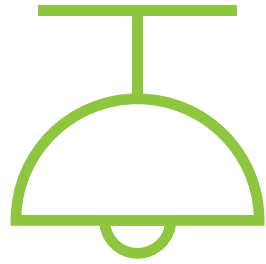


NARROW ENTRY

EXISTING CONDITION PHOTOS

COMMUNITY MEETING FOR THE
BOULDER CREEK LIBRARY

JAYSON
ARCHITECTURE



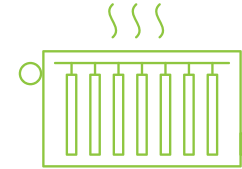
LIGHTING



PAINT



ELECTRICAL



HEATING



ADA



INTERNET



PLUMBING

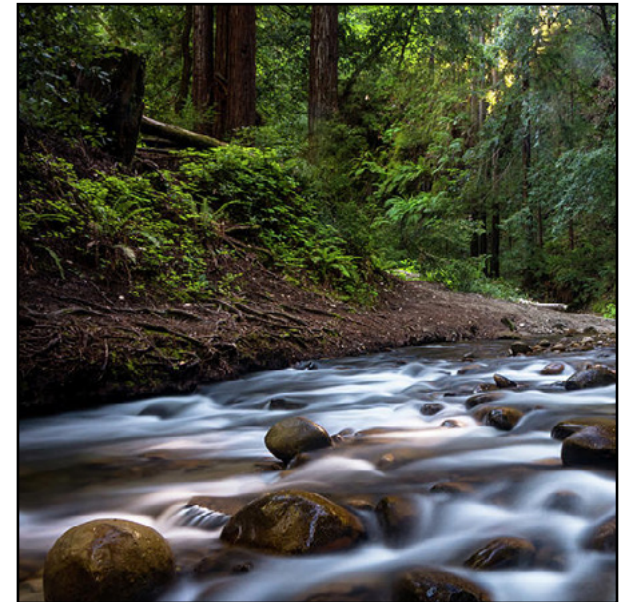
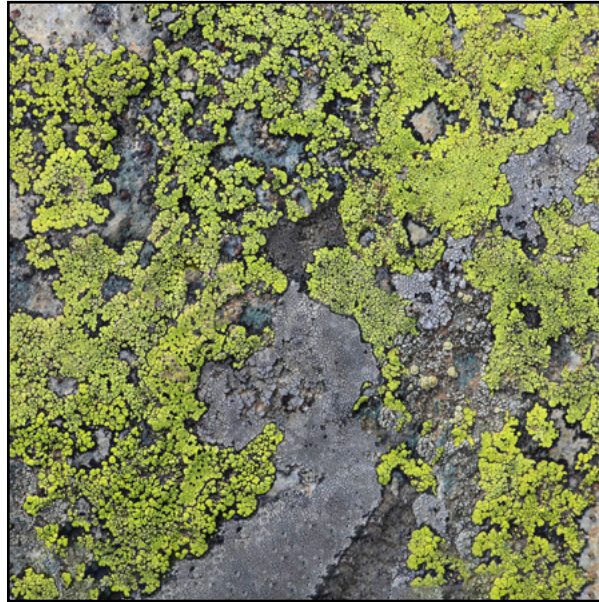
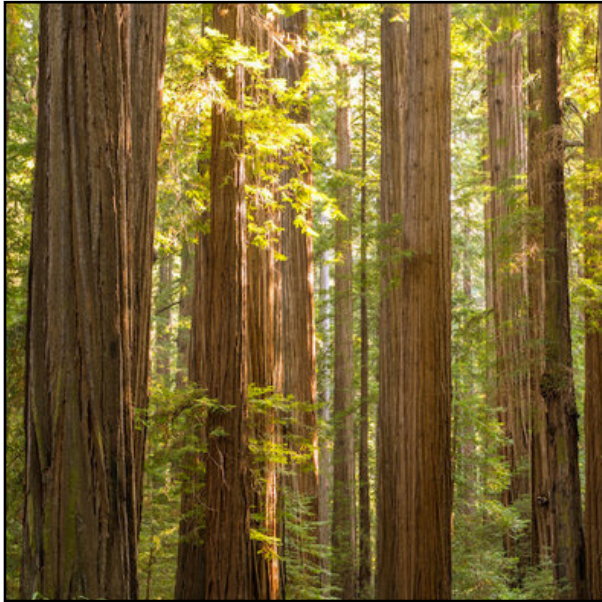


AV/TECH

An aerial photograph of a suburban neighborhood, heavily obscured by a dark green overlay. The image shows a grid of streets with houses and numerous trees. A road with several cars is visible on the right side. The overall tone is dark and moody.

JAYSON
ARCHITECTURE

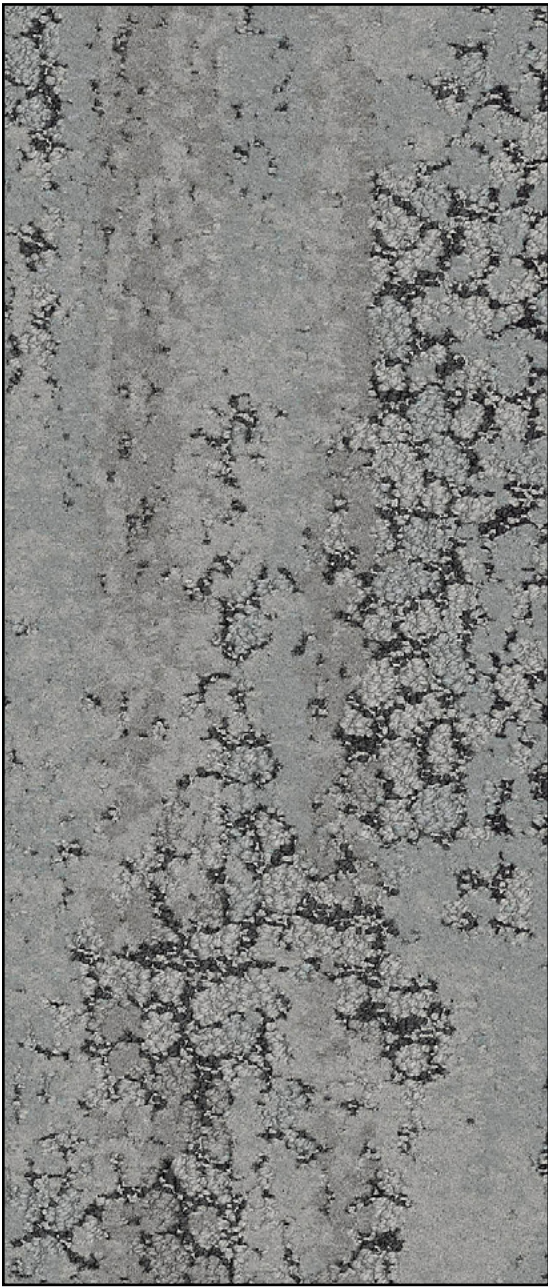
INSPIRATION & MATERIALS



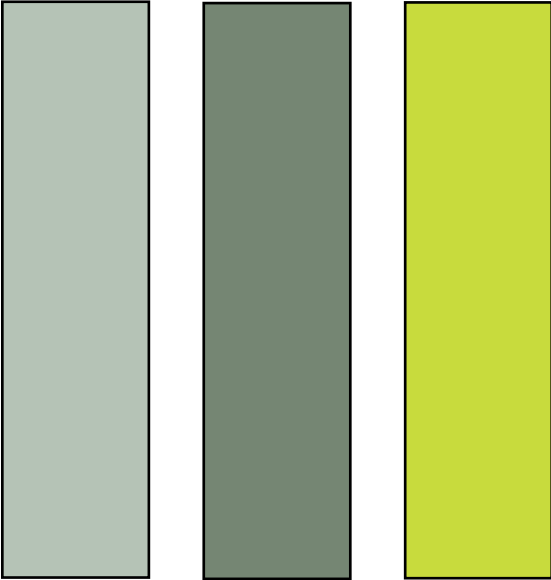
CONCEPTUAL INSPIRATION

COMMUNITY MEETING FOR THE
BOULDER CREEK LIBRARY

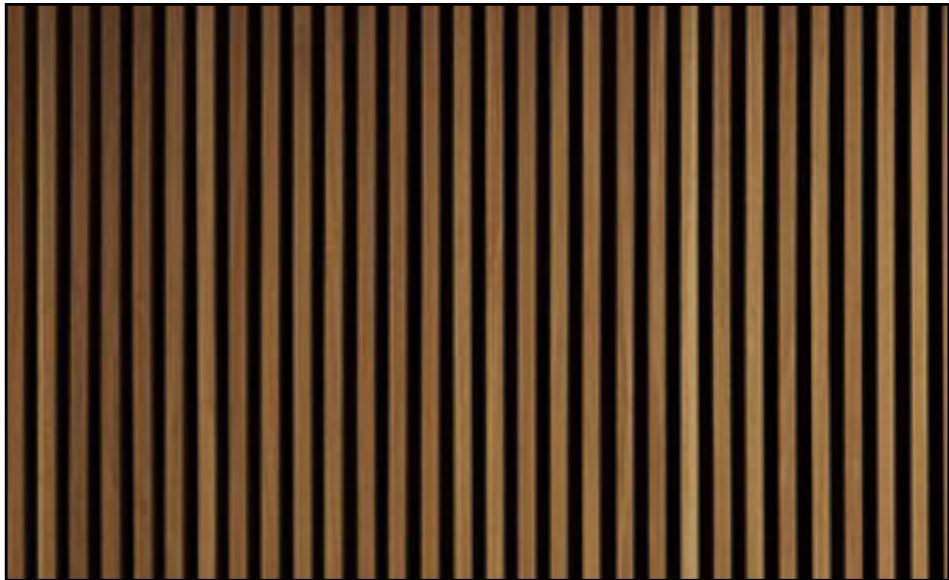
JAYSON
ARCHITECTURE



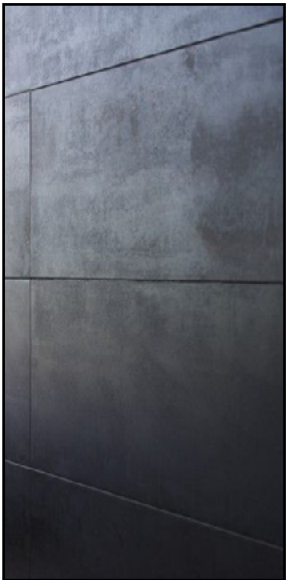
CARPET



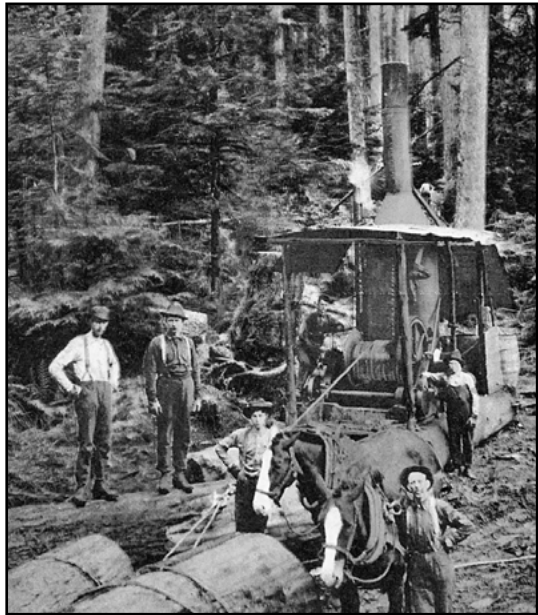
COLOR ACCENTS



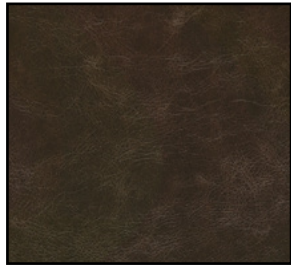
WOOD SLAT



STEEL



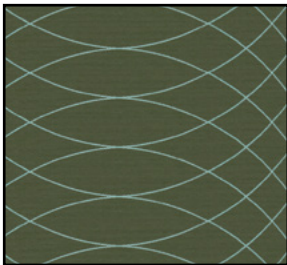
GRAPHICS



LEATHER



FABRIC



FABRIC



LEATHER



FABRIC

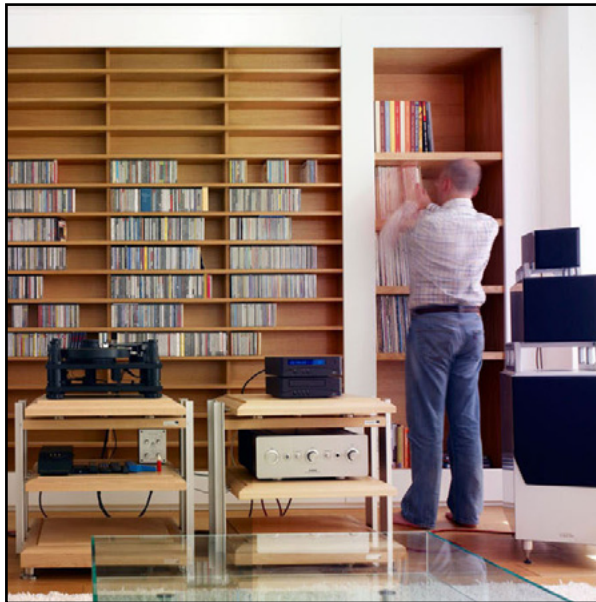
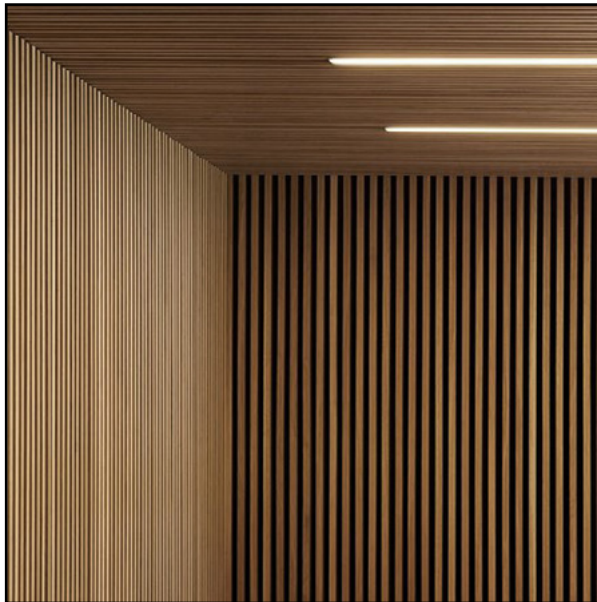


QUARTZ



WOOD

MATERIAL PALETTE



INTERIOR INSPIRATION

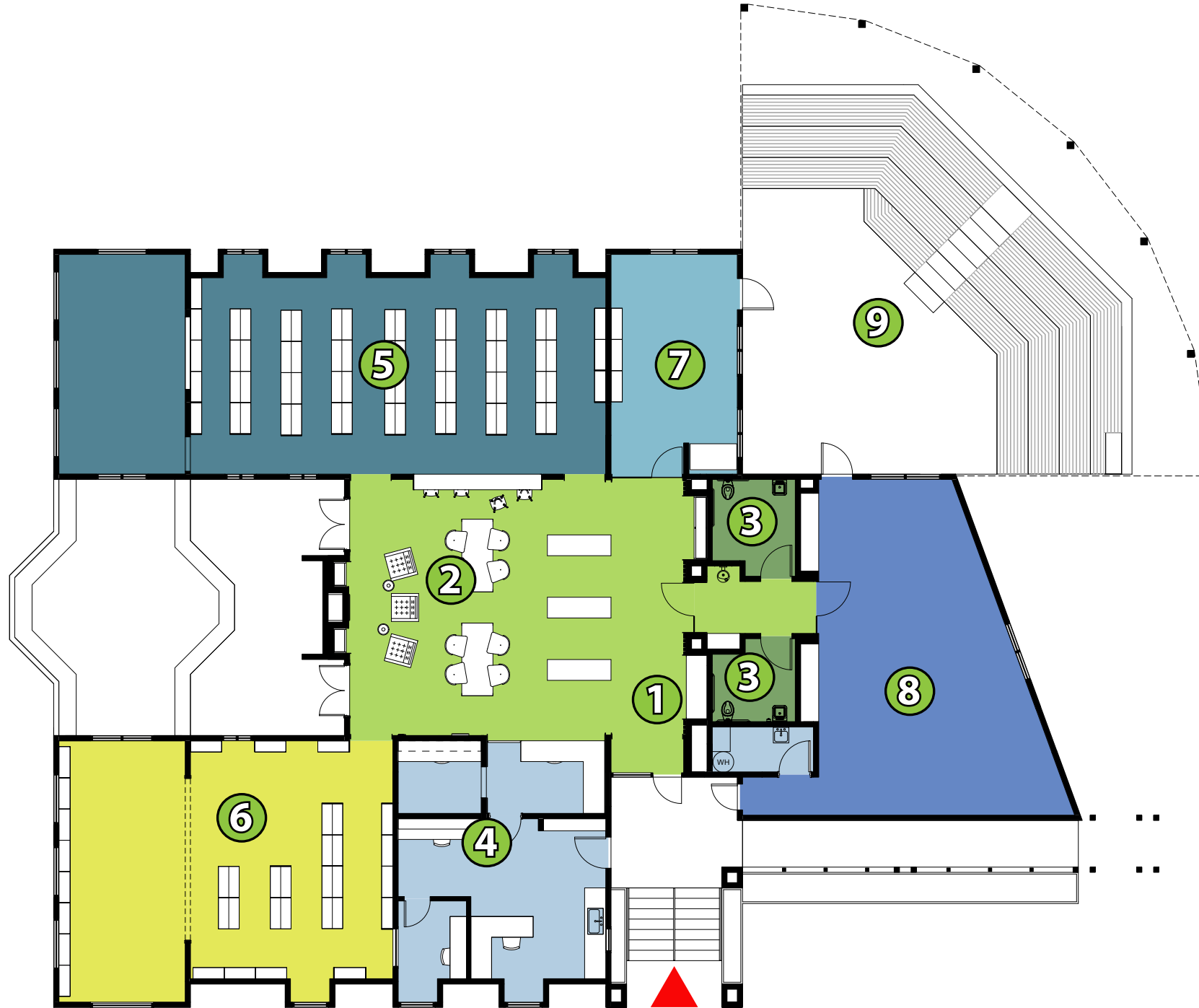
COMMUNITY MEETING FOR THE
BOULDER CREEK LIBRARY

JAYSON
ARCHITECTURE

An aerial photograph of a residential neighborhood, heavily forested with green trees. Several houses with dark roofs are visible, interspersed among the trees. A road runs vertically through the center-right of the image. The overall tone is dark and moody.

JAYSON
ARCHITECTURE

PROPOSED DESIGN

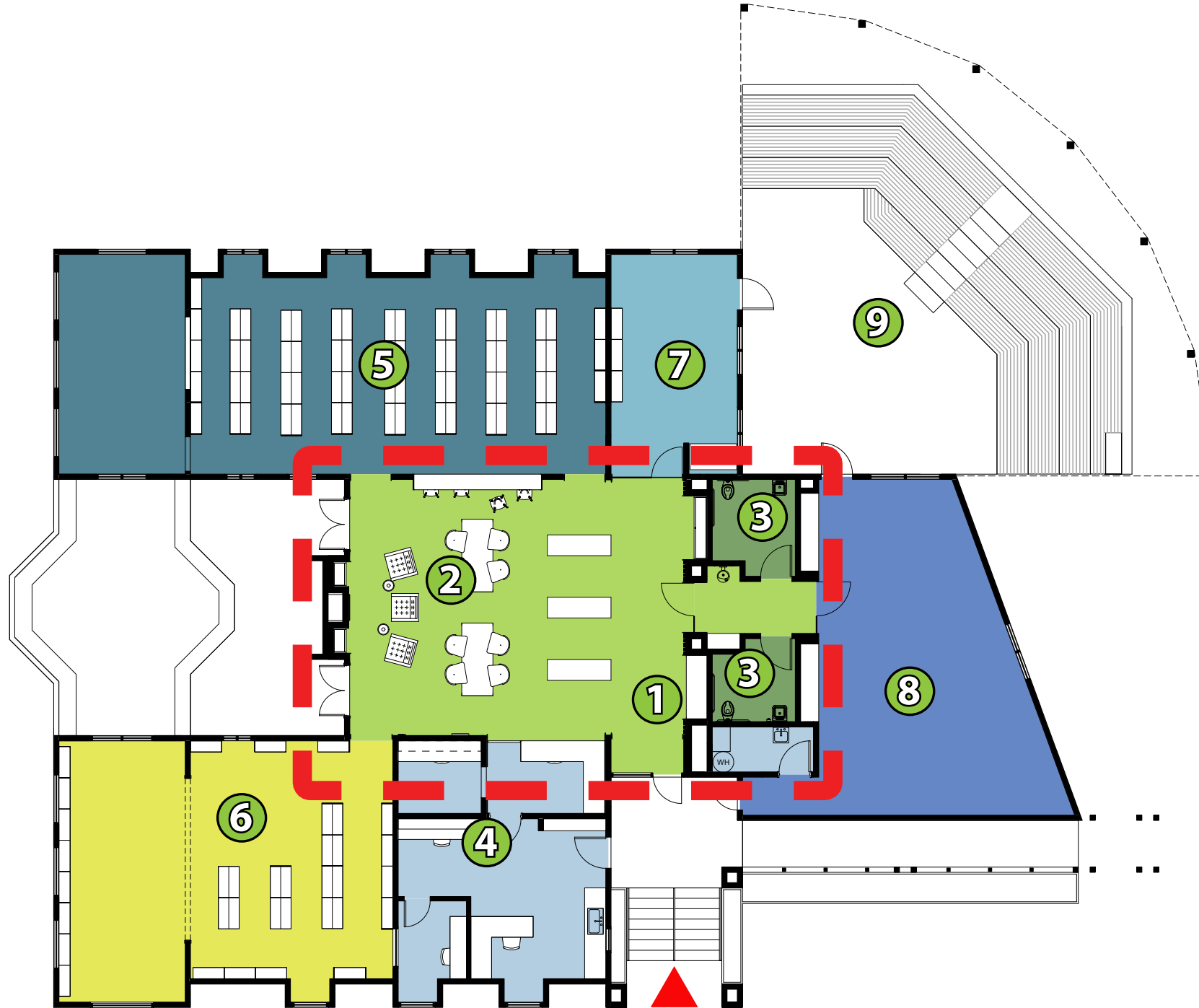


- ① MAIN ENTRY
- ② READING ROOM
- ③ RESTROOM
- ④ STAFF ROOM
- ⑤ ADULT COLLECTION
- ⑥ CHILDREN'S COLLECTION
- ⑦ TEEN AREA
- ⑧ COMMUNITY ROOM
- ⑨ AMPHITHEATER

FLOOR PLAN

COMMUNITY MEETING FOR THE
BOULDER CREEK LIBRARY

JAYSON
ARCHITECTURE



- ① MAIN ENTRY
- ② READING ROOM
- ③ RESTROOM
- ④ STAFF ROOM
- ⑤ ADULT COLLECTION
- ⑥ CHILDREN'S COLLECTION
- ⑦ TEEN AREA
- ⑧ COMMUNITY ROOM
- ⑨ AMPHITHEATER

FLOOR PLAN

COMMUNITY MEETING FOR THE
BOULDER CREEK LIBRARY

JAYSON
ARCHITECTURE



RENDERING - LOBBY/ADULT COLLECTION

COMMUNITY MEETING FOR THE
BOULDER CREEK LIBRARY

JAYSON
ARCHITECTURE



RENDERING - LOBBY/ADULT COLLECTION

COMMUNITY MEETING FOR THE
BOULDER CREEK LIBRARY

JAYSON
ARCHITECTURE



RENDERING - CENTRAL READING ROOM

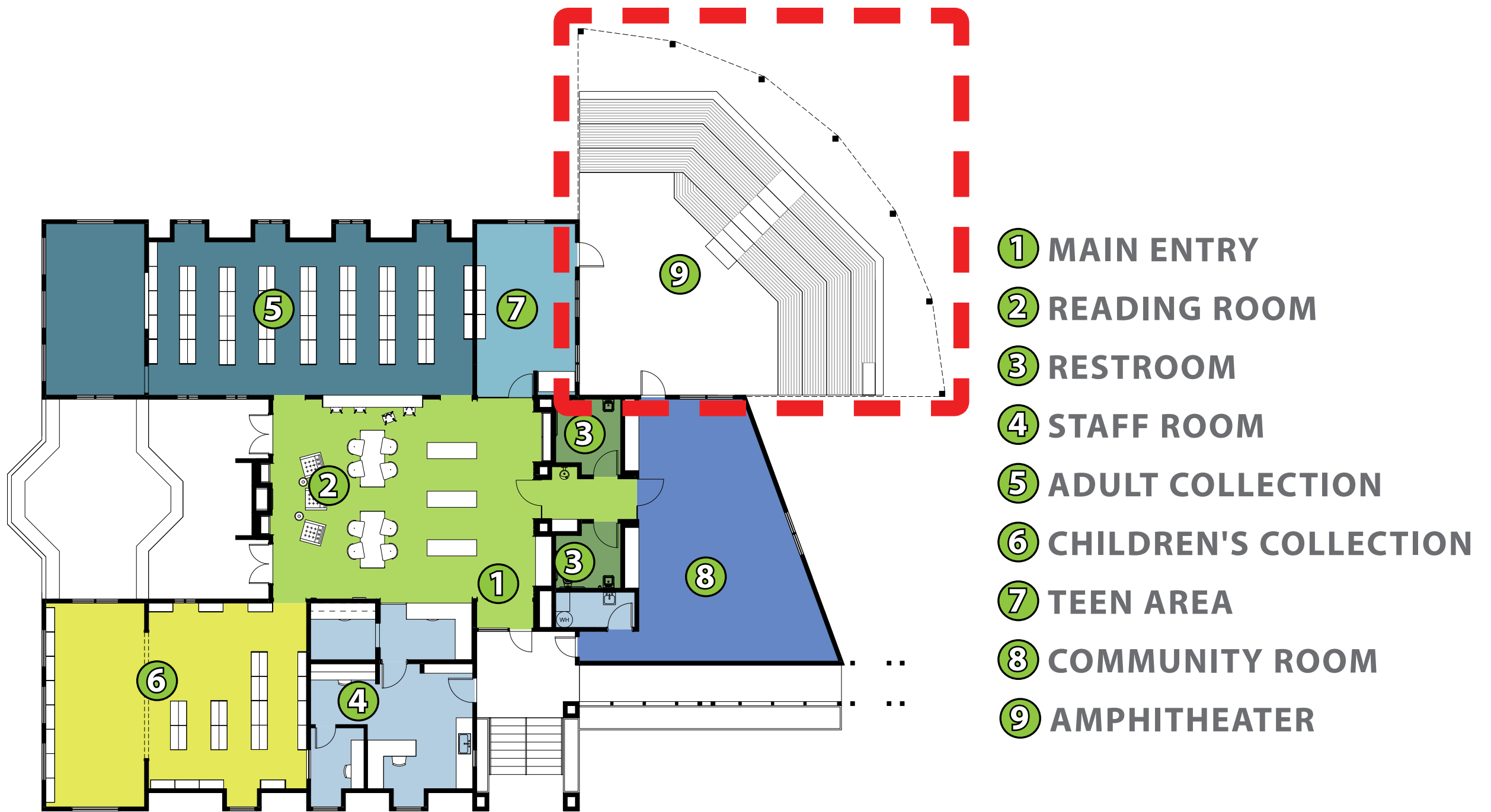
COMMUNITY MEETING FOR THE
BOULDER CREEK LIBRARY

JAYSON
ARCHITECTURE

An aerial photograph of a suburban neighborhood, heavily obscured by a dark green overlay. The image shows a grid of residential lots with houses, driveways, and numerous trees. A road runs vertically through the center-right of the frame. The overall tone is dark and moody, with the green overlay dominating the color palette.

JAYSON
ARCHITECTURE

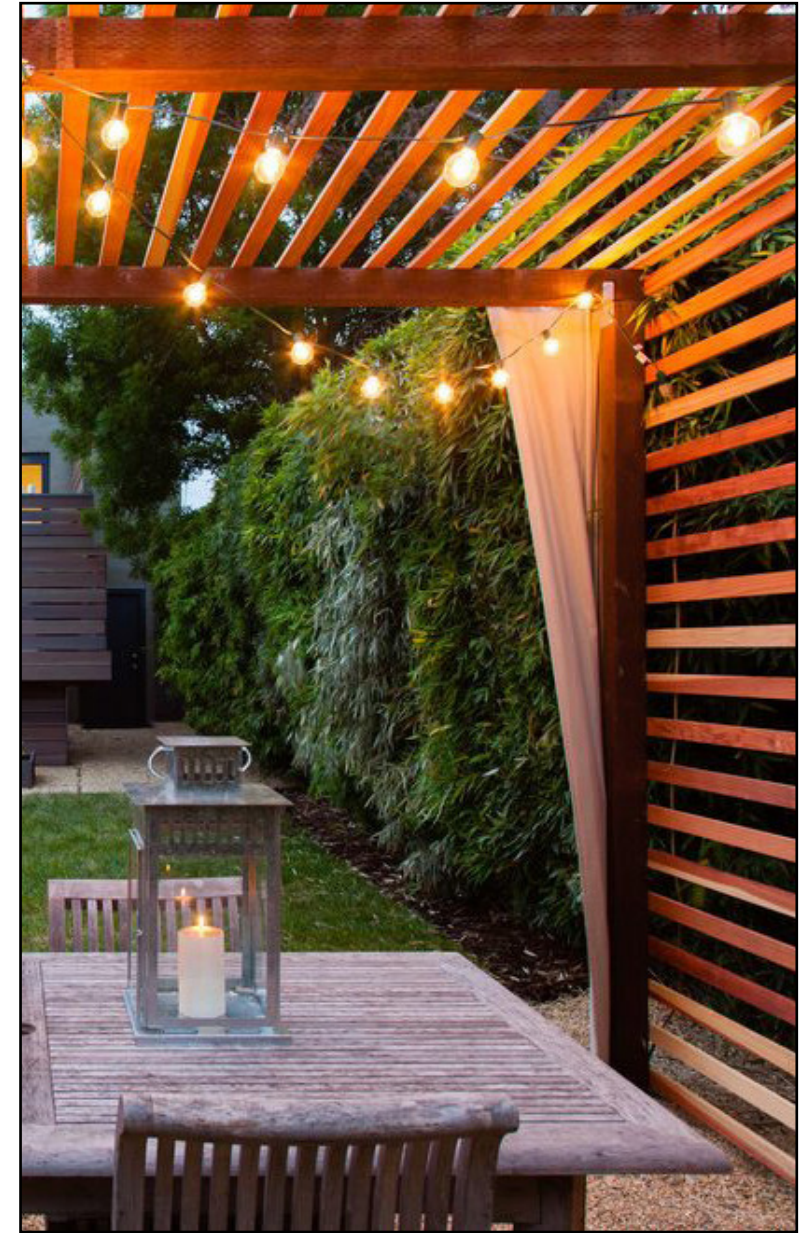
AMPHITHEATER - ALTERNATE



FLOOR PLAN

COMMUNITY MEETING FOR THE
BOULDER CREEK LIBRARY

JAYSON
ARCHITECTURE



AMPHITHEATER INSPIRATION

COMMUNITY MEETING FOR THE
BOULDER CREEK LIBRARY

JAYSON
ARCHITECTURE



RENDERING - EXTERIOR & PATIO (ALTERNATE)

COMMUNITY MEETING FOR THE
BOULDER CREEK LIBRARY

JAYSON
ARCHITECTURE

- 1. What words would you use to describe the current library?**
- 2. What are your favorite things about the current library?**
- 3. What are the most critical deficiencies of the current library?**
- 4. How would you like to use the outdoor patio?**
- 5. What is one improvement that would increase your library use?**
- 6. What do you like or dislike about the design presented tonight?**

Q&A