

JAYSON
ARCHITECTURE



GARFIELD PARK & BRANCIFORTE LIBRARIES

PRESENTATION TO THE SANTA CRUZ CITY COUNCIL | JANUARY 14TH, 2020



ABRAHAM JAYSON
Principal

Professional Credentials

Architect, California License # C33239
LEED Accredited Professional, BD+C

Education

Master of Architecture
University of Colorado, Denver

BFA, Fine Art
University of California, Santa Cruz



KATIE STUART
Associate, Project Manager

Professional Credentials

Architect, California License # C36427
LEED Accredited Professional, BD+C

Education

Bachelor of Architecture
Cal Poly, San Luis Obispo



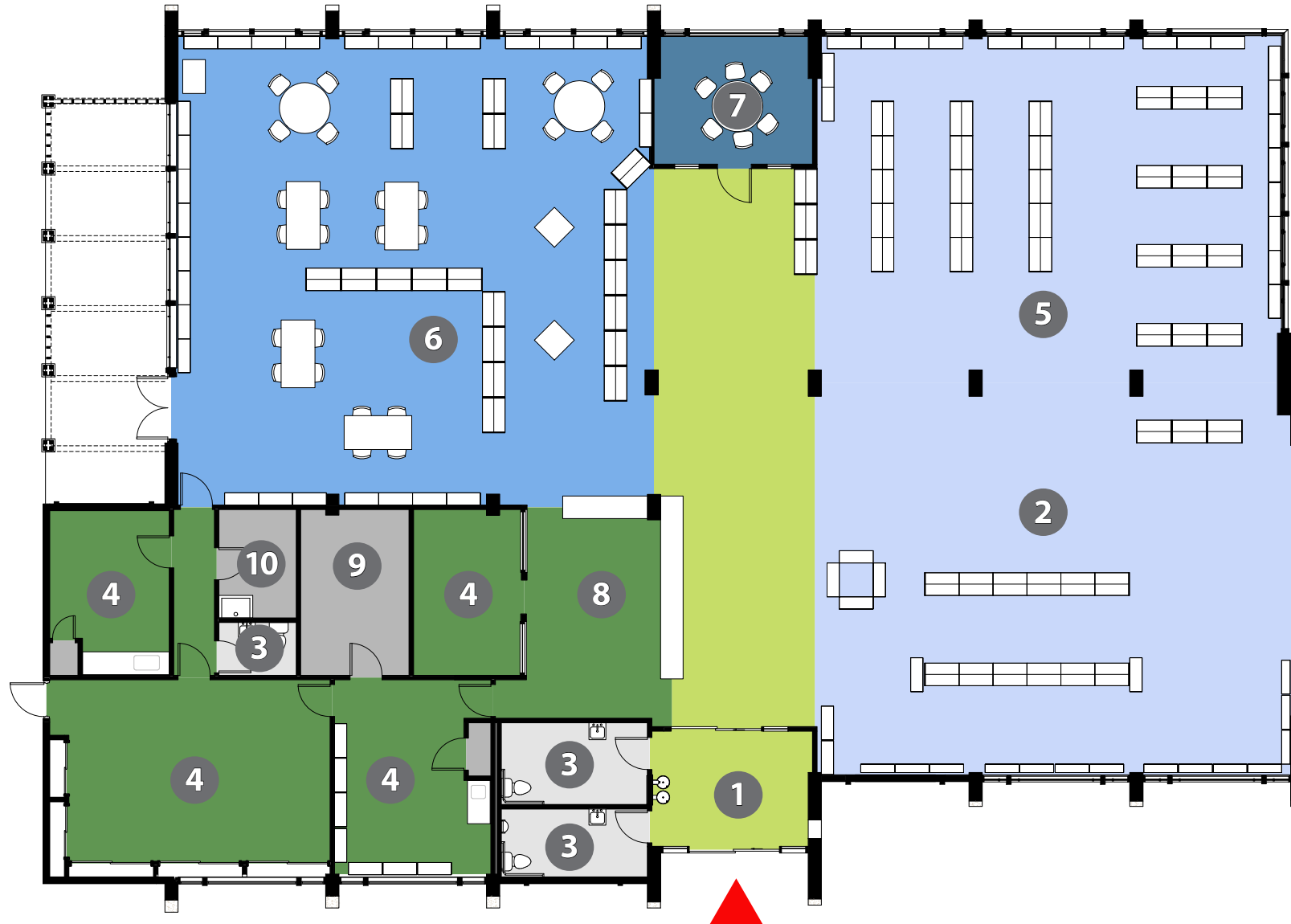
**In June 2016, voters approved Measure S:
a \$67 million bond for facilities work throughout
the Santa Cruz Public Library system**

**Funds obtained through this measure will help
improve the existing space to support programs
for community members of all ages**

An aerial photograph of Branciforte, a coastal town in Santa Cruz, California. The image shows a dense urban grid with a mix of residential and commercial buildings. A prominent highway, likely Highway 1, runs through the center of the town. The town is bordered by the Pacific Ocean to the south and west, and by green, hilly terrain to the north and east. The overall tone of the image is dark and moody, with a greenish-blue tint.

JAYSON
ARCHITECTURE

BRANCIFORTE



- ① MAIN ENTRY
- ② READING ROOM
- ③ RESTROOM
- ④ STAFF
- ⑤ ADULT
- ⑥ CHILDREN
- ⑦ TEEN
- ⑧ INFO DESK
- ⑨ MECHANICAL
- ⑩ JANITORIAL

EXISTING FLOOR PLAN

GARFIELD PARK and
BRANCIFORTE LIBRARIES

JAYSON
ARCHITECTURE



LIGHTING



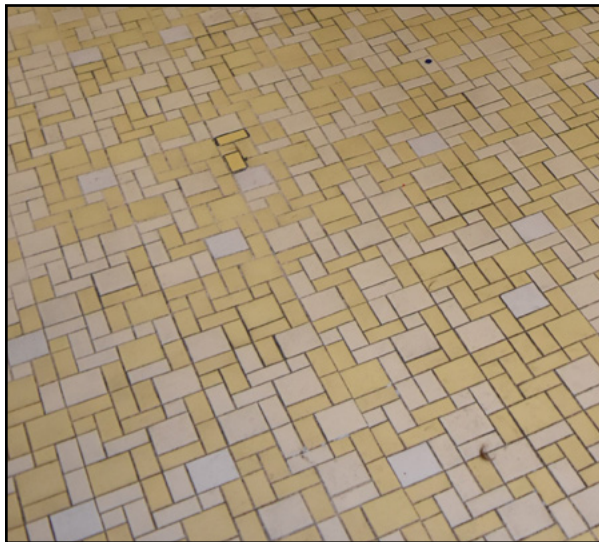
EXPOSED CONDUIT



PLUMBING FIXTURES



EXTERIOR PATIO



FLOORING



FURNITURE



CIRC DESK



ENTRY DOOR

FEATURES TO IMPROVE

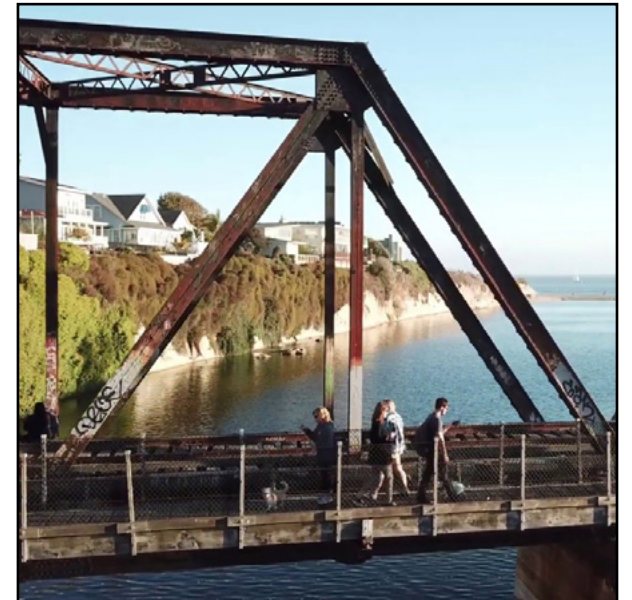
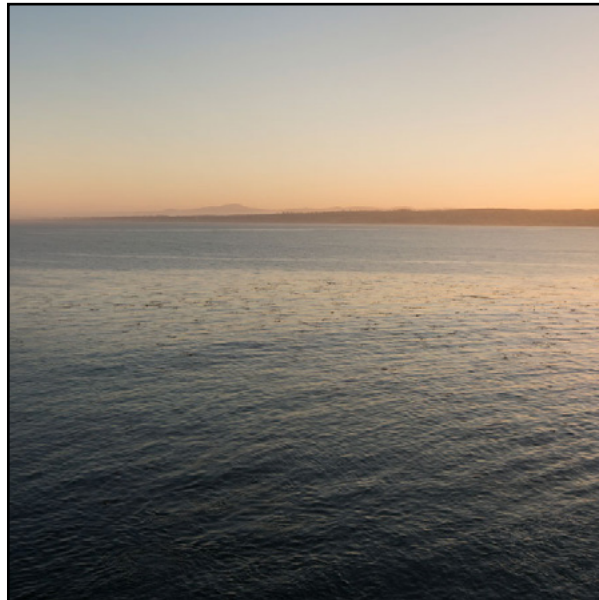
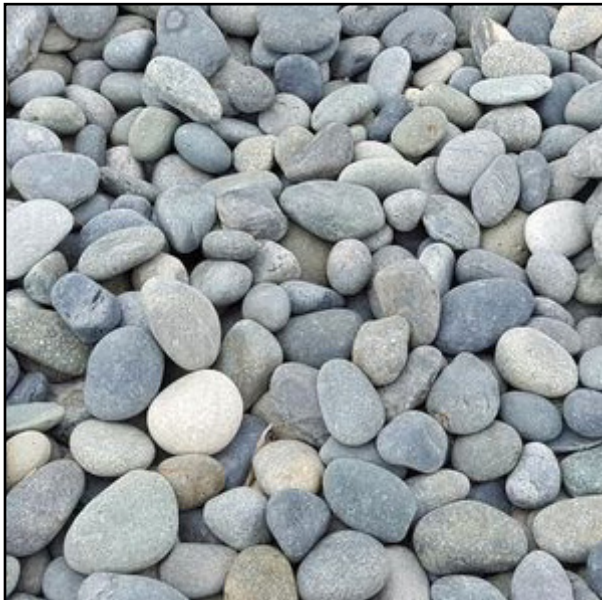
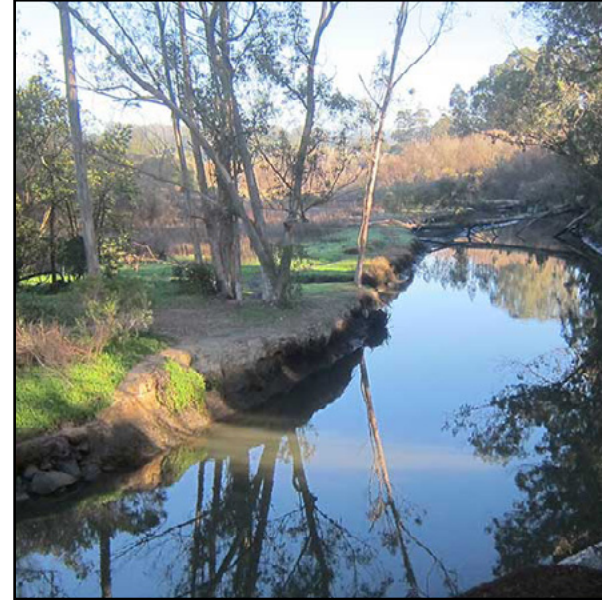
**GARFIELD PARK and
BRANCIFORTE LIBRARIES**

JAYSON
ARCHITECTURE

An aerial photograph of a coastal city, likely San Francisco, showing a dense urban grid, a winding river, and surrounding green hills. The image is darkened to serve as a background for text.

JAYSON
ARCHITECTURE

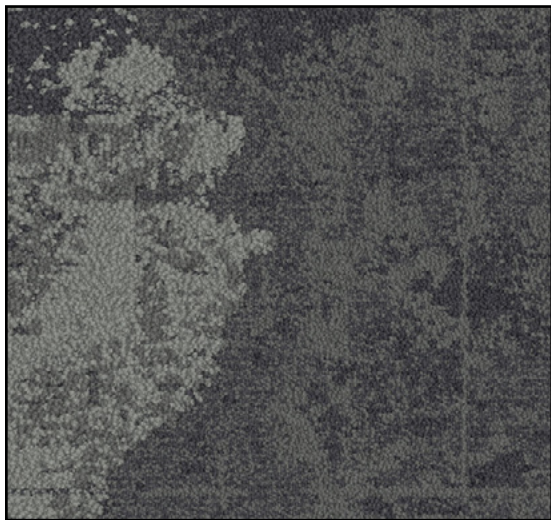
PROPOSED DESIGN



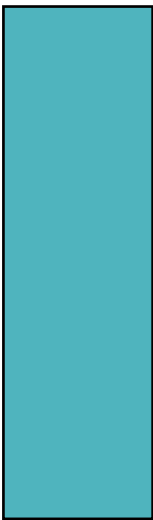
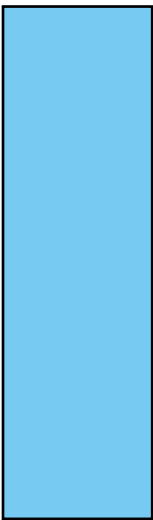
CONCEPTUAL INSPIRATION

GARFIELD PARK and
BRANCIFORTE LIBRARIES

JAYSON
ARCHITECTURE



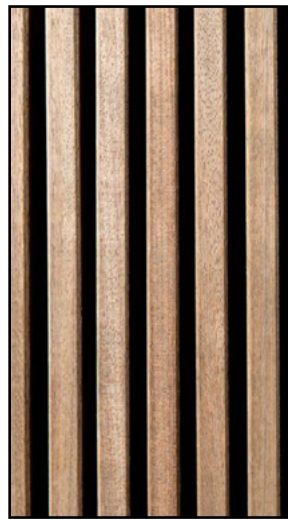
CARPET



COLOR ACCENTS



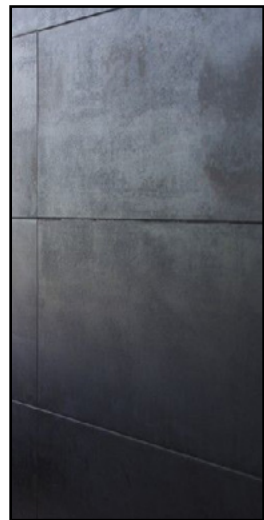
WOOD VENEER



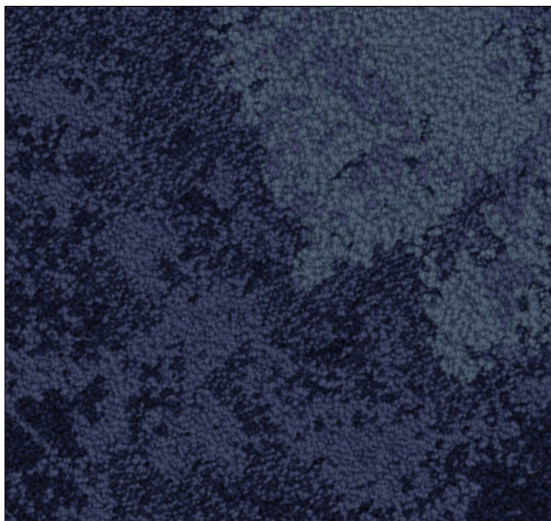
WOOD SLAT



WOOD T&G



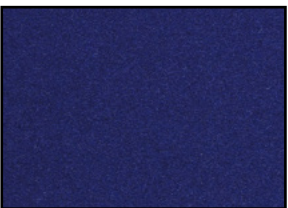
STEEL



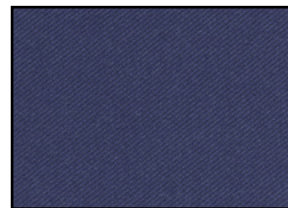
CARPET



ETCHED GLASS



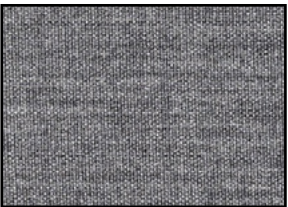
FABRIC



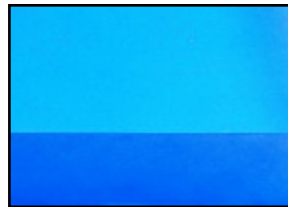
FABRIC



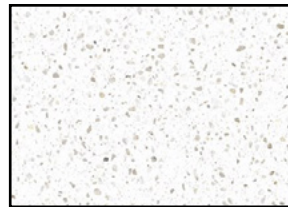
FABRIC



FABRIC



RESIN



QUARTZ

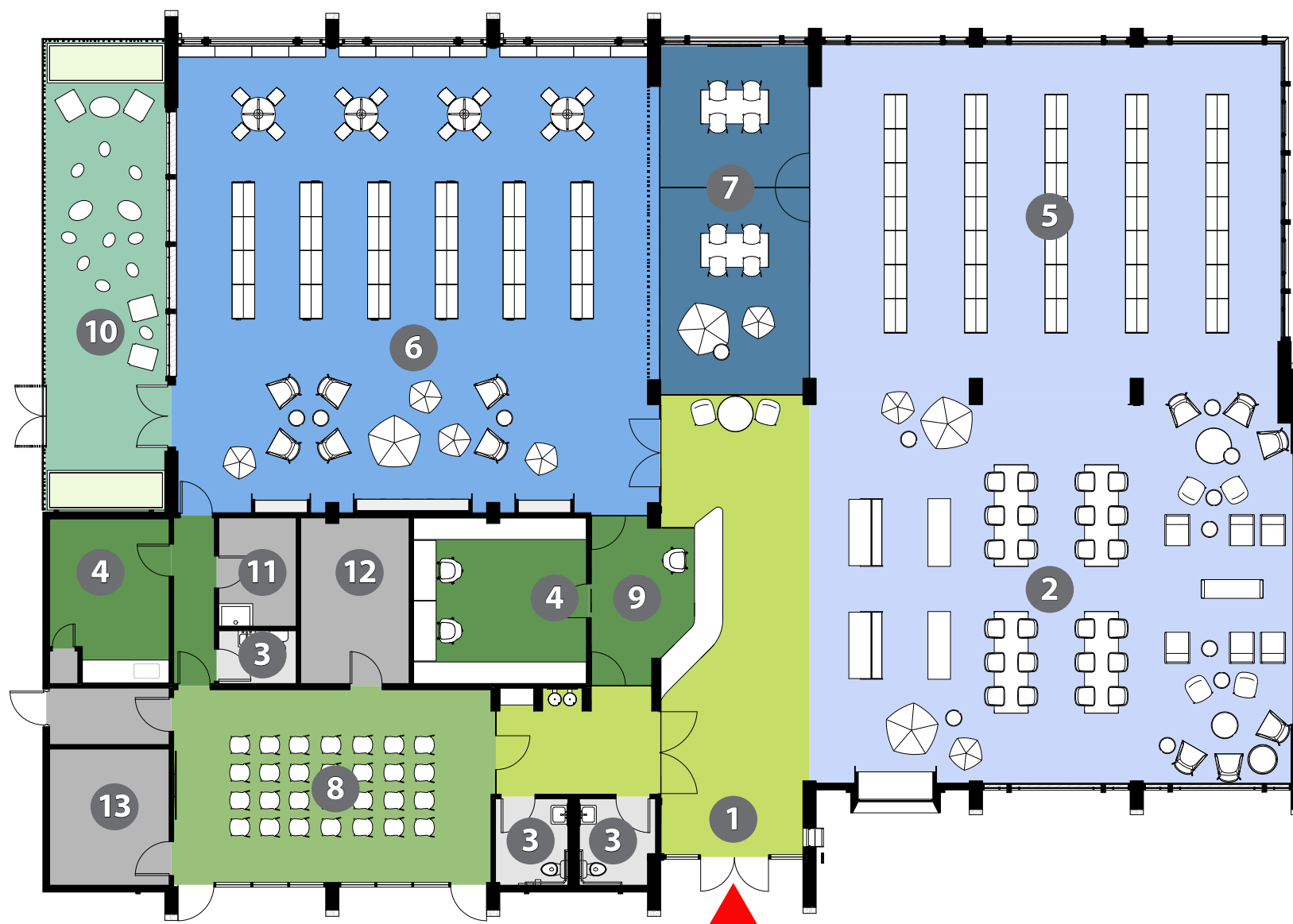


CONCRETE

MATERIAL PALETTE

GARFIELD PARK and
BRANCIFORTE LIBRARIES

JAYSON
ARCHITECTURE



- ① MAIN ENTRY
- ② READING ROOM
- ③ RESTROOM
- ④ STAFF
- ⑤ ADULT
- ⑥ CHILDREN
- ⑦ TEEN
- ⑧ COMMUNITY ROOM
- ⑨ INFO DESK
- ⑩ CHILDREN'S PATIO
- ⑪ JANITORIAL
- ⑫ MECHANICAL
- ⑬ STORAGE

FLOOR PLAN - PROPOSED

GARFIELD PARK and
BRANCIFORTE LIBRARIES

JAYSON
ARCHITECTURE



RENDERING - BAY WINDOW EXTERIOR

GARFIELD PARK and
BRANCIFORTE LIBRARIES

JAYSON
ARCHITECTURE



RENDERING - ENTRY & CIRCULATION DESK

GARFIELD PARK and
BRANCIFORTE LIBRARIES

JAYSON
ARCHITECTURE



RENDERING - READING ROOM LOUNGE

GARFIELD PARK and
BRANCIFORTE LIBRARIES

JAYSON
ARCHITECTURE



RENDERING - BAY WINDOW INTERIOR

**GARFIELD PARK and
BRANCIFORTE LIBRARIES**

JAYSON
ARCHITECTURE



RENDERING - TEEN ROOM

GARFIELD PARK and
BRANCIFORTE LIBRARIES

JAYSON
ARCHITECTURE



RENDERING - CHILDREN'S READING ROOM

GARFIELD PARK and
BRANCIFORTE LIBRARIES

JAYSON
ARCHITECTURE



RENDERING - CHILDREN'S ROOM SEATING

**GARFIELD PARK and
BRANCIFORTE LIBRARIES**

JAYSON
ARCHITECTURE



RENDERING - CHILDREN'S ROOM SEATING

GARFIELD PARK and
BRANCIFORTE LIBRARIES

JAYSON
ARCHITECTURE



RENDERING - CHILDREN'S PATIO

GARFIELD PARK and
BRANCIFORTE LIBRARIES

JAYSON
ARCHITECTURE



RENDERING - COMMUNITY ROOM INTERIOR

GARFIELD PARK and
BRANCIFORTE LIBRARIES

JAYSON
ARCHITECTURE

An aerial photograph of a city area, likely Garfield Park, showing a dense grid of streets and buildings. The image is dark and has a greenish tint. The city is surrounded by green hills and a body of water is visible on the right side.

JAYSON
ARCHITECTURE

GARFIELD PARK



- ① MAIN ENTRY
- ② ADULT
- ③ CHILDREN
- ④ PUBLIC
- ⑤ COMPUTERS
- ⑥ CHILDREN'S PROGRAMMING
- ⑦ STAFF
- ⑧ MEETING ROOM
- ⑨ RESTROOM

EXISTING FLOOR PLAN

GARFIELD PARK and
BRANCIFORTE LIBRARIES

JAYSON
ARCHITECTURE



LIGHTING



FURNITURE



FIRE PLACE



CHILDREN'S AREA



FLOORING



STACKS



CIRC DESK



COVERED WINDOWS

FEATURES TO IMPROVE

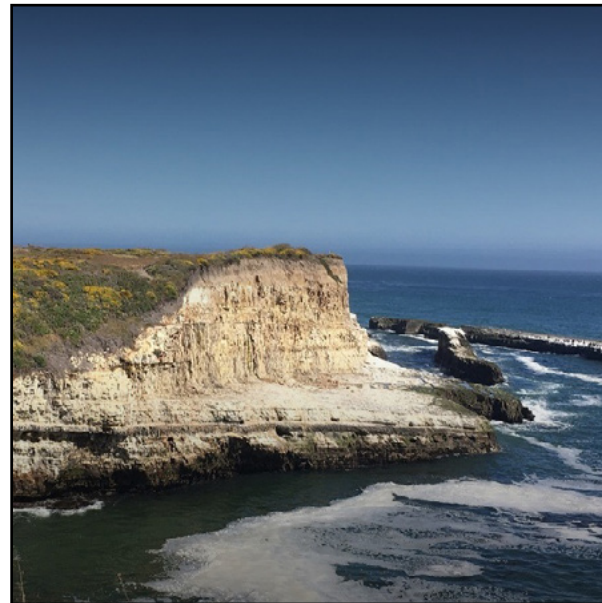
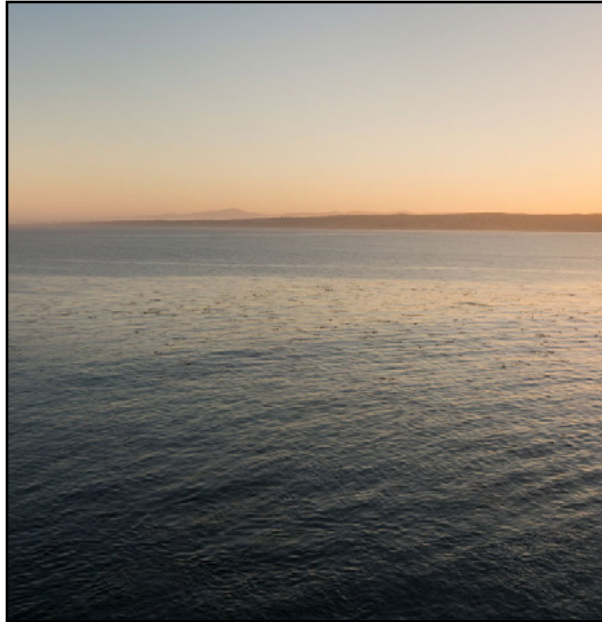
**GARFIELD PARK and
BRANCIFORTE LIBRARIES**

JAYSON
ARCHITECTURE

An aerial photograph of a coastal city, likely San Francisco, showing a dense urban grid, a winding river, and surrounding green hills. The image is darkened to serve as a background for text.

JAYSON
ARCHITECTURE

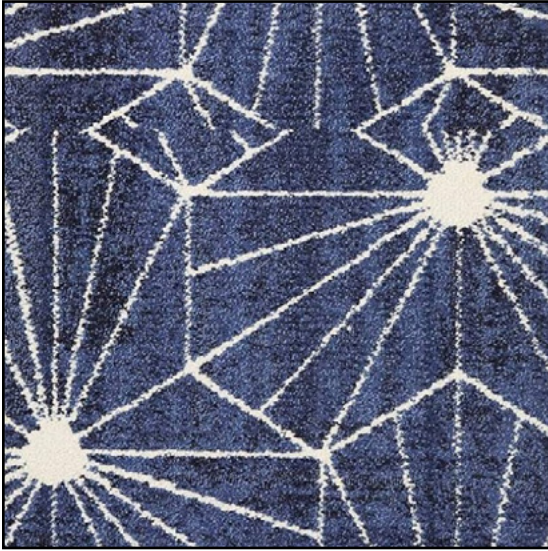
PROPOSED DESIGN



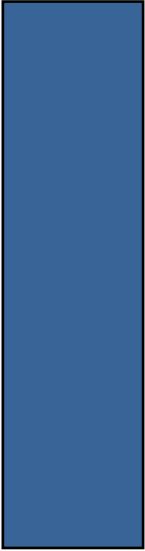
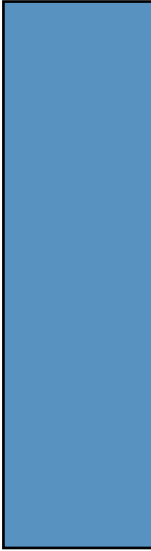
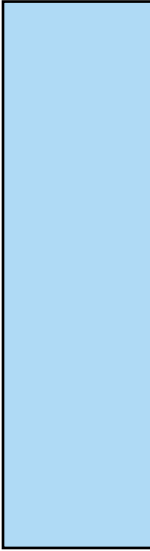
CONCEPTUAL INSPIRATION

GARFIELD PARK and
BRANCIFORTE LIBRARIES

JAYSON
ARCHITECTURE



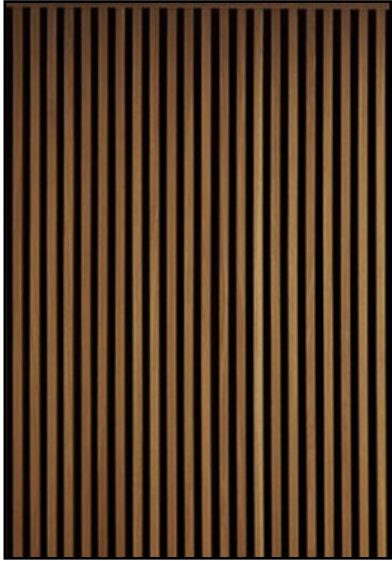
CARPET



COLOR ACCENTS



WOOD CABINETS



WOOD SLATS



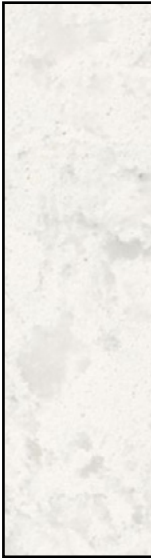
WOOD FLOOR



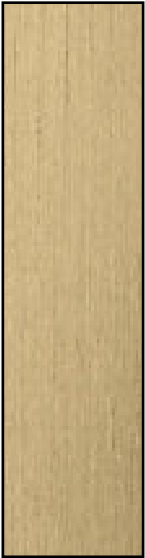
CARPET



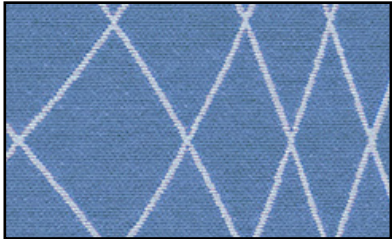
TILE



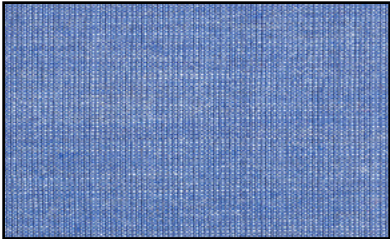
QUARTZ



BRASS



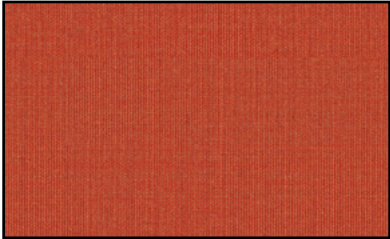
FABRIC



FABRIC



FABRIC

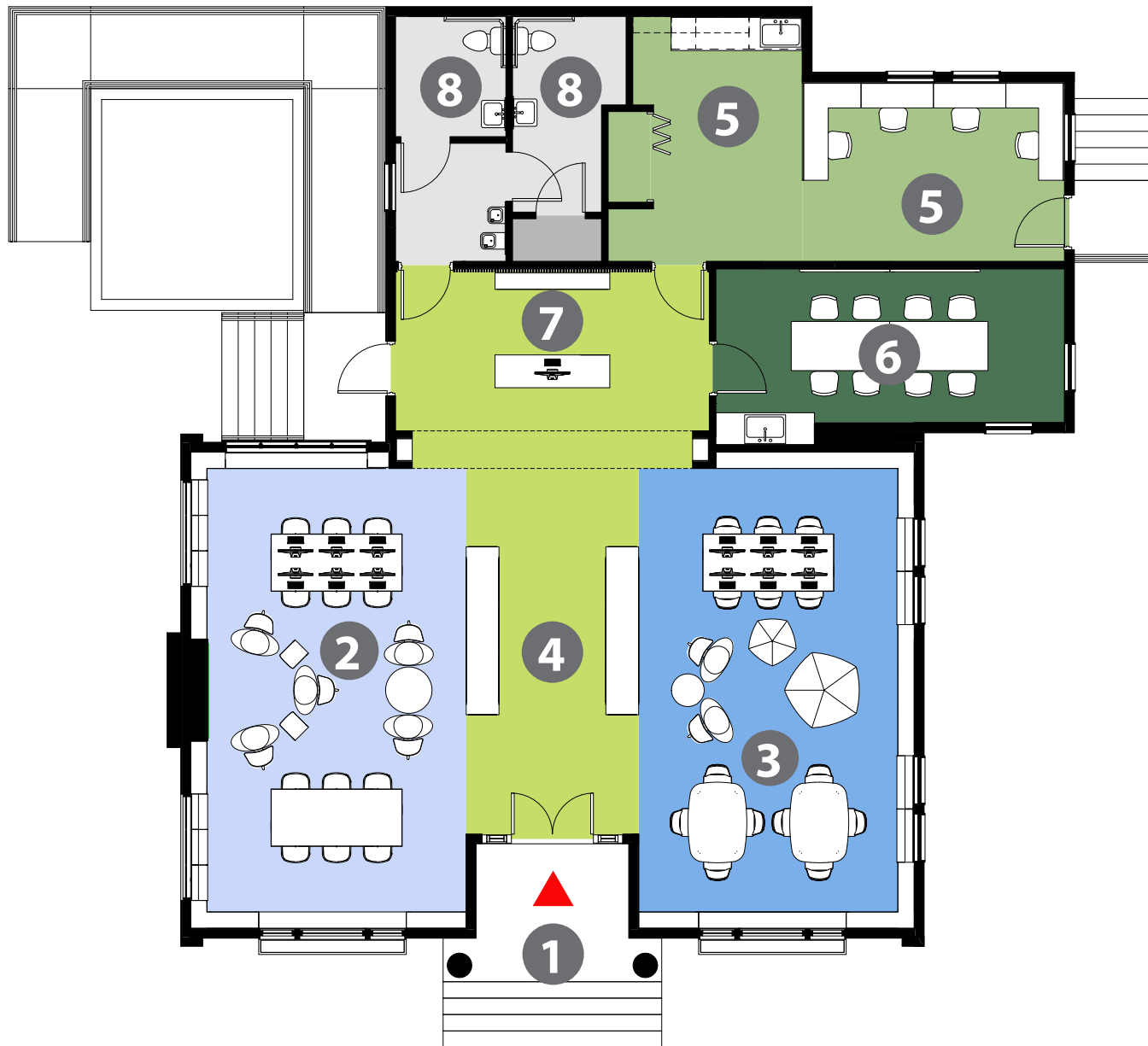


FABRIC

MATERIAL PALETTE

GARFIELD PARK and
BRANCIFORTE LIBRARIES

JAYSON
ARCHITECTURE



- 1 MAIN ENTRY
- 2 ADULT
- 3 CHILDREN
- 4 PUBLIC
- 5 STAFF
- 6 MEETING ROOM
- 7 INFO DESK
- 8 RESTROOM



RENDERING - ENTRY TOWARDS CIRCULATION DESK

GARFIELD PARK and
BRANCIFORTE LIBRARIES

JAYSON
ARCHITECTURE



RENDERING - CIRCULATION DESK

GARFIELD PARK and
BRANCIFORTE LIBRARIES

JAYSON
ARCHITECTURE



RENDERING - ADULT'S READING AREA

GARFIELD PARK and
BRANCIFORTE LIBRARIES

JAYSON
ARCHITECTURE



RENDERING - CHILDREN'S READING AREA

**GARFIELD PARK and
BRANCIFORTE LIBRARIES**

JAYSON
ARCHITECTURE



RENDERING - CHILDREN'S READING AREA

**GARFIELD PARK and
BRANCIFORTE LIBRARIES**

JAYSON
ARCHITECTURE



RENDERING - CHILDREN'S READING AREA

GARFIELD PARK and
BRANCIFORTE LIBRARIES

JAYSON
ARCHITECTURE

An aerial photograph of the Branciforte area, showing a dense urban grid, a river, and surrounding green hills. The image is darkened to serve as a background for the text.

JAYSON
ARCHITECTURE

BRANCIFORTE - SCENARIO B



CHILDREN'S READING ROOM

GARFIELD PARK and
BRANCIFORTE LIBRARIES

JAYSON
ARCHITECTURE



SCENARIO B - CHILDREN'S READING ROOM

GARFIELD PARK and
BRANCIFORTE LIBRARIES

JAYSON
ARCHITECTURE



CHILDREN'S PATIO

**GARFIELD PARK and
BRANCIFORTE LIBRARIES**

JAYSON
ARCHITECTURE



SCENARIO B - CHILDREN'S PATIO

**GARFIELD PARK and
BRANCIFORTE LIBRARIES**

JAYSON
ARCHITECTURE



EXTERIOR

GARFIELD PARK and
BRANCIFORTE LIBRARIES

JAYSON
ARCHITECTURE



SCENARIO B - EXTERIOR

**GARFIELD PARK and
BRANCIFORTE LIBRARIES**

JAYSON
ARCHITECTURE



COMMUNITY ROOM INTERIOR

GARFIELD PARK and
BRANCIFORTE LIBRARIES

JAYSON
ARCHITECTURE



SCENARIO B - COMMUNITY ROOM INTERIOR

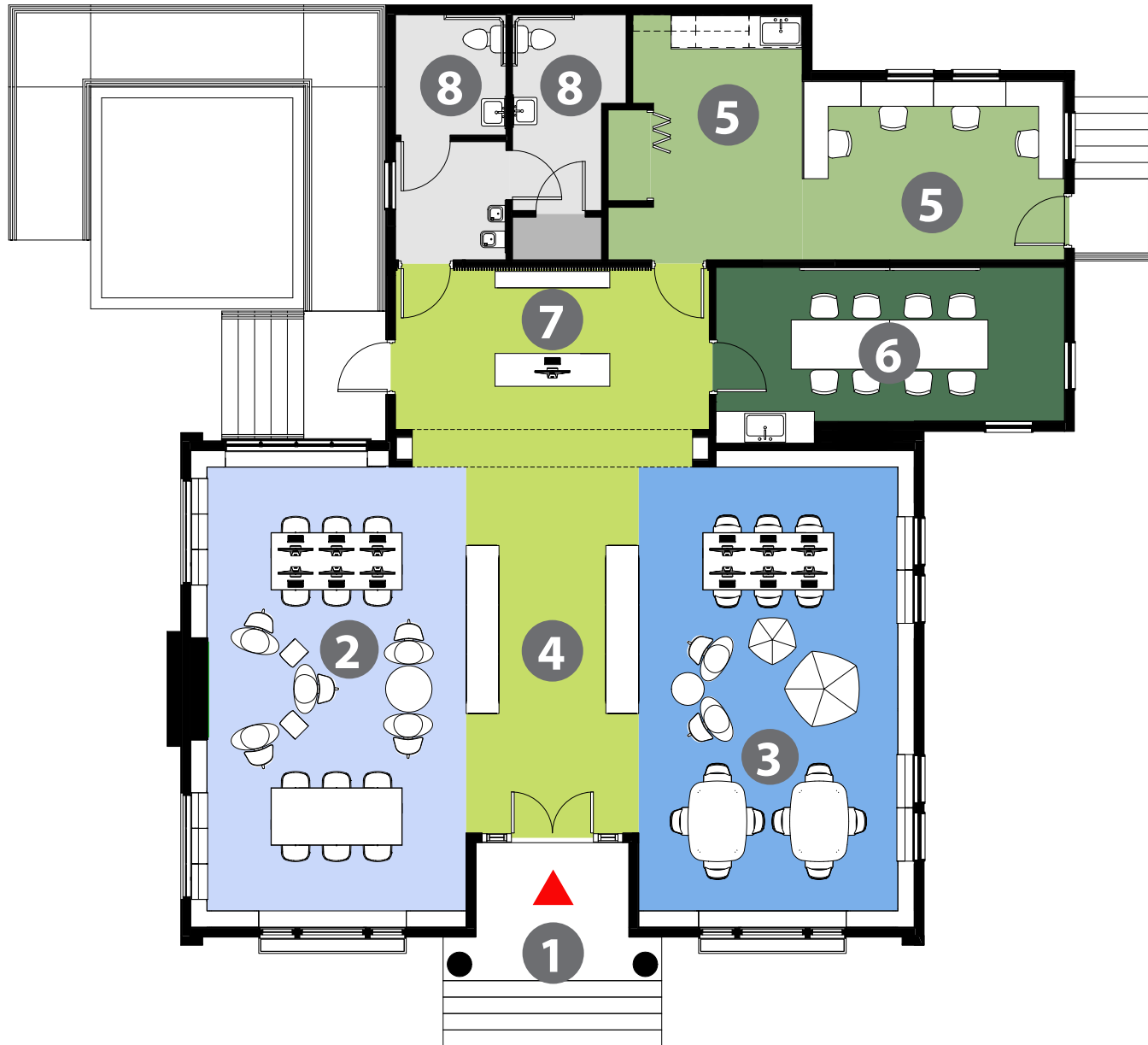
**GARFIELD PARK and
BRANCIFORTE LIBRARIES**

JAYSON
ARCHITECTURE

An aerial photograph of a city area, likely Garfield Park, with a dark green overlay. The map shows a dense grid of streets and buildings, with a river or waterway running through the center. The overlay is darker in some areas, possibly indicating specific project zones or environmental features.

JAYSON
ARCHITECTURE

GARFIELD PARK - SCENARIO B



- 1 MAIN ENTRY
- 2 ADULT
- 3 CHILDREN
- 4 PUBLIC
- 5 STAFF
- 6 MEETING ROOM
- 7 INFO DESK
- 8 RESTROOM



- 1** MAIN ENTRY
- 2** ADULT
- 3** CHILDREN
- 4** PUBLIC
- 5** RESTROOM
- 6** INFO DESK
- 7** STAFF (NO CHANGE)

SCENARIO B - FLOOR PLAN

**GARFIELD PARK and
BRANCIFORTE LIBRARIES**

JAYSON
ARCHITECTURE



ADULT'S READING AREA

**GARFIELD PARK and
BRANCIFORTE LIBRARIES**

JAYSON
ARCHITECTURE



SCENARIO B - ADULT'S READING AREA

**GARFIELD PARK and
BRANCIFORTE LIBRARIES**

JAYSON
ARCHITECTURE



ENTRY TOWARDS CIRCULATION DESK

GARFIELD PARK and
BRANCIFORTE LIBRARIES

JAYSON
ARCHITECTURE



SCENARIO B - ENTRY TOWARDS CIRCULATION DESK

GARFIELD PARK and
BRANCIFORTE LIBRARIES

JAYSON
ARCHITECTURE

REDUCED SCOPE TAKEAWAYS

BRANCIFORTE:

- LOSS OF CHILDREN'S PATIO
- LOSS OF WINDOWS AT CHILDREN'S AREA
- NO WOOD AT COMMUNITY ROOM
- NO RELOCATED GATE

GARFIELD PARK:

- REDUCTION IN COLLECTIONS
- STAFF AREAS REMAIN OVERSIZED
- ACCESSIBLE RAMP STILL REQUIRED
- LOSS OF HISTORICAL CHARACTER
- DROPPED CEILING REMAINS
- ALL EXISTING WALLS REMAIN
- EXISTING FIREPLACE REMAINS
- NO EXPANDED PUBLIC MEETING ROOM
- LESS SEATING

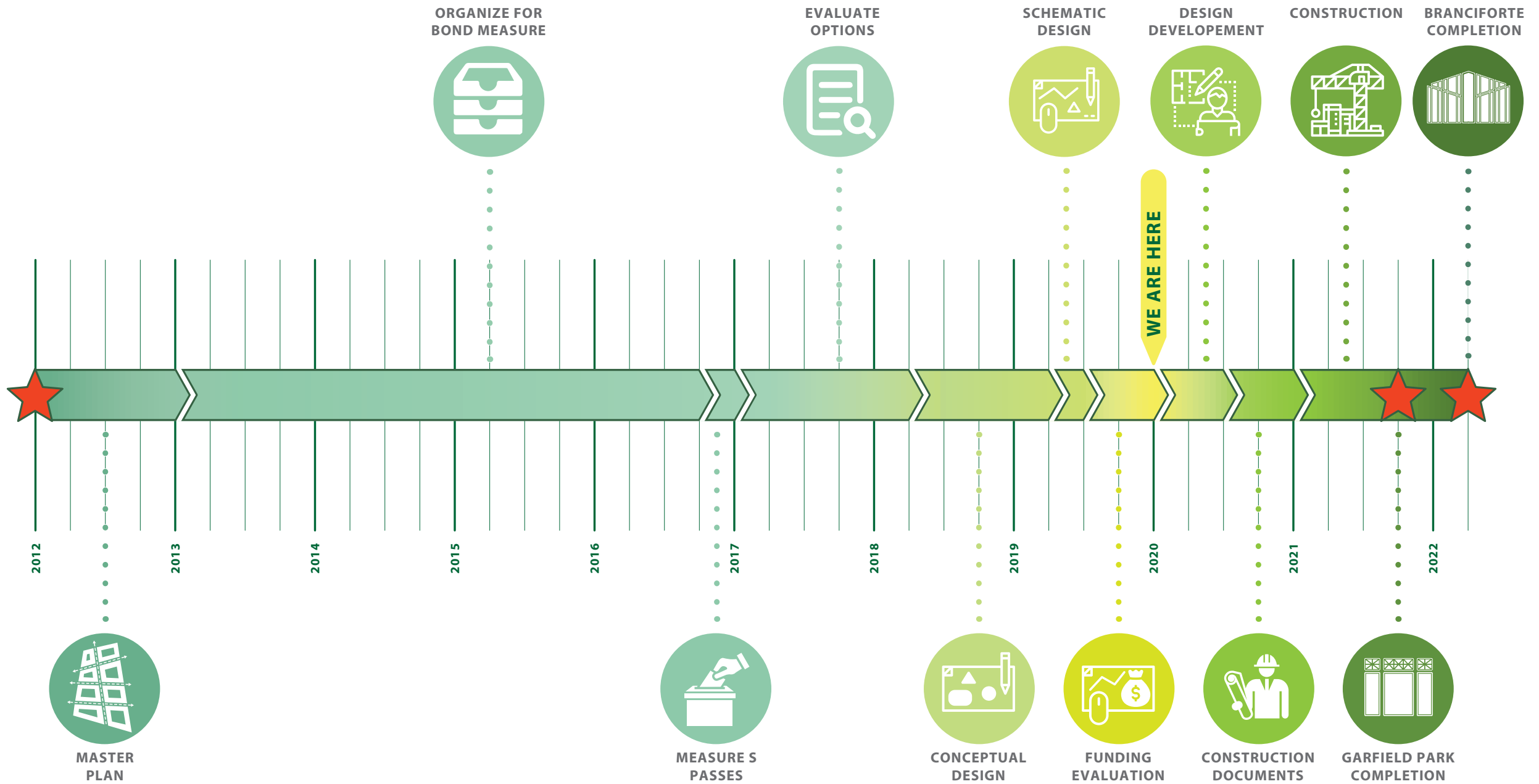
BUDGETARY BREAKDOWN

SCENARIO A:

	PROPOSED BUDGET	PROJECT COST	COST DELTA (+/-)
BRANCIFORTE:	\$2,744,500	\$4,075,000	\$1,330,500
GARFIELD PARK:	\$1,505,500	\$2,186,000	\$680,500
TOTAL	\$4,250,000	\$6,261,000	\$2,011,000

SCENARIO B:

	PROPOSED BUDGET	PROJECT COST	COST DELTA (+/-)
BRANCIFORTE:	\$2,744,500	\$3,743,000	\$998,500
GARFIELD PARK:	\$1,505,500	\$1,088,000	(\$417,500)
TOTAL	\$4,250,000	\$4,831,000	\$581,000



An aerial photograph of a city, likely San Francisco, showing a dense urban grid, a winding river, and a coastline with a bay. The image is dark and serves as a background for the text.

JAYSON
ARCHITECTURE

Q & A