

JAYSON
ARCHITECTURE



Community Meeting for the

BRANCIFORTE LIBRARY

MAY 22ND, 2019



**The City
of Santa Cruz**



**Santa Cruz
Public Libraries**



**Bogard
Construction, Inc**

Mark Dettle

Director of Public Works

Department of Public Works

Susan Nemitz

Director

Santa Cruz Public Libraries

Kimberly Owen

**Project Manager on behalf of the
City of Santa Cruz**

LEED Accredited Professional, BD+C

Jessica Goodman

Regional Manager

Santa Cruz Public Libraries

Kevin Hildreth

Branch Manager

Santa Cruz Public Libraries

PROJECT TEAM

**COMMUNITY MEETING FOR THE
BRANCIFORTE LIBRARY**

JAYSON
ARCHITECTURE



ABRAHAM JAYSON

Principal, Jayson Architecture

Architect, LEED Accredited Professional, BD+C



KATIE STUART

Project Manager, Jayson Architecture

Architect, LEED Accredited Professional, BD+C

PRESENTERS

COMMUNITY MEETING FOR THE
BRANCIFORTE LIBRARY

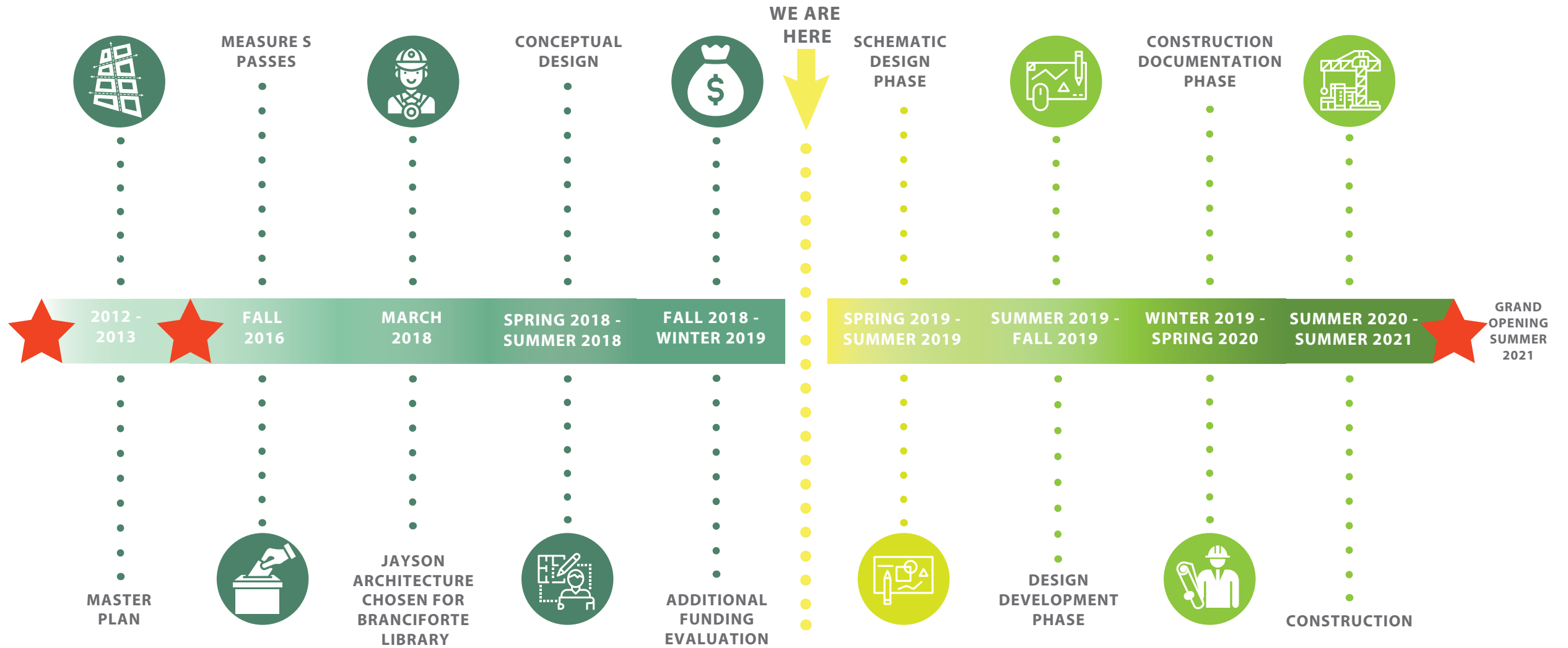
JAYSON
ARCHITECTURE



**In June 2016, voters approved Measure S:
a \$67 million bond for facilities work throughout
the Santa Cruz Public Library system**

Branciforte Library Budget: \$2,700,000

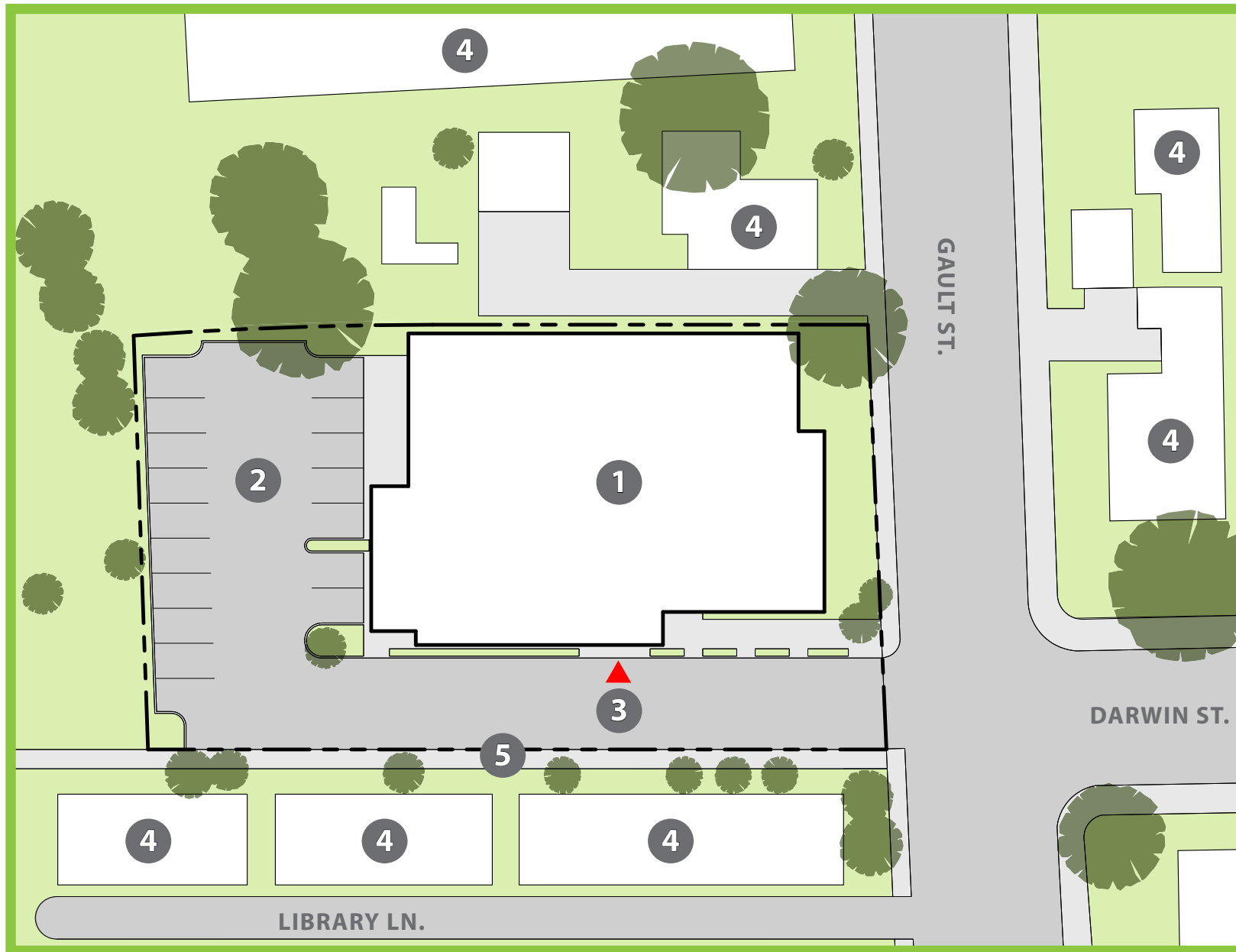
**Funds obtained through this measure will help
improve the existing space to support programs
for community members of all ages**



An aerial photograph of a residential neighborhood. The image shows a grid of streets with houses, trees, and parked cars. The houses are mostly single-story with dark roofs. There are many trees scattered throughout the neighborhood, particularly along the streets and in larger lots. The overall tone of the image is muted, with a greenish-grey tint.

JAYSON
ARCHITECTURE

NEEDS ASSESSMENT

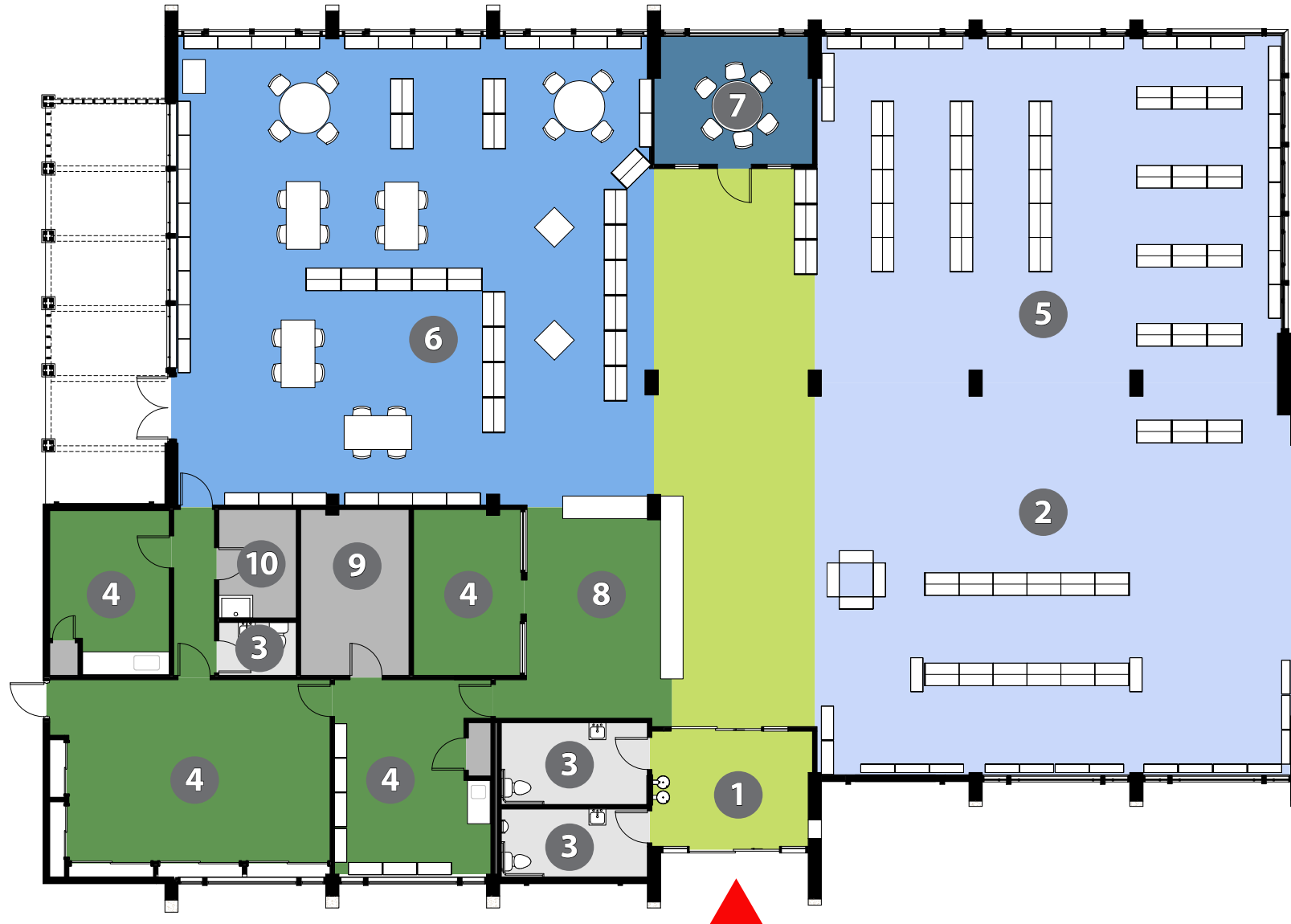


- 1 LIBRARY
- 2 PARKING
- 3 MAIN ENTRY
- 4 RESIDENTIAL
- 5 WALK/BIKE TRAIL

SITE PLAN

COMMUNITY MEETING FOR THE
BRANCIORTE LIBRARY

JAYSON
ARCHITECTURE



- ① MAIN ENTRY
- ② READING ROOM
- ③ RESTROOM
- ④ STAFF
- ⑤ ADULT
- ⑥ CHILDREN
- ⑦ TEEN
- ⑧ INFO DESK
- ⑨ MECHANICAL
- ⑩ JANITORIAL

EXISTING FLOOR PLAN

COMMUNITY MEETING FOR THE
BRANCIORTE LIBRARY

JAYSON
ARCHITECTURE

An aerial photograph of a city street grid. The image shows a dense arrangement of residential buildings, mostly single-story houses with dark roofs. The streets are lined with trees and parked cars. The overall color palette is muted, with a greenish-grey tint. The text 'JAYSON ARCHITECTURE' is in the top right, and 'HISTORY' is in the bottom left.

JAYSON
ARCHITECTURE

HISTORY



- **Opened Oct. 8, 1967**
- **Designed by Spencer, Lee & Busse**
- **Campaign for building a new branch endorsed by the Santa Cruz Sentinel**



Santa Cruz Sentinel, Santa Cruz, Calif., Sunday, October 8, 1949

celebrating the opening of the new Branciforte Library in Santa Cruz East.

**Branciforte
• DAYS •**

**OPEN
HOUSE
TODAY**

BRANCIFORTE LIBRARY — BRANCH OF SANTA CRUZ CITY AND COUNTY LIBRARY

You may
WIN
an RCA Victor
PORTABLE RADIO
See details on
page 2 of this section.

THE KEYSTONE BOOK STORE
RCA VICTOR
"POCKETTE" RADIO
• Earphone, battery and
earring carrying case
included
• "Push-Button" direct-dialing
tuning, automatic volume
control
• Built-in antenna and
external for each station

Special Buys
in Santa Cruz East
SUN. MON. TUES. WED.

Competition, convenience and greater selection of merchandise have, over the years, made Santa Cruz East a better place to shop. Now, watch for a bigger and even better Santa Cruz East to satisfy your shopping needs!



LIGHTING



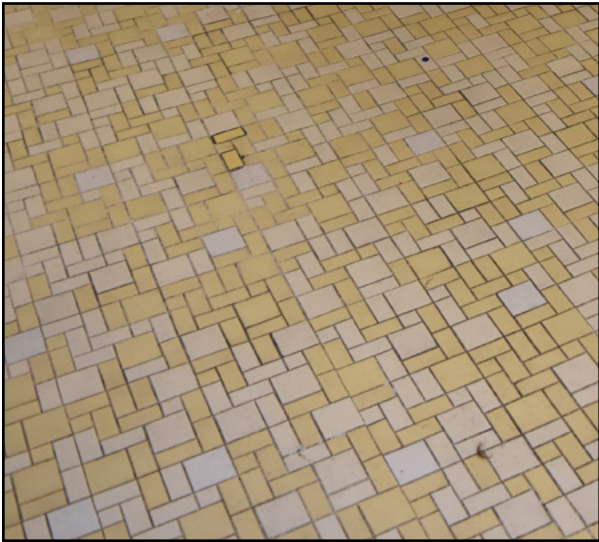
EXPOSED CONDUIT



PLUMBING FIXTURES



EXTERIOR PATIO



FLOORING



FURNITURE



CIRC DESK



ENTRY DOOR

FEATURES TO IMPROVE

**COMMUNITY MEETING FOR THE
BRANCIFORTE LIBRARY**

JAYSON
ARCHITECTURE



WOOD JOINERY



FEATURE WINDOW



CORNER WINDOW



INTERIOR PLANTING



VENT LOUVRE DETAIL



BOARD-FORM CONCRETE



CURVED BEAMS

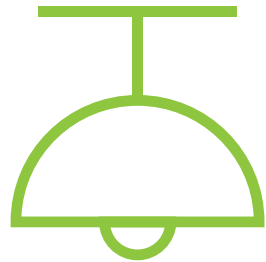


WOOD CEILING

FEATURES TO PRESERVE

COMMUNITY MEETING FOR THE
BRANCIFORTE LIBRARY

JAYSON
ARCHITECTURE



LIGHTING



PAINT



ELECTRICAL



INTERNET



ADA

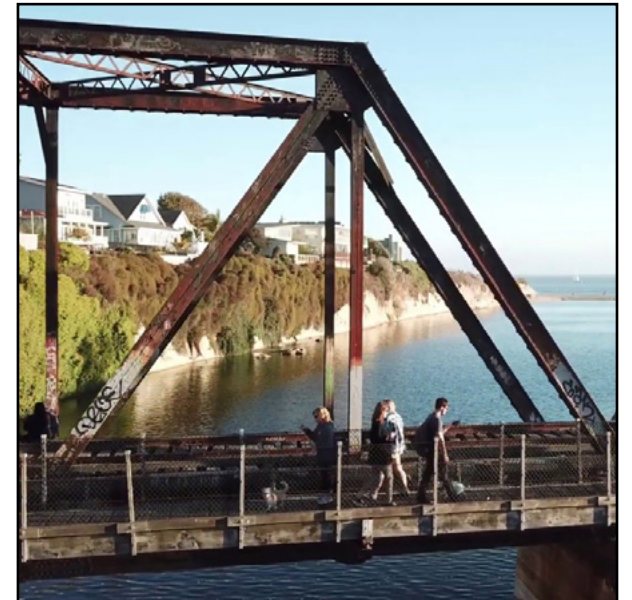
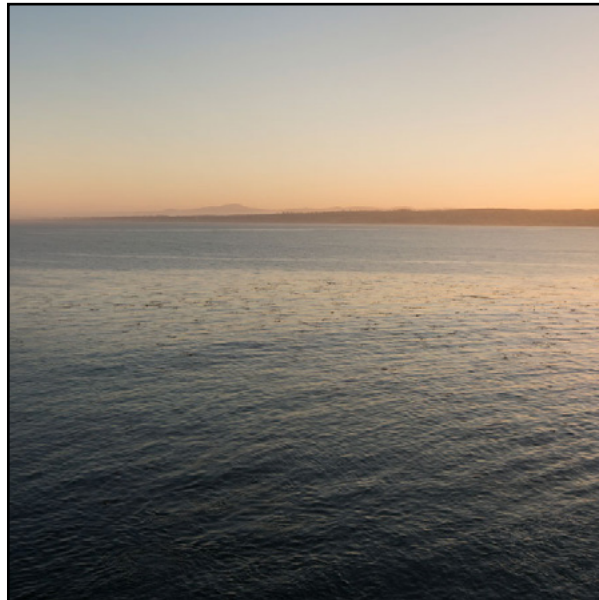
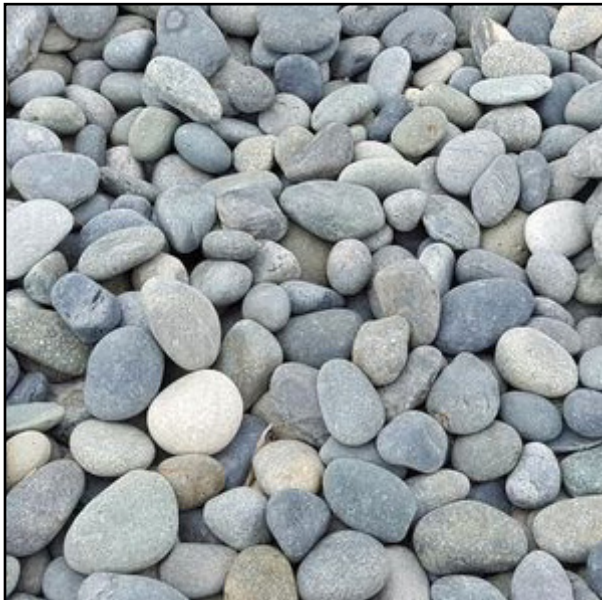
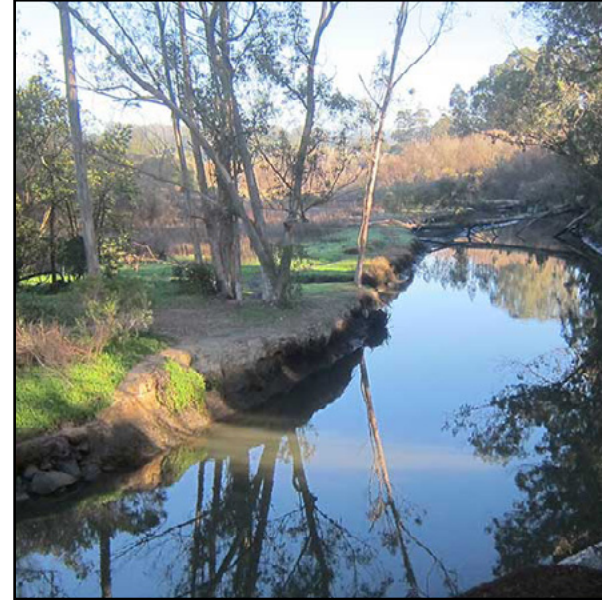


PLUMBING

An aerial photograph of a suburban neighborhood. The image shows a grid of streets with houses, trees, and parked cars. The houses are mostly single-story with dark roofs. There are many trees scattered throughout the neighborhood, particularly along the streets and in larger lots. The overall tone of the image is muted, with a greenish-grey tint.

JAYSON
ARCHITECTURE

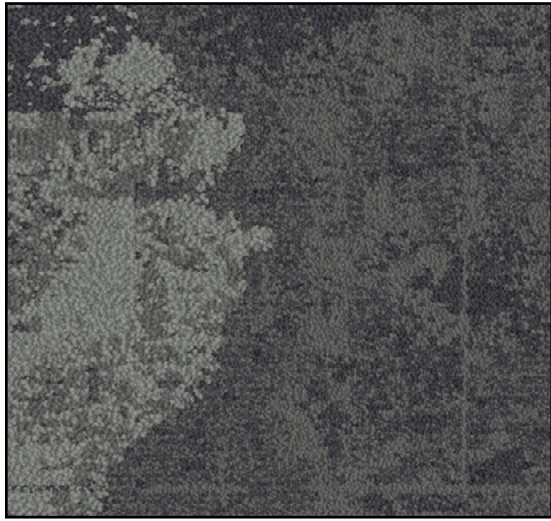
INSPIRATION & MATERIALS



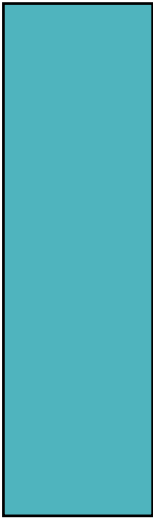
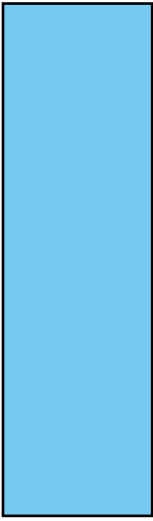
CONCEPTUAL INSPIRATION

COMMUNITY MEETING FOR THE
BRANCIFORTE LIBRARY

JAYSON
ARCHITECTURE



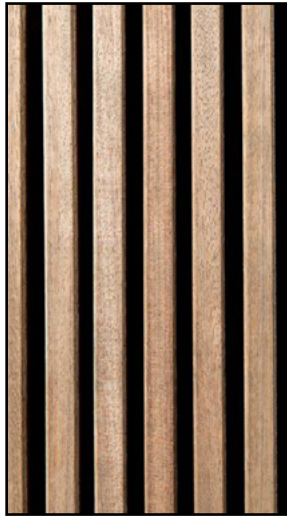
CARPET



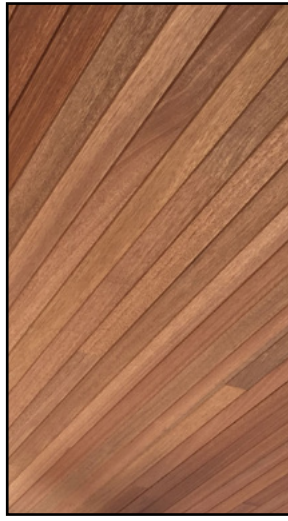
COLOR ACCENTS



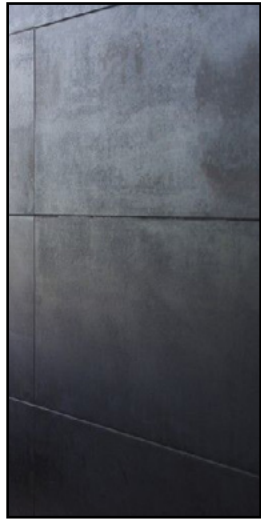
WOOD VENEER



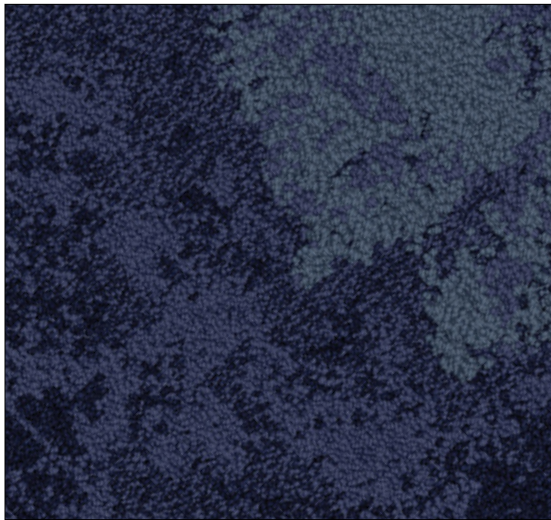
WOOD SLAT



WOOD T&G



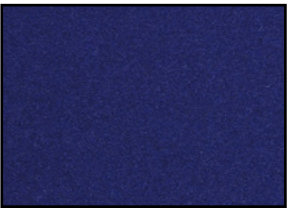
STEEL



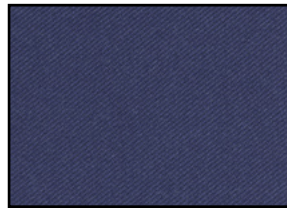
CARPET



ETCHED GLASS



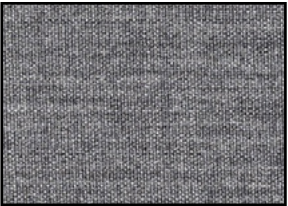
FABRIC



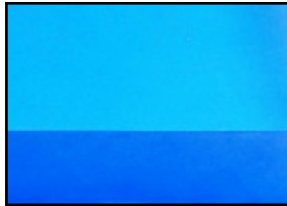
FABRIC



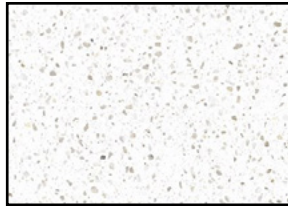
FABRIC



FABRIC



RESIN



QUARTZ



CONCRETE

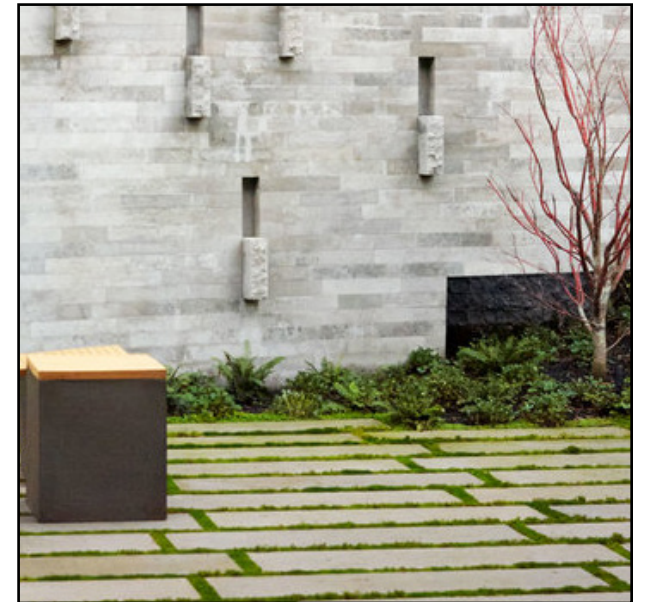
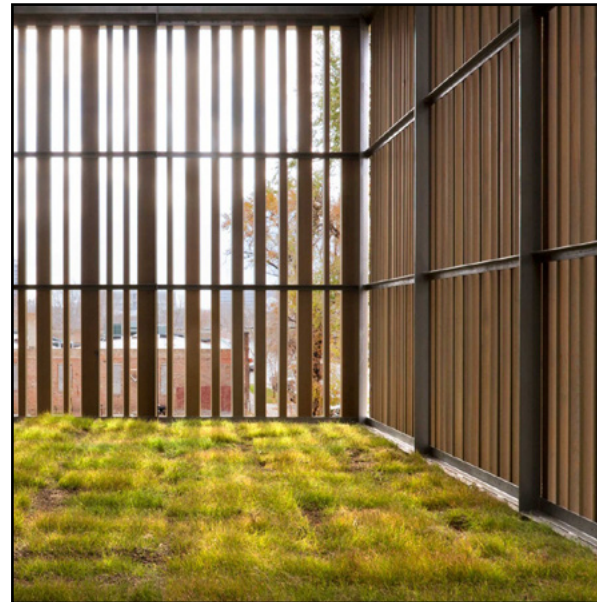
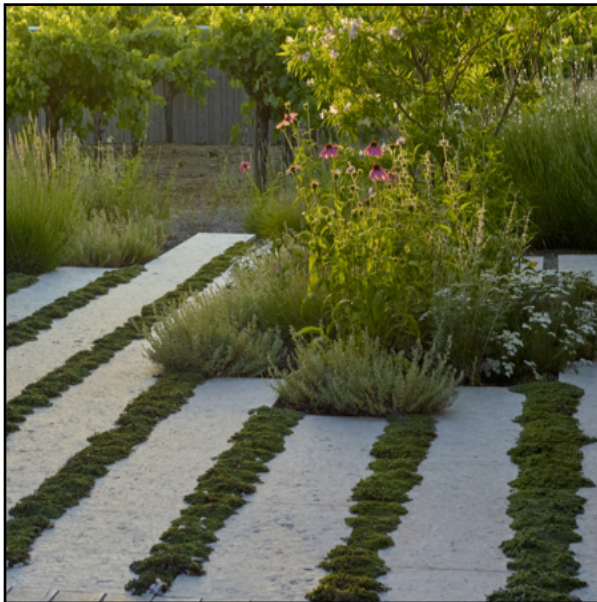
MATERIAL PALETTE



INTERIOR INSPIRATION

COMMUNITY MEETING FOR THE
BRANCIFORTE LIBRARY

JAYSON
ARCHITECTURE



EXTERIOR INSPIRATION

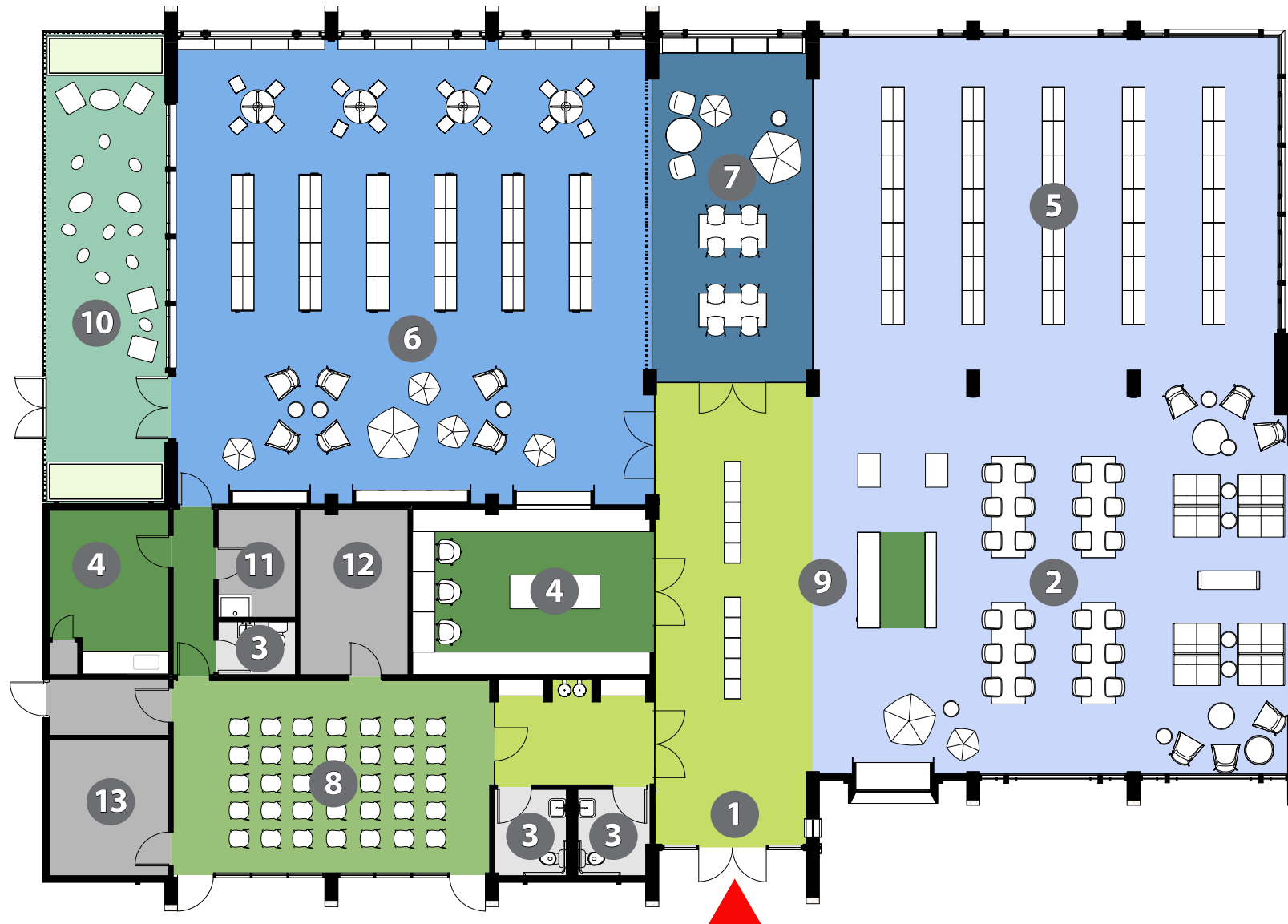
COMMUNITY MEETING FOR THE
BRANCIFORTE LIBRARY

JAYSON
ARCHITECTURE



JAYSON
ARCHITECTURE

PROPOSED DESIGN



- 1 MAIN ENTRY
- 2 READING ROOM
- 3 RESTROOM
- 4 STAFF
- 5 ADULT
- 6 CHILDREN
- 7 TEEN
- 8 COMMUNITY ROOM
- 9 INFO DESK
- 10 CHILDREN'S PATIO
- 11 JANITORIAL
- 12 MECHANICAL
- 13 STORAGE

FLOOR PLAN - PROPOSED

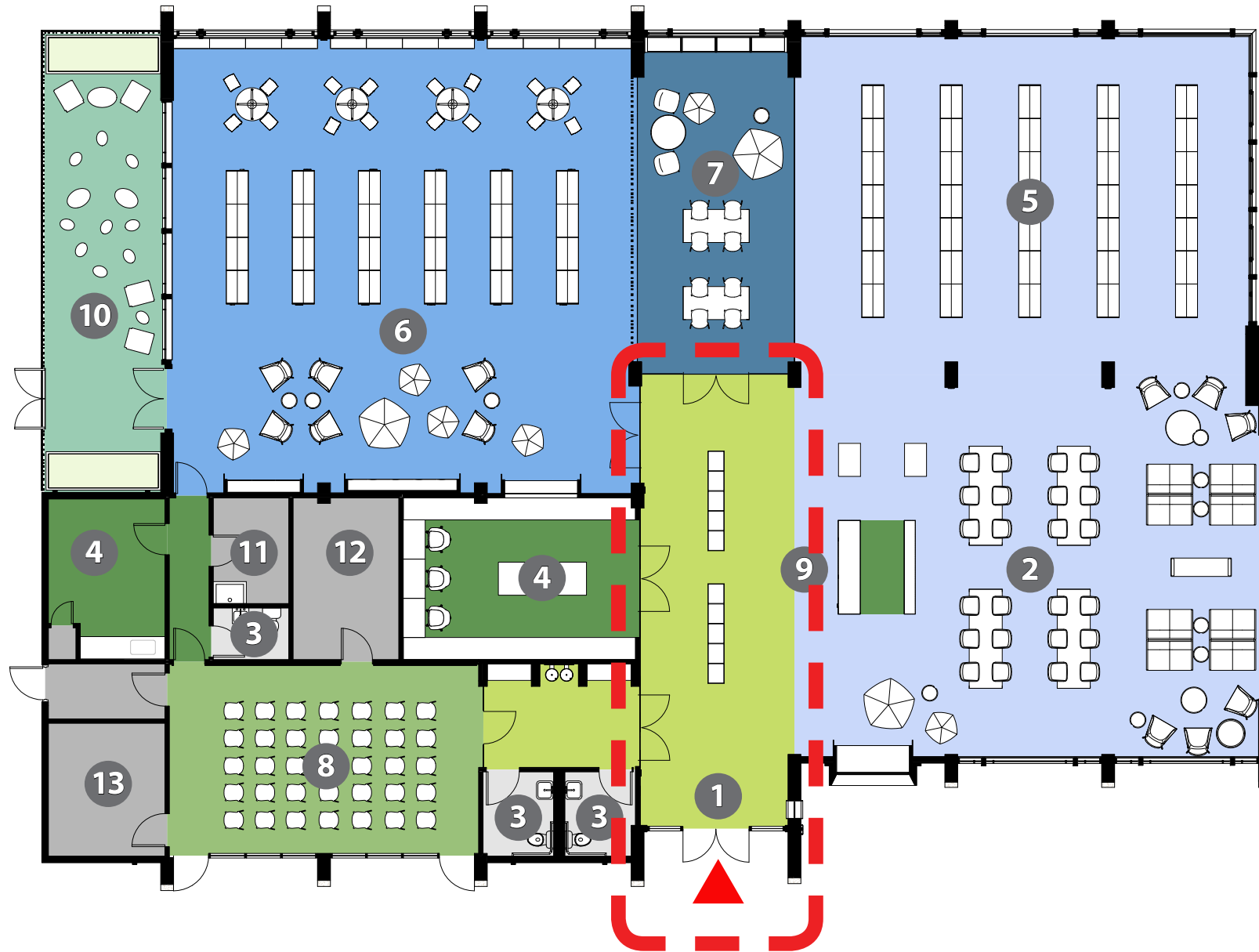
COMMUNITY MEETING FOR THE
BRANCIORTE LIBRARY

JAYSON
ARCHITECTURE

An aerial photograph of a suburban neighborhood. The image shows a grid of streets with houses, trees, and parked cars. The houses are mostly single-story with dark roofs. There are many trees scattered throughout the neighborhood, particularly along the streets and in yards. The overall tone of the image is muted, with a greenish-grey color palette.

JAYSON
ARCHITECTURE

ENTRY



- ① MAIN ENTRY
- ② READING ROOM
- ③ RESTROOM
- ④ STAFF
- ⑤ ADULT
- ⑥ CHILDREN
- ⑦ TEEN
- ⑧ COMMUNITY ROOM
- ⑨ INFO DESK
- ⑩ CHILDREN'S PATIO
- ⑪ JANITORIAL
- ⑫ MECHANICAL
- ⑬ STORAGE

FLOOR PLAN - ENTRY



RENDERING - BAY WINDOW EXTERIOR

COMMUNITY MEETING FOR THE
BRANCIFORTE LIBRARY

JAYSON
ARCHITECTURE



RENDERING - BAY WINDOW EXTERIOR

COMMUNITY MEETING FOR THE
BRANCIFORTE LIBRARY

JAYSON
ARCHITECTURE



RENDERING - ENTRY EXTERIOR

COMMUNITY MEETING FOR THE
BRANCIFORTE LIBRARY

JAYSON
ARCHITECTURE



RENDERING - ENTRY HALL

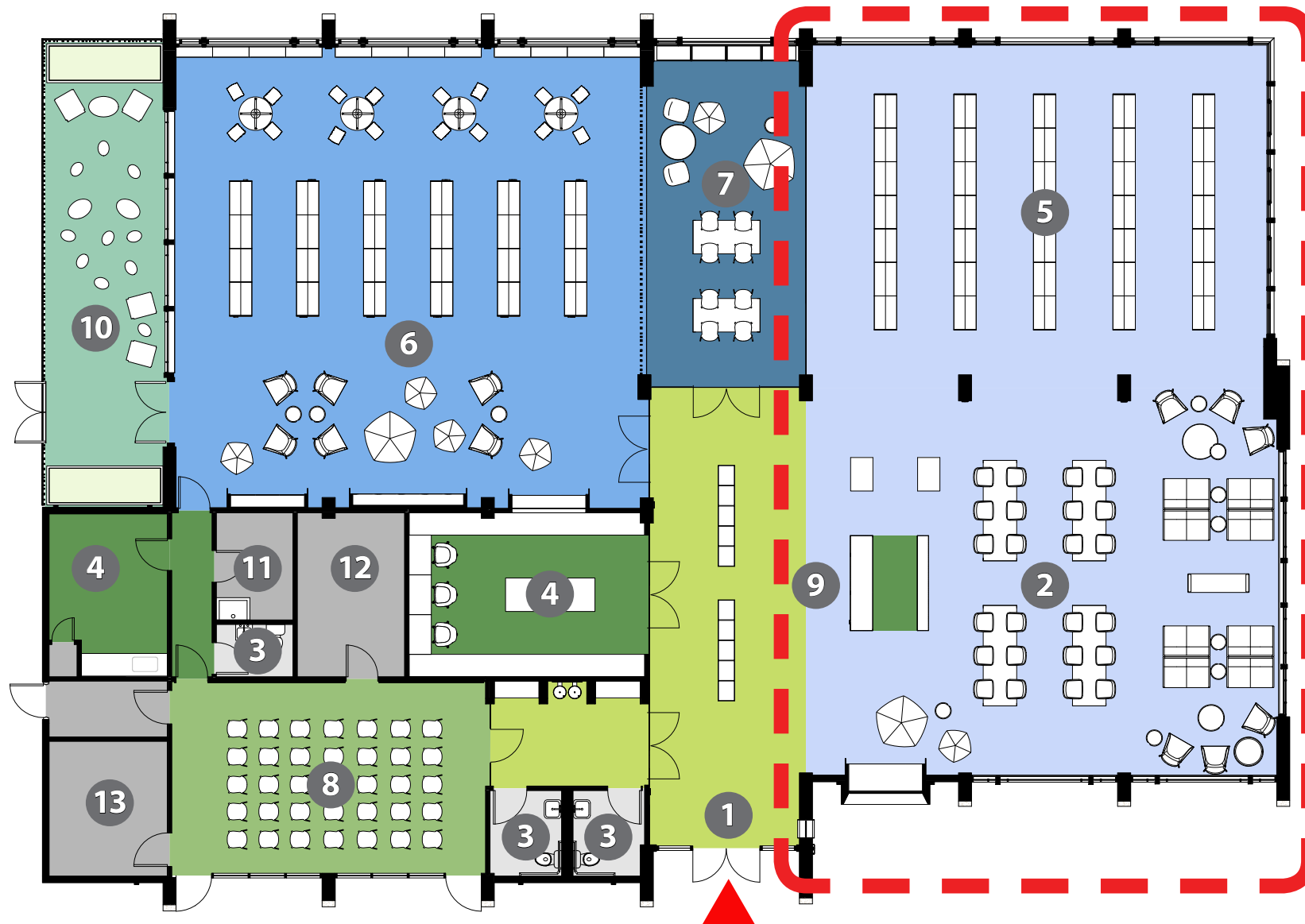
COMMUNITY MEETING FOR THE
BRANCIFORTE LIBRARY

JAYSON
ARCHITECTURE

An aerial photograph of a suburban neighborhood. The image shows a grid of streets with houses, trees, and parked cars. The houses are mostly single-story with dark roofs. There are many trees scattered throughout the neighborhood, particularly along the streets and in larger lots. The overall tone of the image is muted, with a greenish-grey color palette.

JAYSON
ARCHITECTURE

GREAT ROOM



- ① MAIN ENTRY
- ② READING ROOM
- ③ RESTROOM
- ④ STAFF
- ⑤ ADULT
- ⑥ CHILDREN
- ⑦ TEEN
- ⑧ COMMUNITY ROOM
- ⑨ INFO DESK
- ⑩ CHILDREN'S PATIO
- ⑪ JANITORIAL
- ⑫ MECHANICAL
- ⑬ STORAGE

FLOOR PLAN - GREAT ROOM



RENDERING - READING ROOM ENTRY

COMMUNITY MEETING FOR THE
BRANCIFORTE LIBRARY

JAYSON
ARCHITECTURE



RENDERING - READING ROOM LOUNGE

COMMUNITY MEETING FOR THE
BRANCIFORTE LIBRARY

JAYSON
ARCHITECTURE



RENDERING - READING ROOM LOUNGE

COMMUNITY MEETING FOR THE
BRANCIFORTE LIBRARY

JAYSON
ARCHITECTURE



RENDERING - BAY WINDOW INTERIOR

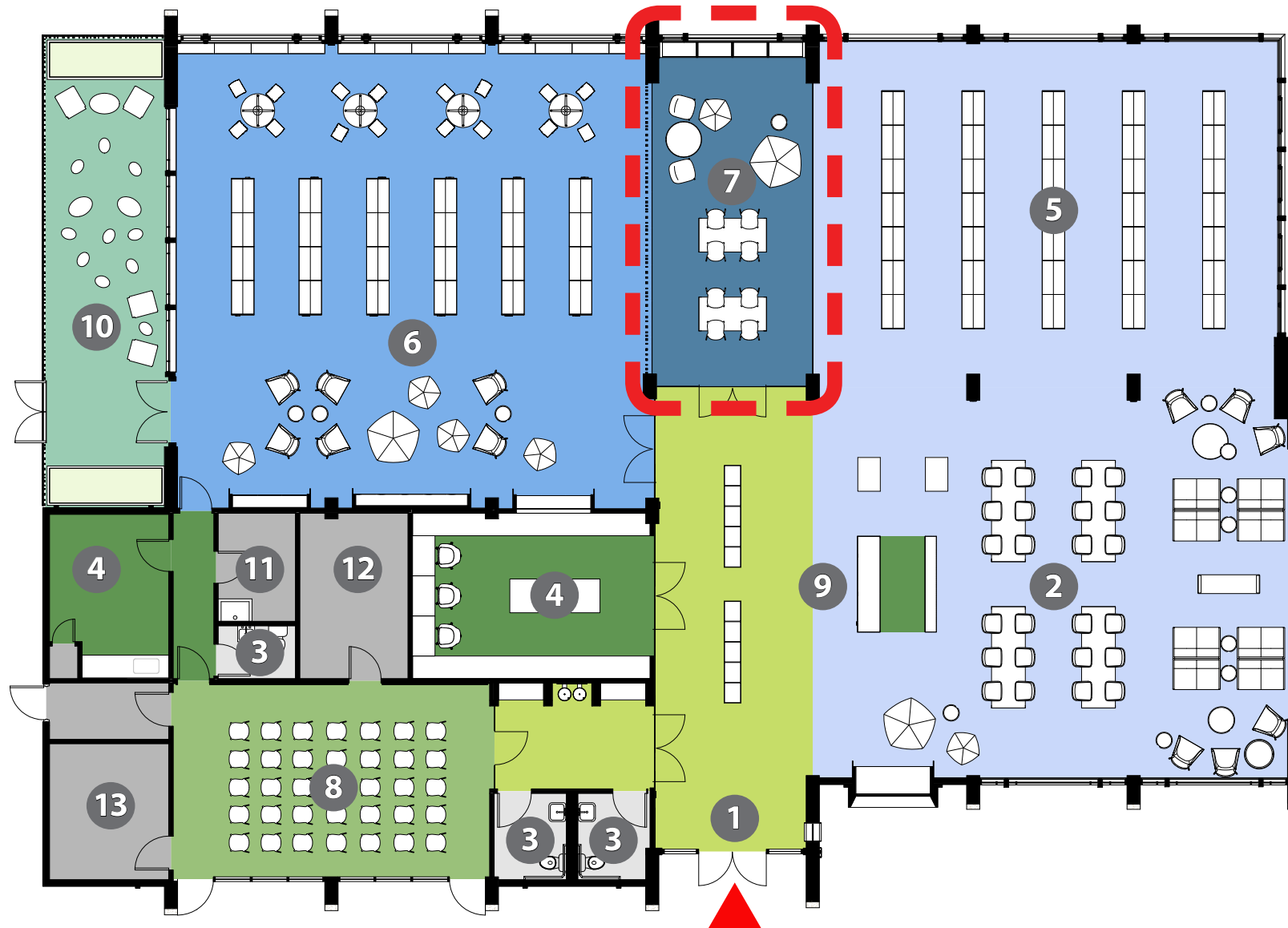
COMMUNITY MEETING FOR THE
BRANCIFORTE LIBRARY

JAYSON
ARCHITECTURE

An aerial photograph of a suburban neighborhood. The image shows a grid of streets with houses, trees, and parked cars. The houses are mostly single-story with dark roofs. There are many trees scattered throughout the neighborhood, particularly along the streets and in larger lots. The overall tone of the image is muted, with a greenish-grey color palette.

JAYSON
ARCHITECTURE

TEEN



- ① MAIN ENTRY
- ② READING ROOM
- ③ RESTROOM
- ④ STAFF
- ⑤ ADULT
- ⑥ CHILDREN
- ⑦ TEEN
- ⑧ COMMUNITY ROOM
- ⑨ INFO DESK
- ⑩ CHILDREN'S PATIO
- ⑪ JANITORIAL
- ⑫ MECHANICAL
- ⑬ STORAGE

FLOOR PLAN - TEEN ROOM

COMMUNITY MEETING FOR THE
BRANCIFORTE LIBRARY

JAYSON
ARCHITECTURE



RENDERING - TEEN ROOM

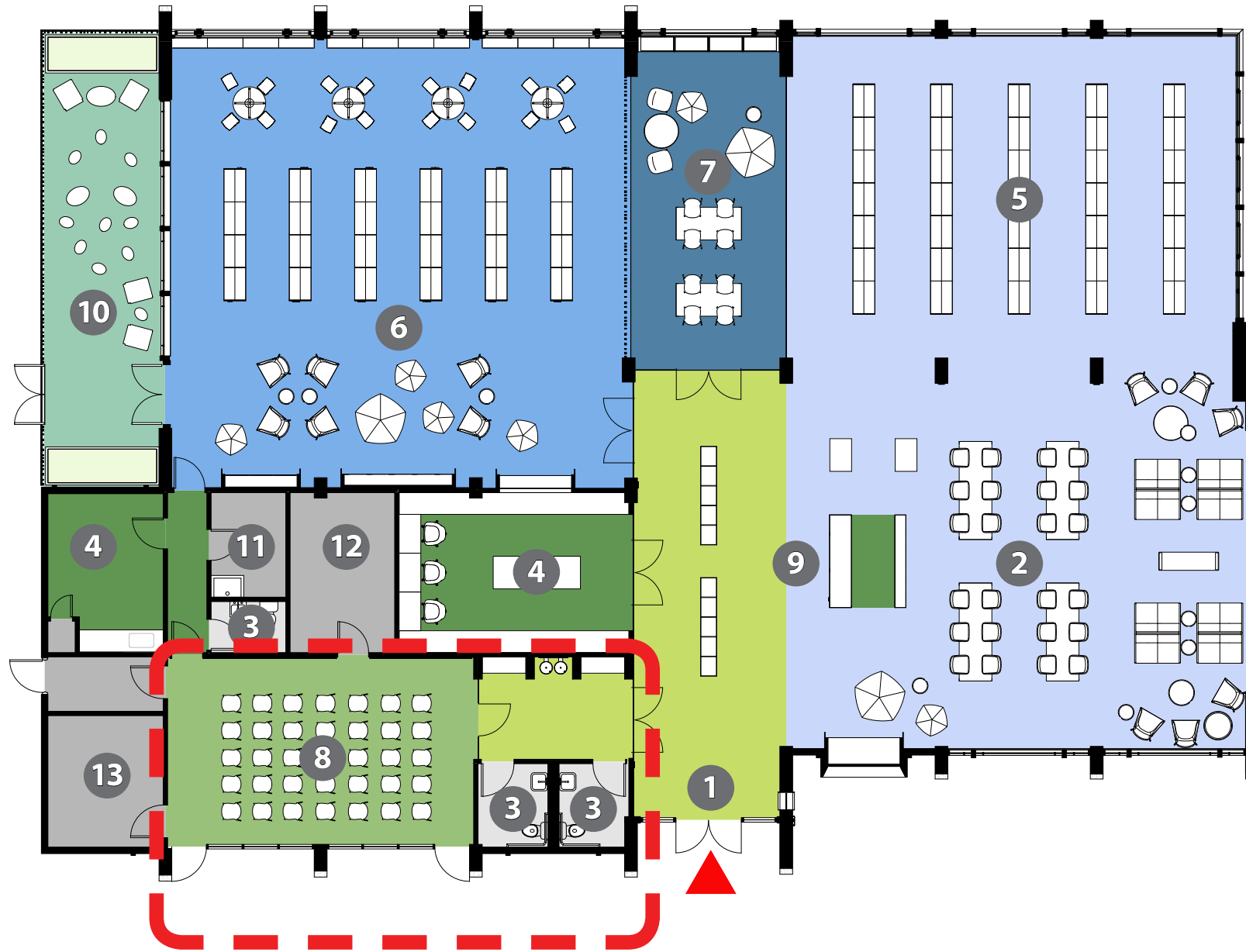
COMMUNITY MEETING FOR THE
BRANCIFORTE LIBRARY

JAYSON
ARCHITECTURE

An aerial photograph of a residential neighborhood. The image shows a grid of streets with houses, trees, and parked cars. The houses are mostly single-story with dark roofs. There are many trees scattered throughout the neighborhood, particularly along the streets and in larger lots. The overall tone of the image is muted, with a greenish-grey tint.

JAYSON
ARCHITECTURE

COMMUNITY ROOM



- ① MAIN ENTRY
- ② READING ROOM
- ③ RESTROOM
- ④ STAFF
- ⑤ ADULT
- ⑥ CHILDREN
- ⑦ TEEN
- ⑧ COMMUNITY ROOM
- ⑨ INFO DESK
- ⑩ CHILDREN'S PATIO
- ⑪ JANITORIAL
- ⑫ MECHANICAL
- ⑬ STORAGE

FLOOR PLAN - COMMUNITY ROOM



RENDERING - COMMUNITY ROOM INTERIOR

**COMMUNITY MEETING FOR THE
BRANCIFORTE LIBRARY**

JAYSON
ARCHITECTURE



RENDERING - COMMUNITY ROOM EXTERIOR

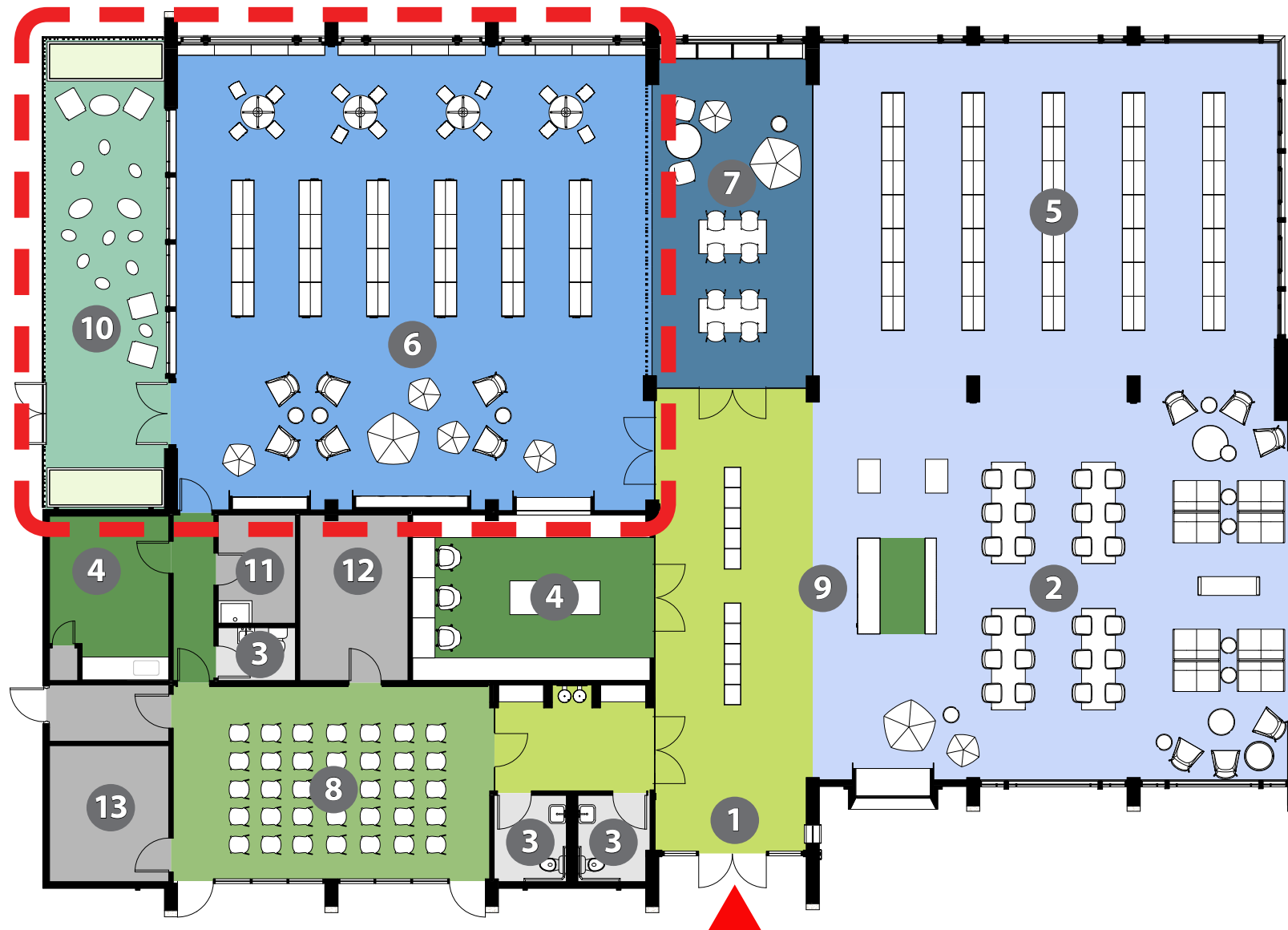
COMMUNITY MEETING FOR THE
BRANCIFORTE LIBRARY

JAYSON
ARCHITECTURE

An aerial photograph of a suburban neighborhood. The image shows a grid of streets with houses, trees, and parked cars. The houses are mostly single-story with dark roofs. There are many trees scattered throughout the neighborhood, particularly along the streets and in larger lots. The overall tone of the image is muted, with a greenish-grey tint.

JAYSON
ARCHITECTURE

CHILDREN



- 1 MAIN ENTRY
- 2 READING ROOM
- 3 RESTROOM
- 4 STAFF
- 5 ADULT
- 6 CHILDREN
- 7 TEEN
- 8 COMMUNITY ROOM
- 9 INFO DESK
- 10 CHILDREN'S PATIO
- 11 JANITORIAL
- 12 MECHANICAL
- 13 STORAGE

FLOOR PLAN - CHILDREN'S ROOM

COMMUNITY MEETING FOR THE
BRANCIFORTE LIBRARY

JAYSON
ARCHITECTURE



RENDERING - CHILDREN'S READING ROOM

COMMUNITY MEETING FOR THE
BRANCIFORTE LIBRARY

JAYSON
ARCHITECTURE



RENDERING - CHILDREN'S ROOM SEATING

COMMUNITY MEETING FOR THE
BRANCIFORTE LIBRARY

JAYSON
ARCHITECTURE



RENDERING - CHILDREN'S ROOM SEATING

COMMUNITY MEETING FOR THE
BRANCIFORTE LIBRARY

JAYSON
ARCHITECTURE



RENDERING - CHILDREN'S ROOM WORK DESKS

COMMUNITY MEETING FOR THE
BRANCIFORTE LIBRARY

JAYSON
ARCHITECTURE



RENDERING - CHILDREN'S PATIO

COMMUNITY MEETING FOR THE
BRANCIFORTE LIBRARY

JAYSON
ARCHITECTURE

- 1. What words would you use to describe the current library?**
- 2. What are your favorite things about the current library?**
- 3. What are the most critical deficiencies of the current library?**
- 4. What events would you like to see in the Community Room?**
- 5. What is one improvement that would increase your library use?**
- 6. What do you like or dislike about the design presented tonight?**

Q&A