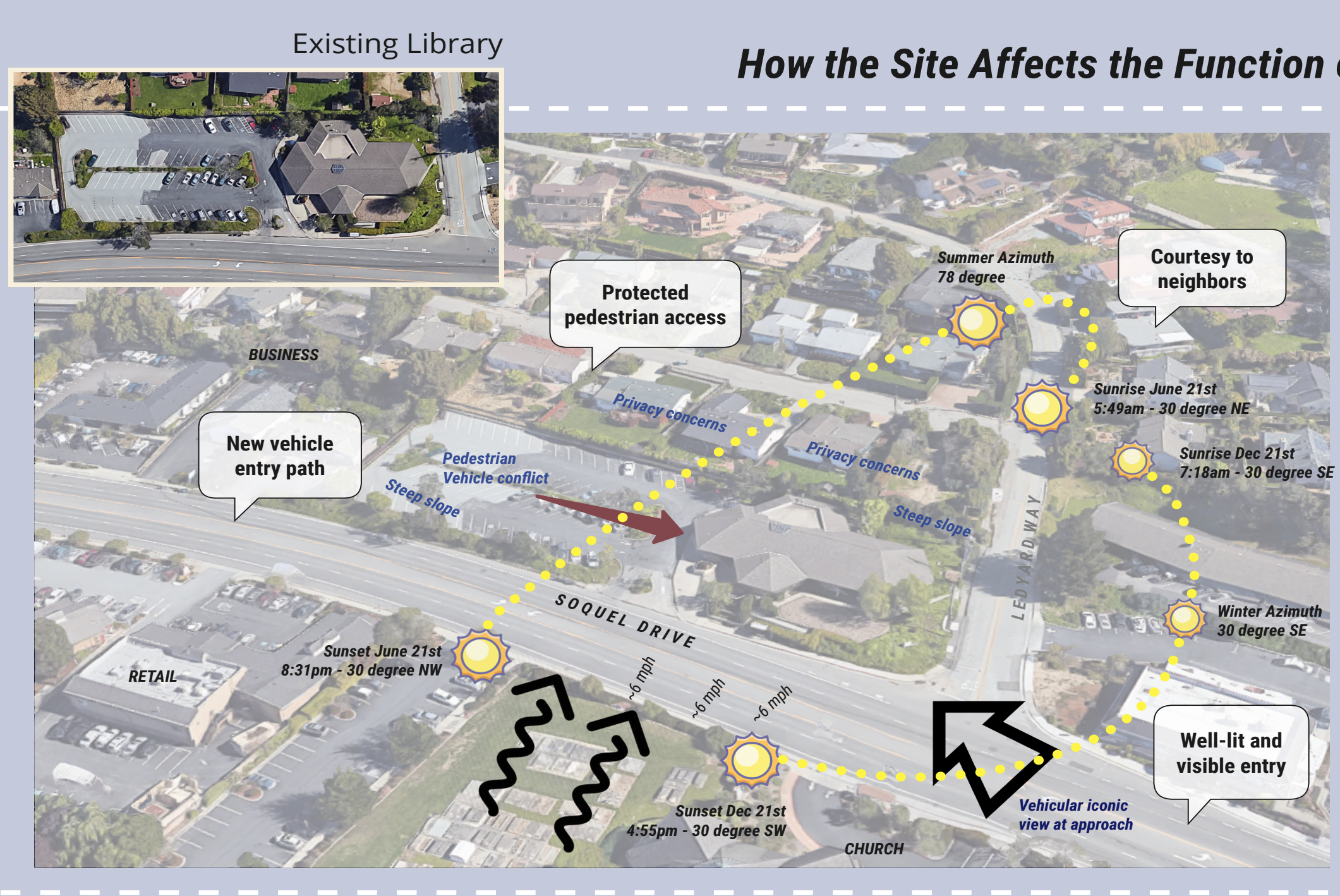


APTOS BRANCH LIBRARY

Site and Architecture

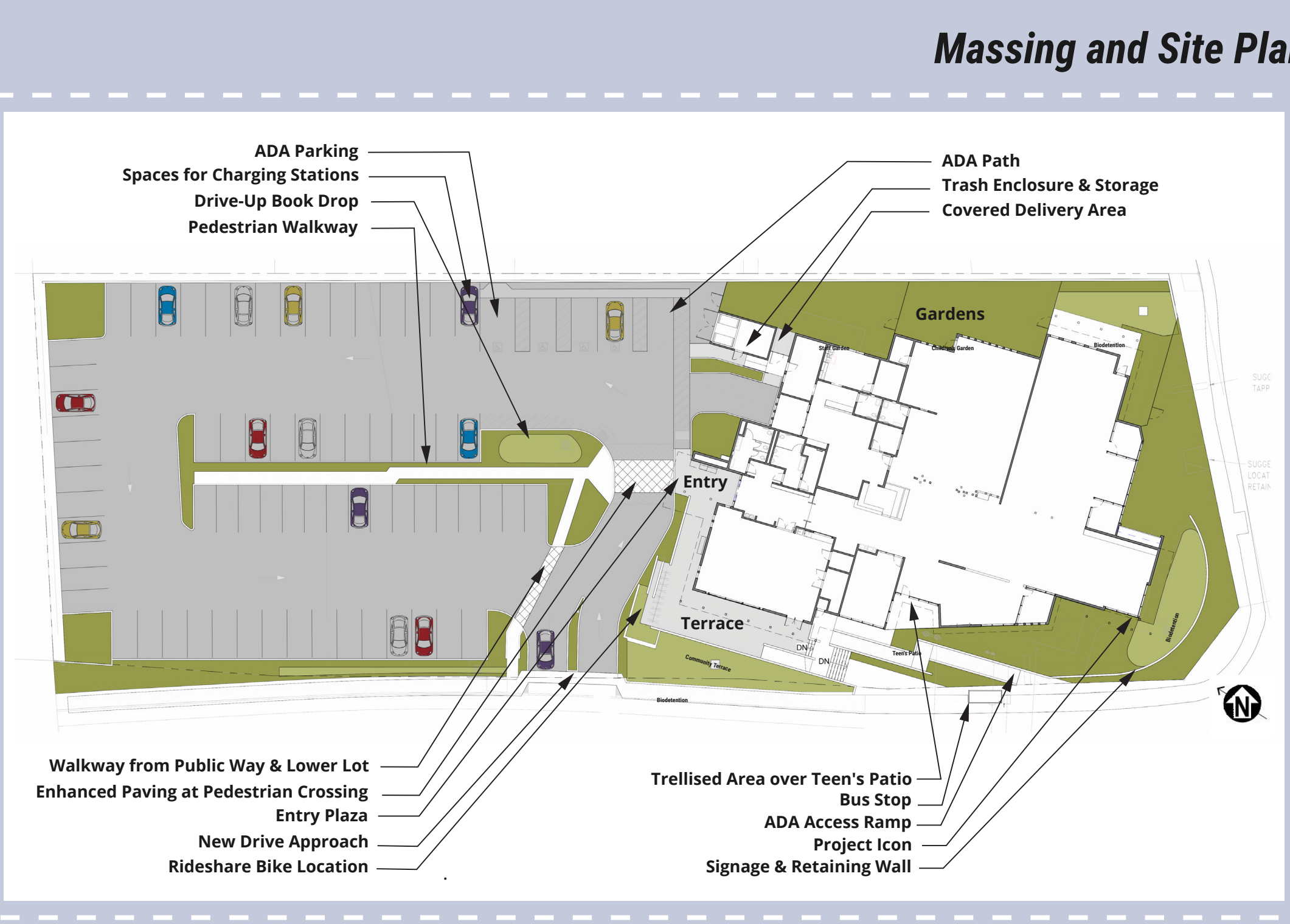


How the Site Affects the Function of the Building

Questions? Comments?

- "Central Hub for the Community"
- "Universal Access"
- "Outdoor Connectivity"

For questions or input please contact Damon Adlao, Project Manager, County of Santa Cruz, DPW at damon.adlao@santacruzcounty.us

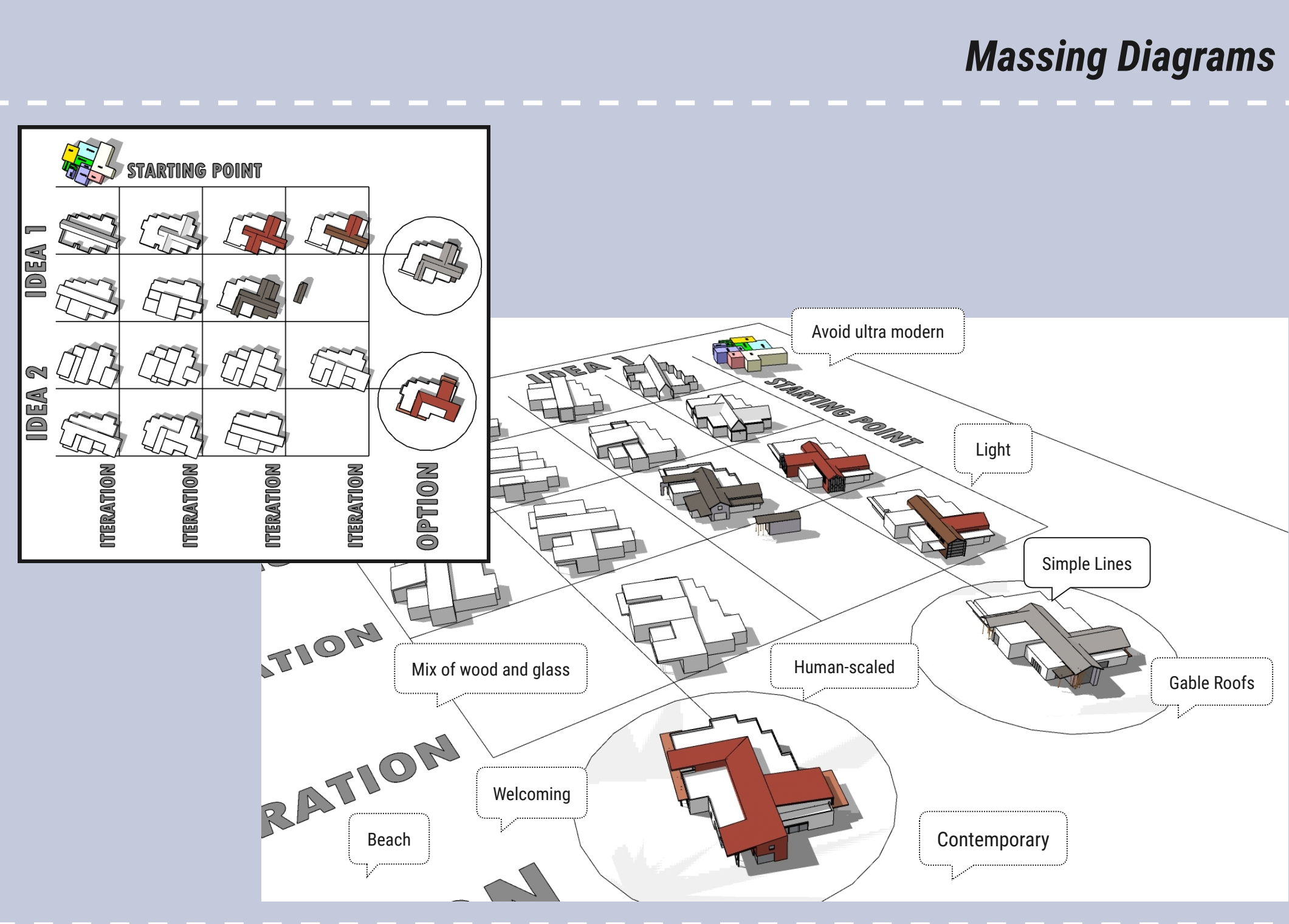


Massing and Site Plan

Questions? Comments?

- "Central Hub for the Community"
- "Universal Access"
- "Outdoor Connectivity"

For questions or input please contact Damon Adlao, Project Manager, County of Santa Cruz, DPW at damon.adlao@santacruzcounty.us



Massing Diagrams

Questions? Comments?

- "Central Hub for the Community"
- "Universal Access"
- "Outdoor Connectivity"

For questions or input please contact Damon Adlao, Project Manager, County of Santa Cruz, DPW at damon.adlao@santacruzcounty.us



Renderings

Questions? Comments?

- "Central Hub for the Community"
- "Universal Access"
- "Outdoor Connectivity"

For questions or input please contact Damon Adlao, Project Manager, County of Santa Cruz, DPW at damon.adlao@santacruzcounty.us